

# ZAT440-FT LED

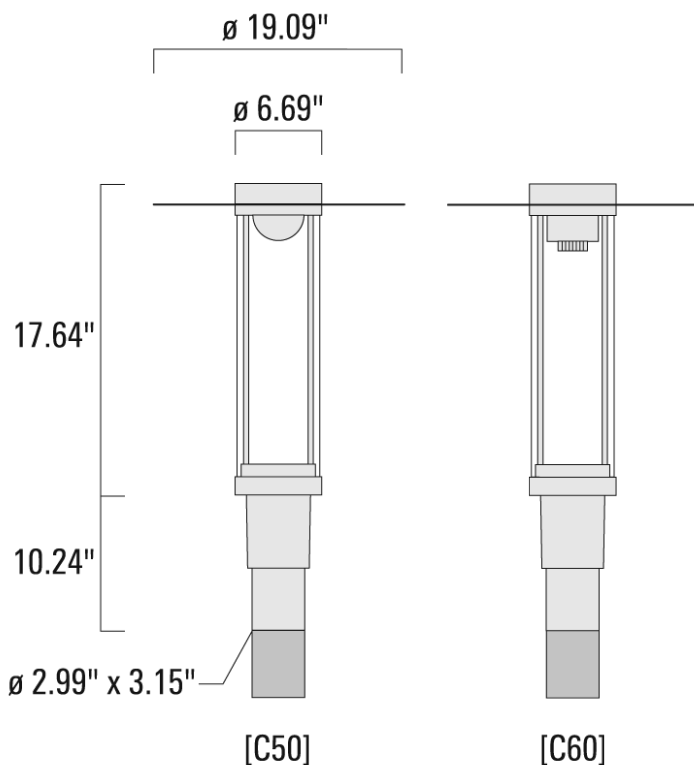
## Street and Area Lighting

**we-ef**



### Description

IP66, Class I, IK09. Marine-grade, die-cast aluminium alloy. 5CE superior corrosion protection including PCS hardware. Silicone CCG® Controlled Compression Gasket. PMMA main lens. Integral EC electronic converter in thermally separated compartment. CAD-optimised indirect optics for superior illumination and glare control. Factory installed LED circuit board. The luminaire is factory-sealed and does not need to be opened during installation.



### WE-EF LIGHTING USA, LLC

410-D Keystone Drive, 15086 Warrendale, PA 15086 - Phone: +1 724 742 0030  
customersupport.usa@we-ef.com - <https://we-ef.com/us>

Subject to technical changes and errors. - Generated on 11/23/2024





# ZAT440-FT LED

## Street and Area Lighting

### Specifications

#### Material description

---

Body	Marine-grade, die-cast aluminium alloy
Lens	PMMA
Colors	 RAL9004 Black  RAL9007 Grey Metallic  RAL9016 White  RAL8019 Dark Bronze
Gasket	Silicone CCG® Controlled Compression Gasket
Fasteners	PCS Polymer Coated Stainless Steel Hardware
Ingress protection	IP66
Impact resistance	IK09
Corrosion resistance	5CE
Windage	0.160 m <sup>2</sup>

---

#### Electrical description

---

Power supply	Integral [ECG] LED driver in 120-277V
Driver / Ballast	Integral EC electronic converter
Power factor	> 0.9

---

#### Additional information

---

Lifetime	Ta=25°/40° L70B50 > 50000h
Listings	Contact WE-EF USA for ETL/UL certification status.

---

#### WE-EF LIGHTING USA, LLC

410-D Keystone Drive, 15086 Warrendale, PA 15086 - Phone: +1 724 742 0030  
customersupport.usa@we-ef.com - <https://we-ef.com/us>  
Subject to technical changes and errors. - Generated on 11/23/2024

# ZAT440-FT LED

## Street and Area Lighting



### Options

#### Light distribution



[C50] Type V Short



symmetric distribution [C60]

#### Color temperature



2700 K



3000 K



4000 K

#### Nominal Watt

24 W

#### WE-EF LIGHTING USA, LLC

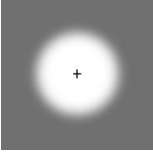

410-D Keystone Drive, 15086 Warrendale, PA 15086 - Phone: +1 724 742 0030  
customersupport.usa@we-ef.com - <https://we-ef.com/us>

Subject to technical changes and errors. - Generated on 11/23/2024

# ZAT440-FT LED

## Street and Area Lighting

### Configurations

Light distribution	Part ID	Light source	Rated lumens	Rated input power	CRI	Weight (lb)
[C50] Type V Short 	115-1688	LED-FT-12W (2700K)	1491.3	14 W	80	17.19
	115-1689	LED-FT 12W (3000K)	1592.2	14 W	80	17.19
	115-1690	LED-FT 12W (4000K)	1677.7	14 W	80	17.19
	115-1694	LED-FT-24W (2700K)	3145.6	27 W	80	17.19
	115-1695	LED-FT-24W (3000K)	3277.7	27 W	80	17.19
	115-1696	LED-FT-24W (4000K)	3417.5	27 W	80	17.19
symmetric distribution [C60] 	115-1700	LED-FT-12W (2700K)	1359.9	14 W	80	17.19
	115-1701	LED-FT 12W (3000K)	1452	14 W	80	17.19
	115-1702	LED-FT 12W (4000K)	1529.9	14 W	80	17.19
	115-1706	LED-FT-24W (2700K)	2868.5	27 W	80	17.19
	115-1707	LED-FT-24W (3000K)	2988.9	27 W	80	17.19
	115-1708	LED-FT-24W (4000K)	3116.4	27 W	80	17.19

#### WE-EF LIGHTING USA, LLC

410-D Keystone Drive, 15086 Warrendale, PA 15086 - Phone: +1 724 742 0030

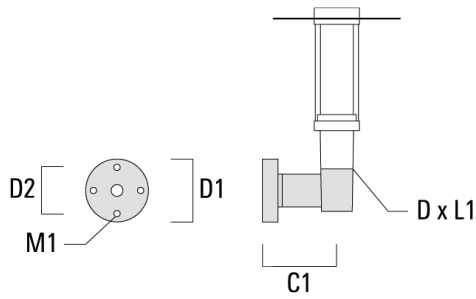
customersupport.usa@we-ef.com - <https://we-ef.com/us>

Subject to technical changes and errors. - Generated on 11/23/2024

**Mounting Accessories**

**Wall and pole brackets RZ**

Description	Part ID	C1	D1	D2	D x L1	M1	Weight(lb)
RZ0-400 Wall bracket, single	115-1324	10.90"	9.1"	7.67"	3" x 3"	0.47"	7.72 lbs



RZ2-400 Pole bracket, double	115-1323	10.16"			3" x 3"		10.80 lbs
------------------------------	----------	--------	--	--	---------	--	-----------

