

### Description

Profile Projector [ZP] for zoom spot. Spherical and aspherical, double flat convex lens system. Tunable White Technology.




IP66, Class I. IK05. Marine-grade, die-cast aluminium alloy. 5CE superior corrosion protection including PCS hardware. Silicone CCG® Controlled Compression Gasket. Safety glass lens. One cable gland. Second gland for through wiring on request. Integral EC electronic converter in thermally-separated compartment. Glass LED lens array. Factory installed LED circuit board. DALI interface.

## Projectors

### Specifications

#### Material description

---

|                      |   |
|----------------------|---|
| Body                 | Marine-grade, die-cast aluminium alloy  |
| Lens                 | Safety glass lens   |
| Colours              |  RAL9004 Signal black<br> RAL9006 White aluminium<br> RAL9007 Grey aluminium |
| Gasket               | Silicone CCG® Controlled Compression Gasket   |
| Fasteners            | PCS Polymer Coated Stainless Steel Hardware   |
| Ingress protection   | IP66  |
| Impact resistance    | IK05  |
| Corrosion resistance | 5CE   |

---

#### Electrical description

---

|                  |                         |
|------------------|-------------------------|
| Driver / Ballast | DALI (separate gearbox) |
| Power factor     | > 0.9                   |

---

#### Additional information

---

|          |                        |
|----------|------------------------|
| Lifetime | Ta=40° L70B50 > 50000h |
|----------|------------------------|

---

# FLC210-TW LED [ZP]

## Projectors

**we-ef**

### Options

#### Light distribution



symmetric Zoom-Projector [ZP] - min aperture angle



symmetric Zoom-Projector [ZP] - max aperture angle

#### Colour temperature

2200-6000K

#### Nominal Watt

0 W



#### WE-EF LIGHTING Pty Ltd

6/13 Downard Street, 3195 Braeside, Victoria - Phone: +61 3 8587 0444 - Fax: +61 3 8587 0499

info.australia@we-ef.com - <https://we-ef.com/aus>

Subject to technical changes and errors. - Generated on 23/11/2024

### Configurations

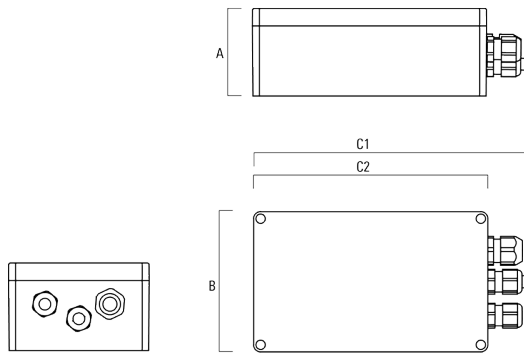
| Light distribution   | Part ID      | Light source                     | Rated lumens | Rated input power | CRI | Weight (kg) |
|--|--------------|----------------------------------|--------------|-------------------|-----|-------------|
| symmetric Zoom-Projector [ZP] - max aperture angle<br> | 139-2492_max | LED-FT-10W / 250mA - 2200-6000 K | 514.9        | 12 W              | 80  | 4           |
| symmetric Zoom-Projector [ZP] - min aperture angle<br> | 139-2492_min | LED-FT-10W / 250mA - 2200-6000 K | 343.1        | 12 W              | 80  | 4           |

## Projectors

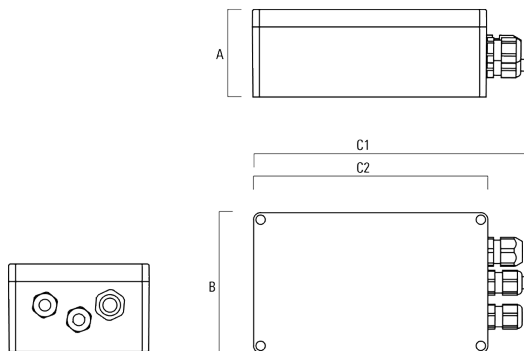
### Electrical Accessories

#### Gear box

| Description                      | Part ID  | A  | B   | C1  | C2  | Weight (kg) |
|----------------------------------|----------|----|-----|-----|-----|-------------|
| GB200 R200x120 gear box (medium) | 139-2526 | 75 | 120 | 229 | 200 | 1.05        |



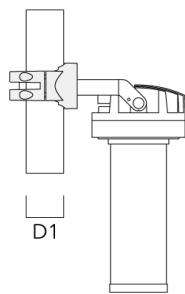
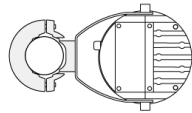
|                                 |          |    |     |     |     |      |
|---------------------------------|----------|----|-----|-----|-----|------|
| GB200 R230x140 gear box (large) | 139-2527 | 95 | 140 | 259 | 230 | 1.20 |
|---------------------------------|----------|----|-----|-----|-----|------|



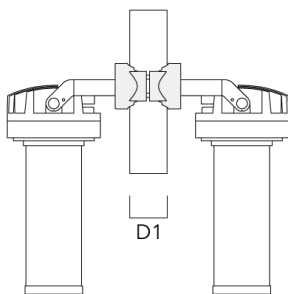
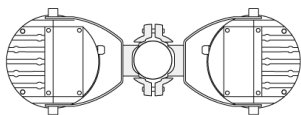
### Mounting Accessories

#### Pole clamp PC - Rotatable

| Description                               | Part ID  | D1    | Weight (kg) |
|---|----------|-------|-------------|
| PC1 76-89/60 Pole clamp, single (Ø 76-89) | 139-2702 | 76-89 | 1.00        |

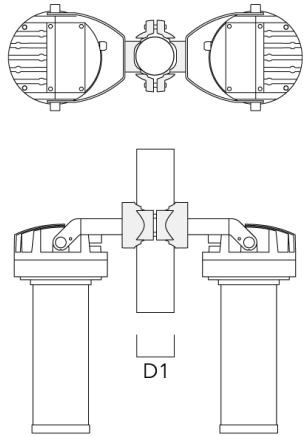


|   |          |       |      |
|---|----------|-------|------|
| PC2 76-89/60 Pole clamp, double (Ø 76-89) | 139-2703 | 76-89 | 1.00 |
|---|----------|-------|------|

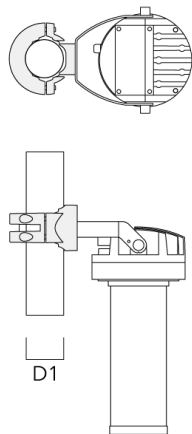


## Projectors

| Description                                    | Part ID  | D1     | Weight (kg) |
|--|----------|--------|-------------|
| PC2 82-109/60 Pole clamp, double<br>(Ø 82-109) | 139-2705 | 82-109 | 1.10        |

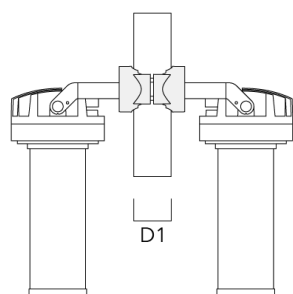
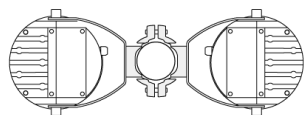


|  |          |         |      |
|--|----------|---------|------|
| PC1 102-114/60 Pole clamp, single<br>(Ø 102-114) | 139-2706 | 102-114 | 1.20 |
|--|----------|---------|------|

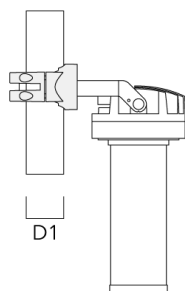
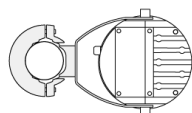


## Projectors

| Description                                      | Part ID  | D1      | Weight (kg) |
|--|----------|---------|-------------|
| PC2 102-114/60 Pole clamp, double<br>(Ø 102-114) | 139-2707 | 102-114 | 1.20        |



|  |          |         |      |
|--|----------|---------|------|
| PC1 114-133/60 Pole clamp, single<br>(Ø 114-133) | 139-2708 | 114-133 | 1.40 |
|--|----------|---------|------|





## Projectors

| Description                                      | Part ID  | D1      | Weight (kg) |
|--|----------|---------|-------------|
| PC2 114-133/60 Pole clamp, double<br>(Ø 114-133) | 139-2709 | 114-133 | 1.40        |

