

Description





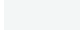
IP66, Class I or Class II. IK08. Marine-grade, die-cast aluminium alloy. 5CE superior corrosion protection including PCS hardware. Silicone CCG® Controlled Compression Gasket. RFC® Reflection Free Contour main lens. Integral EC electronic converter in thermally separated compartment. DALI. CAD-optimised optics for superior illumination and glare control. OLC® One LED Concept. Factory installed LED circuit board. The luminaire is factory-sealed and does not need to be opened during installation.

Variant with 2200 K or as 'Wild-Light' 2200 K combined with 3000 K with Eco Step Dim® Advanced or Motion available on request, must be specified at time of ordering. For further details and available variants see below under additional information - Wild-Light Presentation.

Contact WE-EF direct or your local WE-EF sales representative for an individual solution designed to precisely meet your needs.

Spigot Ø 60 x 80 mm optional available. Must be indicated during order placement.

Specifications**Material description**

Body	Marine-grade, die-cast aluminium alloy
Lens	RFC® Reflection Free Contour technology
Colours	 RAL9004 Signal black  RAL9006 White aluminium  RAL9007 Grey aluminium  RAL7016 Anthracite grey  RAL9016 Traffic white
Gasket	Silicone CCG® Controlled Compression Gasket
Fasteners	PCS Polymer Coated Stainless Steel Hardware
Ingress protection	IP66
Impact resistance	IK08
Corrosion resistance	5CE
Windage	0.146 m ²

Electrical description

Power supply	220-240V / 50-60 Hz
Driver / Ballast	Integral EC electronic converter. DALI
Power factor	> 0.9
Surge protection	6/6 kV (optional SP10)

Additional information

Lifetime	Ta=25° L90B10 > 90000h
Energy efficiency class	C-D (Light source)

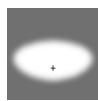
VFL540 LED

Pole mounted

we-ef

Options

Light distribution



asymmetric, side throw beam [S60]



asymmetric, side throw [S70]



asymmetric, forward throw [A60]



asymmetric, side throw beam [S65]



rectangular, side throw [R65]



pedestrian crossing, left-hand traffic [P45L]



pedestrian crossing, right-hand traffic [P45R]



pedestrian/bicycle lane [P65]

Colour temperature



3000 K



4000 K



2700 K

Nominal Watt

29 W

42 W

49 W

58 W

86 W

1 W

15 W

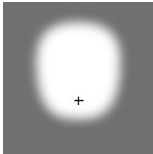
0 W

WE-EF LEUCHTEN GmbH

Töpinger Straße 16, 29646 Bispingen, Germany - Phone: +49 5194 909-0
info@we-ef.com - <https://we-ef.com>

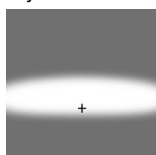
Subject to technical changes and errors. - Generated on 23/11/2024

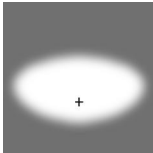
Configurations

Light distribution	Part ID	Light source	Rated lumens	Rated input power	CRI	Weight (kg)
asymmetric, forward throw [A60] 	108-0926	LED-24/24W / 350 mA - 4000 K	3566.2	26.5 W	80	7.80
	108-0926-70	LED-24/24W / 350 mA - 4000 K	3985.8	26.5 W	70	7.80
	108-0929	LED-36/36W / 350 mA - 4000 K	5349.3	39 W	80	8.20
	108-0929-70	LED-36/36W / 350 mA - 4000 K	5978.6	39 W	70	8.20
	108-0932	LED-42/42W / 350 mA - 4000 K	6240.9	46 W	80	8.20
	108-0932-70	LED-42/42W / 350 mA - 4000 K	6975.1	46 W	70	8.20
	108-0938	LED-24/48W / 700 mA - 4000 K	6145.6	54 W	80	8.20
	108-0938-70	LED-24/48W / 700 mA - 4000 K	6938.6	54 W	70	7.80
	108-0941	LED-36/72W / 700 mA - 4000 K	9218.5	79 W	80	8.20
	108-0941-70	LED-36/72W / 700 mA - 4000 K	10407.9	79 W	70	8.20
	108-0944	LED-42/84W / 700 mA - 4000 K	10754.9	96 W	80	8.20
	108-0944-70	LED-42/84W / 700 mA - 4000 K	12142.6	96 W	70	8.20
	108-1057	LED-24/24W / 350 mA - 3000 K	3251.5	26.5 W	80	8.20
	108-1057-70	LED-24/24W / 350 mA - 3000 K	3776	26.5 W	70	7.80
	108-1059	LED-24/48W / 700 mA - 3000 K	5749.1	54 W	80	8.20
	108-1059-70	LED-24/48W / 700 mA - 3000 K	6542.1	54 W	70	7.80
	108-1061	LED-36/36W / 350 mA - 3000 K	4877.3	39 W	80	8.20
	108-1061-70	LED-36/36W / 350 mA - 3000 K	5664	39 W	70	8.20
	108-1063	LED-36/72W / 700 mA - 3000 K	8623.7	79 W	80	8.20
	108-1063-70	LED-36/72W / 700 mA - 3000 K	9813.2	79 W	70	8.20
	108-1065	LED-42/42W / 350 mA - 3000 K	5690.2	46 W	80	8.20
	108-1065-70	LED-42/42W / 350 mA - 3000 K	6608	46 W	70	8.20
	108-1067	LED-42/84W / 700 mA - 3000 K	10061	96 W	80	8.20
	108-1067-70	LED-42/84W / 700 mA - 3000 K	11448.7	96 W	70	8.20
	108-1859	LED-36/108W / 1050 mA - 4000 K	13352.6	119 W	80	8.20
	108-1859-70	LED-36/108W / 1050 mA - 4000 K	15133	119 W	70	8.20
	108-1865	LED-36/108W / 1050 mA - 3000 K	12759.2	119 W	80	8.20
	108-1865-70	LED-36/108W / 1050 mA - 3000 K	14539.6	119 W	70	8.20
	108-2088	LED-42/126W / 1050 mA - 3000 K	14885.7	136 W	80	8.20
	108-2088-70	LED-42/126W / 1050 mA - 3000 K	16962.8	136 W	70	8.20
	108-2089	LED-42/126W / 1050 mA - 4000 K	15578.1	136 W	80	8.20
	108-2089-70	LED-42/126W / 1050 mA - 4000 K	17655.2	136 W	70	8.20
108-2382	LED-24/24W / 350 mA - 2700 K	3041.8	26.5 W	80	8.20	
108-2382-70	LED-24/24W / 350 mA - 2700 K	3251.5	26.5 W	70	7.80	
108-2383	LED-24/48W / 700 mA - 2700 K	5352.6	54 W	80	8.20	

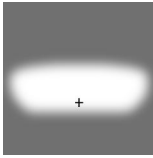
Light distribution	Part ID	Light source	Rated lumens	Rated input power	CRI	Weight (kg)
	108-2383-70	LED-24/48W / 700 mA - 2700 K	5749.1	54 W	70	7.80
	108-2384	LED-36/36W / 350 mA - 2700 K	4562.6	39 W	80	8.20
	108-2384-70	LED-36/36W / 350 mA - 2700 K	4877.3	39 W	70	8.20
	108-2385	LED-36/72W / 700 mA - 2700 K	8029	79 W	80	8.20
	108-2385-70	LED-36/72W / 700 mA - 2700 K	8623.7	79 W	70	8.20
	108-2386	LED-36/108W / 1050 mA - 2700 K	12165.7	119 W	80	8.20
	108-2386-70	LED-36/108W / 1050 mA - 2700 K	13946.1	119 W	70	8.20
	108-2387	LED-42/42W / 350 mA - 2700 K	5323.1	46 W	80	8.20
	108-2387-70	LED-42/42W / 350 mA - 2700 K	5690.2	46 W	70	8.20
	108-2388	LED-42/84W / 700 mA - 2700 K	9367.1	96 W	80	8.20
	108-2388-70	LED-42/84W / 700 mA - 2700 K	10061	96 W	70	8.20
	108-2389	LED-42/126W / 1050 mA - 2700 K	14193.4	136 W	80	8.20
	108-2389-70	LED-42/126W / 1050 mA - 2700 K	16270.5	136 W	70	8.20
asymmetric, side throw [S70]	108-0854	LED-24/24W / 350 mA - 3000 K	3423	26.5 W	80	7.80
	108-0854-70	LED-24/24W / 350 mA - 3000 K	3975.1	26.5 W	70	7.80
	108-0858	LED-36/36W / 350 mA - 3000 K	5134.5	39 W	80	8.20
	108-0858-70	LED-36/36W / 350 mA - 3000 K	5962.6	39 W	70	8.20
	108-0862	LED-42/42W / 350 mA - 3000 K	5990.2	46 W	80	8.20
	108-0862-70	LED-42/42W / 350 mA - 3000 K	6956.4	46 W	70	8.20
	108-0881	LED-24/24W / 350 mA - 4000 K	3754.3	26.5 W	80	8.20
	108-0881-70	LED-24/24W / 350 mA - 4000 K	4195.9	26.5 W	70	7.80
	108-0883	LED-36/36W / 350 mA - 4000 K	5631.4	39 W	80	8.20
	108-0883-70	LED-36/36W / 350 mA - 4000 K	6293.9	39 W	70	8.20
	108-0885	LED-42/42W / 350 mA - 4000 K	6569.9	46 W	80	8.20
	108-0885-70	LED-42/42W / 350 mA - 4000 K	7342.9	46 W	70	8.20
	108-0904	LED-24/48W / 700 mA - 4000 K	6585.8	54 W	80	7.80
	108-0904-70	LED-24/48W / 700 mA - 4000 K	7435.5	54 W	70	7.80
	108-0905	LED-24/48W / 700 mA - 3000 K	6160.9	54 W	80	7.80
	108-0905-70	LED-24/48W / 700 mA - 3000 K	7010.6	54 W	70	7.80
	108-0910	LED-36/72W / 700 mA - 4000 K	9878.6	79 W	80	8.20
	108-0910-70	LED-36/72W / 700 mA - 4000 K	11153.3	79 W	70	8.20
	108-0911	LED-36/72W / 700 mA - 3000 K	9241.3	79 W	80	8.20
	108-0911-70	LED-36/72W / 700 mA - 3000 K	10516	79 W	70	8.20
	108-0916	LED-42/84W / 700 mA - 4000 K	11525.1	96 W	80	8.20
	108-0916-70	LED-42/84W / 700 mA - 4000 K	13012.2	96 W	70	8.20
	108-0917	LED-42/84W / 700 mA - 3000 K	10781.5	96 W	80	8.20

asymmetric, side throw [S70]



Light distribution	Part ID	Light source	Rated lumens	Rated input power	CRI	Weight (kg)
	108-0917-70	LED-42/84W / 700 mA - 3000 K	12268.6	96 W	70	8.20
	108-1861	LED-36/108W / 1050 mA - 3000 K	13585.4	119 W	80	8.20
	108-1861-70	LED-36/108W / 1050 mA - 3000 K	15481	119 W	70	8.20
	108-1923	LED-36/108W / 1050 mA - 4000 K	14217.3	119 W	80	8.20
	108-1923-70	LED-36/108W / 1050 mA - 4000 K	16112.9	119 W	70	8.20
	108-2096	LED-42/126W / 1050 mA - 3000 K	15849.6	136 W	80	8.20
	108-2096-70	LED-42/126W / 1050 mA - 3000 K	18061.2	136 W	70	8.20
	108-2097	LED-42/126W / 1050 mA - 4000 K	16586.8	136 W	80	8.20
	108-2097-70	LED-42/126W / 1050 mA - 4000 K	18798.4	136 W	70	8.20
	108-2367	LED-24/24W / 350 mA - 2700 K	3202.2	26.5 W	80	7.80
	108-2367-70	LED-24/24W / 350 mA - 2700 K	3423	26.5 W	70	7.80
	108-2368	LED-24/48W / 700 mA - 2700 K	5736	54 W	80	7.80
	108-2368-70	LED-24/48W / 700 mA - 2700 K	6160.9	54 W	70	7.80
	108-2369	LED-36/36W / 350 mA - 2700 K	4803.2	39 W	80	8.20
	108-2369-70	LED-36/36W / 350 mA - 2700 K	5134.5	39 W	70	8.20
	108-2370	LED-36/72W / 700 mA - 2700 K	8604	79 W	80	8.20
	108-2370-70	LED-36/72W / 700 mA - 2700 K	9241.3	79 W	70	8.20
	108-2371	LED-36/108W / 1050 mA - 2700 K	12953.5	119 W	80	8.20
	108-2371-70	LED-36/108W / 1050 mA - 2700 K	14849.2	119 W	70	8.20
	108-2372	LED-42/42W / 350 mA - 2700 K	5603.8	46 W	80	8.20
	108-2372-70	LED-42/42W / 350 mA - 2700 K	5990.2	46 W	70	8.20
	108-2373	LED-42/84W / 700 mA - 2700 K	10038	96 W	80	8.20
	108-2373-70	LED-42/84W / 700 mA - 2700 K	10781.5	96 W	70	8.20
	108-2374	LED-42/126W / 1050 mA - 2700 K	15112.4	136 W	80	8.20
	108-2374-70	LED-42/126W / 1050 mA - 2700 K	17324	136 W	70	8.20
asymmetric, side throw beam [S60]	108-0842	LED-24/24W / 350 mA - 3000 K	3491.8	26.5 W	80	7.80
	108-0842-70	LED-24/24W / 350 mA - 3000 K	4055	26.5 W	70	7.80
	108-0846	LED-36/36W / 350 mA - 3000 K	5237.7	39 W	80	8.20
	108-0846-70	LED-36/36W / 350 mA - 3000 K	6082.5	39 W	70	8.20
	108-0850	LED-42/42W / 350 mA - 3000 K	6110.7	46 W	80	8.20
	108-0850-70	LED-42/42W / 350 mA - 3000 K	7096.3	46 W	70	8.20
	108-0875	LED-24/24W / 350 mA - 4000 K	3829.7	26.5 W	80	7.80
	108-0875-70	LED-24/24W / 350 mA - 4000 K	4280.3	26.5 W	70	7.80
	108-0877	LED-36/36W / 350 mA - 4000 K	5744.6	39 W	80	8.20
	108-0877-70	LED-36/36W / 350 mA - 4000 K	6420.4	39 W	70	8.20
	108-0879	LED-42/42W / 350 mA - 4000 K	6702	46 W	80	8.20

Light distribution	Part ID	Light source	Rated lumens	Rated input power	CRI	Weight (kg)
	108-0879-70	LED-42/42W / 350 mA - 4000 K	7490.5	46 W	70	8.20
	108-0901	LED-24/48W / 700 mA - 4000 K	6701	54 W	80	7.80
	108-0901-70	LED-24/48W / 700 mA - 4000 K	7565.7	54 W	70	7.80
	108-0902	LED-24/48W / 700 mA - 3000 K	6268.7	54 W	80	7.80
	108-0902-70	LED-24/48W / 700 mA - 3000 K	7133.4	54 W	70	7.80
	108-0907	LED-36/72W / 700 mA - 4000 K	10051.6	79 W	80	8.20
	108-0907-70	LED-36/72W / 700 mA - 4000 K	11348.5	79 W	70	8.20
	108-0908	LED-36/72W / 700 mA - 3000 K	9403.1	79 W	80	8.20
	108-0908-70	LED-36/72W / 700 mA - 3000 K	10700	79 W	70	8.20
	108-0913	LED-42/84W / 700 mA - 4000 K	11726.8	96 W	80	8.20
	108-0913-70	LED-42/84W / 700 mA - 4000 K	13240	96 W	70	8.20
	108-0914	LED-42/84W / 700 mA - 3000 K	10970.2	96 W	80	8.20
	108-0914-70	LED-42/84W / 700 mA - 3000 K	12483.4	96 W	70	8.20
	108-1857	LED-36/108W / 1050 mA - 4000 K	14442.3	119 W	80	8.20
	108-1857-70	LED-36/108W / 1050 mA - 4000 K	16367.9	119 W	70	8.20
	108-1863	LED-36/108W / 1050 mA - 3000 K	13800.4	119 W	80	8.20
	108-1863-70	LED-36/108W / 1050 mA - 3000 K	15726	119 W	70	8.20
	108-2092	LED-42/126W / 1050 mA - 3000 K	16100.5	136 W	80	8.20
	108-2092-70	LED-42/126W / 1050 mA - 3000 K	18347	136 W	70	8.20
	108-2093	LED-42/126W / 1050 mA - 4000 K	16849.3	136 W	80	8.20
	108-2093-70	LED-42/126W / 1050 mA - 4000 K	19095.9	136 W	70	8.20
	108-2350	LED-24/24W / 350 mA - 2700 K	3266.5	26.5 W	80	7.80
	108-2350-70	LED-24/24W / 350 mA - 2700 K	3491.8	26.5 W	70	7.80
	108-2351-70	LED-24/48W / 700 mA - 2700 K	6268.7	54 W	70	7.80
	108-2352	LED-36/36W / 350 mA - 2700 K	4899.8	39 W	80	8.20
	108-2352-70	LED-36/36W / 350 mA - 2700 K	5237.7	39 W	70	8.20
	108-2353	LED-36/72W / 700 mA - 2700 K	8754.6	79 W	80	8.20
	108-2353-70	LED-36/72W / 700 mA - 2700 K	9403.1	79 W	70	8.20
	108-2354	LED-36/108W / 1050 mA - 2700 K	13158.5	119 W	80	8.20
	108-2354-70	LED-36/108W / 1050 mA - 2700 K	15084.2	119 W	70	8.20
	108-2355	LED-42/42W / 350 mA - 2700 K	5716.4	46 W	80	8.20
	108-2355-70	LED-42/42W / 350 mA - 2700 K	6110.7	46 W	70	8.20
	108-2356	LED-42/84W / 700 mA - 2700 K	10213.7	96 W	80	8.20
	108-2356-70	LED-42/84W / 700 mA - 2700 K	10970.2	96 W	70	8.20
	108-2357	LED-42/126W / 1050 mA - 2700 K	15351.6	136 W	80	8.20
	108-2357-70	LED-42/126W / 1050 mA - 2700 K	17598.2	136 W	70	8.20

Light distribution	Part ID	Light source	Rated lumens	Rated input power	CRI	Weight (kg)
asymmetric, side throw beam [S65] 	108-0967	LED-24/24W / 350 mA - 4000 K	3836.2	26.5 W	80	7.80
	108-0967-70	LED-24/24W / 350 mA - 4000 K	4287.6	26.5 W	70	7.80
	108-0968	LED-24/48W / 700 mA - 4000 K	6763.7	54 W	80	7.80
	108-0968-70	LED-24/48W / 700 mA - 4000 K	7636.4	54 W	70	7.80
	108-0969	LED-36/36W / 350 mA - 4000 K	5754.4	39 W	80	8.20
	108-0969-70	LED-36/36W / 350 mA - 4000 K	6431.3	39 W	70	8.20
	108-0970	LED-36/72W / 700 mA - 4000 K	10145.6	79 W	80	8.20
	108-0970-70	LED-36/72W / 700 mA - 4000 K	11454.7	79 W	70	8.20
	108-0971	LED-42/42W / 350 mA - 4000 K	6713.4	46 W	80	8.20
	108-0971-70	LED-42/42W / 350 mA - 4000 K	7503.2	46 W	70	8.20
	108-0972	LED-42/84W / 700 mA - 4000 K	11836.5	96 W	80	8.20
	108-0972-70	LED-42/84W / 700 mA - 4000 K	13363.8	96 W	70	8.20
	108-1081	LED-24/24W / 350 mA - 3000 K	3497.7	26.5 W	80	7.80
	108-1081-70	LED-24/24W / 350 mA - 3000 K	4061.9	26.5 W	70	7.80
	108-1083	LED-24/48W / 700 mA - 3000 K	6327.3	54 W	80	7.80
	108-1083-70	LED-24/48W / 700 mA - 3000 K	7200.1	54 W	70	7.80
	108-1085	LED-36/36W / 350 mA - 3000 K	5246.6	39 W	80	8.20
	108-1085-70	LED-36/36W / 350 mA - 3000 K	6092.8	39 W	70	8.20
	108-1087	LED-36/72W / 700 mA - 3000 K	9491	79 W	80	8.20
	108-1087-70	LED-36/72W / 700 mA - 3000 K	10800.1	79 W	70	8.20
	108-1089	LED-42/42W / 350 mA - 3000 K	6121.1	46 W	80	8.20
	108-1089-70	LED-42/42W / 350 mA - 3000 K	7108.3	46 W	70	8.20
	108-1091	LED-42/84W / 700 mA - 3000 K	11072.8	96 W	80	8.20
	108-1091-70	LED-42/84W / 700 mA - 3000 K	12600.1	96 W	70	8.20
	108-1856	LED-36/108W / 1050 mA - 4000 K	14725	119 W	80	8.20
	108-1856-70	LED-36/108W / 1050 mA - 4000 K	16688.3	119 W	70	8.20
	108-1862	LED-36/108W / 1050 mA - 3000 K	14070.5	119 W	80	8.20
	108-1862-70	LED-36/108W / 1050 mA - 3000 K	16033.9	119 W	70	8.20
	108-2094	LED-42/126W / 1050 mA - 3000 K	16415.6	136 W	80	8.20
	108-2094-70	LED-42/126W / 1050 mA - 3000 K	18706.2	136 W	70	8.20
	108-2095	LED-42/126W / 1050 mA - 4000 K	17179.1	136 W	80	8.20
	108-2095-70	LED-42/126W / 1050 mA - 4000 K	19469.7	136 W	70	8.20
108-2358	LED-24/24W / 350 mA - 2700 K	3272.1	26.5 W	80	7.80	
108-2358-70	LED-24/24W / 350 mA - 2700 K	3497.7	26.5 W	70	7.80	
108-2359	LED-24/48W / 700 mA - 2700 K	5891	54 W	80	7.80	
108-2359-70	LED-24/48W / 700 mA - 2700 K	6327.3	54 W	70	7.80	

Light distribution	Part ID	Light source	Rated lumens	Rated input power	CRI	Weight (kg)	
	108-2360	LED-36/36W / 350 mA - 2700 K	4908.1	39 W	80	8.20	
	108-2360-70	LED-36/36W / 350 mA - 2700 K	5246.6	39 W	70	8.20	
	108-2361	LED-36/72W / 700 mA - 2700 K	8836.5	79 W	80	8.20	
	108-2361-70	LED-36/72W / 700 mA - 2700 K	9491	79 W	70	8.20	
	108-2362	LED-36/108W / 1050 mA - 2700 K	13416.1	119 W	80	8.20	
	108-2362-70	LED-36/108W / 1050 mA - 2700 K	15379.4	119 W	70	8.20	
	108-2363	LED-42/42W / 350 mA - 2700 K	5726.1	46 W	80	8.20	
	108-2363-70	LED-42/42W / 350 mA - 2700 K	6121.1	46 W	70	8.20	
	108-2364	LED-42/84W / 700 mA - 2700 K	10309.2	96 W	80	8.20	
	108-2364-70	LED-42/84W / 700 mA - 2700 K	11072.8	96 W	70	8.20	
	108-2365	LED-42/126W / 1050 mA - 2700 K	15652.1	136 W	80	8.20	
	108-2365-70	LED-42/126W / 1050 mA - 2700 K	17942.6	136 W	70	8.20	
	pedestrian crossing, left-hand traffic [P45L]	108-1983	LED-36/72W / 700 mA - 3000 K	9127.9	79 W	80	8.20
		108-1984	LED-36/72W / 700 mA - 4000 K	9757.4	79 W	80	8.20
108-1987		LED-42/84W / 700 mA - 3000 K	10649.2	96 W	80	8.20	
108-1988		LED-42/84W / 700 mA - 4000 K	11383.6	96 W	80	8.20	
108-2528		LED-36/72W / 700 mA - 2700 K	8498.4	79 W	80	8.20	
108-2529		LED-42/84W / 700 mA - 2700 K	9914.8	96 W	80	8.20	
pedestrian crossing, right-hand traffic [P45R]	108-1985	LED-36/72W / 700 mA - 3000 K	9018.9	79 W	80	8.20	
	108-1986	LED-36/72W / 700 mA - 4000 K	9640.9	79 W	80	8.20	
	108-1989	LED-42/84W / 700 mA - 3000 K	10522	96 W	80	8.20	
	108-1990	LED-42/84W / 700 mA - 4000 K	11247.7	96 W	80	8.20	
	108-2390	LED-36/72W / 700 mA - 2700 K	8396.9	79 W	80	8.20	
	108-2391	LED-42/84W / 700 mA - 2700 K	9796.4	96 W	80	8.20	
pedestrian/bicycle lane [P65]	108-1860	LED-36/108W / 1050 mA - 4000 K	14722.8	119 W	80	8.2	
	108-1860-70	LED-36/108W / 1050 mA - 4000 K	16685.9	119 W	70	8.2	
	108-1866	LED-36/108W / 1050 mA - 3000 K	14068.5	119 W	80	8.2	
	108-1866-70	LED-36/108W / 1050 mA - 3000 K	16031.5	119 W	70	8.2	
	108-2105	LED-42/126W / 1050 mA - 3000 K	16413.2	136 W	80	8.2	
	108-2105-70	LED-42/126W / 1050 mA - 3000 K	18703.4	136 W	70	8.2	
	108-2106	LED-42/126W / 1050 mA - 4000 K	17176.6	136 W	80	8.2	
	108-2106-70	LED-42/126W / 1050 mA - 4000 K	19466.9	136 W	70	8.2	
	108-2115	LED-36/36W / 350 mA - 3000 K	5124.9	39 W	80	8.2	
	108-2115-70	LED-36/36W / 350 mA - 3000 K	5951.5	39 W	70	8.2	
	108-2116	LED-36/72W / 700 mA - 3000 K	9367.2	79 W	80	8.2	
	108-2116-70	LED-36/72W / 700 mA - 3000 K	10659.2	79 W	70	8.2	

Light distribution	Part ID	Light source	Rated lumens	Rated input power	CRI	Weight (kg)
	108-2117	LED-36/36W / 350 mA - 4000 K	5620.9	39 W	80	8.2
	108-2117-70	LED-36/36W / 350 mA - 4000 K	6282.2	39 W	70	8.2
	108-2118	LED-36/72W / 700 mA - 4000 K	10013.2	79 W	80	8.2
	108-2118-70	LED-36/72W / 700 mA - 4000 K	11305.2	79 W	70	8.2
	108-2119	LED-42/42W / 350 mA - 3000 K	5979.1	46 W	80	8.2
	108-2119-70	LED-42/42W / 350 mA - 3000 K	6943.4	46 W	70	8.2
	108-2120	LED-42/84W / 700 mA - 3000 K	10928.4	96 W	80	8.20
	108-2120-70	LED-42/84W / 700 mA - 3000 K	12435.7	96 W	70	8.2
	108-2121	LED-42/42W / 350 mA - 4000 K	6557.7	46 W	80	8.2
	108-2121-70	LED-42/42W / 350 mA - 4000 K	7329.2	46 W	70	8.2
	108-2122	LED-42/84W / 700 mA - 4000 K	11682.1	96 W	80	8.2
	108-2122-70	LED-42/84W / 700 mA - 4000 K	13189.4	96 W	70	8.2
rectangular, side throw [R65]	108-0973	LED-24/24W / 350 mA - 4000 K	3643.7	26.5 W	80	7.80
	108-0973-70	LED-24/24W / 350 mA - 4000 K	4072.3	26.5 W	70	7.80
	108-0974	LED-24/48W / 700 mA - 4000 K	6295.7	54 W	80	8.20
	108-0974-70	LED-24/48W / 700 mA - 4000 K	7108	54 W	70	7.80
	108-0975	LED-36/36W / 350 mA - 4000 K	5465.5	39 W	80	8.20
	108-0975-70	LED-36/36W / 350 mA - 4000 K	6108.5	39 W	70	8.20
	108-0976	LED-36/72W / 700 mA - 4000 K	9443.5	79 W	80	8.20
	108-0976-70	LED-36/72W / 700 mA - 4000 K	10662	79 W	70	8.20
	108-0977	LED-42/42W / 350 mA - 4000 K	6376.4	46 W	80	8.20
	108-0977-70	LED-42/42W / 350 mA - 4000 K	7126.6	46 W	70	8.20
	108-0978	LED-42/84W / 700 mA - 4000 K	11017.4	96 W	80	8.20
	108-0978-70	LED-42/84W / 700 mA - 4000 K	12439	96 W	70	8.20
	108-1069	LED-24/24W / 350 mA - 3000 K	3322.2	26.5 W	80	8.20
	108-1069-70	LED-24/24W / 350 mA - 3000 K	3858	26.5 W	70	7.80
	108-1071	LED-24/48W / 700 mA - 3000 K	5889.5	54 W	80	8.20
	108-1071-70	LED-24/48W / 700 mA - 3000 K	6701.8	54 W	70	7.80
	108-1073	LED-36/36W / 350 mA - 3000 K	4983.3	39 W	80	8.20
	108-1073-70	LED-36/36W / 350 mA - 3000 K	5787	39 W	70	8.20
	108-1075	LED-36/72W / 700 mA - 3000 K	8834.2	79 W	80	8.20
	108-1075-70	LED-36/72W / 700 mA - 3000 K	10052.8	79 W	70	8.20
	108-1077	LED-42/42W / 350 mA - 3000 K	5813.8	46 W	80	8.20
	108-1077-70	LED-42/42W / 350 mA - 3000 K	6751.5	46 W	70	8.20
	108-1079	LED-42/84W / 700 mA - 3000 K	10306.6	96 W	80	8.20
	108-1079-70	LED-42/84W / 700 mA - 3000 K	11728.2	96 W	70	8.20

Light distribution	Part ID	Light source	Rated lumens	Rated input power	CRI	Weight (kg)
	108-1858	LED-36/108W / 1050 mA - 4000 K	13656.7	119 W	80	8.20
	108-1858-70	LED-36/108W / 1050 mA - 4000 K	15477.6	119 W	70	8.20
	108-1864	LED-36/108W / 1050 mA - 3000 K	13049.8	119 W	80	8.20
	108-1864-70	LED-36/108W / 1050 mA - 3000 K	14870.7	119 W	70	8.20
	108-2090	LED-42/126W / 1050 mA - 3000 K	15224.7	136 W	80	8.20
	108-2090-70	LED-42/126W / 1050 mA - 3000 K	17349.1	136 W	70	8.20
	108-2091	LED-42/126W / 1050 mA - 4000 K	15932.8	136 W	80	8.20
	108-2091-70	LED-42/126W / 1050 mA - 4000 K	18057.2	136 W	70	8.20
	108-2242	LED-24/48W / 700 mA - 2700 K	5483.3	54 W	80	8.20
	108-2242-70	LED-24/48W / 700 mA - 2700 K	5889.5	54 W	70	7.80
	108-2375	LED-24/24W / 350 mA - 2700 K	3107.8	26.5 W	80	8.20
	108-2375-70	LED-24/24W / 350 mA - 2700 K	3322.2	26.5 W	70	7.80
	108-2376	LED-36/36W / 350 mA - 2700 K	4661.8	39 W	80	8.20
	108-2376-70	LED-36/36W / 350 mA - 2700 K	4983.3	39 W	70	8.20
	108-2377	LED-36/72W / 700 mA - 2700 K	8225	79 W	80	8.20
	108-2377-70	LED-36/72W / 700 mA - 2700 K	8834.2	79 W	70	8.20
	108-2378	LED-36/108W / 1050 mA - 2700 K	12442.8	119 W	80	8.20
	108-2378-70	LED-36/108W / 1050 mA - 2700 K	14263.7	119 W	70	8.20
	108-2379	LED-42/42W / 350 mA - 2700 K	5438.7	46 W	80	8.20
	108-2379-70	LED-42/42W / 350 mA - 2700 K	5813.8	46 W	70	8.20
	108-2380	LED-42/84W / 700 mA - 2700 K	9595.8	96 W	80	8.20
	108-2380-70	LED-42/84W / 700 mA - 2700 K	10306.6	96 W	70	8.20
	108-2381	LED-42/126W / 1050 mA - 2700 K	14516.6	136 W	80	8.20
	108-2381-70	LED-42/126W / 1050 mA - 2700 K	16641	136 W	70	8.20

VFL540 LED

Pole mounted

Control

Eco Step Dim® Basic

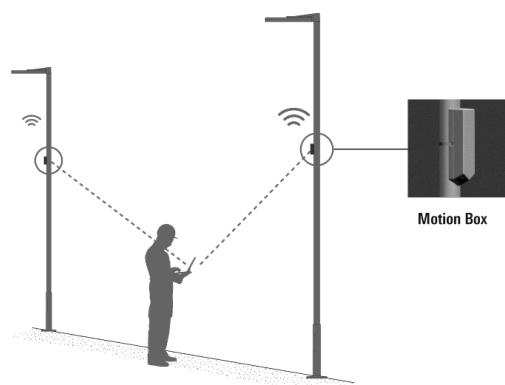
Description	Part ID
Eco Step Dim® Basic LED	430-0001

Eco Step Dim® Advanced

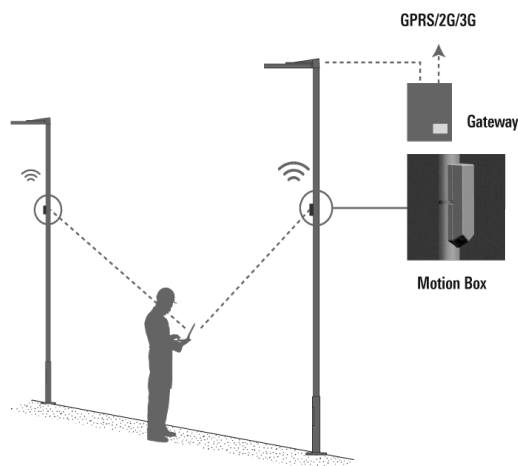
Description	Part ID
Eco Step Dim® Advanced LED	430-0002

Eco Step Dim® Motion

Description	Part ID
Eco Step Dim® Motion - Linked	430-0021



Description	Part ID
Eco Step Dim® Motion - Connected	430-0022



R2C Ready to Connect

Description	Part ID
R2C Ready to Connect (top)	430-0019
R2C Ready to Connect (below)	430-0027
R2C Ready to Connect (top and below)	430-0032

Wild-Light Eco Step Dim® Advanced

Description	Part ID	Additional information
Wild-Light Eco Step Dim® Advanced	430-0034	<p>Fully automatic independent dimming pre-set, without additional installation effort, Example: Starting the night with warm white (3000 K from 20:00 to 22:00), reduced to biodiversity friendly in the heart of the night (2200 K from 22:00 to 06:00), and returning back to warm white in the early morning (3000 K from 06:00 to 07:00).</p> <p>This is the easiest to implement solution to create a nature-friendly lighting scenario, as no additional installations or external controls are needed. All pre-settings are made in the two LED drivers. The dimming values are programmed into the driver during the production of the luminaires. An optional link with sunrise and sunset times can mean additional optimisation. A customer-specific configuration is possible.</p> <p>The settings can be changed directly on the LED driver at any time (NFC). The necessary tool is standardised and can also be obtained from WE-EF as an optional extra.</p>
Wild-Light Motion	430-0035	

Citygrid Motion On Pole

Description	Part ID	Additional information
Citygrid Motion - Entry-Package	420-0011	Citygrid Motion. Das All-in-One Gerät, das vorhandene Leuchten in ein intelligentes Lichtsystem verwandeln kann.

Einstiegs-Paket

WE-EF liefert und konfiguriert Leuchten und Citygrid System einmalig ab Werk bzw. am Einsatzort. Neukonfiguration als Service abrufbar (kostenpflichtig). Gateway/App nicht inbegriffen.

Anwendungen: Kommunale Einzelprojekte, Insellösungen und Feldversuche für Smart Lighting, z.B. einzelne Straßen, Wege oder Plätze. Halböffentliche oder private Projekte, z.B. Firmengelände, Parkplatz.



Description	Part ID	Additional information
Citygrid Motion - Standalone-Package	420-0012	<p>Citygrid Motion On Pole Controller.</p> <p>The Citygrid Motion On Pole Controller is the all-in-one device that can convert existing luminaires into an intelligent lighting system.</p> <p>The standalone package:</p> <p>Dongle & apps included; operators can configure, change and service the Citygrid system themselves (on site) using the apps on their mobile device.</p> <p>Applications: demarcated communal projects (street, square, district) or private projects (larger company sites, commercial estates) if qualified personnel are available for the operation of the system.</p>

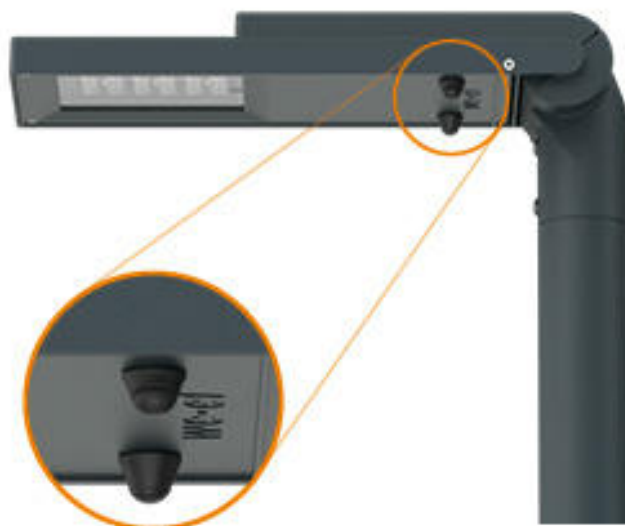


Description	Part ID	Additional information
Citygrid Motion - Smart-City-Package	420-0013	<p>Citygrid Motion On Pole Controller</p> <p>The Citygrid Motion On Pole Controller is the all-in-one device that can convert existing luminaires into an intelligent lighting system.</p> <p>The Smart-City package: Internet gateway (via mobile phone) and dashboard included; operators can configure, change and service themselves (remotely). Networked Smart-City functions (data collection, remote maintenance, etc.).</p> <p>Applications: larger communal projects or field trials in the context of Smart City; operator has qualified personnel (municipal utilities).</p>



Citygrid Motion On Luminaire

Description	Part ID	Additional information
Citygrid Motion - Entry-Package	420-0021	<p>Citygrid On Luminaire - Entry Package Citygrid On Luminaire. Die Sensoren erkennen Bewegung und Verkehr beim Betreten des Sensor und Leuchtenfelds.</p> <p>Einstiegs-Paket WE-EF liefert und konfiguriert Leuchten und Citygrid System einmalig ab Werk bzw. am Einsatzort. Neukonfiguration als Service abrufbar (kostenpflichtig). Gateway/App nicht inbegriffen.</p> <p>Anwendungen: Kommunale Einzelprojekte, Insellösungen und Feldversuche für Smart Lighting, z.B. einzelne Straßen, Wege oder Plätze. Halböffentliche oder private Projekte, z.B. Firmengelände, Parkplatz. Citygrid built-in light controller with angled sensors The sensors detect motion and traffic on entering the sensor and lighting field.</p> <p>The entry-level package: WE-EF supplies and configures luminaires and the Citygrid system once ex works or on site. Reconfiguration is available as a service (chargeable). Gateway/app not included.</p> <p>Applications: individual communal projects, isolated solutions and field trials for smart lighting, e.g. single streets, paths or squares. Semi-public or private projects, e.g. company site, car park.</p>



Description	Part ID	Additional information
Citygrid Motion - Standalone-Package	420-0022	<p>Citygrid Motion built-in light controller with angled sensors The sensors detect motion and traffic on entering the sensor and lighting field.</p> <p>The standalone package: Dongle & apps included; operators can configure, change and service the Citygrid system themselves (on site) using the apps on their mobile device. Applications: demarcated communal projects (street, square, district) or private projects (larger company sites, commercial estates) if qualified personnel are available for the operation of the system.</p>



VFL540 LED

Pole mounted

Description	Part ID	Additional information
Citygrid Motion - Smart-City-Package	420-0023	<p>Citygrid Motion built-in light controller with angled sensors The sensors detect motion and traffic on entering the sensor and lighting field.</p> <p>The Smart-City package: Internet gateway (via mobile phone) and dashboard included; operators can configure, change and service themselves (remotely). Networked Smart-City functions (data collection, remote maintenance, etc.). Applications: larger communal projects or field trials in the context of Smart City; operator has qualified personnel (municipal utilities).</p>



Citygrid Motion Zhaga

Description	Part ID	Additional information
Citygrid Motion - Standalone-Package	420-0032	<p>Citygrid Motion Zhaga controller with sensor. The compact all-in-one design turns every luminaire with a Zhaga Book 18 socket facing the street surface into motion-controlled, intelligent street & area lighting.</p> <p>The standalone package: Dongle & apps included; operators can configure, change and service the Citygrid system themselves (on site) using the apps on their mobile device. Applications: demarcated communal projects (street, square, district) or private projects (larger company sites, commercial estates) if qualified personnel are available for the operation of the system.</p>



VFL540 LED

Pole mounted

Description	Part ID	Additional information
Citygrid Motion - Smart-City-Package	420-0033	<p>Citygrid Motion Zhaga controller with sensor.</p> <p>The compact all-in-one design turns every luminaire with a Zhaga Book 18 socket facing the street surface into motion-controlled, intelligent street & area lighting.</p> <p>The Smart-City package: Internet gateway (via mobile phone) and dashboard included; operators can configure, change and service themselves (remotely). Networked Smart-City functions (data collection, remote maintenance, etc.).</p> <p>Applications: larger communal projects or field trials in the context of Smart City; operator has qualified personnel (municipal utilities).</p>



Wild-Light Citygrid Motion On Pole

Description	Part ID	Additional information
Wild-Light Citygrid Motion - Entry- Package	420-1111	Citygrid Motion On Pole Controller. The Citygrid Motion On Pole Controller is the all-in-one device that can convert existing luminaires into an intelligent lighting system.

The entry-level package:

WE-EF supplies and configures luminaires and the Citygrid system once ex works or on site.
Reconfiguration is available as a service (chargeable). Gateway/app not included.

Applications: individual communal projects, isolated solutions and field trials for smart
lighting, e.g. single streets, paths or squares. Semi-public or private projects, e.g. company
site, car park.



Description	Part ID	Additional information
Wild-Light Citygrid Motion - Standalone-Package	420-1112	Citygrid Motion On Pole Controller for Wild-Light. The Citygrid Motion On Pole Controller is the all-in-one device that can convert existing luminaires into an intelligent lighting system.

The standalone package:
Dongle & apps included; operators can configure, change and service the Citygrid system themselves (on site) using the apps on their mobile device.
Applications: demarcated communal projects (street, square, district) or private projects (larger company sites, commercial estates) if qualified personnel are available for the operation of the system.



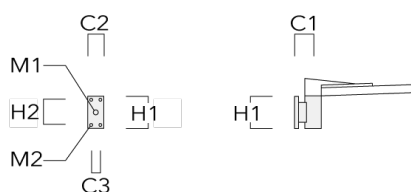
Description	Part ID	Additional information
Wild-Light Citygrid Motion - Smart-City-Package	420-1113	<p>Citygrid Motion On Pole Controller for Wild-Light.</p> <p>The Citygrid Motion On Pole Controller is the all-in-one device that can convert existing luminaires into an intelligent lighting system.</p> <p>The Smart-City package: Internet gateway (via mobile phone) and dashboard included; operators can configure, change and service themselves (remotely). Networked Smart-City functions (data collection, remote maintenance, etc.).</p> <p>Applications: larger communal projects or field trials in the context of Smart City; operator has qualified personnel (municipal utilities).</p>



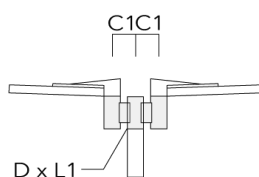
Mounting Accessories

Wall and pole brackets RV

Description	Part ID	Additional information	C1	C2	C3	D1	D × L1	H1	H2	M1	M2	Weight (kg)	C	D	H
RV0 Wall bracket	108-0979	RV0 Wall bracket	108	100	60			200	160	38	12	2.00	108		

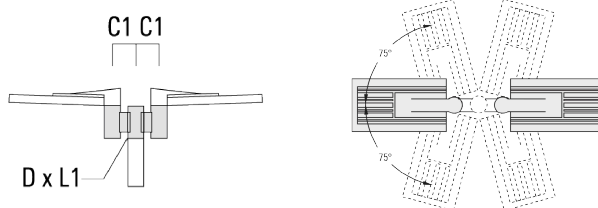


RV2-76 Pole bracket, double	108-0980		147				76 x 100					4.80	147	76	200
-----------------------------	----------	--	-----	--	--	--	----------	--	--	--	--	------	-----	----	-----

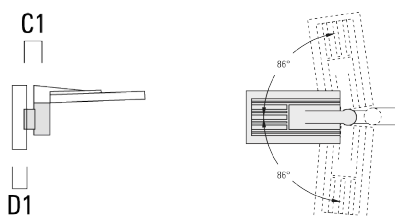


Pole mounted

Description	Part ID	Additional information	C1	C2	C3	D1	D × L1	H1	H2	M1	M2	Weight (kg)	C	D	H
RV2-60 Pole bracket, double	108-0981	147					60 x 100					4.80	147	60	200



RV5 Pole bracket	108-0982	108				76-240						1.70	106	200
------------------	----------	-----	--	--	--	--------	--	--	--	--	--	------	-----	-----



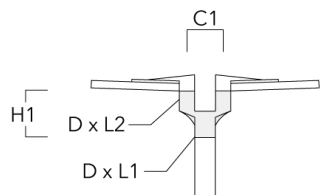
VFL540 LED

Pole mounted

we-ef

Post top fitter AKV

Description	Part ID	C1	D × L1	D × L2	H1	Weight (kg)
AKV2-76	300-0053	180	76x100	76x80	235	1.50



WE-EF LEUCHTEN GmbH

Töpinger Straße 16, 29646 Bispingen, Germany - Phone: +49 5194 909-0
info@we-ef.com - <https://we-ef.com>

Subject to technical changes and errors. - Generated on 23/11/2024

Optical Accessories**Light shield**

Description	Part ID	Additional information
LS180-[A60]	430-0038	Light shield LS180 to greatly reduce or eliminate light pollution. PA injection moulded component, black matt. Suitable for asymmetric light distribution [A60].
LS180	430-0029	Glare Shield for backlight spill. Glare Shield factory-installed or available as retrofit kit. Suitable for [S60], [S65], [S70], [R65], [P65] lenses. Must be specified at time of ordering.