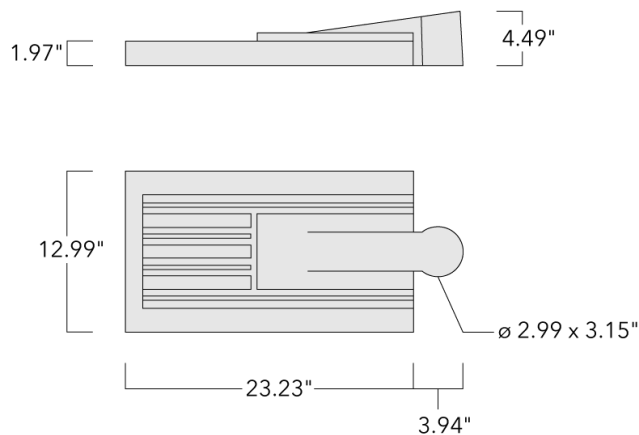


# VFL540 LED

## Street and Area Lighting



### Description

Pole or wall-mounted LED luminaire with integrated heat sinks.

IP66. Class I or Class II. IK08. Marine-grade, die-cast aluminum alloy. 5CE superior corrosion protection including PCS hardware. Silicone CCG® Controlled Compression Gasket. RFC® Reflection Free Contour main lens. CAD-optimized optics for superior illumination and glare control. Integral driver in thermally separated compartment. OLC® One LED Concept. Factory-installed LED circuit board. 0-10V Dimming comes standard with luminaire. Spigot Ø 3"x5" optional available, must be indicated during order placement. Luminaire is factory-sealed and does not need to be opened during installation.

Recommended mounting height 20-40 ft, depending on lamp type selected.

Specify product with 7 Digit product code - Finish Color. Accessories, such as mounting, optical, and electrical, must be specified separately.

Example: XXX-XXXX-9004 (Black)  
+ XXX-XXXX (Accessory 1)

### WE-EF LIGHTING USA, LLC

410-D Keystone Drive, 15086 Warrendale, PA 15086 - Phone: +1 724 742 0030  
customersupport.usa@we-ef.com - <https://we-ef.com/us>  
Subject to technical changes and errors. - Generated on 11/23/2024

## VFL540 LED

### Street and Area Lighting

**we-ef**





For DarkSky compliant configurations of this product, please find the spec sheet and DarkSky certificate in the library.

#### **WE-EF LIGHTING USA, LLC**

410-D Keystone Drive, 15086 Warrendale, PA 15086 - Phone: +1 724 742 0030  
customersupport.usa@we-ef.com - <https://we-ef.com/us>  
Subject to technical changes and errors. - Generated on 11/23/2024

**Street and Area Lighting****Specifications****Material description**

---

Body	Marine-grade, die-cast aluminium alloy
Lens	PMMA RFC Reflection Contour Lens technology
Colors	 RAL9004 Black  RAL9007 Grey Metallic  RAL9016 White  RAL8019 Dark Bronze
Gasket	Silicone rubber gasket
Fasteners	PCS Polymer Coated Stainless Steel hardware
Ingress protection	IP66
Impact resistance	IK08
Corrosion resistance	5CE
Windage	2.10 ft <sup>2</sup>

---

**Electrical description**

---

Power supply	Integral [ECG] electronic driver 120V-277V. 0-10V dimmable, to be specified with order.
Driver / Ballast	Integral EC electronic converter
Power factor	> 0.9
Surge protection	In-line bracket 10kV Surge Protector

---

**Additional information**

---

Lifetime	Ta=25°/40° L90B10 > 90000h
BUG Rating	Please see individual Spec Sheets for classification of Backlight, Uplight and Glare.
Listings	ETL, UL-1598, CSA-C22.2#250.0. Suitable for Wet Locations.

---

**WE-EF LIGHTING USA, LLC**

410-D Keystone Drive, 15086 Warrendale, PA 15086 - Phone: +1 724 742 0030

customersupport.usa@we-ef.com - <https://we-ef.com/us>

Subject to technical changes and errors. - Generated on 11/23/2024

# VFL540 LED

## Street and Area Lighting

### Options

#### Light distribution



[S60] Type III Short



[S70] Type II Short



[A60] Type IV Very Short



[S65] Type III Medium



[R65] Type IV Medium



pedestrian crossing, left-hand traffic [P45L]



pedestrian crossing, right-hand traffic [P45R]



[P65] Type II Medium

#### Color temperature



3000 K



4000 K



2700 K

#### Nominal Watt

29 W

42 W

49 W

58 W

86 W

1 W

15 W

0 W

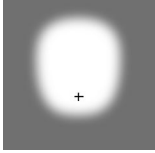
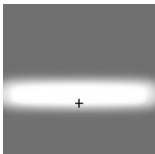
#### WE-EF LIGHTING USA, LLC

410-D Keystone Drive, 15086 Warrendale, PA 15086 - Phone: +1 724 742 0030

customersupport.usa@we-ef.com - <https://we-ef.com/us>

Subject to technical changes and errors. - Generated on 11/23/2024

### Configurations

Light distribution	Part ID	Light source	Rated lumens	Rated input power	CRI	Weight (lb)
[A60] Type IV Very Short 	108-0926	LED-24/24W / 350 mA - 4000 K	3566.2	26.5 W	80	18.10
	108-0929	LED-36/36W / 350 mA - 4000 K	5349.3	39 W	80	18.10
	108-0932	LED-42/42W / 350 mA - 4000 K	6240.9	46 W	80	18.10
	108-0938	LED-24/48W / 700 mA - 4000 K	6145.6	54 W	80	17.20
	108-0941	LED-36/72W / 700 mA - 4000 K	9218.5	79 W	80	18.10
	108-0944	LED-42/84W / 700 mA - 4000 K	10754.9	96 W	80	18.10
	108-1057	LED-24/24W / 350 mA - 3000 K	3251.5	26.5 W	80	18.10
	108-1059	LED-24/48W / 700 mA - 3000 K	5749.1	54 W	80	17.20
	108-1061	LED-36/36W / 350 mA - 3000 K	4877.3	39 W	80	18.10
	108-1063	LED-36/72W / 700 mA - 3000 K	8623.7	79 W	80	18.10
	108-1065	LED-42/42W / 350 mA - 3000 K	5690.2	46 W	80	18.10
	108-1067	LED-42/84W / 700 mA - 3000 K	10061	96 W	80	18.10
	108-1859	LED-36/108W / 1050 mA - 4000 K	13352.6	119 W	80	18.10
	108-1865	LED-36/108W / 1050 mA - 3000 K	12759.2	119 W	80	18.10
	108-2088	LED-42/126W / 1050 mA - 3000 K	14885.7	136 W	80	18.10
	108-2089	LED-42/126W / 1050 mA - 4000 K	15578.1	136 W	80	18.10
	108-2382	LED-24/24W / 350 mA - 2700 K	3041.8	26.5 W	80	18.10
	108-2383	LED-24/48W / 700 mA - 2700 K	5352.6	54 W	80	17.20
	108-2384	LED-36/36W / 350 mA - 2700 K	4562.6	39 W	80	18.10
	108-2385	LED-36/72W / 700 mA - 2700 K	8029	79 W	80	18.10
108-2386	LED-36/108W / 1050 mA - 2700 K	12165.7	119 W	80	18.10	
108-2387	LED-42/42W / 350 mA - 2700 K	5323.1	46 W	80	18.10	
108-2388	LED-42/84W / 700 mA - 2700 K	9367.1	96 W	80	18.10	
108-2389	LED-42/126W / 1050 mA - 2700 K	14193.4	136 W	80	18.10	
[P65] Type II Medium 	108-1860	LED-36/108W / 1050 mA - 4000 K	14722.8	119 W	80	8.2
	108-1860-70	LED-36/108W / 1050 mA - 4000 K	16685.9	119 W	70	8.2
	108-1866	LED-36/108W / 1050 mA - 3000 K	14068.5	119 W	80	8.2
	108-1866-70	LED-36/108W / 1050 mA - 3000 K	16031.5	119 W	70	8.2
	108-2105	LED-42/126W / 1050 mA - 3000 K	16413.2	136 W	80	8.2
	108-2105-70	LED-42/126W / 1050 mA - 3000 K	18703.4	136 W	70	8.2
	108-2106	LED-42/126W / 1050 mA - 4000 K	17176.6	136 W	80	8.2
	108-2106-70	LED-42/126W / 1050 mA - 4000 K	19466.9	136 W	70	8.2

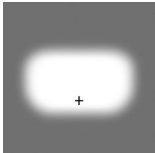
#### WE-EF LIGHTING USA, LLC

410-D Keystone Drive, 15086 Warrendale, PA 15086 - Phone: +1 724 742 0030

customersupport.usa@we-ef.com - <https://we-ef.com/us>

Subject to technical changes and errors. - Generated on 11/23/2024

## Street and Area Lighting

Light distribution	Part ID	Light source	Rated lumens	Rated input power	CRI	Weight (lb)
	108-2115	LED-36/36W / 350 mA - 3000 K	5124.9	39 W	80	8.2
	108-2115-70	LED-36/36W / 350 mA - 3000 K	5951.5	39 W	70	8.2
	108-2116	LED-36/72W / 700 mA - 3000 K	9367.2	79 W	80	8.2
	108-2116-70	LED-36/72W / 700 mA - 3000 K	10659.2	79 W	70	8.2
	108-2117	LED-36/36W / 350 mA - 4000 K	5620.9	39 W	80	8.2
	108-2117-70	LED-36/36W / 350 mA - 4000 K	6282.2	39 W	70	8.2
	108-2118	LED-36/72W / 700 mA - 4000 K	10013.2	79 W	80	8.2
	108-2118-70	LED-36/72W / 700 mA - 4000 K	11305.2	79 W	70	8.2
	108-2119	LED-42/42W / 350 mA - 3000 K	5979.1	46 W	80	8.2
	108-2119-70	LED-42/42W / 350 mA - 3000 K	6943.4	46 W	70	8.2
	108-2120-70	LED-42/84W / 700 mA - 3000 K	12435.7	96 W	70	8.2
	108-2121	LED-42/42W / 350 mA - 4000 K	6557.7	46 W	80	8.2
	108-2121-70	LED-42/42W / 350 mA - 4000 K	7329.2	46 W	70	8.2
	108-2122	LED-42/84W / 700 mA - 4000 K	11682.1	96 W	80	8.2
	108-2122-70	LED-42/84W / 700 mA - 4000 K	13189.4	96 W	70	8.2
[R65] Type IV Medium	108-0973	LED-24/24W / 350 mA - 4000 K	3643.7	26.5 W	80	18.10
	108-0974	LED-24/48W / 700 mA - 4000 K	6295.7	54 W	80	17.20
	108-0975	LED-36/36W / 350 mA - 4000 K	5465.5	39 W	80	18.10
	108-0976	LED-36/72W / 700 mA - 4000 K	9443.5	79 W	80	18.10
	108-0977	LED-42/42W / 350 mA - 4000 K	6376.4	46 W	80	18.10
	108-0978	LED-42/84W / 700 mA - 4000 K	11017.4	96 W	80	18.10
	108-1069	LED-24/24W / 350 mA - 3000 K	3322.2	26.5 W	80	18.10
	108-1071	LED-24/48W / 700 mA - 3000 K	5889.5	54 W	80	17.20
	108-1073	LED-36/36W / 350 mA - 3000 K	4983.3	39 W	80	18.10
	108-1075	LED-36/72W / 700 mA - 3000 K	8834.2	79 W	80	18.10
	108-1077	LED-42/42W / 350 mA - 3000 K	5813.8	46 W	80	18.10
	108-1079	LED-42/84W / 700 mA - 3000 K	10306.6	96 W	80	18.10
	108-1858	LED-36/108W / 1050 mA - 4000 K	13656.7	119 W	80	18.10
	108-1864	LED-36/108W / 1050 mA - 3000 K	13049.8	119 W	80	18.10
	108-2090	LED-42/126W / 1050 mA - 3000 K	15224.7	136 W	80	18.10
	108-2091	LED-42/126W / 1050 mA - 4000 K	15932.8	136 W	80	18.10
	108-2242	LED-24/48W / 700 mA - 2700 K	5483.3	54 W	80	17.20
	108-2375	LED-24/24W / 350 mA - 2700 K	3107.8	26.5 W	80	18.10

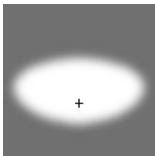
## WE-EF LIGHTING USA, LLC

410-D Keystone Drive, 15086 Warrendale, PA 15086 - Phone: +1 724 742 0030

customersupport.usa@we-ef.com - <https://we-ef.com/us>

Subject to technical changes and errors. - Generated on 11/23/2024

## Street and Area Lighting

Light distribution	Part ID	Light source	Rated lumens	Rated input power	CRI	Weight (lb)
	108-2376	LED-36/36W / 350 mA - 2700 K	4661.8	39 W	80	18.10
	108-2377	LED-36/72W / 700 mA - 2700 K	8225	79 W	80	18.10
	108-2378	LED-36/108W / 1050 mA - 2700 K	12442.8	119 W	80	18.10
	108-2379	LED-42/42W / 350 mA - 2700 K	5438.7	46 W	80	18.10
	108-2380	LED-42/84W / 700 mA - 2700 K	9595.8	96 W	80	18.10
	108-2381	LED-42/126W / 1050 mA - 2700 K	14516.6	136 W	80	18.10
[S60] Type III Short	108-0842	LED-24/24W / 350 mA - 3000 K	3491.8	26.5 W	80	17.20
	108-0846	LED-36/36W / 350 mA - 3000 K	5237.7	39 W	80	18.10
	108-0850	LED-42/42W / 350 mA - 3000 K	6110.7	46 W	80	18.10
	108-0875	LED-24/24W / 350 mA - 4000 K	3829.7	26.5 W	80	18.10
	108-0877	LED-36/36W / 350 mA - 4000 K	5744.6	39 W	80	18.10
	108-0879	LED-42/42W / 350 mA - 4000 K	6702	46 W	80	18.10
	108-0901	LED-24/48W / 700 mA - 4000 K	6701	54 W	80	17.20
	108-0902	LED-24/48W / 700 mA - 3000 K	6268.7	54 W	80	17.20
	108-0907	LED-36/72W / 700 mA - 4000 K	10051.6	79 W	80	18.10
	108-0908	LED-36/72W / 700 mA - 3000 K	9403.1	79 W	80	18.10
	108-0913	LED-42/84W / 700 mA - 4000 K	11726.8	96 W	80	18.10
	108-0914	LED-42/84W / 700 mA - 3000 K	10970.2	96 W	80	18.10
	108-1857	LED-36/108W / 1050 mA - 4000 K	14442.3	119 W	80	18.10
	108-1863	LED-36/108W / 1050 mA - 3000 K	13800.4	119 W	80	18.10
	108-2092	LED-42/126W / 1050 mA - 3000 K	16100.5	136 W	80	18.10
	108-2093	LED-42/126W / 1050 mA - 4000 K	16849.3	136 W	80	18.10
	108-2350	LED-24/24W / 350 mA - 2700 K	3266.5	26.5 W	80	17.20
	108-2351	LED-24/48W / 700 mA - 2700 K	5836.4	54 W	80	17.20
	108-2352	LED-36/36W / 350 mA - 2700 K	4899.8	39 W	80	18.10
	108-2353	LED-36/72W / 700 mA - 2700 K	8754.6	79 W	80	18.10
	108-2354	LED-36/108W / 1050 mA - 2700 K	13158.5	119 W	80	18.10
	108-2355	LED-42/42W / 350 mA - 2700 K	5716.4	46 W	80	18.10
	108-2356	LED-42/84W / 700 mA - 2700 K	10213.7	96 W	80	18.10
	108-2357	LED-42/126W / 1050 mA - 2700 K	15351.6	136 W	80	18.10
[S65] Type III Medium	103-2358	LED-24/24W / 350 mA - 2700 K	3272.1	26.5 W	80	18.10
	108-0967	LED-24/24W / 350 mA - 4000 K	3836.2	26.5 W	80	18.10
	108-0968	LED-24/48W / 700 mA - 4000 K	6763.7	54 W	80	17.20

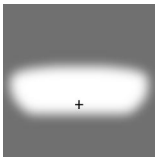
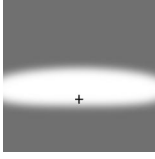
## WE-EF LIGHTING USA, LLC

410-D Keystone Drive, 15086 Warrendale, PA 15086 - Phone: +1 724 742 0030

customersupport.usa@we-ef.com - <https://we-ef.com/us>

Subject to technical changes and errors. - Generated on 11/23/2024

## Street and Area Lighting

Light distribution	Part ID	Light source	Rated lumens	Rated input power	CRI	Weight (lb)
	108-0969	LED-36/36W / 350 mA - 4000 K	5754.4	39 W	80	18.10
	108-0970	LED-36/72W / 700 mA - 4000 K	10145.6	79 W	80	18.10
	108-0971	LED-42/42W / 350 mA - 4000 K	6713.4	46 W	80	18.10
	108-0972	LED-42/84W / 700 mA - 4000 K	11836.5	96 W	80	18.10
	108-1081	LED-24/24W / 350 mA - 3000 K	3497.7	26.5 W	80	18.10
	108-1083	LED-24/48W / 700 mA - 3000 K	6327.3	54 W	80	18.10
	108-1085	LED-36/36W / 350 mA - 3000 K	5246.6	39 W	80	18.10
	108-1087	LED-36/72W / 700 mA - 3000 K	9491	79 W	80	18.10
	108-1089	LED-42/42W / 350 mA - 3000 K	6121.1	46 W	80	18.10
	108-1091	LED-42/84W / 700 mA - 3000 K	11072.8	96 W	80	18.10
	108-1856	LED-36/108W / 1050 mA - 4000 K	14725	119 W	80	18.10
	108-1862	LED-36/108W / 1050 mA - 3000 K	14070.5	119 W	80	18.10
	108-2094	LED-42/126W / 1050 mA - 3000 K	16415.6	136 W	80	18.10
	108-2095	LED-42/126W / 1050 mA - 4000 K	17179.1	136 W	80	18.10
	108-2359	LED-24/48W / 700 mA - 2700 K	5891	54 W	80	18.10
	108-2360	LED-36/36W / 350 mA - 2700 K	4908.1	39 W	80	18.10
	108-2361	LED-36/72W / 700 mA - 2700 K	8836.5	79 W	80	18.10
	108-2362	LED-36/108W / 1050 mA - 2700 K	13416.1	119 W	80	18.10
	108-2363	LED-42/42W / 350 mA - 2700 K	5726.1	46 W	80	18.10
	108-2364	LED-42/84W / 700 mA - 2700 K	10309.2	96 W	80	18.10
108-2365	LED-42/126W / 1050 mA - 2700 K	15652.1	136 W	80	18.10	
[S70] Type II Short	108-0854	LED-24/24W / 350 mA - 3000 K	3423	26.5 W	80	17.20
	108-0858	LED-36/36W / 350 mA - 3000 K	5134.5	39 W	80	18.10
	108-0862	LED-42/42W / 350 mA - 3000 K	5990.2	46 W	80	18.10
	108-0881	LED-24/24W / 350 mA - 4000 K	3754.3	26.5 W	80	18.10
	108-0883	LED-36/36W / 350 mA - 4000 K	5631.4	39 W	80	18.10
	108-0885	LED-42/42W / 350 mA - 4000 K	6569.9	46 W	80	18.10
	108-0904	LED-24/48W / 700 mA - 4000 K	6585.8	54 W	80	17.20
	108-0905	LED-24/48W / 700 mA - 3000 K	6160.9	54 W	80	17.20
	108-0910	LED-36/72W / 700 mA - 4000 K	9878.6	79 W	80	18.10
	108-0911	LED-36/72W / 700 mA - 3000 K	9241.3	79 W	80	18.10
	108-0916	LED-42/84W / 700 mA - 4000 K	11525.1	96 W	80	18.10
	108-0917	LED-42/84W / 700 mA - 3000 K	10781.5	96 W	80	18.10

## WE-EF LIGHTING USA, LLC

410-D Keystone Drive, 15086 Warrendale, PA 15086 - Phone: +1 724 742 0030

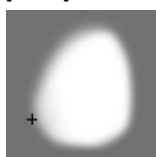
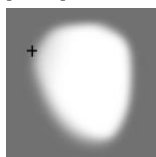
customersupport.usa@we-ef.com - <https://we-ef.com/us>

Subject to technical changes and errors. - Generated on 11/23/2024



## Street and Area Lighting

Light distribution	Part ID	Light source	Rated lumens	Rated input power	CRI	Weight (lb)
	108-1861	LED-36/108W / 1050 mA - 3000 K	13585.4	119 W	80	18.10
	108-1923	LED-36/108W / 1050 mA - 4000 K	14217.3	119 W	80	18.10
	108-2096	LED-42/126W / 1050 mA - 3000 K	15849.6	136 W	80	18.10
	108-2097	LED-42/126W / 1050 mA - 4000 K	16586.8	136 W	80	18.10
	108-2367	LED-24/24W / 350 mA - 2700 K	3202.2	26.5 W	80	17.20
	108-2368	LED-24/48W / 700 mA - 2700 K	5736	54 W	80	17.20
	108-2369	LED-36/36W / 350 mA - 2700 K	4803.2	39 W	80	18.10
	108-2370	LED-36/72W / 700 mA - 2700 K	8604	79 W	80	18.10
	108-2371	LED-36/108W / 1050 mA - 2700 K	12953.5	119 W	80	18.10
	108-2372	LED-42/42W / 350 mA - 2700 K	5603.8	46 W	80	18.10
	108-2373	LED-42/84W / 700 mA - 2700 K	10038	96 W	80	18.10
	108-2374	LED-42/126W / 1050 mA - 2700 K	15112.4	136 W	80	18.10
pedestrian crossing, left-hand traffic [P45L]	108-1983	LED-36/72W / 700 mA - 3000 K	9127.9	79 W	80	18.08
	108-1984	LED-36/72W / 700 mA - 4000 K	9757.4	79 W	80	18.08
	108-1987	LED-42/84W / 700 mA - 3000 K	10649.2	96 W	80	18.08
	108-1988	LED-42/84W / 700 mA - 4000 K	11383.6	96 W	80	18.08
	108-2528	LED-36/72W / 700 mA - 2700 K	8498.4	79 W	80	18.08
	108-2529	LED-42/84W / 700 mA - 2700 K	9914.8	96 W	80	18.08
pedestrian crossing, right-hand traffic [P45R]	108-1985	LED-36/72W / 700 mA - 3000 K	9018.9	79 W	80	18.08
	108-1986	LED-36/72W / 700 mA - 4000 K	9640.9	79 W	80	18.08
	108-1989	LED-42/84W / 700 mA - 3000 K	10522	96 W	80	18.08
	108-1990	LED-42/84W / 700 mA - 4000 K	11247.7	96 W	80	18.08
	108-2390	LED-36/72W / 700 mA - 2700 K	8396.9	79 W	80	18.08
	108-2391	LED-42/84W / 700 mA - 2700 K	9796.4	96 W	80	18.08



### WE-EF LIGHTING USA, LLC

410-D Keystone Drive, 15086 Warrendale, PA 15086 - Phone: +1 724 742 0030

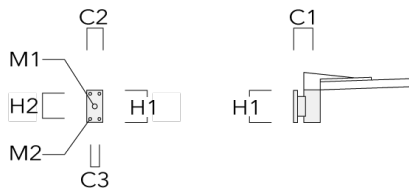
customersupport.usa@we-ef.com - <https://we-ef.com/us>

Subject to technical changes and errors. - Generated on 11/23/2024

**Mounting Accessories**

**Wall and pole brackets RV**

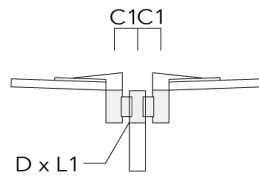
Description	Part ID	Additional information	C1	C2	C3	D1	D × L1	H1	H2	M1	M2	Weight (lb)	C	D	H
RVO Wall bracket	108-0979	RVO Wall bracket		4.25"	3.94"	2.36"			7.87"	6.3"	1.5"	0.47"	4.41	108	



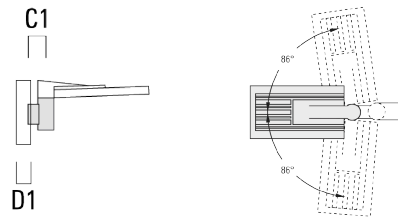
# VFL540 LED

## Street and Area Lighting

Description	Part ID	Additional information	C1	C2	C3	D1	D × L1	H1	H2	M1	M2	Weight (lb)	C	D	H
RV2-76 Pole bracket, double	108-0980	5.79					3 x 4					10.58	147	76	200



RV5 Pole bracket	108-0982	4.25"					3.0"-9.5"					3.75 lbs	106		200
------------------	----------	-------	--	--	--	--	-----------	--	--	--	--	----------	-----	--	-----



### WE-EF LIGHTING USA, LLC

410-D Keystone Drive, 15086 Warrendale, PA 15086 - Phone: +1 724 742 0030

customersupport.usa@we-ef.com - <https://we-ef.com/us>

Subject to technical changes and errors. - Generated on 11/23/2024

**Optical Accessories****Light shield**

Description	Part ID	Additional information
LS180-[A60]	430-0038	Light shield LS180 to greatly reduce or eliminate light pollution. PA injection moulded component, black matt. Suitable for asymmetric light distribution [A60].
LS180	430-0029	Glare Shield for backlight spill. Glare Shield factory-installed or available as retrofit kit. Suitable for [S60], [S65], [S70], [R65], [P65] lenses. Must be specified at time of ordering.