

Description

IP66, Class I. IK08. Marine-grade, die-cast aluminium alloy. 5CE superior corrosion protection including PCS hardware. RFC™ Reflection Free Contour main lens. Silicone CCG® Controlled Compression Gasket. Luminaire is factory-sealed and does not need to be opened during installation.

Integral electronic converter with DALI interface. Advanced thermal management protects LEDs while optimising lumens output. Removable LED boards for upgrading. CAD-optimised optics for superior illumination and glare control. OLC® One LED Concept. Variant with 2200 K or as 'Wild-Light' 2200 K combined with 3000 K with Eco Step Dim® Advanced or Motion available on request, must be specified at time of ordering.

Contact WE-EF direct or your local WE-EF sales representative for an individual solution designed to precisely meet your needs.

Including 0.5 m cable with a cable connector.

Maximum spacing for streetlighting applications depends on wattage and light distribution: 5.5 to 9 times the mounting height.





VFL540 LED

Pole mounted

we-ef

Wild-Light options available on request.

Specifications**Material description**

Body	Marine-grade, die-cast aluminium alloy
Lens	RFC™ Reflection Free Contour main lens
Colours	 RAL9004 Signal black  RAL9007 Grey aluminium  RAL7016 Anthracite grey  RAL9016 Traffic white
Gasket	Silicone CCG® Controlled Compression Gasket
Fasteners	PCS Polymer Coated Stainless Steel Hardware
Ingress protection	IP66
Impact resistance	IK08
Corrosion resistance	5CE
Windage	0.146 m ²

Electrical description

Power supply	220-240V / 50-60 Hz
Driver / Ballast	Integral electronic converter with DALI interface
Power factor	> 0.9

Additional information

Lifetime	Ta=25° L90B10 > 90000h
BUG Rating	Please see individual Spec Sheets for classification of Backlight, Uplight and Glare

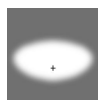
VFL540 LED

Pole mounted

we-ef

Options

Light distribution



asymmetric, side throw [S60]



asymmetric, side throw [S70]



asymmetric, forward throw [A60]



asymmetric, side throw [S65]



rectangular, side throw [R65]



pedestrian crossing, left-hand traffic [P45L]



pedestrian crossing, right-hand traffic [P45R]



pedestrian/bicycle lane [P65]

Colour temperature



3000 K



4000 K



2700 K

Nominal Watt

42 W

49 W

86 W

1 W

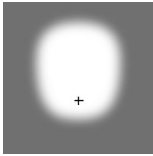
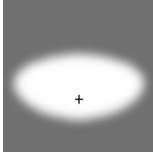
15 W

58 W

29 W

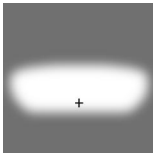
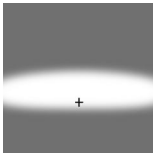
0 W

Configurations

Light distribution	Part ID	Light source	Rated lumens	Rated input power	CRI	Weight (kg)
asymmetric, forward throw [A60] 	108-0929	LED-36/36W / 350 mA - 4000 K	5349.3	39 W	80	8.20
	108-0932	LED-42/42W / 350 mA - 4000 K	6240.9	46 W	80	8.20
	108-0941	LED-36/72W / 700 mA - 4000 K	9218.5	79 W	80	8.20
	108-0944	LED-42/84W / 700 mA - 4000 K	10754.9	96 W	80	8.20
	108-1061	LED-36/36W / 350 mA - 3000 K	4877.3	39 W	80	8.20
	108-1063	LED-36/72W / 700 mA - 3000 K	8623.7	79 W	80	8.20
	108-1065	LED-42/42W / 350 mA - 3000 K	5690.2	46 W	80	8.20
	108-1067	LED-42/84W / 700 mA - 3000 K	10061	96 W	80	8.20
	108-1859	LED-36/108W / 1050 mA - 4000 K	13352.6	119 W	80	8.20
	108-1865	LED-36/108W / 1050 mA - 3000 K	12759.2	119 W	80	8.20
	108-2088	LED-42/126W / 1050 mA - 3000 K	14885.7	136 W	80	8.20
	108-2089	LED-42/126W / 1050 mA - 4000 K	15578.1	136 W	80	8.20
	108-2384	LED-36/36W / 350 mA - 2700 K	4562.6	39 W	80	8.20
	108-2385	LED-36/72W / 700 mA - 2700 K	8029	79 W	80	8.20
	108-2386	LED-36/108W / 1050 mA - 2700 K	12165.7	119 W	80	8.20
	108-2387	LED-42/42W / 350 mA - 2700 K	5323.1	46 W	80	8.20
	108-2388	LED-42/84W / 700 mA - 2700 K	9367.1	96 W	80	8.20
	108-2389	LED-42/126W / 1050 mA - 2700 K	14193.4	136 W	80	8.20
	asymmetric, side throw [S60] 	108-0846	LED-36/36W / 350 mA - 3000 K	5237.7	39 W	80
108-0850		LED-42/42W / 350 mA - 3000 K	6110.7	46 W	80	8.20
108-0877		LED-36/36W / 350 mA - 4000 K	5744.6	39 W	80	8.20
108-0879		LED-42/42W / 350 mA - 4000 K	6702	46 W	80	8.20
108-0907		LED-36/72W / 700 mA - 4000 K	10051.6	79 W	80	8.20
108-0908		LED-36/72W / 700 mA - 3000 K	9403.1	79 W	80	8.20
108-0913		LED-42/84W / 700 mA - 4000 K	11726.8	96 W	80	8.20
108-0914		LED-42/84W / 700 mA - 3000 K	10970.2	96 W	80	8.20
108-1857		LED-36/108W / 1050 mA - 4000 K	14442.3	119 W	80	8.20
108-1863		LED-36/108W / 1050 mA - 3000 K	13800.4	119 W	80	8.20
108-2092		LED-42/126W / 1050 mA - 3000 K	16100.5	136 W	80	8.20
108-2093		LED-42/126W / 1050 mA - 4000 K	16849.3	136 W	80	8.20
108-2352		LED-36/36W / 350 mA - 2700 K	4899.8	39 W	80	8.20
108-2353		LED-36/72W / 700 mA - 2700 K	8754.6	79 W	80	8.20
108-2354		LED-36/108W / 1050 mA - 2700 K	13158.5	119 W	80	8.20
108-2355		LED-42/42W / 350 mA - 2700 K	5716.4	46 W	80	8.20
108-2356		LED-42/84W / 700 mA - 2700 K	10213.7	96 W	80	8.20

VFL540 LED

Pole mounted

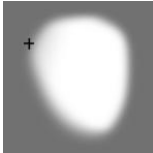
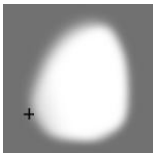
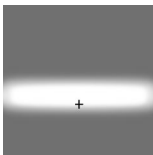
Light distribution	Part ID	Light source	Rated lumens	Rated input power	CRI	Weight (kg)
asymmetric, side throw [S65] 	108-2357	LED-42/126W / 1050 mA - 2700 K	15351.6	136 W	80	8.20
	108-0969	LED-36/36W / 350 mA - 4000 K	5754.4	39 W	80	8.20
	108-0970	LED-36/72W / 700 mA - 4000 K	10145.6	79 W	80	8.20
	108-0971	LED-42/42W / 350 mA - 4000 K	6713.4	46 W	80	8.20
	108-0972	LED-42/84W / 700 mA - 4000 K	11836.5	96 W	80	8.20
	108-1085	LED-36/36W / 350 mA - 3000 K	5246.6	39 W	80	8.20
	108-1087	LED-36/72W / 700 mA - 3000 K	9491	79 W	80	8.20
	108-1089	LED-42/42W / 350 mA - 3000 K	6121.1	46 W	80	8.20
	108-1091	LED-42/84W / 700 mA - 3000 K	11072.8	96 W	80	8.20
	108-1856	LED-36/108W / 1050 mA - 4000 K	14725	119 W	80	8.20
	108-1862	LED-36/108W / 1050 mA - 3000 K	14070.5	119 W	80	8.20
	108-2094	LED-42/126W / 1050 mA - 3000 K	16415.6	136 W	80	8.20
	108-2095	LED-42/126W / 1050 mA - 4000 K	17179.1	136 W	80	8.20
	108-2360	LED-36/36W / 350 mA - 2700 K	4908.1	39 W	80	8.20
	108-2361	LED-36/72W / 700 mA - 2700 K	8836.5	79 W	80	8.20
	108-2362	LED-36/108W / 1050 mA - 2700 K	13416.1	119 W	80	8.20
	108-2363	LED-42/42W / 350 mA - 2700 K	5726.1	46 W	80	8.20
	108-2364	LED-42/84W / 700 mA - 2700 K	10309.2	96 W	80	8.20
	108-2365	LED-42/126W / 1050 mA - 2700 K	15652.1	136 W	80	8.20
	asymmetric, side throw [S70] 	108-0858	LED-36/36W / 350 mA - 3000 K	5134.5	39 W	80
108-0862		LED-42/42W / 350 mA - 3000 K	5990.2	46 W	80	8.20
108-0883		LED-36/36W / 350 mA - 4000 K	5631.4	39 W	80	8.20
108-0885		LED-42/42W / 350 mA - 4000 K	6569.9	46 W	80	8.20
108-0910		LED-36/72W / 700 mA - 4000 K	9878.6	79 W	80	8.20
108-0911		LED-36/72W / 700 mA - 3000 K	9241.3	79 W	80	8.20
108-0916		LED-42/84W / 700 mA - 4000 K	11525.1	96 W	80	8.20
108-0917		LED-42/84W / 700 mA - 3000 K	10781.5	96 W	80	8.20
108-1861		LED-36/108W / 1050 mA - 3000 K	13585.4	119 W	80	8.20
108-1923		LED-36/108W / 1050 mA - 4000 K	14217.3	119 W	80	8.20
108-2096		LED-42/126W / 1050 mA - 3000 K	15849.6	136 W	80	8.20
108-2097		LED-42/126W / 1050 mA - 4000 K	16586.8	136 W	80	8.20
108-2369		LED-36/36W / 350 mA - 2700 K	4803.2	39 W	80	8.20
108-2370		LED-36/72W / 700 mA - 2700 K	8604	79 W	80	8.20
108-2371		LED-36/108W / 1050 mA - 2700 K	12953.5	119 W	80	8.20
108-2372		LED-42/42W / 350 mA - 2700 K	5603.8	46 W	80	8.20
108-2373		LED-42/84W / 700 mA - 2700 K	10038	96 W	80	8.20

WE-EF LIGHTING (Thailand) Co., Ltd.

57 Moo 5, Kingkaew Rd., Bangplee, 10540 Samutprakarn - Phone: +66 2 738 96 20 - Fax: +66 2 738 96 29

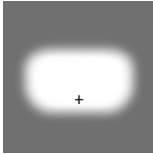
<https://we-ef.com/asia>

Subject to technical changes and errors. - Generated on 23/10/2024

Light distribution	Part ID	Light source	Rated lumens	Rated input power	CRI	Weight (kg)
	108-2374	LED-42/126W / 1050 mA - 2700 K	15112.4	136 W	80	8.20
pedestrian crossing, left-hand traffic [P45L] 	108-1983	LED-36/72W / 700 mA - 3000 K	9127.9	79 W	80	8.20
	108-1984	LED-36/72W / 700 mA - 4000 K	9757.4	79 W	80	8.20
	108-1987	LED-42/84W / 700 mA - 3000 K	10649.2	96 W	80	8.20
	108-1988	LED-42/84W / 700 mA - 4000 K	11383.6	96 W	80	8.20
	108-2528	LED-36/72W / 700 mA - 2700 K	8498.4	79 W	80	8.20
	108-2529	LED-42/84W / 700 mA - 2700 K	9914.8	96 W	80	8.20
pedestrian crossing, right-hand traffic [P45R] 	108-1985	LED-36/72W / 700 mA - 3000 K	9018.9	79 W	80	8.20
	108-1986	LED-36/72W / 700 mA - 4000 K	9640.9	79 W	80	8.20
	108-1989	LED-42/84W / 700 mA - 3000 K	10522	96 W	80	8.20
	108-1990	LED-42/84W / 700 mA - 4000 K	11247.7	96 W	80	8.20
	108-2390	LED-36/72W / 700 mA - 2700 K	8396.9	79 W	80	8.20
	108-2391	LED-42/84W / 700 mA - 2700 K	9796.4	96 W	80	8.20
pedestrian/bicycle lane [P65] 	108-1860	LED-36/108W / 1050 mA - 4000 K	14722.8	119 W	80	8.2
	108-1860-70	LED-36/108W / 1050 mA - 4000 K	16685.9	119 W	70	8.2
	108-1866	LED-36/108W / 1050 mA - 3000 K	14068.5	119 W	80	8.2
	108-1866-70	LED-36/108W / 1050 mA - 3000 K	16031.5	119 W	70	8.2
	108-2105	LED-42/126W / 1050 mA - 3000 K	16413.2	136 W	80	8.2
	108-2105-70	LED-42/126W / 1050 mA - 3000 K	18703.4	136 W	70	8.2
	108-2106	LED-42/126W / 1050 mA - 4000 K	17176.6	136 W	80	8.2
	108-2106-70	LED-42/126W / 1050 mA - 4000 K	19466.9	136 W	70	8.2
	108-2115	LED-36/36W / 350 mA - 3000 K	5124.9	39 W	80	8.2
	108-2115-70	LED-36/36W / 350 mA - 3000 K	5951.5	39 W	70	8.2
	108-2116	LED-36/72W / 700 mA - 3000 K	9367.2	79 W	80	8.2
	108-2116-70	LED-36/72W / 700 mA - 3000 K	10659.2	79 W	70	8.2
	108-2117	LED-36/36W / 350 mA - 4000 K	5620.9	39 W	80	8.2
	108-2117-70	LED-36/36W / 350 mA - 4000 K	6282.2	39 W	70	8.2
	108-2118	LED-36/72W / 700 mA - 4000 K	10013.2	79 W	80	8.2
	108-2118-70	LED-36/72W / 700 mA - 4000 K	11305.2	79 W	70	8.2
	108-2119	LED-42/42W / 350 mA - 3000 K	5979.1	46 W	80	8.2
	108-2119-70	LED-42/42W / 350 mA - 3000 K	6943.4	46 W	70	8.2
	108-2120	LED-42/84W / 700 mA - 3000 K	10928.4	96 W	80	8.20
	108-2120-70	LED-42/84W / 700 mA - 3000 K	12435.7	96 W	70	8.2
108-2121	LED-42/42W / 350 mA - 4000 K	6557.7	46 W	80	8.2	
108-2121-70	LED-42/42W / 350 mA - 4000 K	7329.2	46 W	70	8.2	
108-2122	LED-42/84W / 700 mA - 4000 K	11682.1	96 W	80	8.2	

VFL540 LED

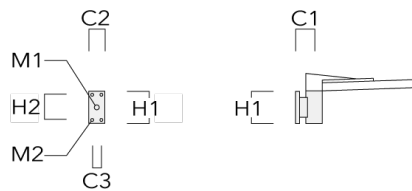
Pole mounted

Light distribution	Part ID	Light source	Rated lumens	Rated input power	CRI	Weight (kg)
	108-2122-70	LED-42/84W / 700 mA - 4000 K	13189.4	96 W	70	8.2
rectangular, side throw [R65] 	108-0975	LED-36/36W / 350 mA - 4000 K	5465.5	39 W	80	8.20
	108-0976	LED-36/72W / 700 mA - 4000 K	9443.5	79 W	80	8.20
	108-0977	LED-42/42W / 350 mA - 4000 K	6376.4	46 W	80	8.20
	108-0978	LED-42/84W / 700 mA - 4000 K	11017.4	96 W	80	8.20
	108-1073	LED-36/36W / 350 mA - 3000 K	4983.3	39 W	80	8.20
	108-1075	LED-36/72W / 700 mA - 3000 K	8834.2	79 W	80	8.20
	108-1077	LED-42/42W / 350 mA - 3000 K	5813.8	46 W	80	8.20
	108-1079	LED-42/84W / 700 mA - 3000 K	10306.6	96 W	80	8.20
	108-1858	LED-36/108W / 1050 mA - 4000 K	13656.7	119 W	80	8.20
	108-1864	LED-36/108W / 1050 mA - 3000 K	13049.8	119 W	80	8.20
	108-2090	LED-42/126W / 1050 mA - 3000 K	15224.7	136 W	80	8.20
	108-2091	LED-42/126W / 1050 mA - 4000 K	15932.8	136 W	80	8.20
	108-2376	LED-36/36W / 350 mA - 2700 K	4661.8	39 W	80	8.20
	108-2377	LED-36/72W / 700 mA - 2700 K	8225	79 W	80	8.20
	108-2378	LED-36/108W / 1050 mA - 2700 K	12442.8	119 W	80	8.20
	108-2379	LED-42/42W / 350 mA - 2700 K	5438.7	46 W	80	8.20
	108-2380	LED-42/84W / 700 mA - 2700 K	9595.8	96 W	80	8.20
108-2381	LED-42/126W / 1050 mA - 2700 K	14516.6	136 W	80	8.20	

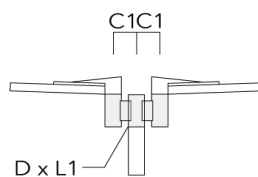
Mounting Accessories

Wall and pole brackets RV

Description	Part ID	Additional information	C1	C2	C3	D1	D × L1	H1	H2	M1	M2	Weight (kg)	C	D	H
RV0 Wall bracket	108-0979-AP	RV0 Wall bracket	108	100	45			200	160	40	12	2.80	108		



RV2-76 Pole bracket, double	108-0980		147				76 x 100					8.10	147	76	200
-----------------------------	----------	--	-----	--	--	--	----------	--	--	--	--	------	-----	----	-----



VFL540 LED

Pole mounted

Description	Part ID	Additional information	C1	C2	C3	D1	D × L1	H1	H2	M1	M2	Weight (kg)	C	D	H
RV2-60 Pole bracket, double	108-0981	147					60 x 100					8.50	147	60	200



RV5 Pole bracket	108-0982	108				76-240						2.30	106	200
------------------	----------	-----	--	--	--	--------	--	--	--	--	--	------	-----	-----



AKV

WE-EF LIGHTING (Thailand) Co., Ltd.

57 Moo 5, Kingkaew Rd., Bangplee, 10540 Samutprakarn - Phone: +66 2 738 96 20 - Fax: +66 2 738 96 29

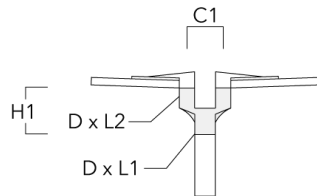
<https://we-ef.com/asia>

Subject to technical changes and errors. - Generated on 23/10/2024

VFL540 LED

Pole mounted

Description	Part ID	C1	D × L1	D × L2	H1	Weight (kg)
AKV2-76	300-0053	180	76x100	76x80	235	1.50



VFL540 LED

Pole mounted

we-ef

Control

R2C Ready to Connect

Description	Part ID
R2C Ready to Connect (top)	430-0019
R2C Ready to Connect (below)	430-0027
R2C Ready to Connect (top and below)	430-0032

WE-EF LIGHTING (Thailand) Co., Ltd.

57 Moo 5, Kingkaew Rd., Bangplee, 10540 Samutprakarn - Phone: +66 2 738 96 20 - Fax: +66 2 738 96 29

<https://we-ef.com/asia>

Subject to technical changes and errors. - Generated on 23/10/2024

VFL540 LED

Pole mounted

WE-EF LIGHTING (Thailand) Co., Ltd.

57 Moo 5, Kingkaew Rd., Bangplee, 10540 Samutprakarn

Phone: +66 2 738 96 20

Fax: +66 2 738 96 29

<https://we-ef.com/asia>

Subject to technical changes and errors.

Generated on 23/10/2024