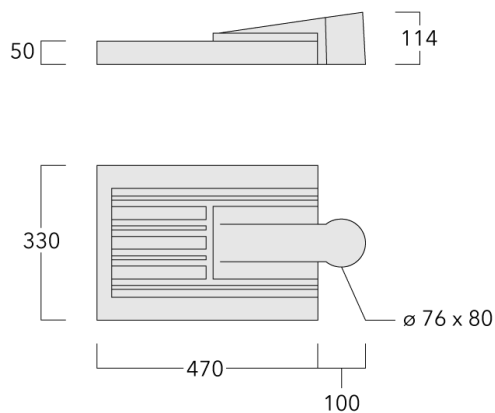


VFL530 LED

Pole mounted

we-ef



Description

IP66, Class I or Class II. IK08. Marine-grade die-cast aluminium alloy. 5CE superior corrosion protection + primer including PCS hardware. Silicone CCG® Controlled Compression Gasket. UV stabilised acrylic panel in RFC® technology. Integrated heat sinks. Easy removal and replacement of LED board. DALI. CAD optimised OLC® PMMA lens for superior illumination and glare control. The luminaire is factory-sealed and does not need to be opened during the installation.

PC Amber and 2200 K available on request (to be specified at time of ordering).

Max drive current:

PC Amber - 700 mA

2200 K - 1050 mA (CRI70 only)

Spigot D: 76 x 80 mm (optional 60 x 80 mm).




WE-EF LIGHTING Pty Ltd

6/13 Downard Street, 3195 Braeside, Victoria - Phone: +61 3 8587 0444 - Fax: +61 3 8587 0499

info.australia@we-ef.com - <https://we-ef.com/aus>

Subject to technical changes and errors. - Generated on 23/11/2024

Specifications**Material description**

Body	Marine-grade, die-cast aluminium alloy
Lens	UV stabilised acrylic panel in RFC™ Reflection Free Contour technology
Colours	 RAL9004 Signal black  RAL9006 White aluminium  RAL9007 Grey aluminium
Gasket	Silicone CCG® Controlled Compression Gasket
Fasteners	PCS Polymer Coated Stainless Steel Hardware (unpainted)
Ingress protection	IP66
Impact resistance	IK08
Corrosion resistance	5CE+Primer
Windage	0.163 m ²

Electrical description

Power supply	230V / 50 Hz
Driver / Ballast	Integral EC electronic converter. DALI
Power factor	> 0.9
Surge protection	In-pole surge protection SP10 device supplied. Please refer to WE-EF installation instructions for details. Use suffix +A for Integral surge protection.

Additional information

Lifetime	Ta=40° L90B10 > 90000h
Warranty	The product is supplied with 10-year warranty. Please refer to the LED Warranty Statement located on www.we-ef.com for further details.

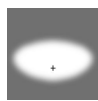
VFL530 LED

Pole mounted

we-ef

Options

Light distribution



asymmetric, side throw [S60]



asymmetric, side throw [S70]



asymmetric, forward throw [A60]



asymmetric, side throw [S65]



rectangular, side throw [R65]



pedestrian/bicycle lane [P65]



pedestrian crossing, left-hand traffic [P45L]



pedestrian crossing, right-hand traffic [P45R]

Colour temperature



3000 K



4000 K



2700 K

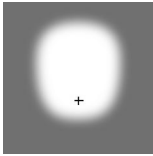
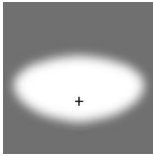
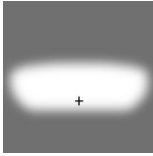
Nominal Watt

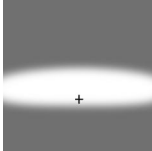
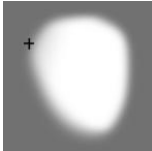

15 W

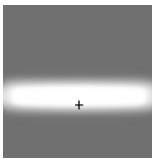
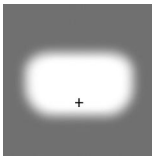
29 W

58 W

Configurations

Light distribution	Part ID	Light source	Rated lumens	Rated input power	CRI	Weight (kg)
asymmetric, forward throw [A60] 	108-1129	LED-12/12W / 350 mA - 3000 K	1626.1	13.9 W	80	6.40
	108-1130	LED-12/12W / 350 mA - 4000 K	1783.5	13.9 W	80	6.40
	108-1144	LED-12/24W / 700 mA - 3000 K	2887.4	27 W	80	6.40
	108-1145	LED-12/24W / 700 mA - 4000 K	3086.5	27 W	80	6.40
	108-1159	LED-24/24W / 350 mA - 3000 K	3252.2	26.5 W	80	6.60
	108-1160	LED-24/24W / 350 mA - 4000 K	3566.9	26.5 W	80	6.60
	108-1174	LED-24/48W / 700 mA - 3000 K	5774.8	54 W	80	6.60
	108-1175	LED-24/48W / 700 mA - 4000 K	6173	54 W	80	6.60
	108-2040	LED-24/72W / 1050 mA - 3000 K	8506.1	81 W	80	6.60
	108-2041	LED-24/72W / 1050 mA - 4000 K	8901.8	81 W	80	6.40
	108-2331	LED-12/12W / 350 mA - 2700 K	1521.2	13.9 W	80	6.40
	108-2332	LED-12/24W / 700 mA - 2700 K	2688.3	27 W	80	6.40
	108-2333	LED-24/24W / 350 mA - 2700 K	3042.4	26.5 W	80	6.60
	108-2334	LED-24/48W / 700 mA - 2700 K	5376.5	54 W	80	6.60
	108-2348	LED-24/72W / 1050 mA - 2700 K	8110.5	81 W	80	6.60
asymmetric, side throw [S60] 	108-1123	LED-12/12W / 350 mA - 3000 K	1725.2	13.9 W	80	6.40
	108-1124	LED-12/12W / 350 mA - 4000 K	1892.1	13.9 W	80	6.40
	108-1138	LED-12/24W / 700 mA - 3000 K	3120.9	27 W	80	6.40
	108-1139	LED-12/24W / 700 mA - 4000 K	3336.1	27 W	80	6.40
	108-1153	LED-24/24W / 350 mA - 3000 K	3450.3	26.5 W	80	6.60
	108-1154	LED-24/24W / 350 mA - 4000 K	3784.2	26.5 W	80	6.60
	108-1168	LED-24/48W / 700 mA - 3000 K	6241.8	54 W	80	6.60
	108-1169	LED-24/48W / 700 mA - 4000 K	6672.2	54 W	80	6.60
	108-2046	LED-24/72W / 1050 mA - 3000 K	9200.3	81 W	80	6.60
	108-2047	LED-24/72W / 1050 mA - 4000 K	9628.2	81 W	80	6.60
	108-2317	LED-12/12W / 350 mA - 2700 K	1613.9	13.9 W	80	6.40
	108-2318	LED-12/24W / 700 mA - 2700 K	3005.1	27 W	80	6.40
	108-2319	LED-24/24W / 350 mA - 2700 K	3227.7	26.5 W	80	6.60
	108-2320	LED-24/48W / 700 mA - 2700 K	5811.3	54 W	80	6.60
	108-2344	LED-24/72W / 1050 mA - 2700 K	8772.3	81 W	80	6.60
asymmetric, side throw [S65] 	108-1132	LED-12/12W / 350 mA - 3000 K	1749.4	13.9 W	80	6.40
	108-1133	LED-12/12W / 350 mA - 4000 K	1918.7	13.9 W	80	6.40
	108-1147	LED-12/24W / 700 mA - 3000 K	3156	27 W	80	6.40
	108-1148	LED-12/24W / 700 mA - 4000 K	3373.6	27 W	80	6.40
	108-1162	LED-24/24W / 350 mA - 3000 K	3498.8	26.5 W	80	6.60

Light distribution	Part ID	Light source	Rated lumens	Rated input power	CRI	Weight (kg)
	108-1163	LED-24/24W / 350 mA - 4000 K	3837.4	26.5 W	80	6.60
	108-1177	LED-24/48W / 700 mA - 3000 K	6312	54 W	80	6.60
	108-1178	LED-24/48W / 700 mA - 4000 K	6747.3	54 W	80	6.60
	108-2048	LED-24/72W / 1050 mA - 3000 K	9380.3	81 W	80	6.60
	108-2049	LED-24/72W / 1050 mA - 4000 K	9816.6	81 W	80	6.60
	108-2321	LED-12/12W / 350 mA - 2700 K	1636.5	13.9 W	80	6.40
	108-2322	LED-12/24W / 700 mA - 2700 K	3047.3	27 W	80	6.40
	108-2323	LED-24/24W / 350 mA - 2700 K	3273.1	26.5 W	80	6.60
	108-2324	LED-24/48W / 700 mA - 2700 K	5876.7	54 W	80	6.60
	108-2345	LED-24/72W / 1050 mA - 2700 K	8944.1	81 W	80	6.60
asymmetric, side throw [S70]	108-1126	LED-12/12W / 350 mA - 3000 K	1720.2	13.9 W	80	6.40
	108-1127	LED-12/12W / 350 mA - 4000 K	1886.7	13.9 W	80	6.40
	108-1141	LED-12/24W / 700 mA - 3000 K	3090.4	27 W	80	6.40
	108-1142	LED-12/24W / 700 mA - 4000 K	3303.5	27 W	80	6.40
	108-1156	LED-24/24W / 350 mA - 3000 K	3440.4	26.5 W	80	6.60
	108-1157	LED-24/24W / 350 mA - 4000 K	3773.3	26.5 W	80	6.60
	108-1171	LED-24/48W / 700 mA - 3000 K	6180.8	54 W	80	6.60
	108-1172	LED-24/48W / 700 mA - 4000 K	6607.1	54 W	80	6.60
	108-1872	LED-24/48W / 700 mA - 2700 K	5754.6	54 W	80	6.60
	108-2050	LED-24/72W / 1050 mA - 3000 K	9056.9	81 W	80	6.60
	108-2051	LED-24/72W / 1050 mA - 4000 K	9478.2	81 W	80	6.60
	108-2325	LED-12/12W / 350 mA - 2700 K	1609.2	13.9 W	80	6.40
	108-2326	LED-12/24W / 700 mA - 2700 K	2877.3	27 W	80	6.40
	108-2327	LED-24/24W / 350 mA - 2700 K	3218.4	26.5 W	80	6.60
	108-2346	LED-24/72W / 1050 mA - 2700 K	8635.7	81 W	80	6.60
pedestrian crossing, left-hand traffic [P45L]	108-2807	LED-24/72W / 1050 mA - 2700 K	8603.3	81 W	80	6.60
	108-2808	LED-24/72W / 1050 mA - 3000 K	9023	81 W	80	6.60
	108-2809	LED-24/72W / 1050 mA - 4000 K	9442.7	81 W	80	6.60
pedestrian crossing, right-hand traffic [P45R]	108-2810	LED-24/72W / 1050 mA - 2700 K	8500.5	81 W	80	6.60
	108-2811	LED-24/72W / 1050 mA - 3000 K	8915.2	81 W	80	6.60
	108-2812	LED-24/72W / 1050 mA - 4000 K	9329.9	81 W	80	6.60

Light distribution	Part ID	Light source	Rated lumens	Rated input power	CRI	Weight (kg)
pedestrian/bicycle lane [P65] 	108-1552	LED-12/12W / 350 mA - 3000 K	1708.3	13.9 W	80	6.40
	108-1553	LED-12/12W / 350 mA - 4000 K	1873.6	13.9 W	80	6.40
	108-1554	LED-12/24W / 700 mA - 3000 K	3122.4	27 W	80	6.40
	108-1555	LED-12/24W / 700 mA - 4000 K	3337.7	27 W	80	6.40
	108-1556	LED-24/24W / 350 mA - 3000 K	3416.6	26.5 W	80	6.60
	108-1557	LED-24/24W / 350 mA - 4000 K	3747.2	26.5 W	80	6.60
	108-1558	LED-24/48W / 700 mA - 3000 K	6244.8	54 W	80	6.60
	108-1559	LED-24/48W / 700 mA - 4000 K	6675.5	54 W	80	6.60
	108-2042	LED-24/72W / 1050 mA - 3000 K	9379	81 W	80	6.60
	108-2043	LED-24/72W / 1050 mA - 4000 K	9815.2	81 W	80	6.60
	108-2241	LED-12/24W / 700 mA - 2700 K	2907.1	27 W	80	6.40
	108-2335	LED-12/12W / 350 mA - 2700 K	1598.1	13.9 W	80	6.40
	108-2336	LED-24/24W / 350 mA - 2700 K	3196.2	26.5 W	80	6.60
	108-2337	LED-24/48W / 700 mA - 2700 K	5814.1	54 W	80	6.60
	108-2349	LED-24/72W / 1050 mA - 2700 K	8942.8	81 W	80	6.60
rectangular, side throw [R65] 	108-1135	LED-12/12W / 350 mA - 3000 K	1671.9	13.9 W	80	6.40
	108-1136	LED-12/12W / 350 mA - 4000 K	1833.7	13.9 W	80	6.40
	108-1150	LED-12/24W / 700 mA - 3000 K	2927.2	27 W	80	6.40
	108-1151	LED-12/24W / 700 mA - 4000 K	3129.1	27 W	80	6.40
	108-1165	LED-24/24W / 350 mA - 3000 K	3343.8	26.5 W	80	6.60
	108-1166	LED-24/24W / 350 mA - 4000 K	3667.4	26.5 W	80	6.60
	108-1180	LED-24/48W / 700 mA - 3000 K	5854.5	54 W	80	6.60
	108-1181	LED-24/48W / 700 mA - 4000 K	6258.2	54 W	80	6.60
	108-2044	LED-24/72W / 1050 mA - 3000 K	8699.8	81 W	80	6.60
	108-2045	LED-24/72W / 1050 mA - 4000 K	9104.5	81 W	80	6.40
	108-2240	LED-12/24W / 700 mA - 2700 K	2725.4	27 W	80	6.40
	108-2328	LED-12/12W / 350 mA - 2700 K	1564.1	13.9 W	80	6.40
	108-2329	LED-24/24W / 350 mA - 2700 K	3128.1	26.5 W	80	6.60
	108-2330	LED-24/48W / 700 mA - 2700 K	5450.7	54 W	80	6.60
	108-2347	LED-24/72W / 1050 mA - 2700 K	8295.2	81 W	80	6.60

VFL530 LED

Pole mounted

we-ef

Control

Eco Step Dim® Basic

Description	Part ID
Eco Step Dim® Basic LED	430-0001

Eco Step Dim® Advanced

Description	Part ID
Eco Step Dim® Advanced LED	430-0002

R2C Ready to Connect

Description	Part ID
R2C Ready to Connect (top)	430-0019
R2C Ready to Connect (below)	430-0027
R2C Ready to Connect (top and below)	430-0032

WE-EF LIGHTING Pty Ltd

6/13 Downard Street, 3195 Braeside, Victoria - Phone: +61 3 8587 0444 - Fax: +61 3 8587 0499

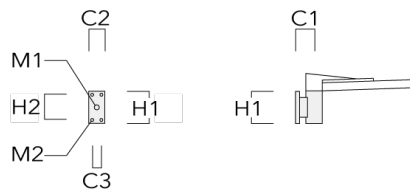
info.australia@we-ef.com - <https://we-ef.com/aus>

Subject to technical changes and errors. - Generated on 23/11/2024

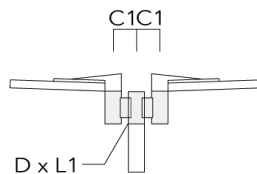
Mounting Accessories

Wall and pole brackets RV

Description	Part ID	Additional information	C1	C2	C3	D1	D × L1	H1	H2	M1	M2	Weight (kg)	C	D	H
RV0 Wall Bracket	108-0979	RV0 Wall bracket	108	100	60			200	160	38	12	2.00	108		



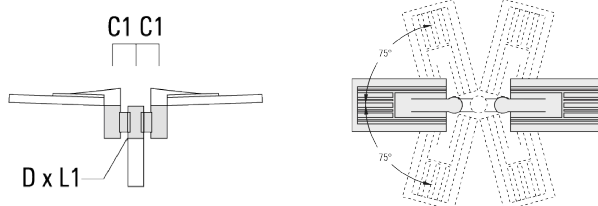
RV2-76 Pole bracket, double	108-0980		147				76 x 100					4.80	147	76	200
-----------------------------	----------	--	-----	--	--	--	----------	--	--	--	--	------	-----	----	-----



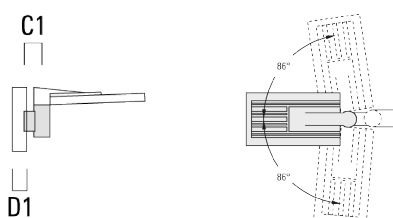
VFL530 LED

Pole mounted

Description	Part ID	Additional information	C1	C2	C3	D1	D × L1	H1	H2	M1	M2	Weight (kg)	C	D	H
RV2-60 Pole bracket, double	108-0981	147					60 x 100					4.80	147	60	200



RV5 Pole bracket	108-0982	108				76-240						1.70	106		200
------------------	----------	-----	--	--	--	--------	--	--	--	--	--	------	-----	--	-----



WE-EF LIGHTING Pty Ltd

6/13 Downard Street, 3195 Braeside, Victoria - Phone: +61 3 8587 0444 - Fax: +61 3 8587 0499

info.australia@we-ef.com - <https://we-ef.com/aus>

Subject to technical changes and errors. - Generated on 23/11/2024

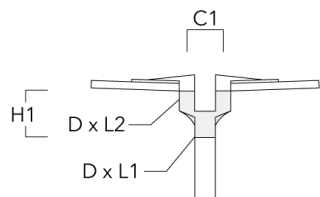
VFL530 LED

Pole mounted

we-ef

Post top fitter AKV

Description	Part ID	C1	D × L1	D × L2	H1	Weight (kg)
AKV2-76	300-0053	180	76x100	76x80	235	1.50



WE-EF LIGHTING Pty Ltd

6/13 Downard Street, 3195 Braeside, Victoria - Phone: +61 3 8587 0444 - Fax: +61 3 8587 0499

info.australia@we-ef.com - <https://we-ef.com/aus>

Subject to technical changes and errors. - Generated on 23/11/2024

Optical Accessories**Light shield**

Description	Part ID	Additional information
LS180-[A60]	003-4018	Glare Shield for backlight spill. Glare Shield factory-installed or available as retrofit kit. Suitable for [A60] lenses. Must be specified at time of ordering.
LS180	003-4019	Glare Shield for backlight spill. Glare Shield factory-installed or available as retrofit kit. Suitable for [S60], [S65], [S70], [R65], [P65] lenses. Must be specified at time of ordering.