

Description

Pole or wall-mounted LED luminaire with integrated heat sinks.

IP66. Class I or Class II. IK08. Marine-grade, die-cast aluminum alloy. 5CE superior corrosion protection including PCS hardware. Silicone CCG® Controlled Compression Gasket. RFC® Reflection Free Contour main lens. CAD-optimized optics for superior illumination and glare control. Integral driver in thermally separated compartment. OLC® One LED Concept. Factory-installed LED circuit board. 0-10V Dimming comes standard with luminaire. Spigot $\varnothing 3" \times 5"$ optional available, must be indicated during order placement. Luminaire is factory-sealed and does not need to be opened during installation.

Recommended mounting height 10-30 ft, depending on lamp type selected.

Specify product with 7 Digit product code - Finish Color. Accessories, such as mounting, optical, and electrical, must be specified separately.

Example: XXX-XXXX-9004 (Black)
+ XXX-XXXX (Accessory 1)





WE-EF LIGHTING USA, LLC

410-D Keystone Drive, 15086 Warrendale, PA 15086 - Phone: +1 724 742 0030

customersupport.usa@we-ef.com - <https://we-ef.com/us>

Subject to technical changes and errors. - Generated on 11/27/2024

Street and Area Lighting**Specifications****Material description**

Body	Marine-grade die-cast aluminium alloy
Lens	PMMA RFC Reflection Contour Lens technology
Colors	 RAL9004 Black  RAL9007 Grey Metallic  RAL9016 White  RAL8019 Dark Bronze
Gasket	Silicone rubber gasket
Fasteners	PCS Polymer Coated Stainless Steel hardware
Ingress protection	IP66
Impact resistance	IK08
Corrosion resistance	5CE
Windage	1.75 ft ²

Electrical description

Power supply	Integral [ECG] electronic driver 120V-277V. 0-10V dimmable, to be specified with order.
Driver / Ballast	Integral EC electronic converter
Power factor	> 0.9
Surge protection	In-line bracket 10kV Surge Protector

Additional information

Lifetime	Ta=25°/40° L90B10 > 90000h
BUG Rating	Please see individual Spec Sheets for classification of Backlight, Uplight and Glare.
Listings	ETL, UL-1598, CSA-C22.2#250.0. Suitable for Wet Locations.

WE-EF LIGHTING USA, LLC

410-D Keystone Drive, 15086 Warrendale, PA 15086 - Phone: +1 724 742 0030

customersupport.usa@we-ef.com - <https://we-ef.com/us>

Subject to technical changes and errors. - Generated on 11/27/2024

VFL530 LED

Street and Area Lighting

Options

Light distribution



[S60] Type III Short



[S70] Type II Short



[A60] Type IV Very Short



[S65] Type III Medium



[R65] Type IV Medium



[P65] Type II Medium



pedestrian crossing, left-hand traffic [P45L]



pedestrian crossing, right-hand traffic [P45R]

Color temperature



3000 K



4000 K



2700 K

Nominal Watt

15 W

29 W

58 W

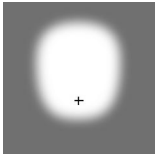
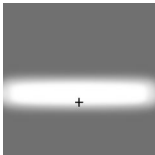
WE-EF LIGHTING USA, LLC

410-D Keystone Drive, 15086 Warrendale, PA 15086 - Phone: +1 724 742 0030

customersupport.usa@we-ef.com - <https://we-ef.com/us>

Subject to technical changes and errors. - Generated on 11/27/2024

Configurations

Light distribution	Part ID	Light source	Rated lumens	Rated input power	CRI	Weight (lb)
[A60] Type IV Very Short 	108-1129	LED-12/12W / 350 mA - 3000 K	1626.1	13.9 W	80	14.10
	108-1130	LED-12/12W / 350 mA - 4000 K	1783.5	13.9 W	80	14.10
	108-1144	LED-12/24W / 700 mA - 3000 K	2887.4	27 W	80	14.10
	108-1145	LED-12/24W / 700 mA - 4000 K	3086.5	27 W	80	14.10
	108-1159	LED-24/24W / 350 mA - 3000 K	3252.2	26.5 W	80	14.60
	108-1160	LED-24/24W / 350 mA - 4000 K	3566.9	26.5 W	80	14.60
	108-1174	LED-24/48W / 700 mA - 3000 K	5774.8	54 W	80	14.60
	108-1175	LED-24/48W / 700 mA - 4000 K	6173	54 W	80	14.60
	108-2040	LED-24/72W / 1050 mA - 3000 K	8506.1	81 W	80	14.60
	108-2041	LED-24/72W / 1050 mA - 4000 K	8901.8	81 W	80	14.10
	108-2331	LED-12/12W / 350 mA - 2700 K	1521.2	13.9 W	80	14.10
	108-2332	LED-12/24W / 700 mA - 2700 K	2688.3	27 W	80	14.10
	108-2333	LED-24/24W / 350 mA - 2700 K	3042.4	26.5 W	80	14.60
	108-2334	LED-24/48W / 700 mA - 2700 K	5376.5	54 W	80	14.60
	108-2348	LED-24/72W / 1050 mA - 2700 K	8110.5	81 W	80	14.60
[P65] Type II Medium 	108-1552	LED-12/12W / 350 mA - 3000 K	1708.3	13.9 W	80	14.10
	108-1553	LED-12/12W / 350 mA - 4000 K	1873.6	13.9 W	80	14.10
	108-1554	LED-12/24W / 700 mA - 3000 K	3122.4	27 W	80	14.10
	108-1555	LED-12/24W / 700 mA - 4000 K	3337.7	27 W	80	14.10
	108-1556	LED-24/24W / 350 mA - 3000 K	3416.6	26.5 W	80	14.60
	108-1557	LED-24/24W / 350 mA - 4000 K	3747.2	26.5 W	80	14.60
	108-1558	LED-24/48W / 700 mA - 3000 K	6244.8	54 W	80	14.60
	108-1559	LED-24/48W / 700 mA - 4000 K	6675.5	54 W	80	14.60
	108-2042	LED-24/72W / 1050 mA - 3000 K	9379	81 W	80	14.60
	108-2043	LED-24/72W / 1050 mA - 4000 K	9815.2	81 W	80	14.60
	108-2241	LED-12/24W / 700 mA - 2700 K	2907.1	27 W	80	14.10
	108-2335	LED-12/12W / 350 mA - 2700 K	1598.1	13.9 W	80	14.10
	108-2336	LED-24/24W / 350 mA - 2700 K	3196.2	26.5 W	80	14.60
	108-2337	LED-24/48W / 700 mA - 2700 K	5814.1	54 W	80	14.60
	108-2349	LED-24/72W / 1050 mA - 2700 K	8942.8	81 W	80	14.60
[R65] Type IV Medium	108-1135	LED-12/12W / 350 mA - 3000 K	1671.9	13.9 W	80	14.10
	108-1136	LED-12/12W / 350 mA - 4000 K	1833.7	13.9 W	80	14.10

WE-EF LIGHTING USA, LLC

410-D Keystone Drive, 15086 Warrendale, PA 15086 - Phone: +1 724 742 0030

customersupport.usa@we-ef.com - <https://we-ef.com/us>

Subject to technical changes and errors. - Generated on 11/27/2024

Light distribution	Part ID	Light source	Rated lumens	Rated input power	CRI	Weight (lb)
	108-1150	LED-12/24W / 700 mA - 3000 K	2927.2	27 W	80	14.10
	108-1151	LED-12/24W / 700 mA - 4000 K	3129.1	27 W	80	14.10
	108-1165	LED-24/24W / 350 mA - 3000 K	3343.8	26.5 W	80	14.60
	108-1166	LED-24/24W / 350 mA - 4000 K	3667.4	26.5 W	80	14.60
	108-1180	LED-24/48W / 700 mA - 3000 K	5854.5	54 W	80	14.60
	108-1181	LED-24/48W / 700 mA - 4000 K	6258.2	54 W	80	14.60
	108-2044	LED-24/72W / 1050 mA - 3000 K	8699.8	81 W	80	14.60
	108-2045	LED-24/72W / 1050 mA - 4000 K	9104.5	81 W	80	14.10
	108-2240	LED-12/24W / 700 mA - 2700 K	2725.4	27 W	80	14.10
	108-2328	LED-12/12W / 350 mA - 2700 K	1564.1	13.9 W	80	14.10
	108-2329	LED-24/24W / 350 mA - 2700 K	3128.1	26.5 W	80	14.60
	108-2330	LED-24/48W / 700 mA - 2700 K	5450.7	54 W	80	14.60
	108-2347	LED-24/72W / 1050 mA - 2700 K	8295.2	81 W	80	14.60
[S60] Type III Short	108-1123	LED-12/12W / 350 mA - 3000 K	1725.2	13.9 W	80	14.10
	108-1124	LED-12/12W / 350 mA - 4000 K	1892.1	13.9 W	80	14.10
	108-1138	LED-12/24W / 700 mA - 3000 K	3120.9	27 W	80	14.10
	108-1139	LED-12/24W / 700 mA - 4000 K	3336.1	27 W	80	14.10
	108-1153	LED-24/24W / 350 mA - 3000 K	3450.3	26.5 W	80	14.60
	108-1154	LED-24/24W / 350 mA - 4000 K	3784.2	26.5 W	80	14.60
	108-1168	LED-24/48W / 700 mA - 3000 K	6241.8	54 W	80	14.60
	108-1169	LED-24/48W / 700 mA - 4000 K	6672.2	54 W	80	14.60
	108-2046	LED-24/72W / 1050 mA - 3000 K	9200.3	81 W	80	14.60
	108-2047	LED-24/72W / 1050 mA - 4000 K	9628.2	81 W	80	14.60
	108-2317	LED-12/12W / 350 mA - 2700 K	1613.9	13.9 W	80	14.10
	108-2318	LED-12/24W / 700 mA - 2700 K	3005.1	27 W	80	14.10
	108-2319	LED-24/24W / 350 mA - 2700 K	3227.7	26.5 W	80	14.60
	108-2320	LED-24/48W / 700 mA - 2700 K	5811.3	54 W	80	14.60
108-2344	LED-24/72W / 1050 mA - 2700 K	8772.3	81 W	80	14.60	
[S65] Type III Medium	108-1132	LED-12/12W / 350 mA - 3000 K	1749.4	13.9 W	80	14.10
	108-1133	LED-12/12W / 350 mA - 4000 K	1918.7	13.9 W	80	14.10
	108-1147	LED-12/24W / 700 mA - 3000 K	3156	27 W	80	14.10
	108-1148	LED-12/24W / 700 mA - 4000 K	3373.6	27 W	80	14.10
	108-1162	LED-24/24W / 350 mA - 3000 K	3498.8	26.5 W	80	14.60

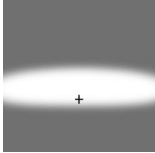
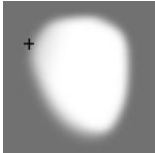
WE-EF LIGHTING USA, LLC

410-D Keystone Drive, 15086 Warrendale, PA 15086 - Phone: +1 724 742 0030

customersupport.usa@we-ef.com - <https://we-ef.com/us>

Subject to technical changes and errors. - Generated on 11/27/2024

Street and Area Lighting

Light distribution	Part ID	Light source	Rated lumens	Rated input power	CRI	Weight (lb)
	108-1163	LED-24/24W / 350 mA - 4000 K	3837.4	26.5 W	80	14.60
	108-1177	LED-24/48W / 700 mA - 3000 K	6312	54 W	80	14.60
	108-1178	LED-24/48W / 700 mA - 4000 K	6747.3	54 W	80	14.60
	108-2048	LED-24/72W / 1050 mA - 3000 K	9380.3	81 W	80	14.60
	108-2049	LED-24/72W / 1050 mA - 4000 K	9816.6	81 W	80	14.60
	108-2321	LED-12/12W / 350 mA - 2700 K	1636.5	13.9 W	80	14.10
	108-2322	LED-12/24W / 700 mA - 2700 K	3047.3	27 W	80	14.10
	108-2323	LED-24/24W / 350 mA - 2700 K	3273.1	26.5 W	80	14.60
	108-2324	LED-24/48W / 700 mA - 2700 K	5876.7	54 W	80	14.60
	108-2345	LED-24/72W / 1050 mA - 2700 K	8944.1	81 W	80	14.60
[S70] Type II Short	108-1126	LED-12/12W / 350 mA - 3000 K	1720.2	13.9 W	80	14.10
	108-1127	LED-12/12W / 350 mA - 4000 K	1886.7	13.9 W	80	14.10
	108-1141	LED-12/24W / 700 mA - 3000 K	3090.4	27 W	80	14.10
	108-1142	LED-12/24W / 700 mA - 4000 K	3303.5	27 W	80	14.10
	108-1156	LED-24/24W / 350 mA - 3000 K	3440.4	26.5 W	80	14.60
	108-1157	LED-24/24W / 350 mA - 4000 K	3773.3	26.5 W	80	14.60
	108-1171	LED-24/48W / 700 mA - 3000 K	6180.8	54 W	80	14.60
	108-1172	LED-24/48W / 700 mA - 4000 K	6607.1	54 W	80	14.60
	108-1872	LED-24/48W / 700 mA - 2700 K	5754.6	54 W	80	14.60
	108-2050	LED-24/72W / 1050 mA - 3000 K	9056.9	81 W	80	14.60
	108-2051	LED-24/72W / 1050 mA - 4000 K	9478.2	81 W	80	14.60
	108-2325	LED-12/12W / 350 mA - 2700 K	1609.2	13.9 W	80	14.10
	108-2326	LED-12/24W / 700 mA - 2700 K	2877.3	27 W	80	14.10
	108-2327	LED-24/24W / 350 mA - 2700 K	3218.4	26.5 W	80	14.60
	108-2346	LED-24/72W / 1050 mA - 2700 K	8635.7	81 W	80	14.60
pedestrian crossing, left-hand traffic	108-2807	LED-24/72W / 1050 mA - 2700 K	8603.3	81 W	80	14.60
[P45L]	108-2808	LED-24/72W / 1050 mA - 3000 K	9023	81 W	80	14.60
	108-2809	LED-24/72W / 1050 mA - 4000 K	9442.7	81 W	80	14.60
pedestrian crossing, right-hand traffic	108-2810	LED-24/72W / 1050 mA - 2700 K	8500.5	81 W	80	14.60
[P45R]	108-2811	LED-24/72W / 1050 mA - 3000 K	8915.2	81 W	80	14.60
	108-2812	LED-24/72W / 1050 mA - 4000 K	9329.9	81 W	80	14.60

WE-EF LIGHTING USA, LLC

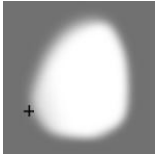
410-D Keystone Drive, 15086 Warrendale, PA 15086 - Phone: +1 724 742 0030

customersupport.usa@we-ef.com - <https://we-ef.com/us>

Subject to technical changes and errors. - Generated on 11/27/2024

VFL530 LED

Street and Area Lighting

Light distribution	Part ID	Light source	Rated lumens	Rated input power	CRI	Weight (lb)
						

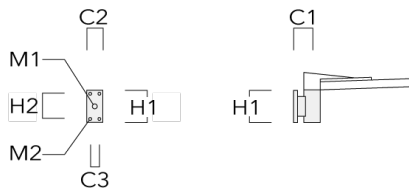
WE-EF LIGHTING USA, LLC

410-D Keystone Drive, 15086 Warrendale, PA 15086 - Phone: +1 724 742 0030
customersupport.usa@we-ef.com - <https://we-ef.com/us>
Subject to technical changes and errors. - Generated on 11/27/2024

Mounting Accessories

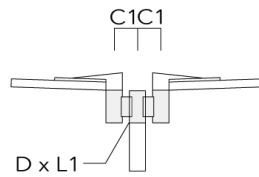
Wall and pole brackets RV

Description	Part ID	Additional information	C1	C2	C3	D1	D × L1	H1	H2	M1	M2	Weight (lb)	C	D	H	
RVO Wall bracket	108-0979	RVO Wall bracket		4.25"	3.94"	2.36"		7.87"	6.3"	1.5"	0.47"	4.41	108			

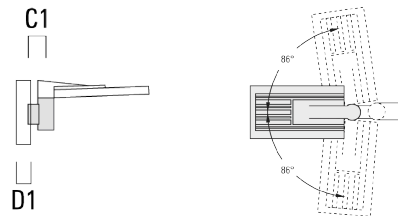


Street and Area Lighting

Description	Part ID	Additional information	C1	C2	C3	D1	D × L1	H1	H2	M1	M2	Weight (lb)	C	D	H
RV2-76 Pole bracket, double	108-0980	5.79					3 x 4					10.58	147	76	200



RV5 Pole bracket	108-0982	4.25"				3.0"-9.5"						3.75 lbs	106		200
------------------	----------	-------	--	--	--	-----------	--	--	--	--	--	----------	-----	--	-----



Optical Accessories**Light shield**

Description	Part ID	Additional information
LS180-[A60]	430-0038	Light shield LS180 to greatly reduce or eliminate light pollution. PA injection moulded component, black matt. Suitable for asymmetric light distribution [A60].
LS180	430-0029	Glare Shield for backlight spill. Glare Shield factory-installed or available as retrofit kit. Suitable for [S60], [S65], [S70], [R65], [P65] lenses. Must be specified at time of ordering.