**Description**

IP66, Class I. IK08. Marine-grade, die-cast aluminium alloy. 5CE superior corrosion protection including PCS hardware. RFC™ Reflection Free Contour main lens. Silicone CCG® Controlled Compression Gasket. Luminaire is factory-sealed and does not need to be opened during installation.

Integral electronic converter with DALI interface. Advanced thermal management protects LEDs while optimising lumens output. Removable LED boards for upgrading. CAD-optimised optics for superior illumination and glare control. OLC® One LED Concept. Optional 2200 K version available. To be specified at time of ordering.

Including 0.5 m cable with a cable connector.

Maximum spacing for streetlighting applications depends on wattage and light distribution: 5.5 to 9 times the mounting height.

Wild-Light options available on request.

# VFL530 LED





Pole mounted

**we-ef**

## Specifications

### Material description

---

Body	Marine-grade, die-cast aluminium alloy
Lens	RFC™ Reflection Free Contour main lens
Colours	 RAL9004 Signal black  RAL9007 Grey aluminium  RAL7016 Anthracite grey  RAL9016 Traffic white
Gasket	Silicone CCG® Controlled Compression Gasket
Fasteners	PCS Polymer Coated Stainless Steel Hardware
Ingress protection	IP66
Impact resistance	IK08
Corrosion resistance	5CE
Windage	0.163 m <sup>2</sup>

---

### Electrical description

---

Power supply	220-240V / 50-60 Hz
Driver / Ballast	Integral electronic converter with DALI interface
Power factor	> 0.9

---

### Additional information

---

Lifetime	Ta=25° L90B10 > 90000h
BUG Rating	Please see individual Spec Sheets for classification of Backlight, Uplight and Glare

---

**WE-EF LIGHTING (Thailand) Co., Ltd.**

57 Moo 5, Kingkaew Rd., Bangplee, 10540 Samutprakarn - Phone: +66 2 738 96 20 - Fax: +66 2 738 96 29

<https://we-ef.com/asia>

Subject to technical changes and errors. - Generated on 24/11/2024

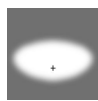
# VFL530 LED

Pole mounted

**we-ef**

## Options

### Light distribution



asymmetric, side throw [S60]



asymmetric, side throw [S70]



asymmetric, forward throw [A60]



asymmetric, side throw [S65]



rectangular, side throw [R65]



pedestrian/bicycle lane [P65]



pedestrian crossing, left-hand traffic [P45L]



pedestrian crossing, right-hand traffic [P45R]

### Colour temperature



3000 K



4000 K



2700 K

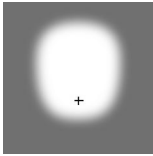
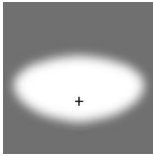
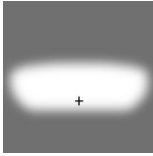
### Nominal Watt

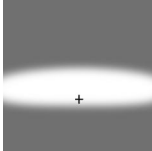
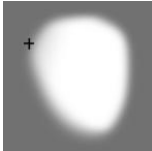

15 W

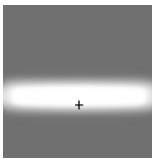
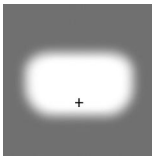
29 W

58 W

## Configurations

Light distribution	Part ID	Light source	Rated lumens	Rated input power	CRI	Weight (kg)
asymmetric, forward throw [A60] 	108-1129	LED-12/12W / 350 mA - 3000 K	1626.1	13.9 W	80	6.40
	108-1130	LED-12/12W / 350 mA - 4000 K	1783.5	13.9 W	80	6.40
	108-1144	LED-12/24W / 700 mA - 3000 K	2887.4	27 W	80	6.40
	108-1145	LED-12/24W / 700 mA - 4000 K	3086.5	27 W	80	6.40
	108-1159	LED-24/24W / 350 mA - 3000 K	3252.2	26.5 W	80	6.60
	108-1160	LED-24/24W / 350 mA - 4000 K	3566.9	26.5 W	80	6.60
	108-1174	LED-24/48W / 700 mA - 3000 K	5774.8	54 W	80	6.60
	108-1175	LED-24/48W / 700 mA - 4000 K	6173	54 W	80	6.60
	108-2040	LED-24/72W / 1050 mA - 3000 K	8506.1	81 W	80	6.60
	108-2041	LED-24/72W / 1050 mA - 4000 K	8901.8	81 W	80	6.40
	108-2331	LED-12/12W / 350 mA - 2700 K	1521.2	13.9 W	80	6.40
	108-2332	LED-12/24W / 700 mA - 2700 K	2688.3	27 W	80	6.40
	108-2333	LED-24/24W / 350 mA - 2700 K	3042.4	26.5 W	80	6.60
	108-2334	LED-24/48W / 700 mA - 2700 K	5376.5	54 W	80	6.60
	108-2348	LED-24/72W / 1050 mA - 2700 K	8110.5	81 W	80	6.60
asymmetric, side throw [S60] 	108-1123	LED-12/12W / 350 mA - 3000 K	1725.2	13.9 W	80	6.40
	108-1124	LED-12/12W / 350 mA - 4000 K	1892.1	13.9 W	80	6.40
	108-1138	LED-12/24W / 700 mA - 3000 K	3120.9	27 W	80	6.40
	108-1139	LED-12/24W / 700 mA - 4000 K	3336.1	27 W	80	6.40
	108-1153	LED-24/24W / 350 mA - 3000 K	3450.3	26.5 W	80	6.60
	108-1154	LED-24/24W / 350 mA - 4000 K	3784.2	26.5 W	80	6.60
	108-1168	LED-24/48W / 700 mA - 3000 K	6241.8	54 W	80	6.60
	108-1169	LED-24/48W / 700 mA - 4000 K	6672.2	54 W	80	6.60
	108-2046	LED-24/72W / 1050 mA - 3000 K	9200.3	81 W	80	6.60
	108-2047	LED-24/72W / 1050 mA - 4000 K	9628.2	81 W	80	6.60
	108-2317	LED-12/12W / 350 mA - 2700 K	1613.9	13.9 W	80	6.40
	108-2318	LED-12/24W / 700 mA - 2700 K	3005.1	27 W	80	6.40
	108-2319	LED-24/24W / 350 mA - 2700 K	3227.7	26.5 W	80	6.60
	108-2320	LED-24/48W / 700 mA - 2700 K	5811.3	54 W	80	6.60
	108-2344	LED-24/72W / 1050 mA - 2700 K	8772.3	81 W	80	6.60
asymmetric, side throw [S65] 	108-1132	LED-12/12W / 350 mA - 3000 K	1749.4	13.9 W	80	6.40
	108-1133	LED-12/12W / 350 mA - 4000 K	1918.7	13.9 W	80	6.40
	108-1147	LED-12/24W / 700 mA - 3000 K	3156	27 W	80	6.40
	108-1148	LED-12/24W / 700 mA - 4000 K	3373.6	27 W	80	6.40
	108-1162	LED-24/24W / 350 mA - 3000 K	3498.8	26.5 W	80	6.60

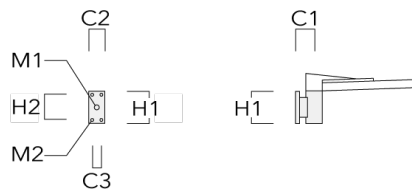
Light distribution	Part ID	Light source	Rated lumens	Rated input power	CRI	Weight (kg)
	108-1163	LED-24/24W / 350 mA - 4000 K	3837.4	26.5 W	80	6.60
	108-1177	LED-24/48W / 700 mA - 3000 K	6312	54 W	80	6.60
	108-1178	LED-24/48W / 700 mA - 4000 K	6747.3	54 W	80	6.60
	108-2048	LED-24/72W / 1050 mA - 3000 K	9380.3	81 W	80	6.60
	108-2049	LED-24/72W / 1050 mA - 4000 K	9816.6	81 W	80	6.60
	108-2321	LED-12/12W / 350 mA - 2700 K	1636.5	13.9 W	80	6.40
	108-2322	LED-12/24W / 700 mA - 2700 K	3047.3	27 W	80	6.40
	108-2323	LED-24/24W / 350 mA - 2700 K	3273.1	26.5 W	80	6.60
	108-2324	LED-24/48W / 700 mA - 2700 K	5876.7	54 W	80	6.60
	108-2345	LED-24/72W / 1050 mA - 2700 K	8944.1	81 W	80	6.60
asymmetric, side throw [S70]	108-1126	LED-12/12W / 350 mA - 3000 K	1720.2	13.9 W	80	6.40
	108-1127	LED-12/12W / 350 mA - 4000 K	1886.7	13.9 W	80	6.40
	108-1141	LED-12/24W / 700 mA - 3000 K	3090.4	27 W	80	6.40
	108-1142	LED-12/24W / 700 mA - 4000 K	3303.5	27 W	80	6.40
	108-1156	LED-24/24W / 350 mA - 3000 K	3440.4	26.5 W	80	6.60
	108-1157	LED-24/24W / 350 mA - 4000 K	3773.3	26.5 W	80	6.60
	108-1171	LED-24/48W / 700 mA - 3000 K	6180.8	54 W	80	6.60
	108-1172	LED-24/48W / 700 mA - 4000 K	6607.1	54 W	80	6.60
	108-1872	LED-24/48W / 700 mA - 2700 K	5754.6	54 W	80	6.60
	108-2050	LED-24/72W / 1050 mA - 3000 K	9056.9	81 W	80	6.60
	108-2051	LED-24/72W / 1050 mA - 4000 K	9478.2	81 W	80	6.60
	108-2325	LED-12/12W / 350 mA - 2700 K	1609.2	13.9 W	80	6.40
	108-2326	LED-12/24W / 700 mA - 2700 K	2877.3	27 W	80	6.40
	108-2327	LED-24/24W / 350 mA - 2700 K	3218.4	26.5 W	80	6.60
	108-2346	LED-24/72W / 1050 mA - 2700 K	8635.7	81 W	80	6.60
pedestrian crossing, left-hand traffic [P45L]	108-2807	LED-24/72W / 1050 mA - 2700 K	8603.3	81 W	80	6.60
	108-2808	LED-24/72W / 1050 mA - 3000 K	9023	81 W	80	6.60
	108-2809	LED-24/72W / 1050 mA - 4000 K	9442.7	81 W	80	6.60
pedestrian crossing, right-hand traffic [P45R]	108-2810	LED-24/72W / 1050 mA - 2700 K	8500.5	81 W	80	6.60
	108-2811	LED-24/72W / 1050 mA - 3000 K	8915.2	81 W	80	6.60
	108-2812	LED-24/72W / 1050 mA - 4000 K	9329.9	81 W	80	6.60

Light distribution	Part ID	Light source	Rated lumens	Rated input power	CRI	Weight (kg)
pedestrian/bicycle lane [P65] 	108-1552	LED-12/12W / 350 mA - 3000 K	1708.3	13.9 W	80	6.40
	108-1553	LED-12/12W / 350 mA - 4000 K	1873.6	13.9 W	80	6.40
	108-1554	LED-12/24W / 700 mA - 3000 K	3122.4	27 W	80	6.40
	108-1555	LED-12/24W / 700 mA - 4000 K	3337.7	27 W	80	6.40
	108-1556	LED-24/24W / 350 mA - 3000 K	3416.6	26.5 W	80	6.60
	108-1557	LED-24/24W / 350 mA - 4000 K	3747.2	26.5 W	80	6.60
	108-1558	LED-24/48W / 700 mA - 3000 K	6244.8	54 W	80	6.60
	108-1559	LED-24/48W / 700 mA - 4000 K	6675.5	54 W	80	6.60
	108-2042	LED-24/72W / 1050 mA - 3000 K	9379	81 W	80	6.60
	108-2043	LED-24/72W / 1050 mA - 4000 K	9815.2	81 W	80	6.60
	108-2241	LED-12/24W / 700 mA - 2700 K	2907.1	27 W	80	6.40
	108-2335	LED-12/12W / 350 mA - 2700 K	1598.1	13.9 W	80	6.40
	108-2336	LED-24/24W / 350 mA - 2700 K	3196.2	26.5 W	80	6.60
	108-2337	LED-24/48W / 700 mA - 2700 K	5814.1	54 W	80	6.60
	108-2349	LED-24/72W / 1050 mA - 2700 K	8942.8	81 W	80	6.60
rectangular, side throw [R65] 	108-1135	LED-12/12W / 350 mA - 3000 K	1671.9	13.9 W	80	6.40
	108-1136	LED-12/12W / 350 mA - 4000 K	1833.7	13.9 W	80	6.40
	108-1150	LED-12/24W / 700 mA - 3000 K	2927.2	27 W	80	6.40
	108-1151	LED-12/24W / 700 mA - 4000 K	3129.1	27 W	80	6.40
	108-1165	LED-24/24W / 350 mA - 3000 K	3343.8	26.5 W	80	6.60
	108-1166	LED-24/24W / 350 mA - 4000 K	3667.4	26.5 W	80	6.60
	108-1180	LED-24/48W / 700 mA - 3000 K	5854.5	54 W	80	6.60
	108-1181	LED-24/48W / 700 mA - 4000 K	6258.2	54 W	80	6.60
	108-2044	LED-24/72W / 1050 mA - 3000 K	8699.8	81 W	80	6.60
	108-2045	LED-24/72W / 1050 mA - 4000 K	9104.5	81 W	80	6.40
	108-2240	LED-12/24W / 700 mA - 2700 K	2725.4	27 W	80	6.40
	108-2328	LED-12/12W / 350 mA - 2700 K	1564.1	13.9 W	80	6.40
	108-2329	LED-24/24W / 350 mA - 2700 K	3128.1	26.5 W	80	6.60
	108-2330	LED-24/48W / 700 mA - 2700 K	5450.7	54 W	80	6.60
	108-2347	LED-24/72W / 1050 mA - 2700 K	8295.2	81 W	80	6.60

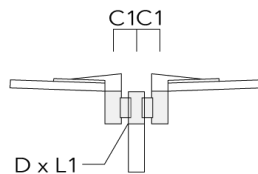
**Mounting Accessories**

**Wall and pole brackets RV**

Description	Part ID	Additional information	C1	C2	C3	D1	D × L1	H1	H2	M1	M2	Weight (kg)	C	D	H
RV0 Wall bracket	108-0979-AP	RV0 Wall bracket	108	100	45			200	160	40	12	2.80	108		

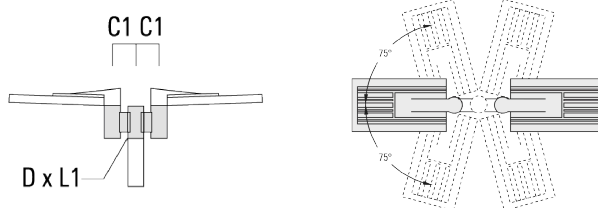


RV2-76 Pole bracket, double	108-0980		147				76 x 100					8.10	147	76	200
-----------------------------	----------	--	-----	--	--	--	----------	--	--	--	--	------	-----	----	-----

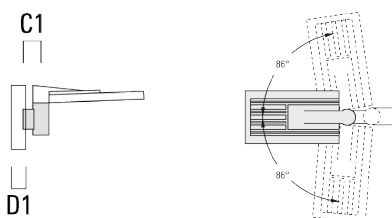


Pole mounted

Description	Part ID	Additional information	C1	C2	C3	D1	D × L1	H1	H2	M1	M2	Weight (kg)	C	D	H
RV2-60 Pole bracket, double	108-0981	147					60 x 100					8.50	147	60	200



RV5 Pole bracket	108-0982	108				76-240						2.30	106	200
------------------	----------	-----	--	--	--	--------	--	--	--	--	--	------	-----	-----





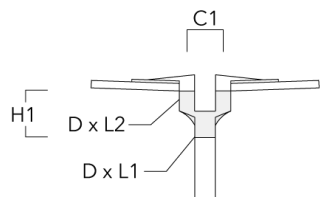
# VFL530 LED

Pole mounted

**we-ef**

## AKV

Description	Part ID	C1	D × L1	D × L2	H1	Weight (kg)
AKV2-76	300-0053	180	76x100	76x80	235	1.50



# VFL530 LED

Pole mounted

**we-ef**

## Control

### R2C Ready to Connect

Description	Part ID
R2C Ready to Connect (top)	430-0019
R2C Ready to Connect (below)	430-0027
R2C Ready to Connect (top and below)	430-0032

**WE-EF LIGHTING (Thailand) Co., Ltd.**

57 Moo 5, Kingkaew Rd., Bangplee, 10540 Samutprakarn - Phone: +66 2 738 96 20 - Fax: +66 2 738 96 29

<https://we-ef.com/asia>

Subject to technical changes and errors. - Generated on 24/11/2024