

OLV330 LED

we-ef

Surface Mounted Wall Luminaires



WE-EF LIGHTING USA, LLC

410-D Keystone Drive, 15086 Warrendale, PA 15086 - Phone: +1 724 742 0030

customersupport.usa@we-ef.com - <https://we-ef.com/us>

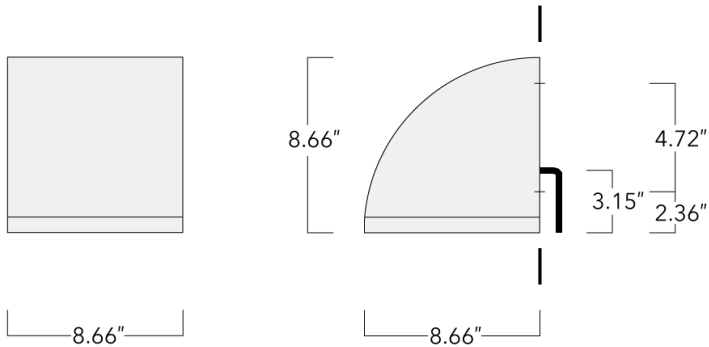
Subject to technical changes and errors. - Generated on 01/19/2026

Surface Mounted Wall Luminaires





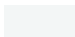

Description

IP65. Surface mounted wallwasher. Suitable for installation over 4" recessed junction box in uplight or downlight position. Optional 2200 K version available. To be specified at time of ordering.



Surface Mounted Wall Luminaires

Specifications**Material description**

Body	Luminaire body and lens frame constructed in die cast aluminum.
Lens	Tempered glass lens.
Colors	 RAL9004 Black  RAL9007 Grey Metallic  RAL9016 White  RAL8019 Dark Bronze
Gasket	Silicone rubber gasket
Fasteners	PCS polymer coated stainless steel
Ingress protection	IP65
Impact resistance	IK07
Corrosion resistance	5CE

Electrical description

Power supply	Integral [ECG] electronic driver 120V-277V. 0-10V dimmable, to be specified with order.
Driver / Ballast	Integral EC electronic converter

Additional information

Lifetime	Ta=25°/40° L90B10 > 90000h
BUG Rating	Please see individual Spec Sheets for classification of Backlight, Uplight and Glare.
Listings	ETL listed. Suitable for wet locations.

Options

Light distribution



symmetric, medium beam [M]



symmetric, very narrow beam, 'sharp cut-off' [VNS]

Color temperature Nominal Watt

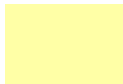


3000 K

15 W

21 W

0 W





4000 K



2700 K

Surface Mounted Wall Luminaires

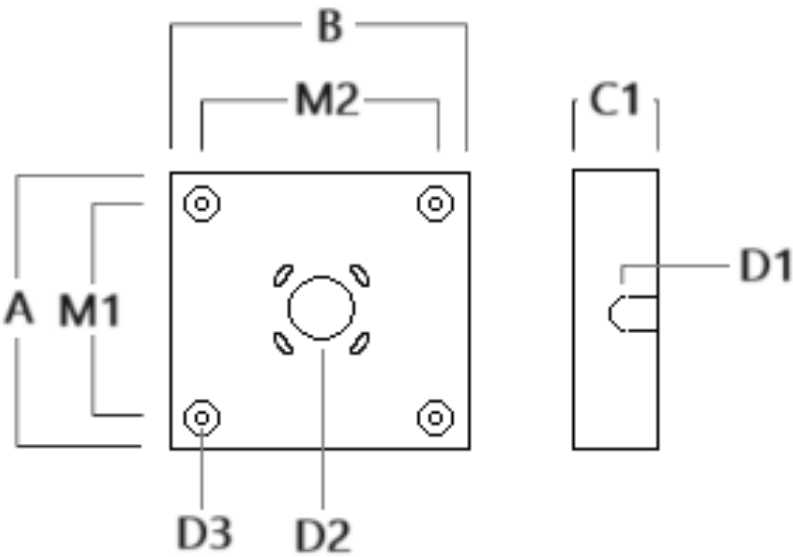
Configurations

Light distribution	Part ID	Light source	Delivered lumens	Rated input power	CRI	Weight (lb)
symmetric, medium beam [M] 	132-0522	LED-12/12W / 350 mA - 3000 K	1602.7	13.9 W	80	14.60
	132-0523	LED-12/12W / 350 mA - 4000 K	1757.8	13.9 W	80	14.60
	132-0532	LED-12/18W / 500 mA - 3000 K	2223.1	21 W	80	14.60
	132-0533	LED-12/18W / 500 mA - 4000 K	2378.2	21 W	80	14.60
	132-0633	LED-12/12W / 350 mA - 2700 K	1499.3	13.9 W	80	14.60
	132-0634	LED-12/18W / 500 mA - 2700 K	2068	21 W	80	14.60
symmetric, very narrow beam, 'sharp cut-off' [VNS] 	132-0524	LED-12/12W / 350 mA - 3000 K	1645.1	13.9 W	80	14.60
	132-0525	LED-12/12W / 350 mA - 4000 K	1804.3	13.9 W	80	14.60
	132-0534	LED-12/18W / 500 mA - 3000 K	2281.9	21 W	80	14.60
	132-0535	LED-12/18W / 500 mA - 4000 K	2441.1	21 W	80	14.60
	132-0635	LED-12/12W / 350 mA - 2700 K	1539	13.9 W	80	14.60
	132-0636	LED-12/18W / 500 mA - 2700 K	2122.7	21 W	80	14.60

Mounting Accessories

Surface Collar

Description	Part ID	A	B	C1	D1	D2	Weight (lb)
OLV33_ Surface Collar	132-6001	8.69	8.63	1.75	ø1	ø2	1.12



Electrical Accessories

Emergency Lighting Package

Description	Part ID	Additional information
OLV33_ LED Emergency Lighting Package	132-6900	Emergency battery backup operating for a minimum of 90 minutes, at full power, when main power is lost.