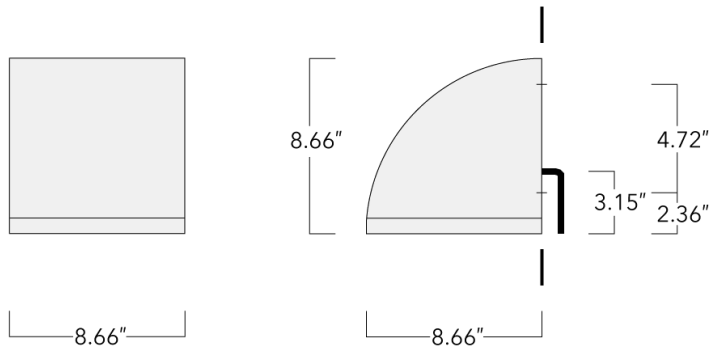


OLV334 LED

Surface Mounted Wall Luminaires



Description

IP65. IK08; IK10 on request with polycarbonate lens. Marine-grade, die-cast aluminum alloy. 5CE superior corrosion protection including PCS hardware. Silicone CCG® Controlled Compression Gasket. Safety glass lens. Two cable entries. CAD-optimized optics for superior illumination and glare control. Integral driver. OLC® One LED Concept. Advanced thermal management protects LEDs while optimizing lumens output.

Luminaire can be mounted for up or down lighting.

Specify product with 7 Digit product code - Finish Color. Accessories, such as mounting, optical, and electrical, must be specified separately.

Example: XXX-XXXX-9004 (Black)
+ XXX-XXXX (Accessory 1)

WE-EF LIGHTING USA, LLC





410-D Keystone Drive, 15086 Warrendale, PA 15086 - Phone: +1 724 742 0030
customersupport.usa@we-ef.com - <https://we-ef.com/us>
Subject to technical changes and errors. - Generated on 11/23/2024

OLV334 LED

Surface Mounted Wall Luminaires

Specifications

Material description

Body	Luminaire body and lens frame constructed in die cast aluminum.
Lens	Tempered glass lens.
Colors	 RAL9004 Black  RAL9007 Grey Metallic  RAL9016 White  RAL8019 Dark Bronze
Gasket	Silicone rubber gasket
Fasteners	PCS polymer coated stainless steel
Ingress protection	IP65
Impact resistance	IK07
Corrosion resistance	5CE

Electrical description

Power supply	Integral [ECG] electronic driver 120V-277V. 0-10V dimmable, to be specified with order.
Driver / Ballast	Integral EC electronic converter

Additional information

Lifetime	Ta=25°/40° L90B10 > 90000h
Listings	ETL listed. Suitable for wet locations.

WE-EF LIGHTING USA, LLC

410-D Keystone Drive, 15086 Warrendale, PA 15086 - Phone: +1 724 742 0030
customersupport.usa@we-ef.com - <https://we-ef.com/us>
Subject to technical changes and errors. - Generated on 11/23/2024

OLV334 LED

Surface Mounted Wall Luminaires

Options

Light distribution



[S70] Type II Short



[R65] Type IV Medium



[A60] Type IV Very Short

Color temperature



3000 K



4000 K



2700 K

Nominal Watt

15 W

29 W

0 W

WE-EF LIGHTING USA, LLC

410-D Keystone Drive, 15086 Warrendale, PA 15086 - Phone: +1 724 742 0030

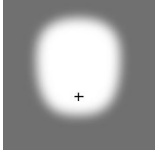
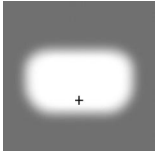
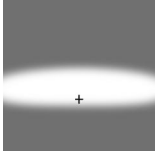
customersupport.usa@we-ef.com - <https://we-ef.com/us>

Subject to technical changes and errors. - Generated on 11/23/2024

OLV334 LED

Surface Mounted Wall Luminaires

Configurations

Light distribution	Part ID	Light source	Rated lumens	Rated input power	CRI	Weight (lb)
[A60] Type IV Very Short 	132-0530	LED-12/12W / 350 mA - 3000 K	1476.3	13.9 W	80	14.60
	132-0531	LED-12/12W / 350 mA - 4000 K	1619.1	13.9 W	80	14.60
	132-0540	LED-12/24W / 700 mA - 3000 K	2630.6	27 W	80	14.60
	132-0541	LED-12/24W / 700 mA - 4000 K	2812	27 W	80	14.60
	132-0641	LED-12/12W / 350 mA - 2700 K	1381	13.9 W	80	14.60
	132-0642	LED-12/24W / 700 mA - 2700 K	2449.2	27 W	80	14.60
[R65] Type IV Medium 	132-0528	LED-12/12W / 350 mA - 3000 K	1394.4	13.9 W	80	14.60
	132-0529	LED-12/12W / 350 mA - 4000 K	1529.4	13.9 W	80	14.60
	132-0538	LED-12/24W / 700 mA - 3000 K	2484.7	27 W	80	14.60
	132-0539	LED-12/24W / 700 mA - 4000 K	2656.1	27 W	80	14.60
	132-0639	LED-12/12W / 350 mA - 2700 K	1304.5	13.9 W	80	14.60
	132-0640	LED-12/24W / 700 mA - 2700 K	2313.3	27 W	80	14.60
[S70] Type II Short 	132-0526	LED-12/12W / 350 mA - 3000 K	1549.2	13.9 W	80	14.60
	132-0527	LED-12/12W / 350 mA - 4000 K	1699.2	13.9 W	80	14.60
	132-0536	LED-12/24W / 700 mA - 3000 K	2760.6	27 W	80	14.60
	132-0537	LED-12/24W / 700 mA - 4000 K	2951	27 W	80	14.60
	132-0637	LED-12/12W / 350 mA - 2700 K	1449.3	13.9 W	80	14.60
	132-0638	LED-12/24W / 700 mA - 2700 K	2570.2	27 W	80	14.60

WE-EF LIGHTING USA, LLC

410-D Keystone Drive, 15086 Warrendale, PA 15086 - Phone: +1 724 742 0030

customersupport.usa@we-ef.com - <https://we-ef.com/us>

Subject to technical changes and errors. - Generated on 11/23/2024

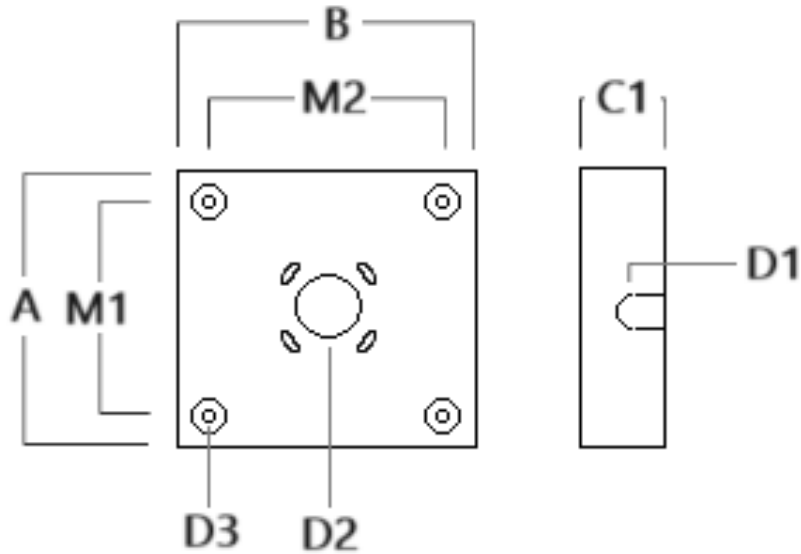
OLV334 LED

Surface Mounted Wall Luminaires

Mounting Accessories

Surface Collar

Description	Part ID	A	B	C1	D1	D2	Weight (lb)
OLV33_Surface Collar	132-6001	8.69	8.63	1.75	∅1	∅2	1.12



WE-EF LIGHTING USA, LLC

410-D Keystone Drive, 15086 Warrendale, PA 15086 - Phone: +1 724 742 0030
customersupport.usa@we-ef.com - <https://we-ef.com/us>

Subject to technical changes and errors. - Generated on 11/23/2024

OLV334 LED



Surface Mounted Wall Luminaires

Electrical Accessories

Emergency Lighting Package

Description	Part ID	Additional information
OLV33_LED Emergency Lighting Package	132-6900	Emergency battery backup operating for a minimum of 90 minutes, at full power, when main power is lost.

WE-EF LIGHTING USA, LLC

410-D Keystone Drive, 15086 Warrendale, PA 15086 - Phone: +1 724 742 0030
customersupport.usa@we-ef.com - <https://we-ef.com/us>
Subject to technical changes and errors. - Generated on 11/23/2024