

**VFL520 LED**

**Pole mounted**

**we-ef**



**WE-EF LIGHTING Pty Ltd**

6/13 Downard Street, 3195 Braeside, Victoria - Phone: +61 3 8587 0444 - Fax: +61 3 8587 0499

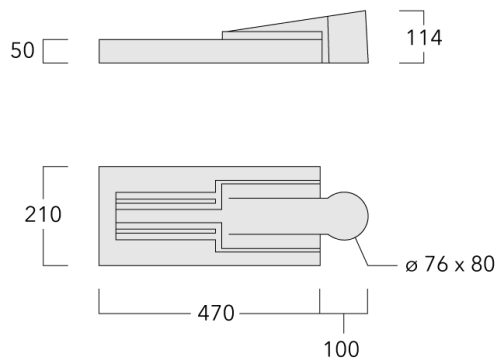
info.australia@we-ef.com - <https://we-ef.com/aus>

Subject to technical changes and errors. - Generated on 23/11/2024

# VFL520 LED

Pole mounted

**we-ef**



## Description

IP66, Class I or Class II. IK08. Marine-grade die-cast aluminium alloy. 5CE superior corrosion protection + primer including PCS hardware. Silicone CCG<sup>®</sup> Controlled Compression Gasket. UV stabilised PC lens in RFC<sup>®</sup> technology. Integrated heat sinks. Easy removal and replacement of LED board. CAD optimised OLC<sup>®</sup> PMMA lens for superior illumination and glare control. DALI. The luminaire is factory-sealed and does not need to be opened during the installation.

PC Amber and 2200 K available on request (to be specified at time of ordering).

Max drive current:

PC Amber - 700 mA

2200 K - 1050 mA (CRI70 only)

Spigot D: 76 x 80 mm (optional 60 x 80 mm).

## WE-EF LIGHTING Pty Ltd




6/13 Downard Street, 3195 Braeside, Victoria - Phone: +61 3 8587 0444 - Fax: +61 3 8587 0499

info.australia@we-ef.com - <https://we-ef.com/aus>

Subject to technical changes and errors. - Generated on 23/11/2024

**Specifications****Material description**

---

Body	Marine-grade, die-cast aluminium alloy
Lens	UV stabilised PC lens in RFC® technology.
Colours	 RAL9004 Signal black  RAL9006 White aluminium  RAL9007 Grey aluminium
Gasket	Silicone CCG® Controlled Compression Gasket
Fasteners	PCS Polymer Coated Stainless Steel Hardware (unpainted)
Ingress protection	IP66
Impact resistance	IK08
Corrosion resistance	5CE+Primer
Windage	0.108 m <sup>2</sup>

---

**Electrical description**

---

Power supply	230V / 50 Hz
Driver / Ballast	Integral EC electronic converter. DALI
Power factor	> 0.9
Surge protection	In-pole surge protection SP10 device supplied. Please refer to WE-EF installation instructions for details. Use suffix +A for Integral surge protection.

---

**Additional information**

---

Lifetime	Ta=40° L90B10 > 90000h
Warranty	The product is supplied with 10-year warranty. Please refer to the LED Warranty Statement located on <a href="http://www.we-ef.com">www.we-ef.com</a> for further details.

---

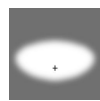
# VFL520 LED

Pole mounted

**we-ef**

## Options

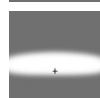
### Light distribution



asymmetric, side throw [S60]



asymmetric, side throw [S65]



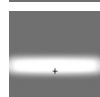
asymmetric, side throw [S70]



rectangular, side throw [R65]



asymmetric, forward throw [A60]



pedestrian/bicycle lane [P65]

### Colour temperature



3000 K



4000 K



2700 K

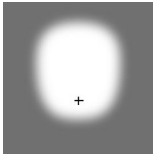
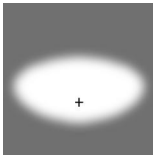
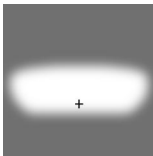
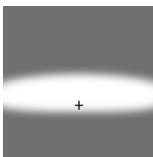
### Nominal Watt

15 W

29 W

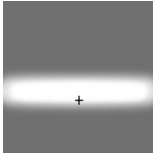
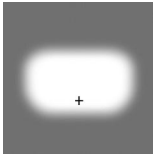
36 W

## Configurations

Light distribution	Part ID	Light source	Rated lumens	Rated input power	CRI	Weight (kg)
asymmetric, forward throw [A60] 	108-1496	LED-12/12W / 350 mA - 3000 K	1635	13.9 W	80	4.70
	108-1497	LED-12/12W / 350 mA - 4000 K	1793.2	13.9 W	80	4.70
	108-1498	LED-12/24W / 700 mA - 3000 K	2948.9	27 W	80	4.70
	108-1499	LED-12/24W / 700 mA - 4000 K	3152.3	27 W	80	4.70
	108-2038	LED-12/36W / 1050 mA - 3000 K	4253.1	41 W	80	4.70
	108-2039	LED-12/36W / 1050 mA - 4000 K	4450.9	41 W	80	4.70
	108-2313	LED-12/12W / 350 mA - 2700 K	1529.5	13.9 W	80	4.70
	108-2314	LED-12/24W / 700 mA - 2700 K	2745.5	27 W	80	4.70
	108-2342	LED-12/36W / 1050 mA - 2700 K	4055.2	41 W	80	4.70
asymmetric, side throw [S60] 	108-1480	LED-12/12W / 350 mA - 3000 K	1722.4	13.9 W	80	4.70
	108-1481	LED-12/12W / 350 mA - 4000 K	1889.1	13.9 W	80	4.70
	108-1482	LED-12/24W / 700 mA - 3000 K	3154	27 W	80	4.70
	108-1483	LED-12/24W / 700 mA - 4000 K	3371.5	27 W	80	4.70
	108-1890	LED-12/24W / 700 mA - 2700 K	2936.4	27 W	80	4.70
	108-2032	LED-12/36W / 1050 mA - 3000 K	4600.1	41 W	80	4.70
	108-2033	LED-12/36W / 1050 mA - 4000 K	4814.1	41 W	80	4.70
	108-2303	LED-12/12W / 350 mA - 2700 K	1611.3	13.9 W	80	4.70
	108-2338	LED-12/36W / 1050 mA - 2700 K	4386.2	41 W	80	4.70
asymmetric, side throw [S65] 	108-1484	LED-12/12W / 350 mA - 3000 K	1744.9	13.9 W	80	4.70
	108-1485	LED-12/12W / 350 mA - 4000 K	1913.7	13.9 W	80	4.70
	108-1486	LED-12/24W / 700 mA - 3000 K	3211.3	27 W	80	4.70
	108-1487	LED-12/24W / 700 mA - 4000 K	3432.7	27 W	80	4.70
	108-2030	LED-12/36W / 1050 mA - 3000 K	4690.2	41 W	80	4.70
	108-2031	LED-12/36W / 1050 mA - 4000 K	4908.3	41 W	80	4.70
	108-2304	LED-12/12W / 350 mA - 2700 K	1632.3	13.9 W	80	4.70
	108-2308	LED-12/24W / 700 mA - 2700 K	2989.8	27 W	80	4.70
	108-2339	LED-12/36W / 1050 mA - 2700 K	4472	41 W	80	4.70
asymmetric, side throw [S70] 	108-1488	LED-12/12W / 350 mA - 3000 K	1714.3	13.9 W	80	4.70
	108-1489	LED-12/12W / 350 mA - 4000 K	1880.2	13.9 W	80	4.70
	108-1490	LED-12/24W / 700 mA - 3000 K	3131.1	27 W	80	4.70
	108-1491	LED-12/24W / 700 mA - 4000 K	3347	27 W	80	4.70
	108-2028	LED-12/36W / 1050 mA - 3000 K	4528.5	41 W	80	4.70
	108-2029	LED-12/36W / 1050 mA - 4000 K	4739.1	41 W	80	4.70
	108-2309	LED-12/12W / 350 mA - 2700 K	1603.7	13.9 W	80	4.70
	108-2310	LED-12/24W / 700 mA - 2700 K	2915.1	27 W	80	4.70

# VFL520 LED

## Pole mounted

Light distribution	Part ID	Light source	Rated lumens	Rated input power	CRI	Weight (kg)
	108-2340	LED-12/36W / 1050 mA - 2700 K	4317.8	41 W	80	4.70
	108-1500	LED-12/12W / 350 mA - 3000 K	1708.3	13.9 W	80	4.70
	108-1501	LED-12/12W / 350 mA - 4000 K	1873.6	13.9 W	80	4.70
	108-1502	LED-12/24W / 700 mA - 3000 K	3122.4	27 W	80	4.70
	108-1503	LED-12/24W / 700 mA - 4000 K	3337.7	27 W	80	4.70
	108-2036	LED-12/36W / 1050 mA - 3000 K	4689.5	41 W	80	4.70
	108-2037	LED-12/36W / 1050 mA - 4000 K	4907.6	41 W	80	4.70
	108-2315	LED-12/12W / 350 mA - 2700 K	1598.1	13.9 W	80	4.70
	108-2316	LED-12/24W / 700 mA - 2700 K	2907.1	27 W	80	4.70
	108-2343	LED-12/36W / 1050 mA - 2700 K	4471.4	41 W	80	4.70
	108-1492	LED-12/12W / 350 mA - 3000 K	1670.7	13.9 W	80	4.70
	108-1493	LED-12/12W / 350 mA - 4000 K	1832.4	13.9 W	80	4.70
	108-1494	LED-12/24W / 700 mA - 3000 K	3013.3	27 W	80	4.70
	108-1495	LED-12/24W / 700 mA - 4000 K	3221.1	27 W	80	4.70
	108-2034	LED-12/36W / 1050 mA - 3000 K	4349.9	41 W	80	4.70
	108-2035	LED-12/36W / 1050 mA - 4000 K	4552.2	41 W	80	4.70
	108-2311	LED-12/12W / 350 mA - 2700 K	1562.9	13.9 W	80	4.70
	108-2312	LED-12/24W / 700 mA - 2700 K	2805.5	27 W	80	4.70
	108-2341	LED-12/36W / 1050 mA - 2700 K	4147.6	41 W	80	4.70

# VFL520 LED

Pole mounted

**we-ef**

## Control

### Eco Step Dim® Basic

Description	Part ID
Eco Step Dim® Basic LED	430-0001

### Eco Step Dim® Advanced

Description	Part ID
Eco Step Dim® Advanced LED	430-0002

### R2C Ready to Connect

Description	Part ID
R2C Ready to Connect (top)	430-0019
R2C Ready to Connect (below)	430-0027
R2C Ready to Connect (top and below)	430-0032

#### WE-EF LIGHTING Pty Ltd

6/13 Downard Street, 3195 Braeside, Victoria - Phone: +61 3 8587 0444 - Fax: +61 3 8587 0499

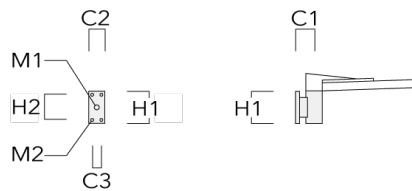
info.australia@we-ef.com - <https://we-ef.com/aus>

Subject to technical changes and errors. - Generated on 23/11/2024

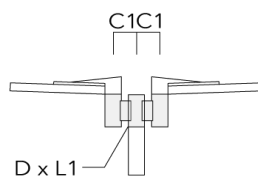
**Mounting Accessories**

**Wall and pole brackets RV**

Description	Part ID	Additional information	C1	C2	C3	D1	D × L1	H1	H2	M1	M2	Weight (kg)	C	D	H
RV0 Wall Bracket	108-0979	RV0 Wall bracket	108	100	60			200	160	38	12	2.00	108		



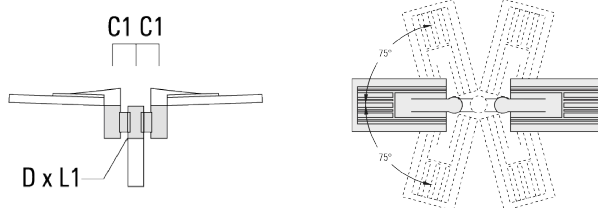
RV2-76 Pole bracket, double	108-0980		147				76 x 100					4.80	147	76	200
-----------------------------	----------	--	-----	--	--	--	----------	--	--	--	--	------	-----	----	-----



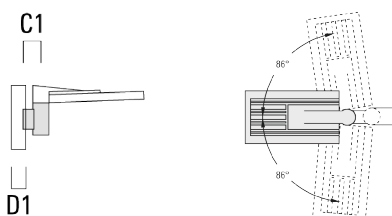


**Pole mounted**

Description	Part ID	Additional information	C1	C2	C3	D1	D × L1	H1	H2	M1	M2	Weight (kg)	C	D	H
RV2-60 Pole bracket, double	108-0981	147					60 x 100					4.80	147	60	200



RV5 Pole bracket	108-0982	108				76-240						1.70	106	200
------------------	----------	-----	--	--	--	--------	--	--	--	--	--	------	-----	-----



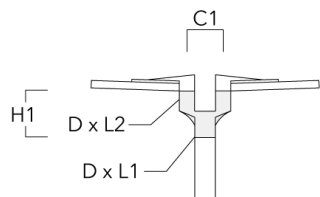
# VFL520 LED

Pole mounted

**we-ef**

## Post top fitter AKV

Description	Part ID	C1	D × L1	D × L2	H1	Weight (kg)
AKV2-76	300-0053	180	76x100	76x80	235	1.50



### WE-EF LIGHTING Pty Ltd

6/13 Downard Street, 3195 Braeside, Victoria - Phone: +61 3 8587 0444 - Fax: +61 3 8587 0499

info.australia@we-ef.com - <https://we-ef.com/aus>

Subject to technical changes and errors. - Generated on 23/11/2024

**Optical Accessories****Light shield**

Description	Part ID	Additional information
LS180-[A60]	003-4018	Glare Shield for backlight spill. Glare Shield factory-installed or available as retrofit kit. Suitable for [A60] lenses. Must be specified at time of ordering.
LS180	003-4019	Glare Shield for backlight spill. Glare Shield factory-installed or available as retrofit kit. Suitable for [S60], [S65], [S70], [R65], [P65] lenses. Must be specified at time of ordering.