

**VFL520 LED**

**Pole mounted**

**we-ef**



**Fagerhult Lighting Ltd**

33-34 Dolben Street, SE1 0UQ London, United Kingdom

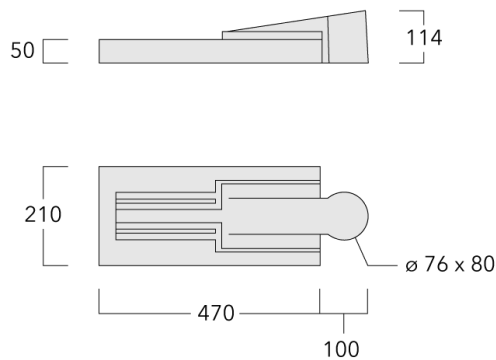
<https://we-ef.com/uk>

Subject to technical changes and errors. - Generated on 27/11/2024

# VFL520 LED

Pole mounted

**we-ef**



## Description

IP66, Class I or Class II. IK08. Marine-grade, die-cast aluminium alloy. 5CE superior corrosion protection including PCS hardware. Silicone CCG® Controlled Compression Gasket. RFC® Reflection Free Contour main lens. Integral EC electronic converter in thermally separated compartment. DALI. CAD-optimised optics for superior illumination and glare control. OLC® One LED Concept. Factory installed LED circuit board. The luminaire is factory-sealed and does not need to be opened during installation.

Optional 2200 K version available. To be specified at time of ordering.

Spigot  $\varnothing 60 \times 80$  mm optional available. Must be indicated during order placement.

## Fagerhult Lighting Ltd





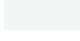
33-34 Dolben Street, SE1 0UQ London, United Kingdom

<https://we-ef.com/uk>

Subject to technical changes and errors. - Generated on 27/11/2024

**Specifications****Material description**

---

Body	Marine-grade, die-cast aluminium alloy
Lens	RFC® Reflection Free Contour technology
Colours	 RAL9004 Signal black  RAL9006 White aluminium  RAL9007 Grey aluminium  RAL7016 Anthracite grey  RAL9016 Traffic white
Gasket	Silicone CCG® Controlled Compression Gasket
Fasteners	PCS Polymer Coated Stainless Steel Hardware
Ingress protection	IP66
Impact resistance	IK08
Corrosion resistance	5CE
Windage	0.108 m <sup>2</sup>

---

**Electrical description**

---

Power supply	220-240V / 50-60 Hz
Driver / Ballast	Integral EC electronic converter. DALI
Power factor	> 0.9
Surge protection	6/6 kV

---

**Additional information**

---

Lifetime	Ta=25° L90B10 > 90000h
Energy efficiency class	C-D (Light source)

---


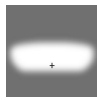
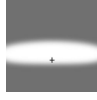


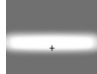
# VFL520 LED

Pole mounted


**we-ef**

## Options

### Light distribution

	asymmetric, side throw beam [S60]
	asymmetric, side throw beam [S65]
	asymmetric, side throw [S70]
	rectangular, side throw [R65]
	asymmetric, forward throw [A60]
	pedestrian/bicycle lane [P65]

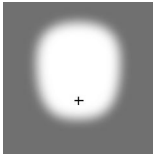
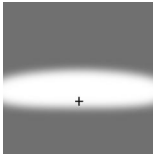
### Colour temperature

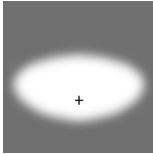
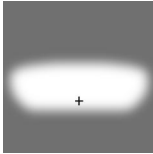
	3000 K
	4000 K
	2700 K

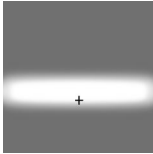
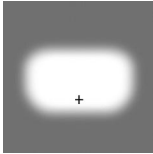
### Nominal Watt

15 W  
29 W  
36 W

## Configurations

Light distribution	Part ID	Light source	Rated lumens	Rated input power	CRI	Weight (kg)
asymmetric, forward throw [A60] 	108-1496	LED-12/12W / 350 mA - 3000 K	1635	13.9 W	80	4.70
	108-1496-70	LED-12/12W / 350 mA - 3000 K	1898.7	13.9 W	70	4.70
	108-1497	LED-12/12W / 350 mA - 4000 K	1793.2	13.9 W	80	4.70
	108-1497-70	LED-12/12W / 350 mA - 4000 K	2004.2	13.9 W	70	4.70
	108-1498	LED-12/24W / 700 mA - 3000 K	2948.9	27 W	80	4.70
	108-1498-70	LED-12/24W / 700 mA - 3000 K	3355.7	27 W	70	4.70
	108-1499	LED-12/24W / 700 mA - 4000 K	3152.3	27 W	80	4.70
	108-1499-70	LED-12/24W / 700 mA - 4000 K	3559	27 W	70	4.70
	108-2038	LED-12/36W / 1050 mA - 3000 K	4253.1	41 W	80	4.70
	108-2038-70	LED-12/36W / 1050 mA - 3000 K	4846.5	41 W	70	4.70
	108-2039	LED-12/36W / 1050 mA - 4000 K	4450.9	41 W	80	4.70
	108-2039-70	LED-12/36W / 1050 mA - 4000 K	5044.3	41 W	70	4.70
	108-2313	LED-12/12W / 350 mA - 2700 K	1529.5	13.9 W	80	4.70
	108-2313-70	LED-12/12W / 350 mA - 2700 K	1635	13.9 W	70	4.70
	108-2314	LED-12/24W / 700 mA - 2700 K	2745.5	27 W	80	4.70
	108-2314-70	LED-12/24W / 700 mA - 2700 K	2948.9	27 W	70	4.70
	108-2342	LED-12/36W / 1050 mA - 2700 K	4055.2	41 W	80	4.70
	108-2342-70	LED-12/36W / 1050 mA - 2700 K	4648.7	41 W	70	4.70
asymmetric, side throw [S70] 	108-1488	LED-12/12W / 350 mA - 3000 K	1714.3	13.9 W	80	4.70
	108-1488-70	LED-12/12W / 350 mA - 3000 K	1990.8	13.9 W	70	4.70
	108-1489	LED-12/12W / 350 mA - 4000 K	1880.2	13.9 W	80	4.70
	108-1489-70	LED-12/12W / 350 mA - 4000 K	2101.4	13.9 W	70	4.70
	108-1490	LED-12/24W / 700 mA - 3000 K	3131.1	27 W	80	4.70
	108-1490-70	LED-12/24W / 700 mA - 3000 K	3562.9	27 W	70	4.70
	108-1491	LED-12/24W / 700 mA - 4000 K	3347	27 W	80	4.70
	108-1491-70	LED-12/24W / 700 mA - 4000 K	3778.9	27 W	70	4.70
	108-2028	LED-12/36W / 1050 mA - 3000 K	4528.5	41 W	80	4.70
	108-2028-70	LED-12/36W / 1050 mA - 3000 K	5160.3	41 W	70	4.70
	108-2029	LED-12/36W / 1050 mA - 4000 K	4739.1	41 W	80	4.70
	108-2029-70	LED-12/36W / 1050 mA - 4000 K	5371	41 W	70	4.70
	108-2309	LED-12/12W / 350 mA - 2700 K	1603.7	13.9 W	80	4.70
	108-2309-70	LED-12/12W / 350 mA - 2700 K	1714.3	13.9 W	70	4.70
	108-2310	LED-12/24W / 700 mA - 2700 K	2915.1	27 W	80	4.70
	108-2310-70	LED-12/24W / 700 mA - 2700 K	3131.1	27 W	70	4.70
	108-2340	LED-12/36W / 1050 mA - 2700 K	4317.8	41 W	80	4.70

Light distribution	Part ID	Light source	Rated lumens	Rated input power	CRI	Weight (kg)
	108-2340-70	LED-12/36W / 1050 mA - 2700 K	4949.7	41 W	70	4.70
asymmetric, side throw beam [S60]	108-1480	LED-12/12W / 350 mA - 3000 K	1722.4	13.9 W	80	4.70
	108-1480-70	LED-12/12W / 350 mA - 3000 K	2000.3	13.9 W	70	4.70
	108-1481	LED-12/12W / 350 mA - 4000 K	1889.1	13.9 W	80	4.70
	108-1481-70	LED-12/12W / 350 mA - 4000 K	2111.4	13.9 W	70	4.70
	108-1482	LED-12/24W / 700 mA - 3000 K	3154	27 W	80	4.70
	108-1482-70	LED-12/24W / 700 mA - 3000 K	3589	27 W	70	4.70
	108-1483	LED-12/24W / 700 mA - 4000 K	3371.5	27 W	80	4.70
	108-1483-70	LED-12/24W / 700 mA - 4000 K	3806.5	27 W	70	4.70
	108-1890	LED-12/24W / 700 mA - 2700 K	2936.4	27 W	80	4.70
	108-1890-70	LED-12/24W / 700 mA - 2700 K	3154	27 W	70	4.70
	108-2032	LED-12/36W / 1050 mA - 3000 K	4600.1	41 W	80	4.70
	108-2032-70	LED-12/36W / 1050 mA - 3000 K	5242	41 W	70	4.70
	108-2033	LED-12/36W / 1050 mA - 4000 K	4814.1	41 W	80	4.70
	108-2033-70	LED-12/36W / 1050 mA - 4000 K	5456	41 W	70	4.70
	108-2303	LED-12/12W / 350 mA - 2700 K	1611.3	13.9 W	80	4.70
	108-2303-70	LED-12/12W / 350 mA - 2700 K	1722.4	13.9 W	70	4.70
	108-2338	LED-12/36W / 1050 mA - 2700 K	4386.2	41 W	80	4.70
	108-2338-70	LED-12/36W / 1050 mA - 2700 K	5028.1	41 W	70	4.70
asymmetric, side throw beam [S65]	108-1484	LED-12/12W / 350 mA - 3000 K	1744.9	13.9 W	80	4.70
	108-1484-70	LED-12/12W / 350 mA - 3000 K	2026.3	13.9 W	70	4.70
	108-1485	LED-12/12W / 350 mA - 4000 K	1913.7	13.9 W	80	4.70
	108-1485-70	LED-12/12W / 350 mA - 4000 K	2138.9	13.9 W	70	4.70
	108-1486	LED-12/24W / 700 mA - 3000 K	3211.3	27 W	80	4.70
	108-1486-70	LED-12/24W / 700 mA - 3000 K	3654.2	27 W	70	4.70
	108-1487	LED-12/24W / 700 mA - 4000 K	3432.7	27 W	80	4.70
	108-1487-70	LED-12/24W / 700 mA - 4000 K	3875.7	27 W	70	4.70
	108-2030	LED-12/36W / 1050 mA - 3000 K	4690.2	41 W	80	4.70
	108-2030-70	LED-12/36W / 1050 mA - 3000 K	5344.6	41 W	70	4.70
	108-2031	LED-12/36W / 1050 mA - 4000 K	4908.3	41 W	80	4.70
	108-2031-70	LED-12/36W / 1050 mA - 4000 K	5562.8	41 W	70	4.70
	108-2304	LED-12/12W / 350 mA - 2700 K	1632.3	13.9 W	80	4.70
	108-2304-70	LED-12/12W / 350 mA - 2700 K	1744.9	13.9 W	70	4.70
	108-2308	LED-12/24W / 700 mA - 2700 K	2989.8	27 W	80	4.70
	108-2308-70	LED-12/24W / 700 mA - 2700 K	3211.3	27 W	70	4.70
	108-2339	LED-12/36W / 1050 mA - 2700 K	4472	41 W	80	4.70

Light distribution	Part ID	Light source	Rated lumens	Rated input power	CRI	Weight (kg)
pedestrian/bicycle lane [P65] 	108-2339-70	LED-12/36W / 1050 mA - 2700 K	5126.5	41 W	70	4.70
	108-1500	LED-12/12W / 350 mA - 3000 K	1708.3	13.9 W	80	4.70
	108-1500-70	LED-12/12W / 350 mA - 3000 K	1983.8	13.9 W	70	4.70
	108-1501	LED-12/12W / 350 mA - 4000 K	1873.6	13.9 W	80	4.70
	108-1501-70	LED-12/12W / 350 mA - 4000 K	2094.1	13.9 W	70	4.70
	108-1502	LED-12/24W / 700 mA - 3000 K	3122.4	27 W	80	4.70
	108-1502-70	LED-12/24W / 700 mA - 3000 K	3553.1	27 W	70	4.70
	108-1503	LED-12/24W / 700 mA - 4000 K	3337.7	27 W	80	4.70
	108-1503-70	LED-12/24W / 700 mA - 4000 K	3768.4	27 W	70	4.70
	108-2036	LED-12/36W / 1050 mA - 3000 K	4689.5	41 W	80	4.70
	108-2036-70	LED-12/36W / 1050 mA - 3000 K	5343.8	41 W	70	4.70
	108-2037	LED-12/36W / 1050 mA - 4000 K	4907.6	41 W	80	4.70
	108-2037-70	LED-12/36W / 1050 mA - 4000 K	5562	41 W	70	4.70
	108-2315	LED-12/12W / 350 mA - 2700 K	1598.1	13.9 W	80	4.70
	108-2315-70	LED-12/12W / 350 mA - 2700 K	1708.3	13.9 W	70	4.70
	108-2316	LED-12/24W / 700 mA - 2700 K	2907.1	27 W	80	4.70
	108-2316-70	LED-12/24W / 700 mA - 2700 K	3122.4	27 W	70	4.70
	108-2343	LED-12/36W / 1050 mA - 2700 K	4471.4	41 W	80	4.70
	108-2343-70	LED-12/36W / 1050 mA - 2700 K	5125.7	41 W	70	4.70
rectangular, side throw [R65] 	108-1492	LED-12/12W / 350 mA - 3000 K	1670.7	13.9 W	80	4.70
	108-1492-70	LED-12/12W / 350 mA - 3000 K	1940.2	13.9 W	70	4.70
	108-1493	LED-12/12W / 350 mA - 4000 K	1832.4	13.9 W	80	4.70
	108-1493-70	LED-12/12W / 350 mA - 4000 K	2048	13.9 W	70	4.70
	108-1494	LED-12/24W / 700 mA - 3000 K	3013.3	27 W	80	4.70
	108-1494-70	LED-12/24W / 700 mA - 3000 K	3429	27 W	70	4.70
	108-1495	LED-12/24W / 700 mA - 4000 K	3221.1	27 W	80	4.70
	108-1495-70	LED-12/24W / 700 mA - 4000 K	3636.8	27 W	70	4.70
	108-2034	LED-12/36W / 1050 mA - 3000 K	4349.9	41 W	80	4.70
	108-2034-70	LED-12/36W / 1050 mA - 3000 K	4956.9	41 W	70	4.70
	108-2035	LED-12/36W / 1050 mA - 4000 K	4552.2	41 W	80	4.70
	108-2035-70	LED-12/36W / 1050 mA - 4000 K	5159.2	41 W	70	4.70
	108-2311	LED-12/12W / 350 mA - 2700 K	1562.9	13.9 W	80	4.70
	108-2311-70	LED-12/12W / 350 mA - 2700 K	1670.7	13.9 W	70	4.70
	108-2312	LED-12/24W / 700 mA - 2700 K	2805.5	27 W	80	4.70
	108-2312-70	LED-12/24W / 700 mA - 2700 K	3013.3	27 W	70	4.70
	108-2341	LED-12/36W / 1050 mA - 2700 K	4147.6	41 W	80	4.70

# VFL520 LED

Pole mounted

**we-ef**

Light distribution	Part ID	Light source	Rated lumens	Rated input power	CRI	Weight (kg)
	108-2341-70	LED-12/36W / 1050 mA - 2700 K	4754.6	41 W	70	4.70

**Fagerhult Lighting Ltd**

33-34 Dolben Street, SE1 0UQ London, United Kingdom

<https://we-ef.com/uk>

Subject to technical changes and errors. - Generated on 27/11/2024



# VFL520 LED

Pole mounted

## Control

### Eco Step Dim® Basic

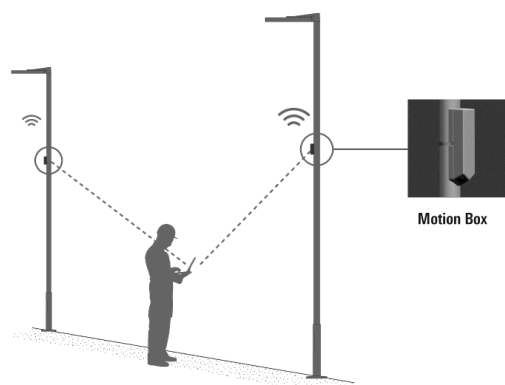
Description	Part ID
Eco Step Dim® Basic LED	430-0001

### Eco Step Dim® Advanced

Description	Part ID
Eco Step Dim® Advanced LED	430-0002

### Eco Step Dim® Motion

Description	Part ID
Eco Step Dim® Motion - Linked	430-0021



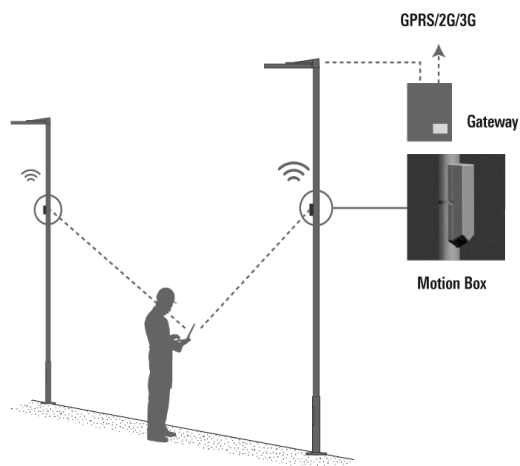
# VFL520 LED

## Pole mounted

---

Description	Part ID
Eco Step Dim® Motion - Connected	430-0022

---



---

## R2C Ready to Connect

---

Description	Part ID
R2C Ready to Connect (top)	430-0019
R2C Ready to Connect (below)	430-0027
R2C Ready to Connect (top and below)	430-0032

---

### Fagerhult Lighting Ltd

33-34 Dolben Street, SE1 0UQ London, United Kingdom

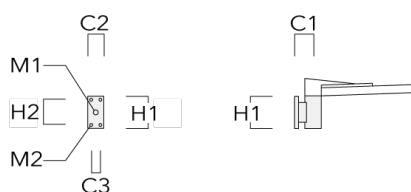
<https://we-ef.com/uk>

Subject to technical changes and errors. - Generated on 27/11/2024

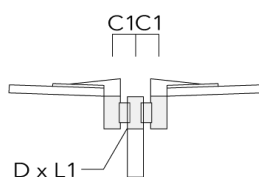
**Mounting Accessories**

**Wall and pole brackets RV**

Description	Part ID	Additional information	C1	C2	C3	D1	D × L1	H1	H2	M1	M2	Weight (kg)	C	D	H
RV0 Wall bracket	108-0979	RV0 Wall bracket	108	100	60			200	160	38	12	2.00	108		

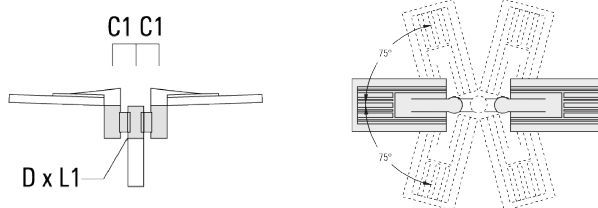


RV2-76 Pole bracket, double	108-0980		147				76 x 100					4.80	147	76	200
-----------------------------	----------	--	-----	--	--	--	----------	--	--	--	--	------	-----	----	-----

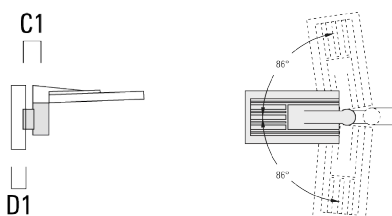


Pole mounted

Description	Part ID	Additional information	C1	C2	C3	D1	D × L1	H1	H2	M1	M2	Weight (kg)	C	D	H
RV2-60 Pole bracket, double	108-0981	147					60 x 100					4.80	147	60	200



RV5 Pole bracket	108-0982	108				76-240						1.70	106	200
------------------	----------	-----	--	--	--	--------	--	--	--	--	--	------	-----	-----



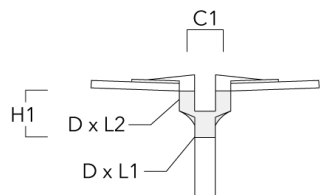
# VFL520 LED

Pole mounted

**we-ef**

## Post top fitter AKV

Description	Part ID	C1	D × L1	D × L2	H1	Weight (kg)
AKV2-76	300-0053	180	76x100	76x80	235	1.50



**Optical Accessories****Light shield**

Description	Part ID	Additional information
LS180-[A60]	430-0038	Light shield LS180 to greatly reduce or eliminate light pollution. PA injection moulded component, black matt. Suitable for asymmetric light distribution [A60].
LS180	430-0029	Glare Shield for backlight spill. Glare Shield factory-installed or available as retrofit kit. Suitable for [S60], [S65], [S70], [R65], [P65] lenses. Must be specified at time of ordering.