

**VFL520 LED**

**Pole mounted**

**we-ef**



**WE-EF LIGHTING (Thailand) Co., Ltd.**

57 Moo 5, Kingkaew Rd., Bangplee, 10540 Samutprakarn - Phone: +66 2 738 96 20 - Fax: +66 2 738 96 29

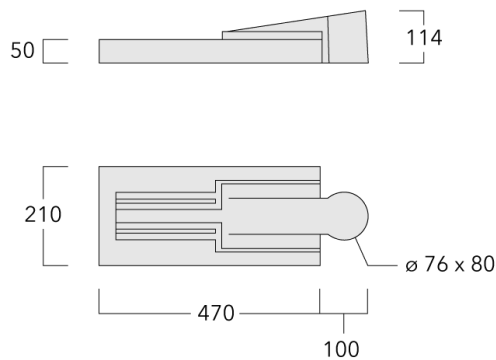
<https://we-ef.com/asia>

Subject to technical changes and errors. - Generated on 23/11/2024

# VFL520 LED

Pole mounted

**we-ef**



## Description

IP66, Class I. IK08. Marine-grade, die-cast aluminium alloy. 5CE superior corrosion protection including PCS hardware. RFC™ Reflection Free Contour main lens. Silicone CCG® Controlled Compression Gasket. Luminaire is factory-sealed and does not need to be opened during installation.

Integral EC electronic converter. DALI interface. Advanced thermal management protects LEDs while optimising lumens output. Removable LED boards for upgrading. CAD-optimised optics for superior illumination and glare control. OLC® One LED Concept. Optional 2200 K version available. To be specified at time of ordering.

Maximum spacing for streetlighting applications depends on wattage and light distribution: 5.5 to 9 times the mounting height.

## WE-EF LIGHTING (Thailand) Co., Ltd.

57 Moo 5, Kingkaew Rd., Bangplee, 10540 Samutprakarn - Phone: +66 2 738 96 20 - Fax: +66 2 738 96 29

<https://we-ef.com/asia>

Subject to technical changes and errors. - Generated on 23/11/2024





# VFL520 LED

Pole mounted

**we-ef**

## Specifications

### Material description

Body	Marine-grade, die-cast aluminium alloy
Lens	RFC™ Reflection Free Contour main lens
Colours	 RAL9004 Signal black  RAL9007 Grey aluminium  RAL7016 Anthracite grey  RAL9016 Traffic white
Gasket	Silicone CCG® Controlled Compression Gasket
Fasteners	PCS Polymer Coated Stainless Steel hardware
Ingress protection	IP66
Impact resistance	IK08
Corrosion resistance	5CE
Windage	0.108 m <sup>2</sup>

### Electrical description

Driver / Ballast	Integral electronic converter with DALI interface
------------------	---

### Additional information

Lifetime	Ta=25° L90B10 > 90000h
BUG Rating	Please see individual Spec Sheets for classification of Backlight, Uplight and Glare

**WE-EF LIGHTING (Thailand) Co., Ltd.**

57 Moo 5, Kingkaew Rd., Bangplee, 10540 Samutprakarn - Phone: +66 2 738 96 20 - Fax: +66 2 738 96 29

<https://we-ef.com/asia>

Subject to technical changes and errors. - Generated on 23/11/2024

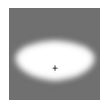
# VFL520 LED

Pole mounted

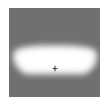
**we-ef**

## Options

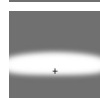
### Light distribution



asymmetric, side throw [S60]



asymmetric, side throw [S65]



asymmetric, side throw [S70]



rectangular, side throw [R65]



asymmetric, forward throw [A60]



pedestrian/bicycle lane [P65]

### Colour temperature



3000 K



4000 K



2700 K

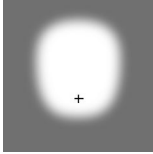
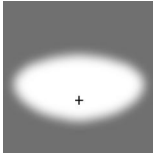
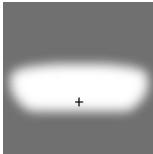
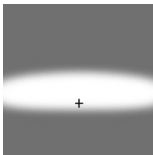
### Nominal Watt

15 W

29 W

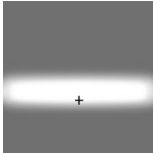
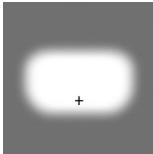
36 W

### Configurations

Light distribution	Part ID	Light source	Rated lumens	Rated input power	CRI	Weight (kg)
asymmetric, forward throw [A60] 	108-1496	LED-12/12W / 350 mA - 3000 K	1635	13.9 W	80	4.70
	108-1497	LED-12/12W / 350 mA - 4000 K	1793.2	13.9 W	80	4.70
	108-1498	LED-12/24W / 700 mA - 3000 K	2948.9	27 W	80	4.70
	108-1499	LED-12/24W / 700 mA - 4000 K	3152.3	27 W	80	4.70
	108-2038	LED-12/36W / 1050 mA - 3000 K	4253.1	41 W	80	4.70
	108-2039	LED-12/36W / 1050 mA - 4000 K	4450.9	41 W	80	4.70
	108-2313	LED-12/12W / 350 mA - 2700 K	1529.5	13.9 W	80	4.70
	108-2314	LED-12/24W / 700 mA - 2700 K	2745.5	27 W	80	4.70
108-2342	LED-12/36W / 1050 mA - 2700 K	4055.2	41 W	80	4.70	
asymmetric, side throw [S60] 	108-1480	LED-12/12W / 350 mA - 3000 K	1722.4	13.9 W	80	4.70
	108-1481	LED-12/12W / 350 mA - 4000 K	1889.1	13.9 W	80	4.70
	108-1482	LED-12/24W / 700 mA - 3000 K	3154	27 W	80	4.70
	108-1483	LED-12/24W / 700 mA - 4000 K	3371.5	27 W	80	4.70
	108-1890	LED-12/24W / 700 mA - 2700 K	2936.4	27 W	80	4.70
	108-2032	LED-12/36W / 1050 mA - 3000 K	4600.1	41 W	80	4.70
	108-2033	LED-12/36W / 1050 mA - 4000 K	4814.1	41 W	80	4.70
	108-2303	LED-12/12W / 350 mA - 2700 K	1611.3	13.9 W	80	4.70
108-2338	LED-12/36W / 1050 mA - 2700 K	4386.2	41 W	80	4.70	
asymmetric, side throw [S65] 	108-1484	LED-12/12W / 350 mA - 3000 K	1744.9	13.9 W	80	4.70
	108-1485	LED-12/12W / 350 mA - 4000 K	1913.7	13.9 W	80	4.70
	108-1486	LED-12/24W / 700 mA - 3000 K	3211.3	27 W	80	4.70
	108-1487	LED-12/24W / 700 mA - 4000 K	3432.7	27 W	80	4.70
	108-2030	LED-12/36W / 1050 mA - 3000 K	4690.2	41 W	80	4.70
	108-2031	LED-12/36W / 1050 mA - 4000 K	4908.3	41 W	80	4.70
	108-2304	LED-12/12W / 350 mA - 2700 K	1632.3	13.9 W	80	4.70
	108-2308	LED-12/24W / 700 mA - 2700 K	2989.8	27 W	80	4.70
108-2339	LED-12/36W / 1050 mA - 2700 K	4472	41 W	80	4.70	
asymmetric, side throw [S70] 	108-1488	LED-12/12W / 350 mA - 3000 K	1714.3	13.9 W	80	4.70
	108-1489	LED-12/12W / 350 mA - 4000 K	1880.2	13.9 W	80	4.70
	108-1490	LED-12/24W / 700 mA - 3000 K	3131.1	27 W	80	4.70
	108-1491	LED-12/24W / 700 mA - 4000 K	3347	27 W	80	4.70
	108-2028	LED-12/36W / 1050 mA - 3000 K	4528.5	41 W	80	4.70
	108-2029	LED-12/36W / 1050 mA - 4000 K	4739.1	41 W	80	4.70
	108-2309	LED-12/12W / 350 mA - 2700 K	1603.7	13.9 W	80	4.70
	108-2310	LED-12/24W / 700 mA - 2700 K	2915.1	27 W	80	4.70

# VFL520 LED

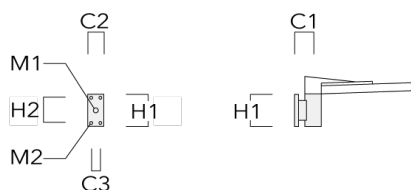
## Pole mounted

Light distribution	Part ID	Light source	Rated lumens	Rated input power	CRI	Weight (kg)
 pedestrian/bicycle lane [P65]	108-2340	LED-12/36W / 1050 mA - 2700 K	4317.8	41 W	80	4.70
	108-1500	LED-12/12W / 350 mA - 3000 K	1708.3	13.9 W	80	4.70
	108-1501	LED-12/12W / 350 mA - 4000 K	1873.6	13.9 W	80	4.70
	108-1502	LED-12/24W / 700 mA - 3000 K	3122.4	27 W	80	4.70
	108-1503	LED-12/24W / 700 mA - 4000 K	3337.7	27 W	80	4.70
	108-2036	LED-12/36W / 1050 mA - 3000 K	4689.5	41 W	80	4.70
	108-2037	LED-12/36W / 1050 mA - 4000 K	4907.6	41 W	80	4.70
	108-2315	LED-12/12W / 350 mA - 2700 K	1598.1	13.9 W	80	4.70
	108-2316	LED-12/24W / 700 mA - 2700 K	2907.1	27 W	80	4.70
	108-2343	LED-12/36W / 1050 mA - 2700 K	4471.4	41 W	80	4.70
 rectangular, side throw [R65]	108-1492	LED-12/12W / 350 mA - 3000 K	1670.7	13.9 W	80	4.70
	108-1493	LED-12/12W / 350 mA - 4000 K	1832.4	13.9 W	80	4.70
	108-1494	LED-12/24W / 700 mA - 3000 K	3013.3	27 W	80	4.70
	108-1495	LED-12/24W / 700 mA - 4000 K	3221.1	27 W	80	4.70
	108-2034	LED-12/36W / 1050 mA - 3000 K	4349.9	41 W	80	4.70
	108-2035	LED-12/36W / 1050 mA - 4000 K	4552.2	41 W	80	4.70
	108-2311	LED-12/12W / 350 mA - 2700 K	1562.9	13.9 W	80	4.70
	108-2312	LED-12/24W / 700 mA - 2700 K	2805.5	27 W	80	4.70
	108-2341	LED-12/36W / 1050 mA - 2700 K	4147.6	41 W	80	4.70

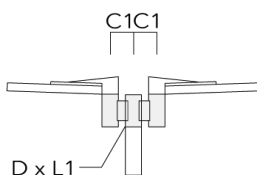
**Mounting Accessories**

**Wall and pole brackets RV**

Description	Part ID	Additional information	C1	C2	C3	D1	D × L1	H1	H2	M1	M2	Weight (kg)	C	D	H
RV0 Wall bracket	108-0979-AP	RV0 Wall bracket	108	100	45			200	160	40	12	2.80	108		

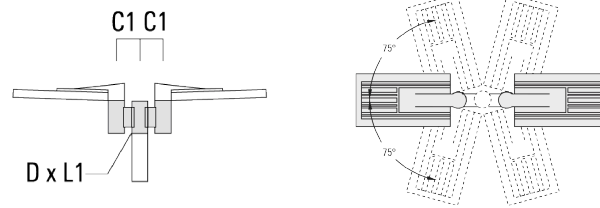


RV2-76 Pole bracket, double	108-0980		147				76 x 100					8.10	147	76	200
-----------------------------	----------	--	-----	--	--	--	----------	--	--	--	--	------	-----	----	-----

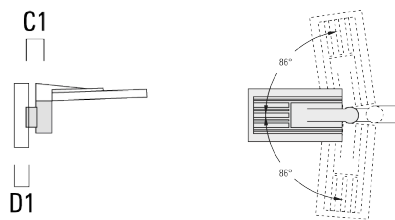


## Pole mounted

Description	Part ID	Additional information	C1	C2	C3	D1	D × L1	H1	H2	M1	M2	Weight (kg)	C	D	H
RV2-60 Pole bracket, double	108-0981	147					60 x 100					8.50	147	60	200



RV5 Pole bracket	108-0982	108				76-240						2.30	106		200
------------------	----------	-----	--	--	--	--------	--	--	--	--	--	------	-----	--	-----





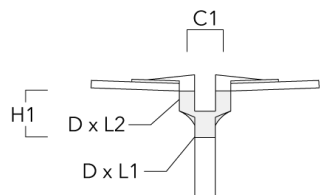
# VFL520 LED

Pole mounted

**we-ef**

## AKV

Description	Part ID	C1	D × L1	D × L2	H1	Weight (kg)
AKV2-76	300-0053	180	76x100	76x80	235	1.50



# VFL520 LED

Pole mounted

**we-ef**

## Control

### R2C Ready to Connect

Description	Part ID
R2C Ready to Connect (top)	430-0019
R2C Ready to Connect (below)	430-0027
R2C Ready to Connect (top and below)	430-0032

**WE-EF LIGHTING (Thailand) Co., Ltd.**

57 Moo 5, Kingkaew Rd., Bangplee, 10540 Samutprakarn - Phone: +66 2 738 96 20 - Fax: +66 2 738 96 29

<https://we-ef.com/asia>

Subject to technical changes and errors. - Generated on 23/11/2024