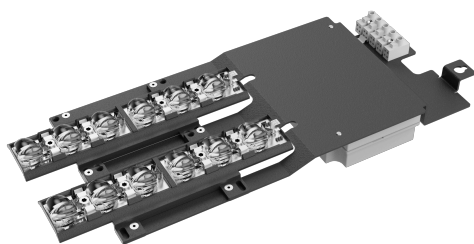


# VFL520 LED Upgrade Kit

## Street and Area Lighting

**we-ef**



### Description

LED upgrade kit to repair or upgrade installed VFL520 LED luminaires (from 2014) with [S60] [S65] [S70] [S65] light distribution.

Upgrade kit uses the latest technology for improved energy performance. Connectivity and controls dependent on previous luminaire settings; DALI and 0-10V only possible if luminaire installed with 5-wire cable. One LED retrofit kit possible per luminaire.

Upgrade Kit comes complete with driver, LED board, optics and cables. Quick installation possible with few tools.

Installation only possible with 6 LED board and only for forward orientation. No rotation of lenses possible. Not available for existing hybrid installations. A backlight shield cannot be used.

Please specify wattage, colour temperature and light distribution when ordering!

For photometric data see current VFL520 LED luminaires.

### WE-EF LIGHTING USA, LLC

410-D Keystone Drive, 15086 Warrendale, PA 15086 - Phone: +1 724 742 0030

customersupport.usa@we-ef.com - <https://we-ef.com/us>

Subject to technical changes and errors. - Generated on 11/23/2024

# VFL520 LED Upgrade Kit

## Street and Area Lighting

**we-ef**

### Specifications

#### Material description

---

Body	Chassis made of coated steel
Lens	NA
Colors	
Gasket	NA
Fasteners	Polycarbonate holder
Corrosion resistance	NA

---

#### Electrical description

---

Driver / Ballast	Integral EC electronic converter. DALI
Power factor	> 9.0

---

#### Additional information

---

Lifetime	Ta=25°/40° L90B10 > 90000h
----------	----------------------------

---

#### WE-EF LIGHTING USA, LLC

410-D Keystone Drive, 15086 Warrendale, PA 15086 - Phone: +1 724 742 0030  
customersupport.usa@we-ef.com - <https://we-ef.com/us>

Subject to technical changes and errors. - Generated on 11/23/2024

# VFL520 LED Upgrade Kit

Street and Area Lighting

**we-ef**

## Options

Light distribution   Color temperature   Nominal Watt

### **WE-EF LIGHTING USA, LLC**

410-D Keystone Drive, 15086 Warrendale, PA 15086 - Phone: +1 724 742 0030

customersupport.usa@we-ef.com - <https://we-ef.com/us>

Subject to technical changes and errors. - Generated on 11/23/2024

# VFL520 LED Upgrade Kit

## Street and Area Lighting



### Configurations

Light distribution	Part ID	Light source	Rated lumens	Rated input power	CRI	Weight (lb)
--------------------	---------	--------------	--------------	-------------------	-----	-------------

#### WE-EF LIGHTING USA, LLC

410-D Keystone Drive, 15086 Warrendale, PA 15086 - Phone: +1 724 742 0030  
customersupport.usa@we-ef.com - <https://we-ef.com/us>

Subject to technical changes and errors. - Generated on 11/23/2024