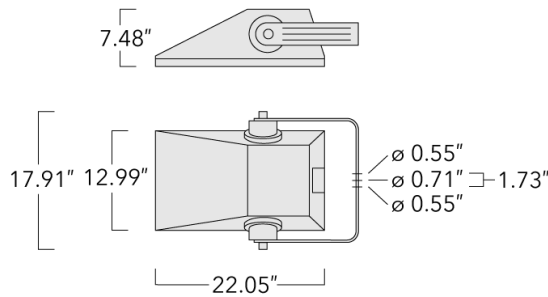


FLA740 LED

Street and Area Lighting



Description

IP66. Class I. IK08. Marine-grade, die-cast aluminum alloy. 5CE superior corrosion protection including PCS hardware. Silicone CCG® Controlled Compression Gasket. Safety glass lens, hinged. CAD-optimized optics for superior illumination and glare control. Integral driver in thermally separated compartment. OLC® One LED Concept. Factory-installed LED circuit board. 0-10V Dimming comes standard with luminaire. Protractor scale for accurate aiming from 0° to 15° above horizontal.

Recommended mounting height 10-30 ft, depending on lamp type selected.

Specify product with 7 Digit product code - Finish Color. Accessories, such as mounting, optical, and electrical, must be specified separately.

Example: XXX-XXXX-9004 (Black)
+ XXX-XXXX (Accessory 1)





WE-EF LIGHTING USA, LLC

410-D Keystone Drive, 15086 Warrendale, PA 15086 - Phone: +1 724 742 0030

customersupport.usa@we-ef.com - <https://we-ef.com/us>

Subject to technical changes and errors. - Generated on 10/23/2024

Street and Area Lighting**Specifications****Material description**

Body	Marine-grade, die-cast aluminium alloy
Colors	 RAL9004 Black
	 RAL9007 Grey Metallic
	 RAL9016 White
	 RAL8019 Dark Bronze
Gasket	Silicone rubber gasket
Fasteners	PCS Polymer Coated Stainless Steel Hardware
Ingress protection	IP66
Impact resistance	IK08
Corrosion resistance	5CE
Windage	1.0

Electrical description

Power supply	120-277V / 50-60 Hz
Driver / Ballast	Integral EC electronic converter
Surge protection	Integral 10kV Surge Protector

Additional information

Lifetime	Ta=25°/40° L90B10 > 90000h
BUG Rating	Please see individual Spec Sheets for classification of Backlight, Uplight and Glare.
Listings	ETL, UL-1598, CSA-C22.2#250.0. Suitable for Wet Locations.

WE-EF LIGHTING USA, LLC

410-D Keystone Drive, 15086 Warrendale, PA 15086 - Phone: +1 724 742 0030

customersupport.usa@we-ef.com - <https://we-ef.com/us>

Subject to technical changes and errors. - Generated on 10/23/2024

FLA740 LED

Street and Area Lighting

Options

Light distribution



[S65] Type III Medium



[R65] Type IV Medium



[A60] Type IV Very Short

Color temperature



3000 K



4000 K



4000K

Nominal Watt

0 W

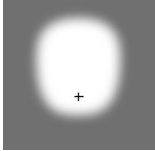
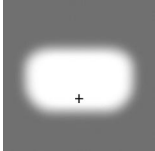
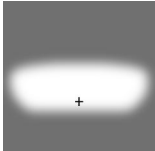
WE-EF LIGHTING USA, LLC

410-D Keystone Drive, 15086 Warrendale, PA 15086 - Phone: +1 724 742 0030

customersupport.usa@we-ef.com - <https://we-ef.com/us>

Subject to technical changes and errors. - Generated on 10/23/2024

Configurations

Light distribution	Part ID	Light source	Rated lumens	Rated input power	CRI	Weight (lb)
[A60] Type IV Very Short 	147-0683	LED-24/72W / 1050 mA - 3000 K	7709.6	81 W	80	21.16
	147-0684	LED-24/72W / 1050 mA - 4000 K	8068.2	81 W	80	16.31
	147-0701	LED-18/54W / 1050 mA - 3000 K	5782.2	59 W	80	21.16
	147-0702	LED-18/54W / 1050 mA - 4000 K	6051.1	59 W	80	21.16
	147-0713	LED-18/36W / 700 mA - 3000 K	3899.6	41 W	80	21.16
	147-0714	LED-18/36W / 700 mA - 4000 K	4168.6	41 W	80	21.16
	147-0725	LED-24/48W / 700 mA - 3000 K	5199.5	54 W	80	21.16
	147-0726	LED-24/48W / 700 mA - 4000 K	5558.1	54 W	80	21.16
[R65] Type IV Medium 	147-0681	LED-24/72W / 1050 mA - 3000 K	7534	81 W	80	16.31
	147-0682	LED-24/72W / 1050 mA - 4000 K	7884.5	81 W	80	16.31
	147-0699	LED-18/54W / 1050 mA - 3000 K	5650.5	59 W	80	16.31
	147-0700	LED-18/54W / 1050 mA - 4000 K	5913.3	59 W	80	16.31
	147-0711	LED-18/36W / 700 mA - 3000 K	3810.8	41 W	80	16.31
	147-0712	LED-18/36W / 700 mA - 4000 K	4073.6	41 W	80	16.31
	147-0723	LED-24/48W / 700 mA - 3000 K	5081.1	54 W	80	16.31
	147-0724	LED-24/48W / 700 mA - 4000 K	5431.5	54 W	80	16.31
[S65] Type III Medium 	147-0679	LED-24/72W / 1050 mA - 3000 K	8269.6	81 W	80	21.16
	147-0680	LED-24/72W / 1050 mA - 4000 K	8654.2	81 W	80	21.16
	147-0697	LED-18/54W / 1050 mA - 3000 K	6202.2	59 W	80	21.16
	147-0698	LED-18/54W / 1050 mA - 4000 K	6490.7	59 W	80	21.16
	147-0709	LED-18/36W / 700 mA - 3000 K	4182.9	41 W	80	21.16
	147-0710	LED-18/36W / 700 mA - 4000 K	4471.4	41 W	80	21.16
	147-0721	LED-24/48W / 700 mA - 3000 K	5577.2	54 W	80	21.16
	147-0722	LED-24/48W / 700 mA - 4000 K	5961.8	54 W	80	21.16

WE-EF LIGHTING USA, LLC

410-D Keystone Drive, 15086 Warrendale, PA 15086 - Phone: +1 724 742 0030

customersupport.usa@we-ef.com - <https://we-ef.com/us>

Subject to technical changes and errors. - Generated on 10/23/2024

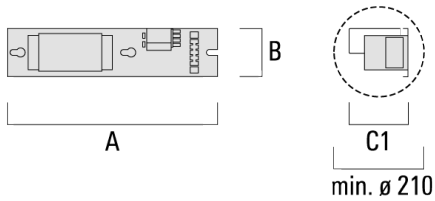
FLA740 LED

Street and Area Lighting

Electrical Accessories

Platine

Description	Part ID	A	B	C1	Weight (lb)
PT110 and 2 fuses E14 for HI 2000W, ~400V/9,60-11,30A	400-0180[komp]500	145	160	13.60	



WE-EF LIGHTING USA, LLC

410-D Keystone Drive, 15086 Warrendale, PA 15086 - Phone: +1 724 742 0030

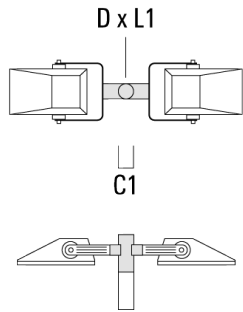
customersupport.usa@we-ef.com - <https://we-ef.com/us>

Subject to technical changes and errors. - Generated on 10/23/2024

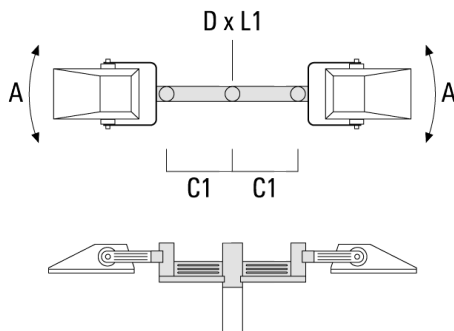
Mounting Accessories

Floodlight mounting bracket TA

Description	Part ID	A	C1	D x L1	L	Weight (lb)	D x S
TA2 Mounting bracket, double (Ø 3 x 8)	147-0024		5.12	3 x 8	2.99	4.2 lbs	76 x 200



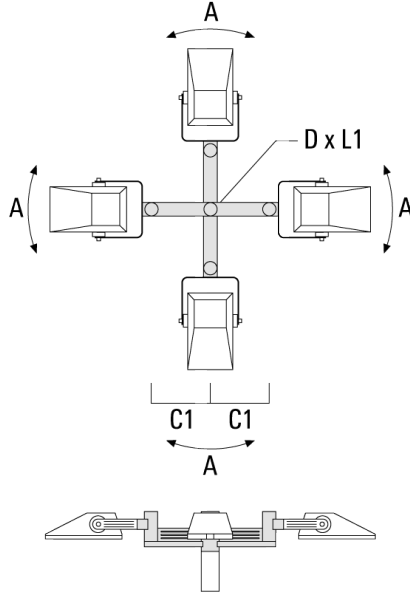
TA2-L Mounting bracket, double (Ø 3 x 8)	147-0105	±90°	16.54	3 x 8	2.99	35.49	76 x 200
--	----------	------	-------	-------	------	-------	----------



FLA740 LED

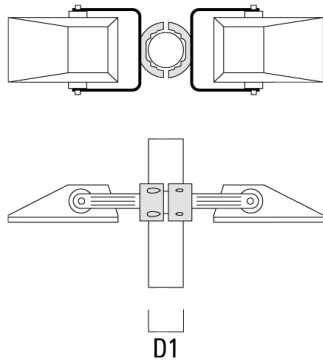
Street and Area Lighting

Description	Part ID	A	C1	D x L1	L	Weight (lb)	D x S
TA4-L Mounting bracket, quad (Ø 3.5 x 8)	147-0465	±9°	27.17	3.5 x 8	3.5	49.82	89x200



Pole clamp TS

Description	Part ID	D1	Weight (lb)	D
TS2-740 Pole clamp, double (Ø 3"-3.5")	147-6902	3-3.5"	3.09 lbs	76-89



WE-EF LIGHTING USA, LLC

410-D Keystone Drive, 15086 Warrendale, PA 15086 - Phone: +1 724 742 0030

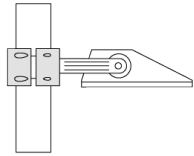
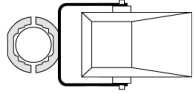
customersupport.usa@we-ef.com - <https://we-ef.com/us>

Subject to technical changes and errors. - Generated on 10/23/2024

FLA740 LED

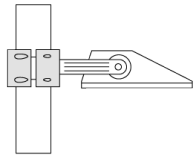
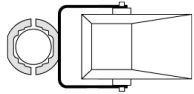
Street and Area Lighting

Description	Part ID	D1	Weight (lb)	D
TS1-740 Pole clamp, single (Ø 3"-3.5")	147-0137	3-3.5"	3.09 lbs	76-89



D1

TS1-740 Pole clamp, single (Ø 4.5"-5.25")	147-6909	4.5-5.25"	3.53 lbs	114-133
---	----------	-----------	----------	---------



D1

WE-EF LIGHTING USA, LLC

410-D Keystone Drive, 15086 Warrendale, PA 15086 - Phone: +1 724 742 0030

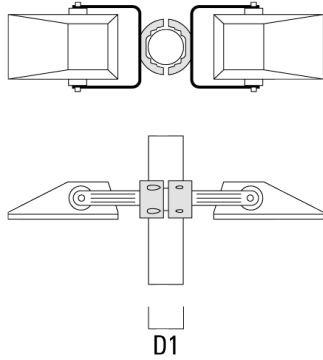
customersupport.usa@we-ef.com - <https://we-ef.com/us>

Subject to technical changes and errors. - Generated on 10/23/2024

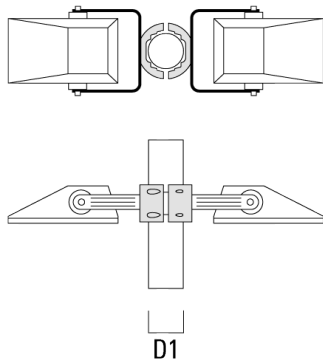
FLA740 LED

Street and Area Lighting

Description	Part ID	D1	Weight (lb)	D
TS2-740 Pole clamp, double (Ø 4.0"-4.5")	147-6906	4-4.5"	3.53 lbs	102-114



TS2-740 Pole clamp, double (Ø 4.5"-5.25")	147-6910	4.5-5.25"	3.53 lbs	114-133
---	----------	-----------	----------	---------



Surface Mount Canopy SMC

WE-EF LIGHTING USA, LLC

410-D Keystone Drive, 15086 Warrendale, PA 15086 - Phone: +1 724 742 0030

customersupport.usa@we-ef.com - <https://we-ef.com/us>

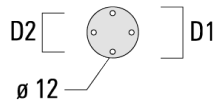
Subject to technical changes and errors. - Generated on 10/23/2024

FLA740 LED



Street and Area Lighting

Description	Part ID	D1	D2	M1	Weight (lb)
SMC-740	147-6914	9.06	7.68	0.47	6.0 lbs



WE-EF LIGHTING USA, LLC

410-D Keystone Drive, 15086 Warrendale, PA 15086 - Phone: +1 724 742 0030

customersupport.usa@we-ef.com - <https://we-ef.com/us>

Subject to technical changes and errors. - Generated on 10/23/2024

Street and Area Lighting**Optical Accessories****Light shield**

Description	Part ID	Additional information
LS180-[A60]	430-0038	Light shield LS180 to greatly reduce or eliminate light pollution. PA injection moulded component, black matt. Suitable for asymmetric light distribution [A60].
LS180	430-0029	Glare Shield for backlight spill. Glare Shield factory-installed or available as retrofit kit. Suitable for [S60], [S65], [S70], [R65], [P65] lenses. Must be specified at time of ordering.

WE-EF LIGHTING USA, LLC

410-D Keystone Drive, 15086 Warrendale, PA 15086 - Phone: +1 724 742 0030

customersupport.usa@we-ef.com - <https://we-ef.com/us>

Subject to technical changes and errors. - Generated on 10/23/2024

FLA740 LED

Street and Area Lighting

WE-EF LIGHTING USA, LLC

410-D Keystone Drive, 15086 Warrendale, PA 15086
Phone: +1 724 742 0030

customersupport.usa@we-ef.com
<https://we-ef.com/us>

Subject to technical changes and errors.
Generated on 10/23/2024