






Description

Tunable White. IP66, Class I. IK07. Marine-grade, die-cast aluminium alloy. 5CE superior corrosion protection including PCS hardware. Silicone CCG[®] Controlled Compression Gasket. Safety glass lens. One cable gland. Second gland for through-wiring on request. Integral EC electronic converter, thermally separated. CAD-optimised optics for superior illumination and glare control. OLC[®] One LED Concept. Factory-installed LED circuit board with Tunable White Technology. DALI Interface.

Projectors**Specifications****Material description**

| | |
|----------------------|---|
| Body | Marine-grade, die-cast aluminium alloy |
| Lens | Safety glass lens |
| Colours |  RAL9004 Signal black  RAL9006 White aluminium  RAL9007 Grey aluminium  RAL7016 Anthracite grey  RAL9016 Traffic white |
| Gasket | Silicone CCG® Controlled Compression Gasket |
| Fasteners | PCS Polymer Coated Stainless Steel Hardware |
| Ingress protection | IP66 |
| Impact resistance | IK07 |
| Corrosion resistance | 5CE |
| Windage | 0.030 m ² |

Electrical description

| | |
|------------------|---------------------|
| Power supply | 220-240V / 50-60 Hz |
| Driver / Ballast | DALI |
| Power factor | > 0.9 |

Additional information

| | |
|-------------------------|------------------------|
| Lifetime | Ta=25° L90B10 > 90000h |
| Energy efficiency class | E (Lichtquelle) |

FLC220-TW LED

Projectors

Options

Light distribution

Colour temperature

Nominal Watt



symmetric, wide beam [B]

2200-6000K

0 W



symmetric, narrow beam [E]

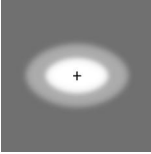
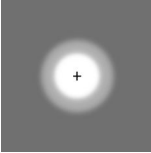

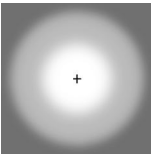


symmetric, medium beam [M]



linear spread, narrow beam [E]

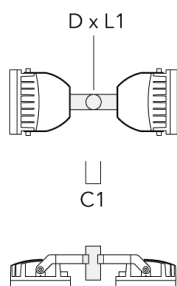
Configurations

| Light distribution | Part ID | Light source | Rated lumens | Rated input power | CRI | Weight (kg) |
|--|-------------------|-------------------------|--------------|-------------------|-----|-------------|
| linear spread, narrow beam [E]  | 139-2043+139-2036 | LED-6/22W - 2200-6000 K | 1893.9 | 26 W | 80 | 4.30 |
| symmetric, medium beam [M]  | 139-2042 | LED-6/22W - 2200-6000 K | 2027.4 | 26 W | 80 | 4.30 |
| symmetric, narrow beam [E]  | 139-2043 | LED-6/22W - 2200-6000 K | 2080.3 | 26 W | 80 | 4.30 |
| symmetric, wide beam [B]  | 139-2041 | LED-6/22W - 2200-6000 K | 2043.5 | 26 W | 80 | 4.30 |

Mounting Accessories

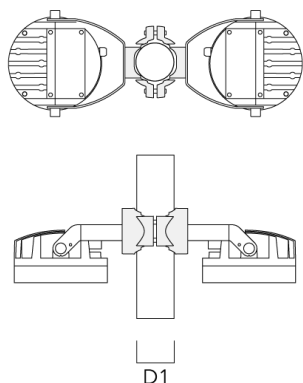
Floodlight mounting bracket TA

| Description | Part ID | C1 | D × L1 | Weight (kg) | D × S |
|--|----------|-----|----------|-------------|----------|
| TA2 Mounting bracket, double* (Ø 76 x 200) | 147-0024 | 130 | 76 x 200 | 1.90 | 76 x 200 |



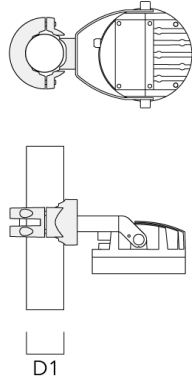
Pole clamp PC

| Description | Part ID | D1 | Weight (kg) |
|---|----------|-------|-------------|
| PC2 76-89/60 Pole clamp, double (Ø 76-89) | 139-2703 | 76-89 | 1.00 |

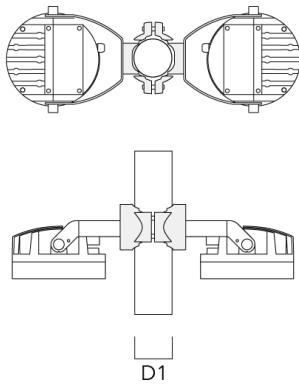


Projectors

| Description | Part ID | D1 | Weight (kg) |
|---|----------|-------|-------------|
| PC1 76-89/60 Pole clamp, single (Ø 76-89) | 139-2702 | 76-89 | 1.00 |

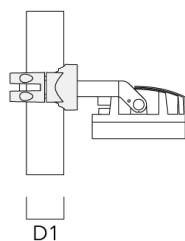
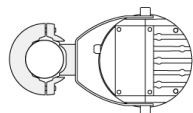


| | | | |
|---|----------|---------|------|
| PC2 102-114/60 Pole clamp, double (Ø 102-114) | 139-2707 | 102-114 | 1.20 |
|---|----------|---------|------|

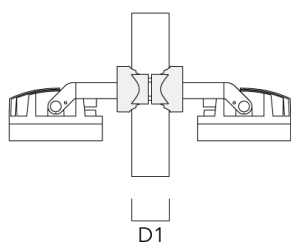
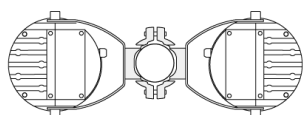


Projectors

| Description | Part ID | D1 | Weight (kg) |
|--|----------|---------|-------------|
| PC1 102-114/60 Pole clamp, single (Ø 102-114) | 139-2706 | 102-114 | 1.20 |

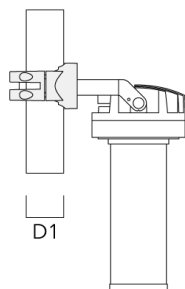
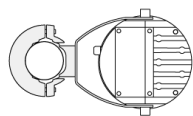


| | | | |
|--|----------|---------|------|
| PC2 114-133/60 Pole clamp, double (Ø 114-133) | 139-2709 | 114-133 | 1.40 |
|--|----------|---------|------|

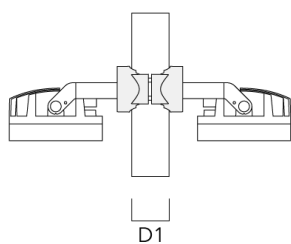
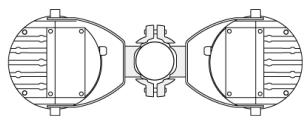


Projectors

| Description | Part ID | D1 | Weight (kg) |
|--|----------|---------|-------------|
| PC1 114-133/60 Pole clamp, single (Ø 114-133) | 139-2708 | 114-133 | 1.40 |

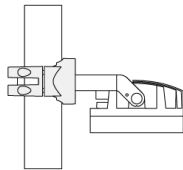
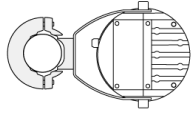


| | | | |
|--|----------|--------|------|
| PC2 82-109/60 Pole camp, double (Ø 82-109) | 139-2705 | 82-109 | 1.10 |
|--|----------|--------|------|



Projectors

| Description | Part ID | D1 | Weight (kg) |
|--|----------|--------|-------------|
| PC1 82-109/60 Pole camp, single (Ø 82-109) | 139-2704 | 82-109 | 1.10 |



D1

Control

DMX Wireless Repeater

| Description | Part ID |
|-----------------------|----------|
| DMX Wireless Repeater | 400-0477 |



DMX Wireless Transceiver

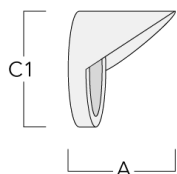
| Description | Part ID |
|--------------------------|----------|
| DMX Wireless Transceiver | 400-0476 |



Optical Accessories

Glare shield

| Description | Part ID | A | C1 |
|---------------|----------|-----|-----|
| ES-FLC220-LED | 139-1986 | 125 | 190 |



Snoot

| Description | Part ID | A | C1 |
|---------------|----------|-----|-----|
| ET-FLC220-LED | 139-1987 | 125 | 190 |

