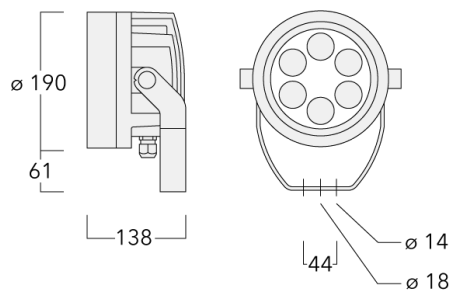








### Description

IP66. Classe I. IK07. Corps en fonte d'aluminium. Visserie inox avec traitement PCS. Protection contre la corrosion 5CE. Joint silicone. Verre de sécurité. LED Tunable White Technology. Interface DALI.



**Projecteurs****Spécifications****Description du matériel**

---

Corps	Corps en fonte d'aluminium, visserie inox avec traitement PCS
Lentille	Verre de sécurité
Couleurs	 RAL9004 Noir de sécurité  RAL9007 Aluminium gris  RAL7016 Gris anthracite  RAL9016 Blanc signalisation
Joint	Joint silicone CCG®
Visserie	PCS Inox avec recouvrement polymère
IP	IP66
IK	IK07
Protection contre la corrosion	5CE
Surface exposée au vent	0.030 m <sup>2</sup>

---

**Description électrique**

---

Driver	DALI
--------	------

---




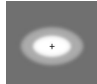
**Informations complémentaires**

---

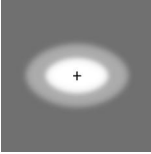
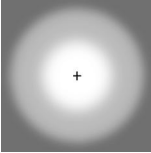


Durée de vie	Ta=25° L90B10 > 90000h
Classe d'efficacité énergétique	E

---

### Options

Distribution de la lumière	Température de couleur	Données en sortie de luminaire
 faisceau symétrique, extensif [B]	2200-6000K	0 W
 faisceau symétrique, intensif [E]		
 faisceau symétrique, médium [M]		
 faisceau ovalisante, intensif [E]		

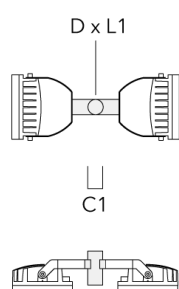
### Configurations

Distribution de la lumière	Référence	Source lumineuse	Rated lumens	Rated input power	IRC	Poids (kg)
faisceau ovalisante, intensif [E] 	139-2043+139-2036	LED-6/22W - 2200-6000 K	1893.9	26 W	80	4.30
faisceau symétrique, extensif [B] 	139-2041	LED-6/22W - 2200-6000 K	2043.5	26 W	80	4.30
faisceau symétrique, intensif [E] 	139-2043	LED-6/22W - 2200-6000 K	2080.3	26 W	80	4.30
faisceau symétrique, médium [M] 	139-2042	LED-6/22W - 2200-6000 K	2027.4	26 W	80	4.30

### Accessoires d'installation

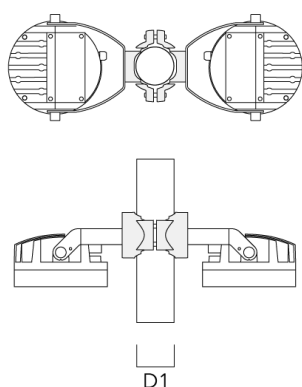
#### Traverse pour mâts

Description	Référence	C1	D x L1	Poids (kg)	D x S
TA2 traverse double (Ø 76 x 200)	147-0024	130	76 x 200	1.90	76 x 200



#### Collier pour mâts PC

Description	Référence	D1	Poids (kg)
PC2 76-89/60 collier double pour tube (Ø 76-89)	139-2703	76-89	1.00

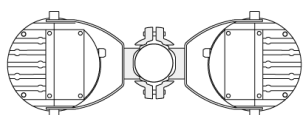


## Projecteurs

Description	Référence	D1	Poids (kg)
PC1 76-89/60 collier simple (Ø 76-89)	139-2702	76-89	1.00

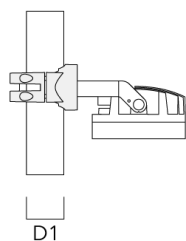
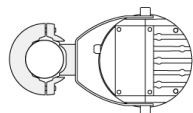


PC2 102-114/60 collier double pour tube (Ø 102-114)	139-2707	102-114	1.20
---	----------	---------	------

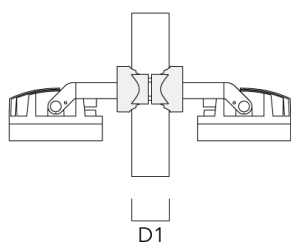
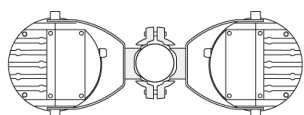


## Projecteurs

Description	Référence	D1	Poids (kg)
PC1 102-114/60 collier simple (Ø 102-114)	139-2706	102-114	1.20

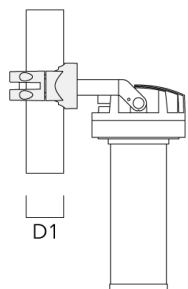


PC2 114-133/60 collier double pour tube (Ø 114-133)	139-2709	114-133	1.40
---	----------	---------	------

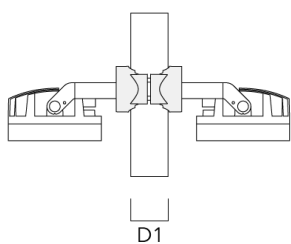
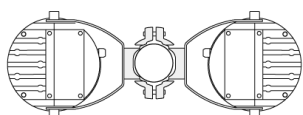


## Projecteurs

Description	Référence	D1	Poids (kg)
PC1 114-133/60 collier simple (Ø 144-133)	139-2708	114-133	1.40



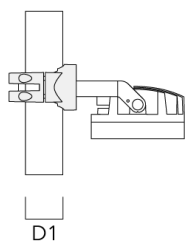
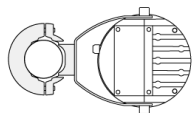
PC2 82-109/60 collier double pour tube (Ø 82-109)	139-2705	82-109	1.10
---	----------	--------	------





**Projecteurs**

Description	Référence	D1	Poids (kg)
PC1 82-109/60 collier simple (Ø 82-109)	139-2704	82-109	1.10



**Control****DMX Wireless Repeater**

---

Description	Référence
DMX Wireless Repeater	400-0477

---



---

**DMX Wireless Transceiver**

---

Description	Référence
DMX Wireless Transceiver	400-0476

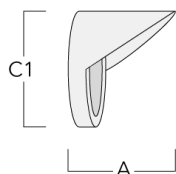
---



### Accessoires Optiques

#### Visière

Description	Référence	A	C1
ES-FLC220-LED	139-1986	125	190



#### Canon anti-éblouissement

Description	Référence	A	C1
ET-FLC220-LED	139-1987	125	190

