

Description

IP65. IK08; IK10 on request with polycarbonate lens. Marine-grade, die-cast aluminum alloy. 5CE superior corrosion protection including PCS hardware. Silicone CCG® Controlled Compression Gasket. Safety glass lens. Two cable entries. CAD-optimized optics for superior illumination and glare control. Integral driver. OLC® One LED Concept. Advanced thermal management protects LEDs while optimizing lumens output.

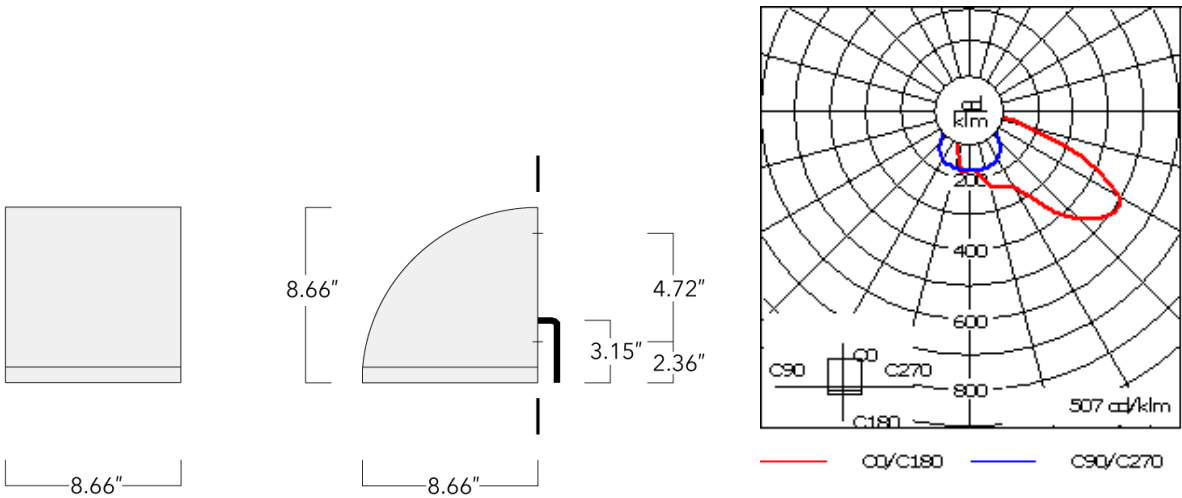
Luminaire can be mounted for up or down lighting.

Specify product with 7 Digit product code - Finish Color. Accessories, such as mounting, optical, and electrical, must be specified separately.
Example: XXX-XXXX-9004 (Black)
+ XXX-XXXX (Accessory 1)

| | |
|--------------------|------------------------------|
| Weight | 14.60 lb |
| Light distribution | [A60] Type IV Very Short |
| Light source | LED-12/24W / 700 mA - 2700 K |
| CRI | 80 |
| Power supply | electronic gear |
| LEDs | 12 |
| Rated input power | 27 W |

| Nominal Lumen (lm) | |
|--------------------|------|
| LED Lumen | 270 |
| Total Lumen | 3240 |
| Tj | 85 |

| Delivered lumens (lm) | |
|-----------------------|--------|
| LED Lumen | 204.1 |
| Total Lumen | 2449.2 |
| Ta | 25 |



Specifications
Material description

| | |
|----------------------|---|
| Body | Luminaire body and lens frame constructed in die cast aluminum. |
| Lens | Tempered glass lens. |
| Colors | <div><div></div> RAL9004 Black</div> <div><div></div> RAL9007 Grey Metallic</div> <div><div></div> RAL9016 White</div> <div><div></div> RAL8019 Dark Bronze</div> |
| Gasket | Silicone rubber gasket |
| Fasteners | PCS polymer coated stainless steel |
| Ingress protection | IP65 |
| Impact resistance | IK07 |
| Corrosion resistance | 5CE |

Electrical description

| | |
|------------------|---|
| Power supply | Integral [ECG] electronic driver 120V-277V. 0-10V dimmable, to be specified with order. |
| Driver / Ballast | Integral EC electronic converter |

132-0642

OLV334 LED



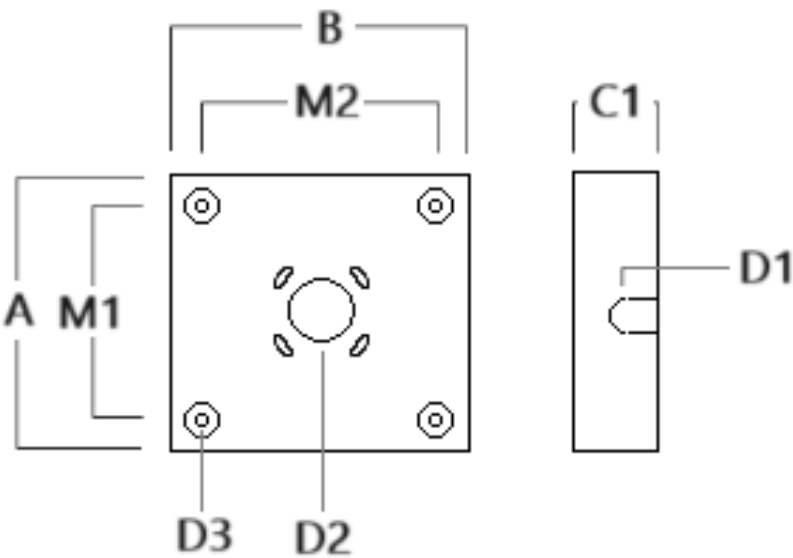
Additional information

| | |
|----------|---|
| Lifetime | Ta=25°/40° L90B10 > 90000h |
| Listings | ETL listed. Suitable for wet locations. |

Mounting Accessories

Surface Collar

| Description | Part ID | A | B | C1 | D1 | D2 | Weight (lb) |
|----------------------|----------|------|------|------|----|----|-------------|
| OLV33_Surface Collar | 132-6001 | 8.69 | 8.63 | 1.75 | ø1 | ø2 | 1.12 |



Electrical Accessories

Emergency Lighting Package

| Description | Part ID | Additional information |
|---------------------------------------|----------|---|
| OLV33_ LED Emergency Lighting Package | 132-6900 | Emergency battery backup operating for a minimum of 90 minutes, at full power, when main power is lost. |