



Description

IP66. Class I. IK07. Marine-grade, die-cast aluminum alloy. 5CE superior corrosion protection including PCS hardware. Silicone CCG® Controlled Compression Gasket. Safety glass lens. Two cable entries. CAD-optimized optics for superior illumination and glare control. Integral driver. OLC® One LED Concept. Factory-installed LED circuit board. 0-10V Dimming comes standard with luminaire.

Specify product with 7 Digit product code - Finish Color. Accessories, such as mounting, optical, and electrical, must be specified separately.

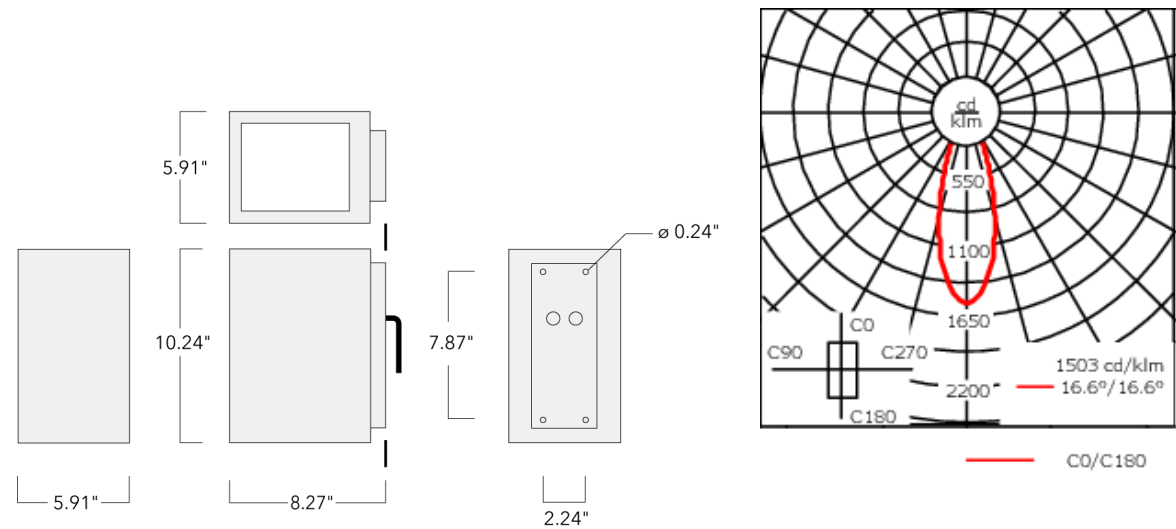
Example: XXX-XXXX-9004 (Black)
+ XXX-XXXX (Accessory 1)

For DarkSky compliant configurations of this product, please find the spec sheet and DarkSky certificate in the library.

Weight	10.80 lb
Light distribution	symmetric, medium beam [M]
Light source	LED-6/26W / 1400 mA - 2700 K
CRI	80
Power supply	electronic gear
LEDs	6
Rated input power	27 W

Nominal Lumen (lm)	
LED Lumen	520
Total Lumen	3120
Tj	85

Delivered lumens (lm)	
LED Lumen	350.5
Total Lumen	2103.2
Ta	25



Specifications
Material description

Table with 2 columns: Component and Description. Rows include Body (Marine-grade, die-cast aluminium alloy), Lens (Safety glass lens), Colors (RAL9004 Black, RAL9007 Grey Metallic, RAL9016 White, RAL8019 Dark Bronze), Gasket (Silicone rubber gasket), Fasteners (PCS hardware), Ingress protection (IP66), Impact resistance (IK07), and Corrosion resistance (5CE).

Electrical description

Table with 2 columns: Component and Description. Rows include Power supply (Integral [ECG] electronic driver 120V-277V. 0-10V dimmable, to be specified with order.) and Driver / Ballast (Standard. Optional DALI version available. To be specified at time of ordering.)

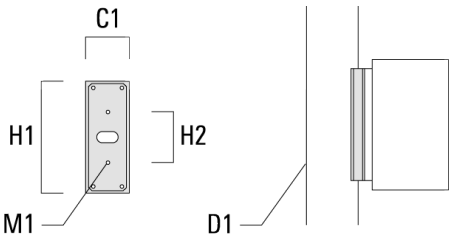
Additional information

Table with 2 columns: Component and Description. Rows include Lifetime (Ta=25°/40° L90B10 > 90000h), BUG Rating (Please see individual Spec Sheets for classification of Backlight, Uplight and Glare.), and Listings (ETL listed. Suitable for wet locations.)

Mounting Accessories

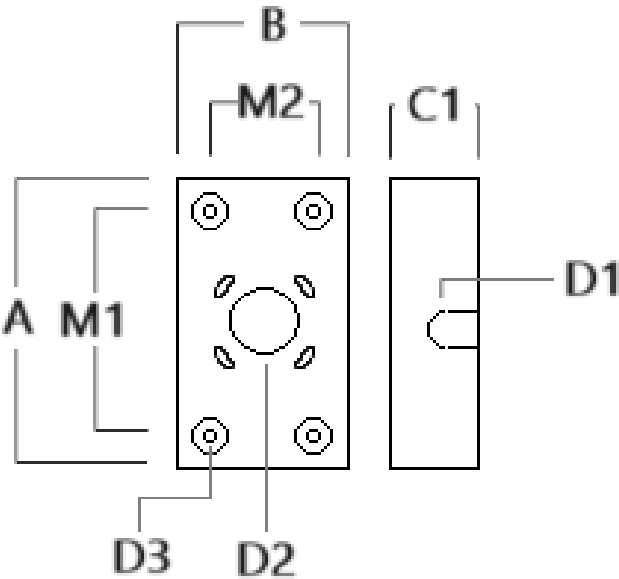
Column fitter

Description	Part ID	C1	D1	H1	H2	M1	Weight (lb)
CF-410/420	131-9140	3.27	≥ 5.51	8.66	3.94	0.24	1.32



Surface Collar

Description	Part ID	A	B	C1	D1	D2	D3	M1	M2
VLS/SLS Surface Collar	131-6004	8.66	3.66	1.75	ø1	ø1.5	ø0.38	6	2



Electrical Accessories

Emergency Lighting Package

Description	Part ID	Additional information
_LS420/430 LED Emergency Lighting Package	131-6900	Emergency battery backup operating for a minimum 90 minutes when power is lost.