

Description

Wild-Light. IP66, Class I or Class II. IK08. Marine-grade, die-cast aluminium alloy. 5CE superior corrosion protection including PCS hardware. CCG® Controlled Compression Gasket. Non-reflective flat safety glass cover, hinged. Luminaire is factory-sealed and does not need to be opened during installation.

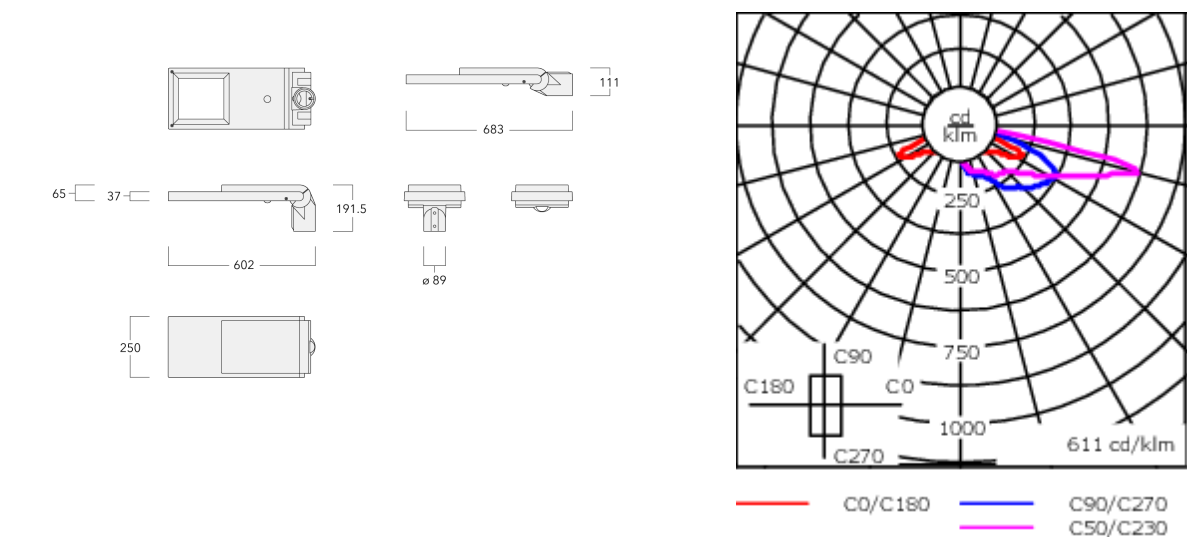
Integral EC electronic converter. DALI interface. CAD-optimised optics for superior illumination and glare control. OLC® One LED Concept.

Suitable for using as post top or side entry version. Recommend to be specified at time of ordering.

Optional spigot adaptor Ø 60 x 100 mm or 42 x 100 mm available; refer to accessory listings.

For other colour configurations available on request.

|                    |                               |
|--------------------|-------------------------------|
| Weight             | 7.00 kg                       |
| Light distribution | rectangular, side throw [R61] |
| Light source       | LED-8/8W/PC Amber             |
| CRI                | 60                            |
| Power supply       | EC                            |
| LEDs               | 8                             |
| Rated input power  | 9.5 W                         |
| Nominal Lumen (lm) |                               |
| LED Lumen          | 110                           |
| Total Lumen        | 880                           |
| Tj                 | 85                            |
| Rated lumens (lm)  |                               |
| LED Lumen          | 64.2                          |
| Total Lumen        | 513.9                         |
| Ta                 | 25                            |



Specifications

Material description

|                      |   |
|----------------------|---|
| Body                 | Marine-grade, die-cast aluminium alloy  |
| Lens                 | Non-reflective safety glass lens  |
| Colours              | <div><div></div> RAL9004 Signal black</div> <div><div></div> RAL9007 Grey aluminium</div> <div><div></div> RAL7016 Anthracite grey</div> <div><div></div> RAL9016 Traffic white</div> |
| Gasket               | CCG® Controlled Compression Gasket  |
| Fasteners            | PCS Polymer Coated Stainless Steel Hardware   |
| Ingress protection   | IP66  |
| Impact resistance    | IK08  |
| Corrosion resistance | 5CE   |
| Windage              | 0.146 m <sup>2</sup>  |

Electrical description

|                  |   |
|------------------|---|
| Driver / Ballast | Integral electronic converter with DALI interface |
| Power factor     | > 0.9   |
| Surge protection | 6/6kV, optional 10kV                              |

Additional information

|          |                        |
|----------|------------------------|
| Lifetime | Ta=25° L90B10 > 90000h |
|----------|------------------------|

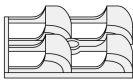
Optical Accessories

Backlight shield

| Description            | Part ID        | Additional information  |
|------------------------|----------------|---|
| Backlight shield LS180 | 102-0959-24LED | Glare Shield for backlight spill. Suitable for [S65] [R60] lenses.<br>Glare Shield factory-installed or available as retrofit kit. Must be specified at time of ordering. |



|                        |                |   |
|------------------------|----------------|---|
| Backlight shield LS180 | 102-0395-24LED | Glare Shield for backlight spill. Suitable for [S61], [S66], [R61], [P66] [Q66], [A61] lenses.<br>Glare Shield factory-installed or available as retrofit kit. Must be specified at time of ordering. |
|------------------------|----------------|---|



## Control

### R2C Ready to Connect

| Description                          | Part ID  |
|--------------------------------------|----------|
| R2C Ready to Connect (top)           | 430-0019 |
| R2C Ready to Connect (below)         | 430-0027 |
| R2C Ready to Connect (top and below) | 430-0032 |

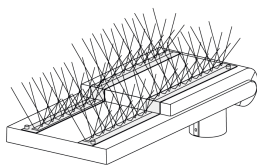
### Wild-Light Eco Step Dim® Advanced

| Description                       | Part ID  | Additional information  |
|-----------------------------------|----------|---|
| Wild-Light Eco Step Dim® Advanced | 430-0034 | <p>Fully automatic independent dimming pre-set, without additional installation effort, Example: Starting the night with warm white (3000 K from 20:00 to 22:00), reduced to biodiversity friendly in the heart of the night (2200 K from 22:00 to 06:00), and returning back to warm white in the early morning (3000 K from 06:00 to 07:00).</p> <p>This is the easiest to implement solution to create a nature-friendly lighting scenario, as no additional installations or external controls are needed. All pre-settings are made in the two LED drivers. The dimming values are programmed into the driver during the production of the luminaires. An optional link with sunrise and sunset times can mean additional optimisation. A customer-specific configuration is possible.</p> <p>The settings can be changed directly on the LED driver at any time (NFC). The necessary tool is standardised and can also be obtained from WE-EF as an optional extra.</p> |

Mounting Accessories

Bird deterrent

| Description       | Part ID  |
|-------------------|----------|
| Bird deterrent BD | 430-0015 |



Adaptor

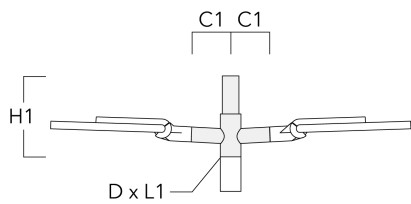
| Description    | Part ID  |
|----------------|----------|
| Adaptor AFL100 | 102-0392 |



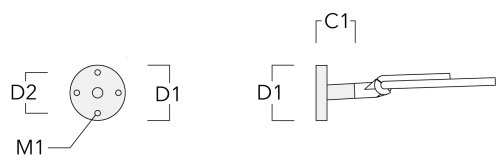
AFL120-WL LED

Wall and pole brackets RE

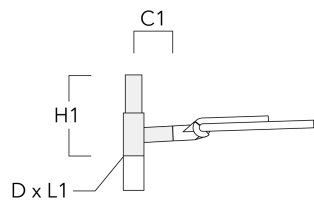
| Description                  | Part ID  | C1  | D1 | D2 | D × L1   | H1  | M1 | Weight (kg) |
|------------------------------|----------|-----|----|----|----------|-----|----|-------------|
| Pole bracket RE2-540, double | 111-0043 | 200 |    |    | 76 x 130 | 550 |    | 5.30        |



|                      |          |     |     |     |  |    |      |  |
|----------------------|----------|-----|-----|-----|--|----|------|--|
| Wall bracket RE0-540 | 111-0084 | 180 | 230 | 195 |  | 12 | 3.20 |  |
|----------------------|----------|-----|-----|-----|--|----|------|--|

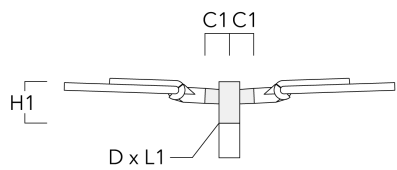


| Description                  | Part ID  | C1  | D1 | D2 | D × L1   | H1  | M1 | Weight (kg) |
|------------------------------|----------|-----|----|----|----------|-----|----|-------------|
| RE1-540 Pole bracket, single | 111-0042 | 200 |    |    | 76 x 130 | 500 |    | 4.60        |



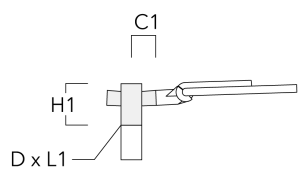
Pole brackets RF

| Description                  | Part ID  | C1  | D × L1  | H1  | Weight (kg) |
|------------------------------|----------|-----|---------|-----|-------------|
| Pole bracket RF2-540, double | 111-0047 | 200 | 76 x 80 | 200 | 3.30        |



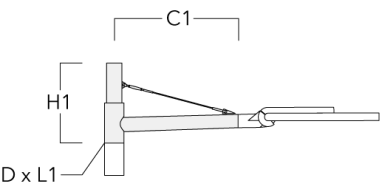
AFL120-WL LED

| Description                  | Part ID  | C1  | D × L1  | H1  | Weight (kg) |
|------------------------------|----------|-----|---------|-----|-------------|
| RF1-540 Pole bracket, single | 111-0046 | 200 | 76 x 80 | 200 | 2.60        |



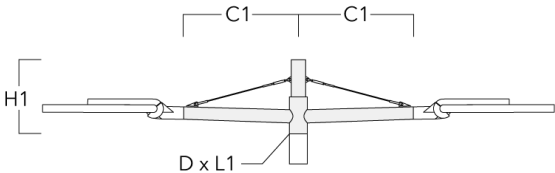
Wall and pole brackets RX

| Description                  | Part ID  | C1   | D1 | D2 | D × L1   | H1  | H2 | M1 | M2 | Weight (kg) |
|------------------------------|----------|------|----|----|----------|-----|----|----|----|-------------|
| RX1-540 Pole bracket, single | 111-0054 | 1000 |    |    | 76 x 130 | 550 |    |    |    | 6.8         |





| Description                  | Part ID  | C1   | D1 | D2 | D × L1   | H1  | H2 | M1 | M2 | Weight (kg) |
|------------------------------|----------|------|----|----|----------|-----|----|----|----|-------------|
| RX2-540 Pole bracket, double | 111-0055 | 1000 |    |    | 76 x 130 | 550 |    |    |    | 9.70        |



|                      |          |      |     |     |  |     |     |    |    |      |
|----------------------|----------|------|-----|-----|--|-----|-----|----|----|------|
| RX0-540 Wall bracket | 111-0086 | 1000 | 140 | 100 |  | 450 | 385 | 30 | 12 | 5.20 |
|----------------------|----------|------|-----|-----|--|-----|-----|----|----|------|

