



Description

IP66. Class I. IK08. Marine-grade, die-cast aluminum alloy. 5CE superior corrosion protection including PCS hardware. Silicone CCG® Controlled Compression Gasket. RFC® Reflection Free Contour main lens. CAD-optimized optics for superior illumination and glare control. Integral driver in thermally separated compartment. OLC® One LED Concept. Factory-installed LED circuit board. 0-10V Dimming comes standard with luminaire. The luminaire is factory-sealed, factory-wired and supplied with 33’ of black, three conductor, flexible SEOW cord for power connection at pole-base hand hole.

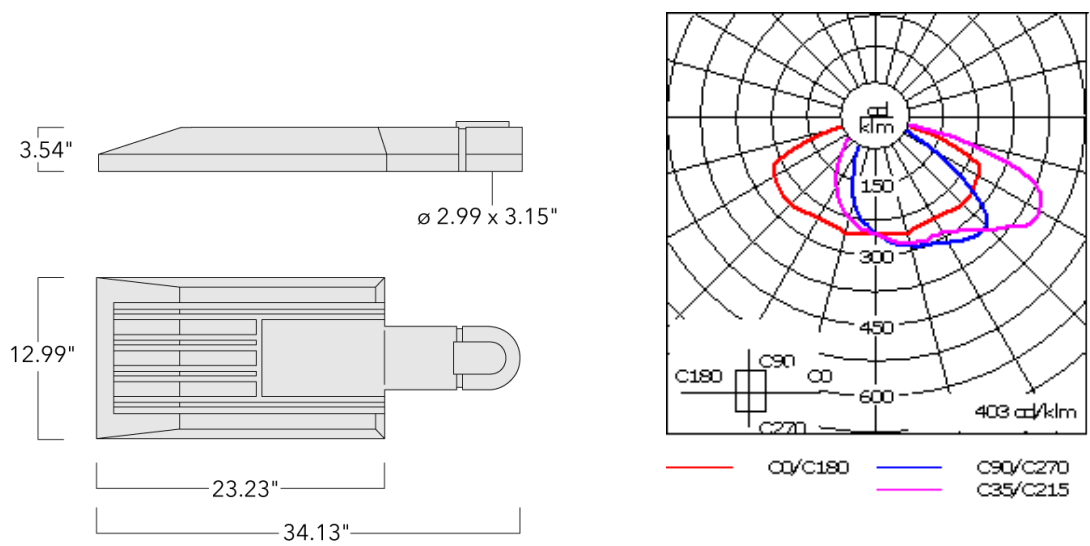
Recommended mounting height 12-40 ft, depending on lamp type selected.

Specify product with 7 Digit product code - Finish Color. Accessories, such as mounting, optical, and electrical, must be specified separately.  
Example: XXX-XXXX-9004 (Black)  
+ XXX-XXXX (Accessory 1)

|                    |                               |
|--------------------|-------------------------------|
| Weight             | 33.07 lb                      |
| Light distribution | [S60] Type III Short          |
| Light source       | LED-24/72W / 1050 mA - 4000 K |
| CRI                | 80                            |
| Power supply       | electronic gear               |
| BUG                | B2 U0 G2                      |
| LEDs               | 24                            |
| Rated input power  | 79 W                          |

| Nominal Lumen (lm) |       |
|--------------------|-------|
| LED Lumen          | 450   |
| Total Lumen        | 10800 |
| Tj                 | 85    |

| Delivered lumens (lm) |        |
|-----------------------|--------|
| LED Lumen             | 401.2  |
| Total Lumen           | 9628.2 |
| Ta                    | 25     |



Specifications  
Material description

|                      |   |
|----------------------|---|
| Body                 | Marine-grade die-cast aluminium alloy   |
| Lens                 | PMMA RFC Reflection Contuor Lens technology   |
| Colors               | <div><div></div> RAL9004 Black</div> <div><div></div> RAL9007 Grey Metallic</div> <div><div></div> RAL9016 White</div> <div><div></div> RAL8019 Dark Bronze</div> |
| Gasket               | Silicone rubber gasket  |
| Fasteners            | PCS Polymer Coated Stainless Steel hardware   |
| Ingress protection   | IP66  |
| Impact resistance    | IK08  |
| Corrosion resistance | 5CE   |
| Windage              | 0.5   |

Electrical description

|                  |   |
|------------------|---|
| Power supply     | Integral [ECG] electronic driver 120V-277V. 0-10V dimmable, to be specified with order. |
| Driver / Ballast | Integral EC electronic converter  |
| Power factor     | > 0.9   |
| Surge protection | In-line bracket 10kV Surge Protector  |

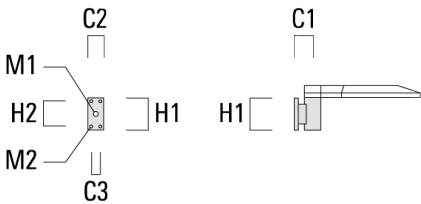
Additional information

|            |   |
|------------|---|
| Lifetime   | Ta=25°/40° L90B10 > 90000h  |
| BUG Rating | Please see individual Spec Sheets for classification of Backlight, Uplight and Glare. |
| Listings   | ETL, UL-1598, CSA-C22.2#250.0. Suitable for Wet Locations.                            |

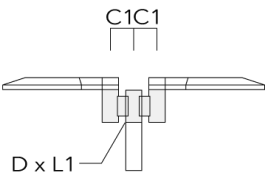
Mounting Accessories

Wall and pole brackets RV

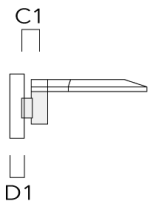
| Description      | Part ID  | Additional information | C1 | C2    | C3    | D1    | D × L1 | H1    | H2   | L | M1   | M2    | Weight (lb) | C   | D | H |
|------------------|----------|------------------------|----|-------|-------|-------|--------|-------|------|---|------|-------|-------------|-----|---|---|
| RV0 Wall bracket | 108-0979 | RV0 Wall bracket       |    | 4.25" | 3.94" | 2.36" |        | 7.87" | 6.3" |   | 1.5" | 0.47" | 4.41        | 108 |   |   |



| Description                 | Part ID  | Additional information | C1 | C2 | C3 | D1 | D × L1 | H1 | H2 | L    | M1 | M2 | Weight (lb) | C   | D  | H   |
|-----------------------------|----------|------------------------|----|----|----|----|--------|----|----|------|----|----|-------------|-----|----|-----|
| RV2-76 Pole bracket, double | 108-0980 | 5.79                   |    |    |    |    | 3 x 4  |    |    | 2.99 |    |    | 10.58       | 147 | 76 | 200 |



|                  |          |       |  |  |  |           |  |  |  |  |  |  |          |     |  |     |
|------------------|----------|-------|--|--|--|-----------|--|--|--|--|--|--|----------|-----|--|-----|
| RV5 Pole bracket | 108-0982 | 4.25" |  |  |  | 3.0"-9.5" |  |  |  |  |  |  | 3.75 lbs | 106 |  | 200 |
|------------------|----------|-------|--|--|--|-----------|--|--|--|--|--|--|----------|-----|--|-----|



Optical Accessories

Light shield

| Description | Part ID  | Additional information  |
|-------------|----------|---|
| LS180-[A60] | 430-0038 | Light shield LS180 to greatly reduce or eliminate light pollution.<br>PA injection moulded component, black matt.<br>Suitable for asymmetric light distribution [A60].                          |
| LS180       | 430-0029 | Glare Shield for backlight spill. Glare Shield factory-installed or available as retrofit kit.<br>Suitable for [S60], [S65], [S70], [R65], [P65] lenses. Must be specified at time of ordering. |