



Description

IP66, Class I or Class II. IK08. Marine-grade die-cast aluminium alloy. 5CE superior corrosion protection + primer including PCS hardware. Silicone CCG® Controlled Compression Gasket. UV stabilised acrylic panel in RFC® technology. Integrated heat sinks. Easy removal and replacement of LED board. DALI. CAD optimised OLC® PMMA lens for superior illumination and glare control. The luminaire is factory-sealed and does not need to be opened during the installation.

PC Amber and 2200 K available on request (to be specified at time of ordering).

Max drive current:

PC Amber - 700 mA

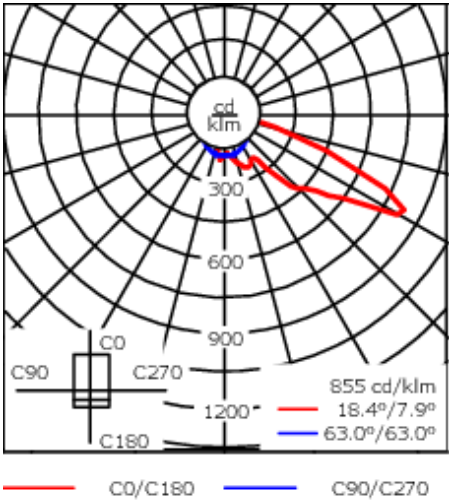
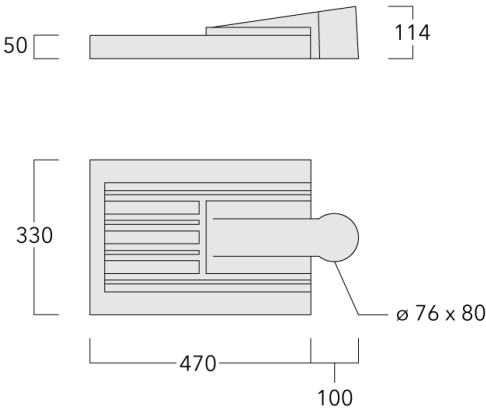
2200 K - 1050 mA (CRI70 only)

Spigot D: 76 x 80 mm (optional 60 x 80 mm).

|                    |                                 |
|--------------------|---------------------------------|
| Weight             | 6.60 kg                         |
| Light distribution | asymmetric, forward throw [A60] |
| Light source       | LED-24/24W / 350 mA - 4000 K    |
| CRI                | 80                              |
| Power supply       | EC                              |
| LEDs               | 24                              |
| Rated input power  | 26.5 W                          |

|                    |      |
|--------------------|------|
| Nominal Lumen (lm) |      |
| LED Lumen          | 170  |
| Total Lumen        | 4080 |
| Tj                 | 85   |

|                   |        |
|-------------------|--------|
| Rated lumens (lm) |        |
| LED Lumen         | 148.6  |
| Total Lumen       | 3566.9 |
| Ta                | 25     |



Specifications  
Material description

|                      |  |
|----------------------|--|
| Body                 | Marine-grade, die-cast aluminium alloy   |
| Lens                 | UV stabilised acrylic panel in RFC™ Reflection Free Contour technology   |
| Colours              | <div><div></div> RAL9004 Signal black</div> <div><div></div> RAL9006 White aluminium</div> <div><div></div> RAL9007 Grey aluminium</div> |
| Gasket               | Silicone CCG® Controlled Compression Gasket  |
| Fasteners            | PCS Polymer Coated Stainless Steel Hardware (unpainted)  |
| Ingress protection   | IP66   |
| Impact resistance    | IK08   |
| Corrosion resistance | 5CE+Primer   |
| Windage              | 0.163 m <sup>2</sup>   |

Electrical description

|                  |  |
|------------------|--|
| Power supply     | 230V / 50 Hz   |
| Driver / Ballast | Integral EC electronic converter. DALI   |
| Power factor     | > 0.9  |
| Surge protection | In-pole surge protection SP10 device supplied. Please refer to WE-EF installation instructions for details. Use suffix +A for Integral surge protection. |

**Additional information**

|          |  |
|----------|--|
| Lifetime | Ta=40° L90B10 > 90000h   |
| Warranty | The product is supplied with 10-year warranty. Please refer to the LED Warranty Statement located on <a href="http://www.we-ef.com">www.we-ef.com</a> for further details. |

Control

Eco Step Dim® Basic

| Description             | Part ID  |
|-------------------------|----------|
| Eco Step Dim® Basic LED | 430-0001 |

Eco Step Dim® Advanced

| Description                | Part ID  |
|----------------------------|----------|
| Eco Step Dim® Advanced LED | 430-0002 |

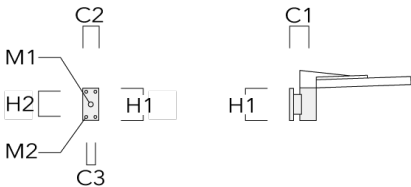
R2C Ready to Connect

| Description                          | Part ID  |
|--------------------------------------|----------|
| R2C Ready to Connect (top)           | 430-0019 |
| R2C Ready to Connect (below)         | 430-0027 |
| R2C Ready to Connect (top and below) | 430-0032 |

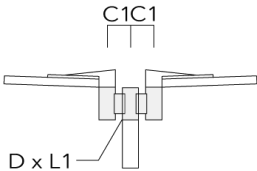
Mounting Accessories

Wall and pole brackets RV

| Description      | Part ID  | Additional information | C1  | C2  | C3 | D1 | D × L1 | H1  | H2  | M1 | M2 | Weight (kg) | C   | D | H |
|------------------|----------|------------------------|-----|-----|----|----|--------|-----|-----|----|----|-------------|-----|---|---|
| RV0 Wall Bracket | 108-0979 | RV0 Wall bracket       | 108 | 100 | 60 |    |        | 200 | 160 | 38 | 12 | 2.00        | 108 |   |   |



|                             |          |  |     |  |  |  |          |  |  |  |  |      |     |    |     |
|-----------------------------|----------|--|-----|--|--|--|----------|--|--|--|--|------|-----|----|-----|
| RV2-76 Pole bracket, double | 108-0980 |  | 147 |  |  |  | 76 x 100 |  |  |  |  | 4.80 | 147 | 76 | 200 |
|-----------------------------|----------|--|-----|--|--|--|----------|--|--|--|--|------|-----|----|-----|



| Description                 | Part ID  | Additional information | C1 | C2 | C3 | D1 | D × L1   | H1 | H2 | M1 | M2 | Weight (kg) | C   | D  | H   |
|-----------------------------|----------|------------------------|----|----|----|----|----------|----|----|----|----|-------------|-----|----|-----|
| RV2-60 Pole bracket, double | 108-0981 | 147                    |    |    |    |    | 60 x 100 |    |    |    |    | 4.80        | 147 | 60 | 200 |

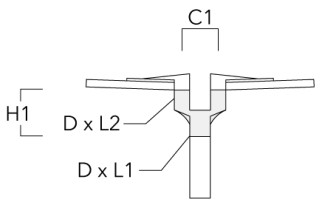


|                  |          |     |  |  |  |        |  |  |  |  |  |      |     |  |     |
|------------------|----------|-----|--|--|--|--------|--|--|--|--|--|------|-----|--|-----|
| RV5 Pole bracket | 108-0982 | 108 |  |  |  | 76-240 |  |  |  |  |  | 1.70 | 106 |  | 200 |
|------------------|----------|-----|--|--|--|--------|--|--|--|--|--|------|-----|--|-----|



Post top fitter AKV

| Description | Part ID  | C1  | D × L1 | D × L2 | H1  | Weight (kg) |
|-------------|----------|-----|--------|--------|-----|-------------|
| AKV2-76     | 300-0053 | 180 | 76x100 | 76x80  | 235 | 1.50        |



Optical Accessories

Light shield

| Description | Part ID  | Additional information   |
|-------------|----------|--|
| LS180-[A60] | 003-4018 | Glare Shield for backlight spill. Glare Shield factory-installed or available as retrofit kit. Suitable for [A60] lenses. Must be specified at time of ordering.                             |
| LS180       | 003-4019 | Glare Shield for backlight spill. Glare Shield factory-installed or available as retrofit kit. Suitable for [S60], [S65], [S70], [R65], [P65] lenses. Must be specified at time of ordering. |