

147-0700

FLA740 LED

we-ef



Description

IP66. Class I. IK08. Marine-grade, die-cast aluminum alloy. 5CE superior corrosion protection including PCS hardware. Silicone CCG® Controlled Compression Gasket. Safety glass lens, hinged. CAD-optimized optics for superior illumination and glare control. Integral driver in thermally separated compartment. OLC® One LED Concept. Factory-installed LED circuit board. 0-10V Dimming comes standard with luminaire. Protractor scale for accurate aiming from 0° to 15° above horizontal.

Recommended mounting height 10-30 ft, depending on lamp type selected.

Specify product with 7 Digit product code - Finish Color. Accessories, such as mounting, optical, and electrical, must be specified separately.

Example: XXX-XXXX-9004 (Black)
+ XXX-XXXX (Accessory 1)

| | |
|--------------------|-------------------------------|
| Weight | 16.31 lb |
| Light distribution | [R65] Type IV Medium |
| Light source | LED-18/54W / 1050 mA - 4000 K |
| CRI | 80 |
| Power supply | electronic gear |
| BUG | B2 U0 G2 |
| LEDs | 18 |
| Rated input power | 59 W |

Nominal Lumen (lm)

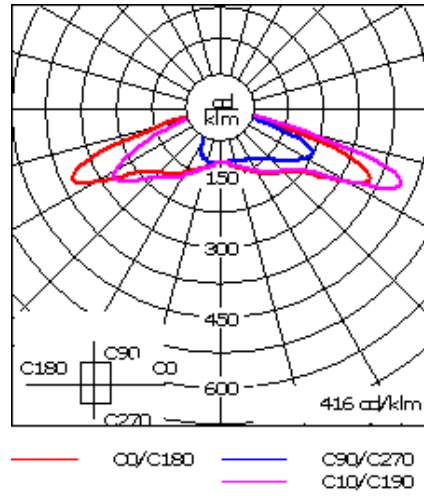
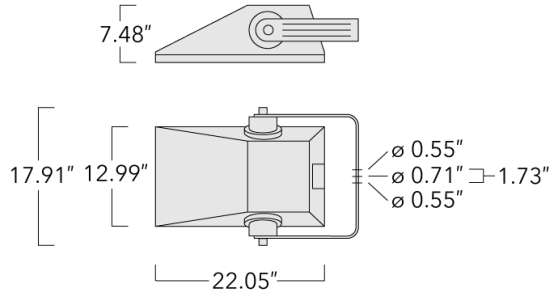
| | |
|-------------|------|
| LED Lumen | 450 |
| Total Lumen | 8100 |
| Tj | 85 |

Delivered lumens (lm)

| | |
|-------------|--------|
| LED Lumen | 328.5 |
| Total Lumen | 5913.3 |
| Ta | 25 |

WE-EF LIGHTING USA, LLC

410-D Keystone Drive, 15086 Warrendale, PA 15086 - Phone: +1 724 742 0030
customersupport.usa@we-ef.com - <https://we-ef.com/us>
Subject to technical changes and errors. - Generated on 04/19/2025



Specifications

Material description

| | |
|----------------------|---|
| Body | Marine-grade, die-cast aluminium alloy |
| Colors | <div style="display: flex; flex-direction: column; gap: 5px;"> <div style="display: flex; align-items: center;"> <div style="width: 20px; height: 10px; background-color: black; margin-right: 5px;"></div> RAL9004 Black </div> <div style="display: flex; align-items: center;"> <div style="width: 20px; height: 10px; background-color: grey; margin-right: 5px;"></div> RAL9007 Grey Metallic </div> <div style="display: flex; align-items: center;"> <div style="width: 20px; height: 10px; background-color: white; margin-right: 5px;"></div> RAL9016 White </div> <div style="display: flex; align-items: center;"> <div style="width: 20px; height: 10px; background-color: darkgrey; margin-right: 5px;"></div> RAL8019 Dark Bronze </div> </div> |
| Gasket | Silicone rubber gasket |
| Fasteners | PCS Polymer Coated Stainless Steel Hardware |
| Ingress protection | IP66 |
| Impact resistance | IK08 |
| Corrosion resistance | 5CE |
| Windage | 1.0 |

Electrical description

| | |
|------------------|----------------------------------|
| Power supply | 120-277V / 50-60 Hz |
| Driver / Ballast | Integral EC electronic converter |
| Surge protection | Integral 10kV Surge Protector |

WE-EF LIGHTING USA, LLC

410-D Keystone Drive, 15086 Warrendale, PA 15086 - Phone: +1 724 742 0030
 customersupport.usa@we-ef.com - <https://we-ef.com/us>
 Subject to technical changes and errors. - Generated on 04/19/2025

147-0700

FLA740 LED

we-ef

Additional information

| | |
|------------|---|
| Lifetime | Ta=25°/40° L90B10 > 90000h |
| BUG Rating | Please see individual Spec Sheets for classification of Backlight, Uplight and Glare. |
| Listings | ETL, UL-1598, CSA-C22.2#250.0. Suitable for Wet Locations. |

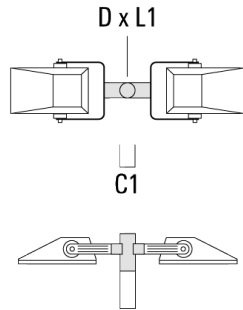
WE-EF LIGHTING USA, LLC

410-D Keystone Drive, 15086 Warrendale, PA 15086 - Phone: +1 724 742 0030
customersupport.usa@we-ef.com - <https://we-ef.com/us>
Subject to technical changes and errors. - Generated on 04/19/2025

Mounting Accessories

Floodlight mounting bracket TA

| Description | Part ID | A | C1 | D x L1 | L | Weight (lb) | D x S |
|--|----------|---|------|--------|------|-------------|----------|
| TA2 Mounting bracket, double (Ø 3 x 8) | 147-0024 | | 5.12 | 3 x 8 | 2.99 | 4.2 lbs | 76 x 200 |



| | | | | | | | |
|--|----------|------|-------|-------|------|-------|----------|
| TA2-L Mounting bracket, double (Ø 3 x 8) | 147-0105 | ±90° | 16.54 | 3 x 8 | 2.99 | 35.49 | 76 x 200 |
|--|----------|------|-------|-------|------|-------|----------|



WE-EF LIGHTING USA, LLC

410-D Keystone Drive, 15086 Warrendale, PA 15086 - Phone: +1 724 742 0030

customersupport.usa@we-ef.com - <https://we-ef.com/us>

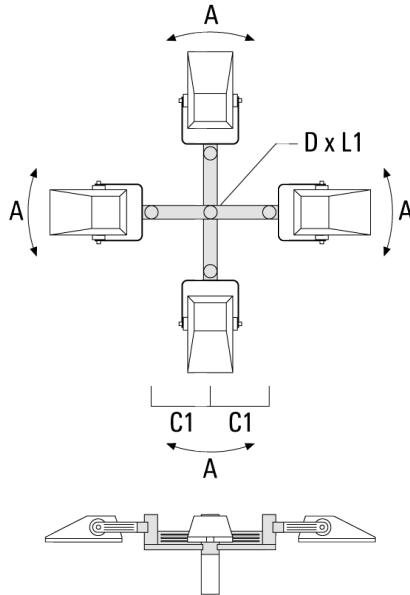
Subject to technical changes and errors. - Generated on 04/19/2025

147-0700

we-ef

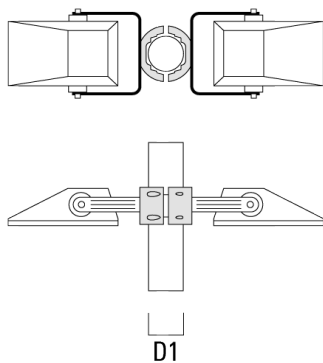
FLA740 LED

| Description | Part ID | A | C1 | D x L1 | L | Weight (lb) | D x S |
|--|----------|-----|-------|---------|-----|-------------|--------|
| TA4-L Mounting bracket, quad (Ø 3.5 x 8) | 147-0465 | ±9° | 27.17 | 3.5 x 8 | 3.5 | 49.82 | 89x200 |



Pole clamp TS

| Description | Part ID | D1 | Weight (lb) | D |
|--|----------|--------|-------------|-------|
| TS2-740 Pole clamp, double (Ø 3"-3.5") | 147-6902 | 3-3.5" | 3.09 lbs | 76-89 |



WE-EF LIGHTING USA, LLC

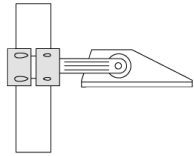
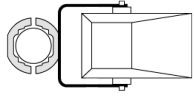
410-D Keystone Drive, 15086 Warrendale, PA 15086 - Phone: +1 724 742 0030
customersupport.usa@we-ef.com - <https://we-ef.com/us>
Subject to technical changes and errors. - Generated on 04/19/2025

147-0700

we-ef

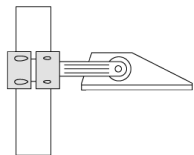
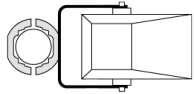
FLA740 LED

| Description | Part ID | D1 | Weight (lb) | D |
|--|----------|--------|-------------|-------|
| TS1-740 Pole clamp, single (Ø 3"-3.5") | 147-0137 | 3-3.5" | 3.09 lbs | 76-89 |



D1

| | | | | |
|---|----------|-----------|----------|---------|
| TS1-740 Pole clamp, single (Ø 4.5"-5.25") | 147-6909 | 4.5-5.25" | 3.53 lbs | 114-133 |
|---|----------|-----------|----------|---------|



D1

WE-EF LIGHTING USA, LLC

410-D Keystone Drive, 15086 Warrendale, PA 15086 - Phone: +1 724 742 0030

customersupport.usa@we-ef.com - <https://we-ef.com/us>

Subject to technical changes and errors. - Generated on 04/19/2025

147-0700

FLA740 LED

we-ef

| Description | Part ID | D1 | Weight (lb) | D |
|--|----------|--------|-------------|---------|
| TS2-740 Pole clamp, double (Ø 4.0"-4.5") | 147-6906 | 4-4.5" | 3.53 lbs | 102-114 |



| | | | | |
|---|----------|-----------|----------|---------|
| TS2-740 Pole clamp, double (Ø 4.5"-5.25") | 147-6910 | 4.5-5.25" | 3.53 lbs | 114-133 |
|---|----------|-----------|----------|---------|



WE-EF LIGHTING USA, LLC

410-D Keystone Drive, 15086 Warrendale, PA 15086 - Phone: +1 724 742 0030
customersupport.usa@we-ef.com - <https://we-ef.com/us>

Subject to technical changes and errors. - Generated on 04/19/2025

147-0700

we-ef

FLA740 LED

Surface Mount Canopy SMC

| Description | Part ID | D1 | D2 | M1 | Weight (lb) |
|-------------|----------|------|------|------|-------------|
| SMC-740 | 147-6914 | 9.06 | 7.68 | 0.47 | 6.0 lbs |



WE-EF LIGHTING USA, LLC

410-D Keystone Drive, 15086 Warrendale, PA 15086 - Phone: +1 724 742 0030
customersupport.usa@we-ef.com - <https://we-ef.com/us>

Subject to technical changes and errors. - Generated on 04/19/2025

147-0700

FLA740 LED

we-ef

Optical Accessories

Light shield

| Description | Part ID | Additional information |
|-------------|----------|---|
| LS180-[A60] | 430-0038 | Light shield LS180 to greatly reduce or eliminate light pollution. PA injection moulded component, black matt. Suitable for asymmetric light distribution [A60]. |
| LS180 | 430-0029 | Glare Shield for backlight spill. Glare Shield factory-installed or available as retrofit kit. Suitable for [S60], [S65], [S70], [R65], [P65] lenses. Must be specified at time of ordering. |

WE-EF LIGHTING USA, LLC

410-D Keystone Drive, 15086 Warrendale, PA 15086 - Phone: +1 724 742 0030
customersupport.usa@we-ef.com - <https://we-ef.com/us>

Subject to technical changes and errors. - Generated on 04/19/2025