

we-ef

WE-EF LIGHTING USA LLC

410-D Keystone Drive
Warrendale, PA 15086
USA

Tel +1 724 742 0030

Fax +1 724 742 0035

info.usa@we-ef.com

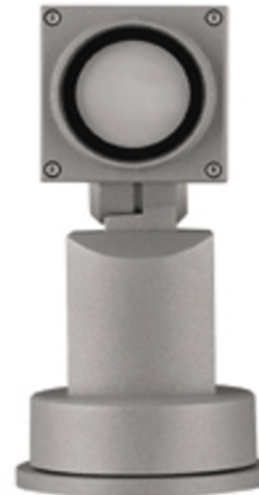
www.we-ef.com

we-ef

WE-EF LIGHTING USA LLC

Installation and Maintenance
Instructions for Flood Lights

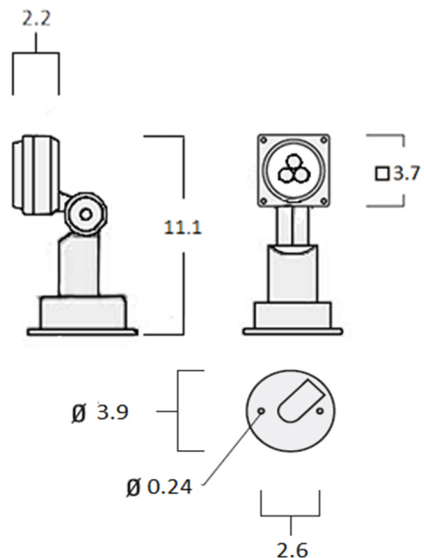
FLD111 LED



Technical specifications are subject to change
© WE-EF 2013

Installation and Maintenance Instructions for Inground Uplights series:

FLD111



Light source:

3 LED - 6W

This product should be installed in accordance with the applicable installation code by a person familiar with the construction and operation of the product and the hazards involved. Be sure the electrical supply is off prior to installation. Ensure the luminaire and lens are clear of dirt and debris.

Attention: The housing L containing the LED light source is factory-sealed and does not need to be opened during installation.

Installation Procedure

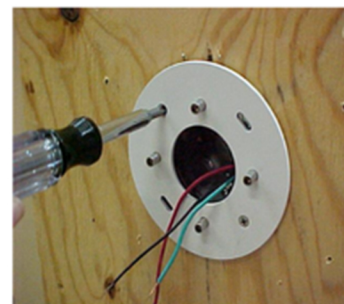
- 1) Open the carton and remove the Luminaire assembly.
- 2) Remove the mounting plate assembly from the back of the housing by loosening the socket head set screw at the base of the fixture.
- 3) Loosen the (4) M5 screws inside the mounting cup to release the mounting plate.
- 4) Use the flat head screws provided to attach the mounting plate to the recessed 4" octagon box provided by others.
- 5) Reattach the mounting cup using the M5 socket head cap screws loosened in step #3.
- 6) Check that the electrical supply conforms with the ratings shown on the fixture labels and leads extending from the fixture. Make the electrical connections.
- 7) Stuff the wiring connections into the junction box and "Slip" the fixture base over the mounting flange assembly.
- 8) Rotate the fixture assembly to the desired orientation. Insure that the flange assembly is fully engaged and that no wires or support cables are trapped.
- 9) Tighten the set screw at the base of the fixture.
- 10) LED circuit boards are factory installed. Luminaire head does not need to be opened during installation.
- 11) Loosen socket head screw at knuckle to adjust the head aiming angle as required.



2)



3)



4)



5)



7)



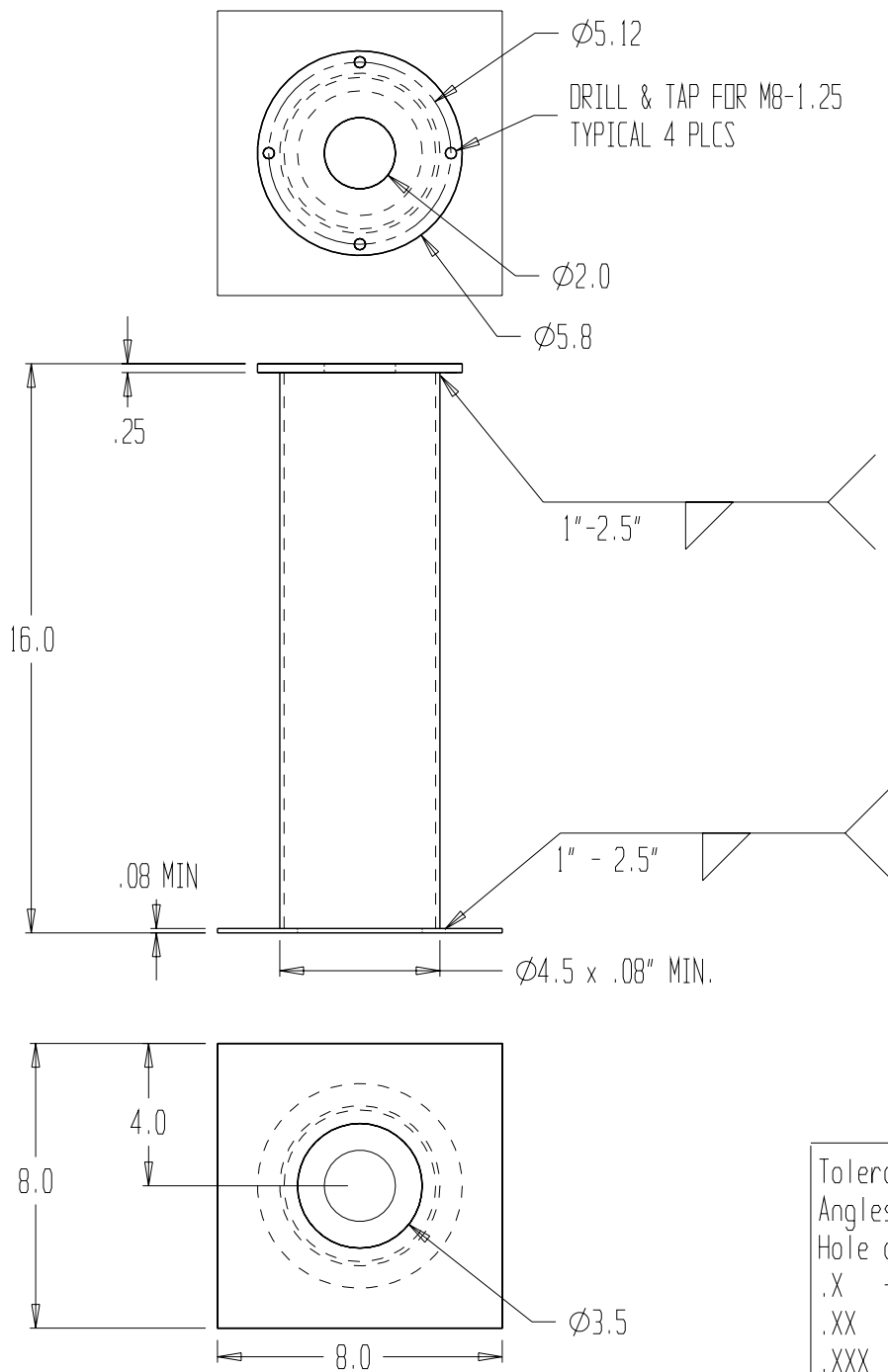
9)



11)

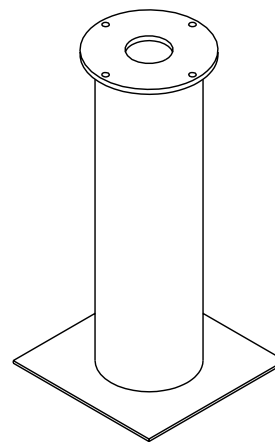
Maintenance:


Apart from cleaning the outside of the luminaire, no special maintenance is necessary.



NOTES:

- 1) MAT'L: STEEL
- 2) FINISH: HOT DIPPED GALVANIZED
- 3) NO ZINC IN THREADED HOLES



	Revision description	Date
we-ef	WE-EF LIGHTING USA, LLC	
	Bldg. 203 Overlook Dr.	Ph. (412) 749-1600
	Sewickley, PA 15143	Fax (412) 749-1670
	Title: PLANTED ROOT 300-0461	
	Drawn by: CAC	Drawing # Part ID #
Date: 01/30/07	665-9302	
Checked by:		

Tolerances:
Angles +/- 5 deg.
Hole dia. +/- .03"
.X +/- .050"
.XX +/- .030"
.XXX +/- .015"