



WE-EF LEUCHTEN

Installation and Maintenance Instructions

Projector

RAIL66 version

FLD121 #6 LED

FLD131 #6 LED

Space frame version

FLD121 #7 LED

FLD131 #7 LED



Do not open during installation

This product is factory-sealed.
Refer to the instructions contained in this document for details.



Surge Protection

This product features built-in surge protection circuitry in compliance with applicable standards.

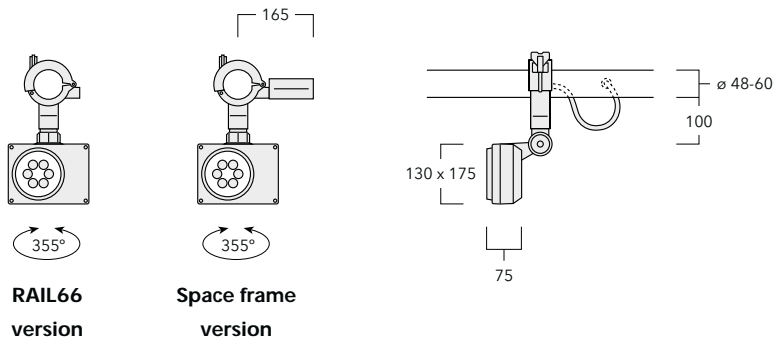
For comprehensive protection of a luminaire installation against lightning and electrical surges, it is essential to cover mains supply and data input lines at the distribution board level, by using respective primary (Type 1) and secondary (Type 2) surge arrestors in compliance with EN61643-11/ IEC61643-1.

Warning

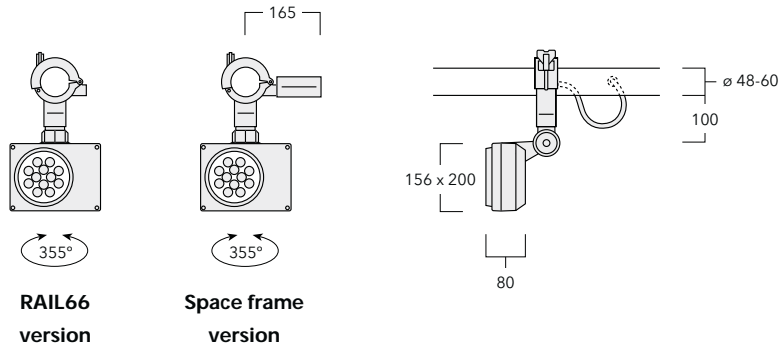
Ensure that all required surge protection measures are in place and activated prior to luminaire installation. Also, disconnect luminaires before operating high-power devices such as, for example, electrical arc welders.

Projector

FLD121



FLD131



IP66, Class I, $t_a = 40^{\circ}\text{C}$

Light Source

LED

Maintenance

Apart from cleaning the product's exterior surfaces, no special maintenance work is required.

Do not use high-pressure cleaners.

In case of component failure due to abnormal circumstances or at end of life, replacement must be carried out by a suitably qualified and trained professional.

Warning: Do not open luminaire while mains supply is switched on.

Installation

The product must be installed and maintained by a suitably qualified professional in compliance with latest building/construction and/or electrical regulations and relevant legislation.

Warning: Switch off mains electrical supply prior to installing and connecting the luminaire.

Notice: If the luminaire is modified by anybody other than the original manufacturer, then the warranty will no longer be valid and shall become the full responsibility of the modifying person/organisation. Claims based on defects attributable to improper installation and/or application, and the consequences thereof, are excluded.

Attention: The luminaire is factory-sealed and does not need to be opened during installation.

The installation on site must comply with local and/or national health and safety regulations.

Installation Procedure

Installation - RAIL66 version

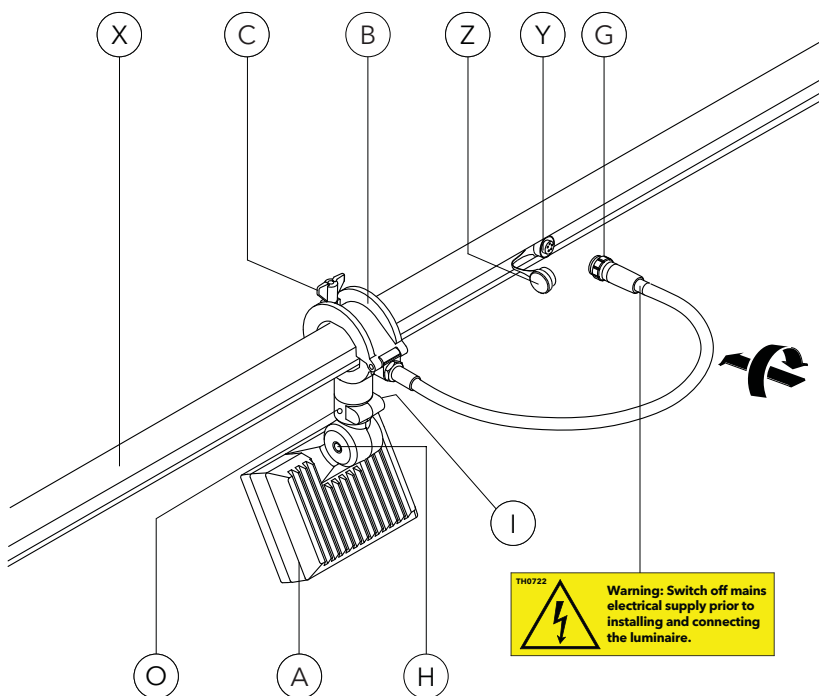
Prior to installing the luminaire, mount and connect the selected RAIL66 mounting system in accordance with relevant installation instructions

- 1) Switch off mains electrical supply.
- 2) Check that rating shown on luminaire label conforms with mains electrical supply.
- 3) Determine desired position of luminaire **A** on rail **X**, dependent on aiming requirements and proximity to a suitable mains outlet **Y**.
- 4) Attach clamp **B** to rail **X**. Tighten wingnut **C**.
- 5) Remove protective cover **Z** from mains outlet **Y**. Insert in-line connector **G** and tighten.
Attention: On any mains outlet **Y'** that is not used, protective cover **Z'** must remain firmly secured. Check and ensure proper fit and tightness.
- 6) Loosen screws **H** and **I** slightly. Aim luminaire in desired direction, tighten screws **H** and **I**. Tighten set screw **O**.

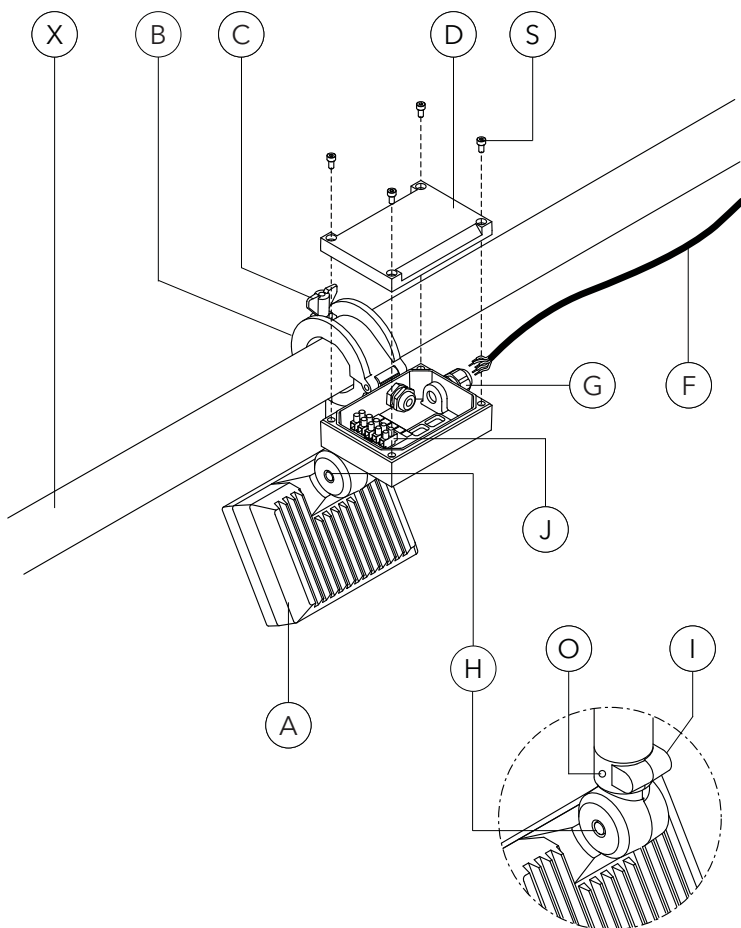
Installation - Space frame version

Suitable for space frame diameter 48-60 mm.

- 1) Switch off mains electrical supply.
- 2) Determine desired position of luminaire **A** on space frame **X**, dependent on aiming requirements.
- 3) Attach clamp **B** to space frame **X**. Tighten wingnut **C**.
- 4) Detach gear box cover **D** by loosening screws **S**.
- 5) Check that rating shown on luminaire label conforms with mains electrical supply.
- 6) Feed mains supply cable **F** through cable gland **G** (Fig. I).
- 7) Connect mains supply leads to respective terminals in terminal connector **J** (N = Neutral, L1 = Phase, \oplus = Earthing). Tighten cable gland **G**. For 1-10 V analogue dimming interface, connect main supply leads to respective terminals in terminal connector **J** (N = Neutral, L = Phase, \oplus = Earthing) and (D+, D- = external 1-10 V dimming device). See Fig. II. Tighten cable gland **G**.
- 8) Reposition gear box cover **D** and secure in position by tighten screws **S**.
- 9) Loosen screws **H** and **I** slightly. Aim luminaire in desired direction, tighten screws **H** and **I**. Tighten set screw **O**.



RAIL66 version



Space frame version



Fig. I. Feed mains supply cable through cable gland



www.we-ef.com

WE-EF LEUCHTEN

Germany

Tel +49 5194 909 0

Fax +49 5194 909 299

info.germany@we-ef.com

WE-EF LUMIERE

France

Tel +33 4 74 99 14 44

Fax +33 4 74 99 14 40

info.france@we-ef.com

WE-EF SWITZERLAND

Switzerland

Tel +41 22 752 49 94

Fax +41 22 752 49 74

info.switzerland@we-ef.com

WE-EF LIGHTING

Thailand

Tel +66 2 738 9610

Fax +66 2 175 2174

info.asiapacific@we-ef.com

WE-EF LIGHTING

Australia

Tel +61 3 8587 0444

Fax +61 3 8587 0499

info.australia@we-ef.com

WE-EF LIGHTING

United States of America

Tel +1 724 742 0030

Fax +1 724 742 0035

info.usa@we-ef.com

TO9212W0823 © WE-EF 2023

Technical specifications are
subject to change.