



www.we-ef.com

WE-EF LEUCHTEN

Germany
Tel +49 5194 909-0
Fax +49 5194 909-299
Info.germany@we-ef.com

WE-EF HELVETICA

Switzerland
Tel +41 22 752 49 94
Fax +41 22 752 49 74
Info.switzerland@we-ef.com

WE-EF LIGHTING

United Kingdom
Tel +44 115 989 0319
Fax +44 115 989 0539
Info.uk@we-ef.com

WE-EF LIGHTING

Thailand
Tel +66 2 738 9610-14
Fax +66 2 175 2174
Info.asiapacific@we-ef.com

WE-EF LUMIERE

France
Tel +33 4 74 99 14 44
Fax +33 4 74 99 14 40
Info.france@we-ef.com

WE-EF ILLUMINAZIONE

Italy
Tel +39 029 0092354
Info.italy@we-ef.com

WE-EF LIGHTING

United States of America
Tel +1 724 742 0030
Fax +1 724 742 0035
Info.usa@we-ef.com

WE-EF LIGHTING

Australia
Tel +61 3 8587 0444
Fax +61 3 8587 0499
Info.australia@we-ef.com



WE-EF LEUCHTEN
Installation & Maintenance
Instructions

Projector

FLD121/FLD131 #1 LED



T09210W0413 © WE-EF 2013

Technical specifications are subject to change.

Projector LED

<p>FLD121 #1</p>	<p>FLD131 #1</p>
-------------------------	-------------------------

Light source

LED

Maintenance

Apart from cleaning the outside of the luminaire, no special maintenance is necessary.


IP66, Class I, ta = 40°C

Mounting Accessories

<p>145-9535 Flat surface fitter</p>	<p>145-9536 Column fitter</p>
--------------------------------------------	--------------------------------------

Installation

The product must be installed and maintained by a suitably qualified person in compliance with the latest applicable regulations and relevant legislation.

The minimum distance of an object to be illuminated must be observed (see illustration  inside FLD131 but FLD121 doesn't require a minimum distance).

Claims based on defects attributable to improper installation, application, operation and/or any modification carried out by the purchaser or third parties, and the consequences thereof, are excluded.

Important: The luminaire is factory-sealed and does not need to be opened during installation.

Installation Procedure

1) Installation method 1 for flat surface fitter

1.1 Switch off mains electrical supply.

1.2 Detach strain relief clip **K** out of flat surface fitter **B**. **Important:** Keep strain relief clip **K** for locking cable later. (item 1.6 in this installation instruction)

1.3 Feed cable **C** from luminaire **A** through pivot **I** and hole **L** of flat surface fitter **B**.

1.4 Determine positions for two fixing screws **D**. Drill relevant holes **E** and insert heavy duty wall plugs **F**. Insert and tighten screws **D**. **Caution:** Make sure not to damage any electric cable, water pipe or other devices while drilling holes.

1.5 Release screw **M** on slipfitter **H** (do not turn it out) until the splipfitter is split out slightly. Connect luminaire **A** with flat surface fitter **B** by sliding slipfitter **H** over pivot **I**, while pulling cable **C** through hole **L** and turning luminaire **A** towards object to be illuminated. Ensure slipfitter **H** is properly seated on pivot **I**, then tighten screw **M** firmly.

1.6 Clamp strain relief clip **K** on the cable **C** and press into the hole **L** of flat surface fitter **B**. Ensure the strain relief clip **K** is properly placed in position to lock the cable. (fig.I)

1.7 Check that rating shown on luminaire label conforms with mains electrical supply.

1.8 Mains supply cable **C** to be connected to incoming supply using terminations supplied by others.

1.9 Loosen screw **N** slightly. Then aim luminaire in desired direction and tighten screw **N** firmly. Tighten set screw **O**.

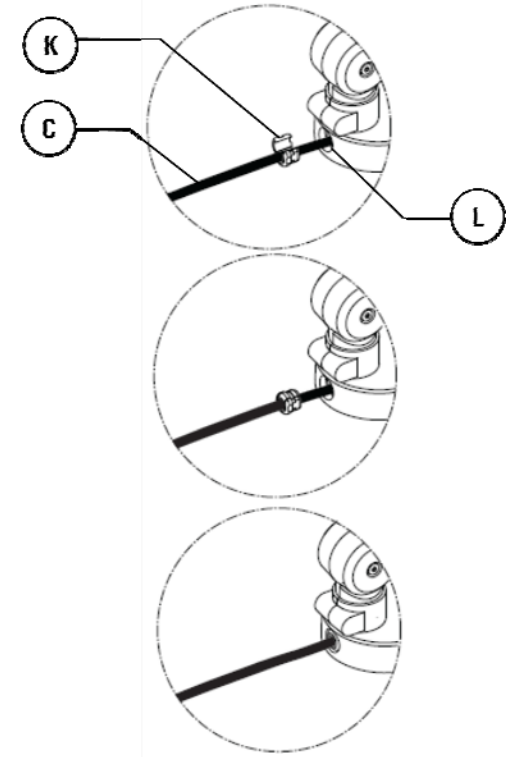


Fig. I Strain relief clip locking

2) Installation method 2 for column fitter
Suitable for column diameter ≥ 76 mm.
Service door on column has to be provided for cable termination (maximum 1.5 m from column fitter mounting position).

2.1 Switch off mains electrical supply.

2.2 Determine position for fixing screws **D** and cable entry hole **F**. Drill relevant holes **E** and **F** on column **X**. Ensure cable entry hole **F** is of sufficient diameter to feed cable **C** from luminaire **A** through.

2.3 Set and fix column fitter **B** in position. Insert and tighten screws **D** firmly.

2.4 Feed cable **C** from luminaire **A** through pivot **I** and cable entry hole **F** on column **X**, while connecting luminaire **A** with column fitter **B** by sliding slip fitter **H** over pivot **I**. Turn luminaire **A** towards object to be illuminated. Ensure the slip fitter **H** is properly seated on pivot **I**, then tighten screw **M** firmly.

2.5 Check that rating shown on luminaire label conforms with mains electrical supply.

2.6 Mains supply cable **C** to be connected to incoming supply using terminations supplied by others.

2.7 Loosen screw **N** slightly. Then aim luminaire in desired direction and tighten screw **N** firmly. Tighten set screw **O**.

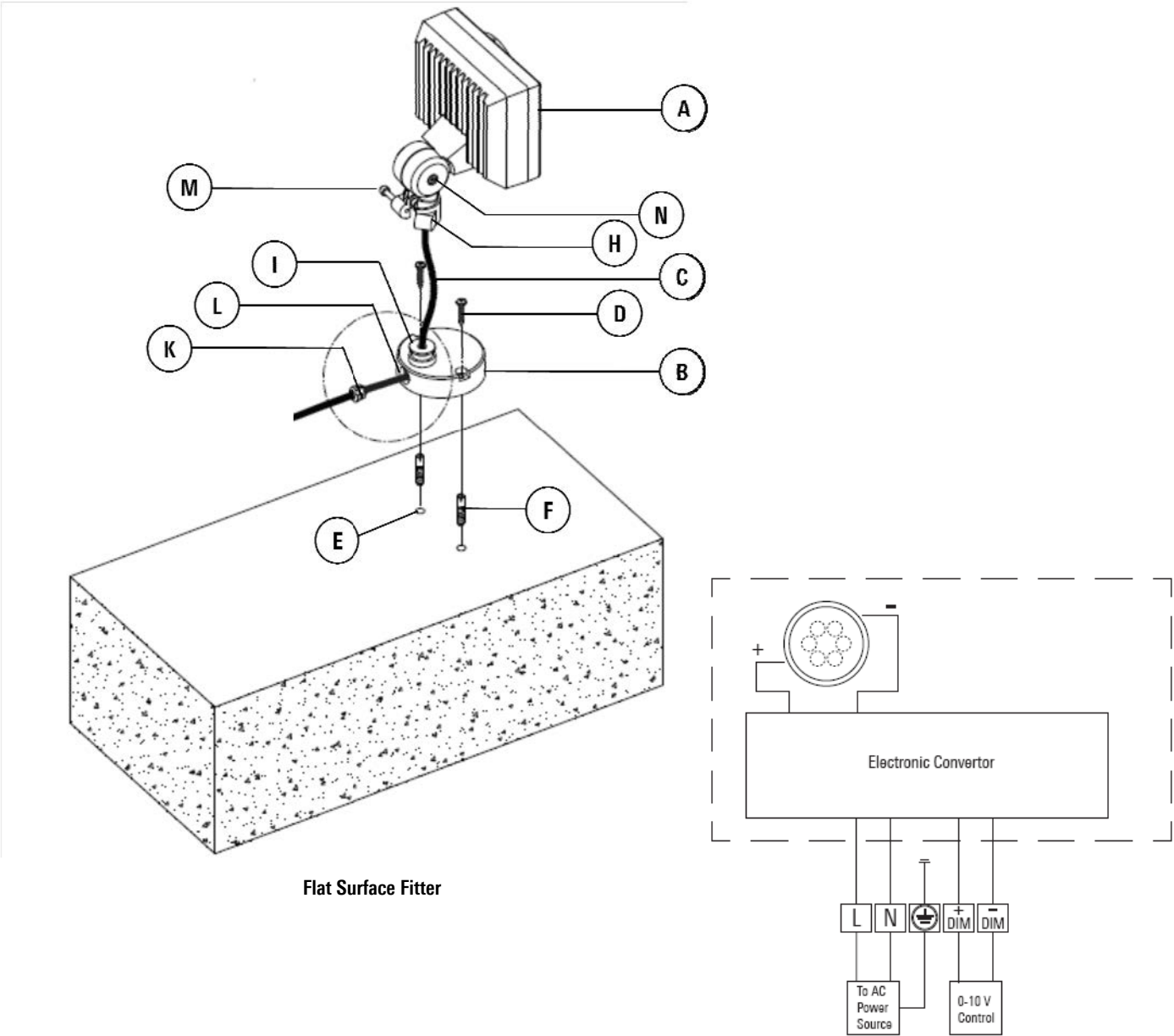
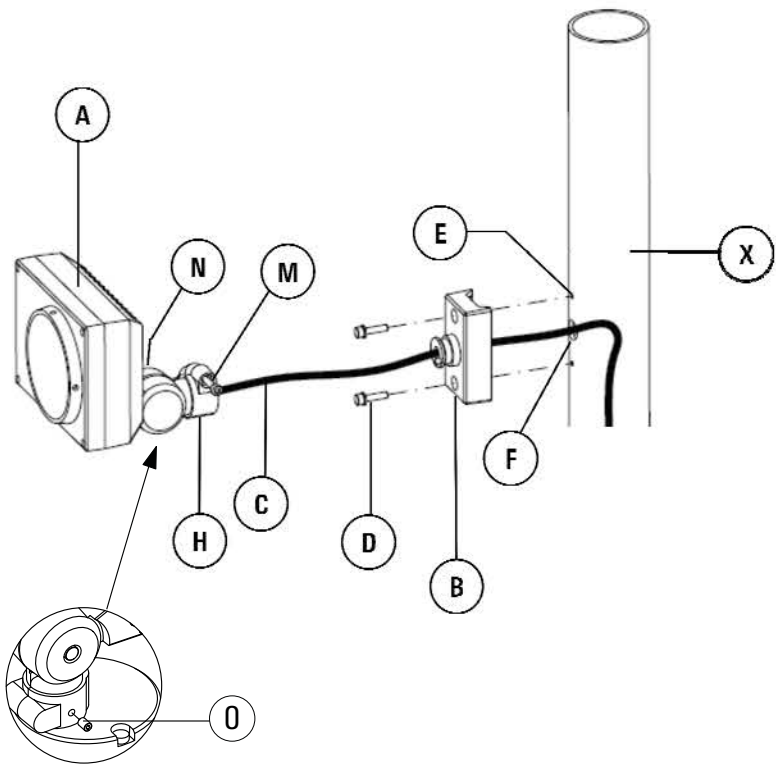


Fig. II Wiring diagram 1-10 V analogue dimming interface