

we-ef



WE-EF LEUCHTEN
Installation and Maintenance
Instructions

Projector

FLC121 #1 LED

FLC131 #1 LED

FLC141 #1 LED



Do not open during installation

This product is factory-sealed.
Refer to the instructions contained in this document for details.



ESD Sensitive Product

This product is Electrostatic Discharge sensitive. The cable provided is connected directly to the LED PCB.
Ensure appropriate grounding measures are taken when installing this product.



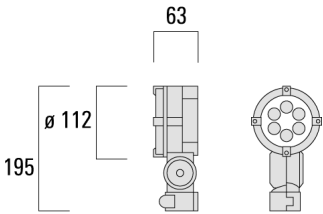
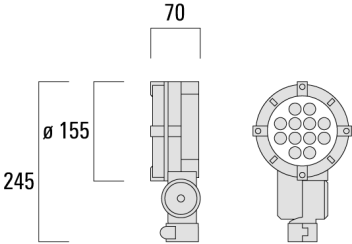
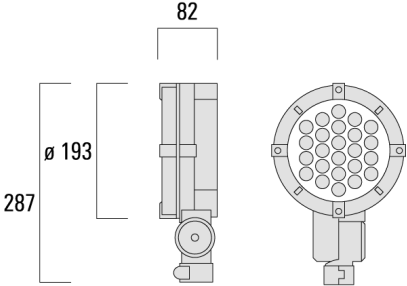
Surge Protection

For comprehensive protection of a luminaire installation against lightning and electrical surges, it is essential to cover mains supply and data input lines at the distribution board level, by using respective primary (Type 1) and secondary (Type 2) surge arrestors in compliance with EN61643-11/ IEC61643-1.

Warning

Ensure that all required surge protection measures are in place and activated prior to luminaire installation. Also, disconnect luminaires before operating high-power devices such as, for example, electrical arc welders.

Projector

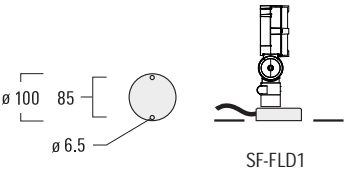
<p>FLC121 #1</p> 	<p>FLC131 #1</p> 
<p>FLC141 #1</p> 	

IP66, Class I, ta = 40°C

Mounting Accessories

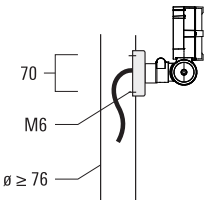
Flat surface fitter

SF-FLD1 for FLD/FLC100 #1	145-9535
---------------------------	----------



Column fitter

CF-FLD1 for FLD/FLC100 #1	145-9536
---------------------------	----------



Light Source

LED

Maintenance

Apart from cleaning the product's exterior surfaces, no special maintenance work is required.

Do not use high-pressure cleaners.

In case of component failure due to abnormal circumstances or at end of life, replacement must be carried out by a suitably qualified and trained professional.

Warning: Do not open luminaire while mains supply is switched on.

Installation

The product must be installed and maintained by a suitably qualified professional in compliance with latest building/construction and/or electrical regulations and relevant legislation.

Warning: Switch off and isolate the mains electrical supply prior to installing and connecting the luminaire.

Notice: If the luminaire is modified by anybody other than the original manufacturer, then the warranty will no longer be valid and shall become the full responsibility of the modifying person/organisation. Claims based on defects attributable to improper installation and/or application, and the consequences thereof, are excluded

Installation Procedure

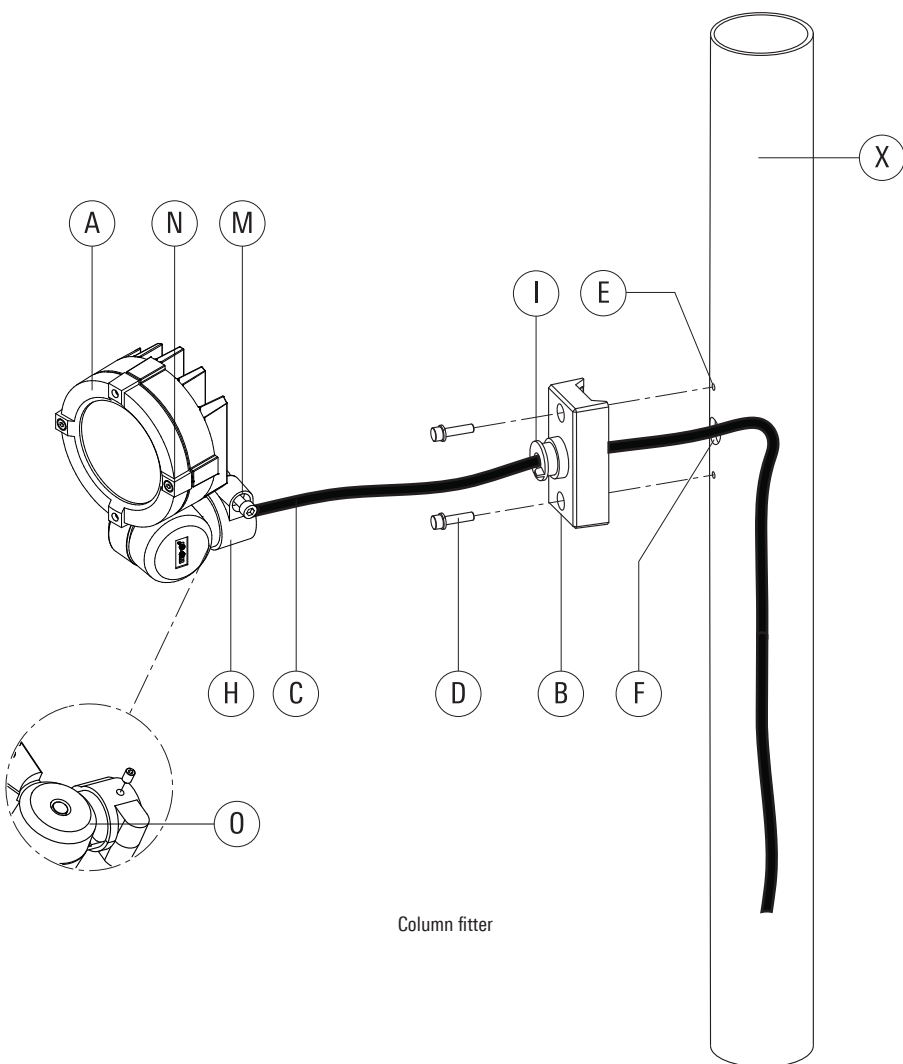
Installation – Flat surface fitter

- 1) Switch off and isolate the mains electrical supply.
- 2) Detach strain relief clip **K** from flat surface fitter **B**.
Attention: Keep strain relief clip **K** for locking cable later. (step 6 in this installation instruction)
- 3) Feed cable **C** from luminaire **A** through pivot **I** and hole **L** of flat surface fitter **T**.
- 4) Determine positions for fixing screws **D**. Drill relevant holes **Q** and insert nylon plugs **R**. Insert and tighten screws **D**.
Warning: Ensure not to damage any electrical cable, water pipe or other items drilling holes.
- 5) Loosen screw **M** on slipfitter **H** (do not turn it out) until the slipfitter can be opened. Connect luminaire **A** with flat surface fitter **T** by sliding slipfitter **H** over pivot **I**, while pulling cable **C** through hole **L** and turning luminaire **A** towards object to be illuminated. Ensure slipfitter **H** is properly seated on pivot **I**, then tighten screw **M**.
- 6) Clamp strain relief clip **K** on the cable **C** and press into the hole **L** of flat surface fitter **B**. Ensure the strain relief clip **K** is properly placed in position to lock the cable (Fig.I).
- 7) Connect the cable **C** to the matching Control Gear Box (CGB) as per the supplied instructions.
- 8) Loosen screws **N** and **O** slightly. Then aim luminaire in desired direction and tighten screws **N** and **O**.

Installation – Column fitter

Suitable for column diameter ≥ 76 mm.

- 1) Switch off and isolate the mains electrical supply.
- 2) Determine position for fixing screws **D** and cable entry hole **F**. Drill relevant holes **E** and **F** on column **X**. Ensure cable entry hole **F** has sufficient diameter to feed cable **C** from luminaire **A**.
- 3) Set and fix column fitter **B** in position. Insert and tighten screws **D**.
- 4) Feed cable **C** from luminaire **A** through pivot **I** and cable entry hole **F** on column **X**, while connecting luminaire **A** with column fitter **B** by sliding slipfitter **H** over pivot **I**. Turn luminaire **A** towards object to be illuminated. Ensure the slipfitter **H** is properly seated on pivot **I**, then tighten screw **M**.
- 5) Check that rating shown on luminaire label conforms with mains electrical supply.
- 6) Connect the cable **C** to the matching Control Gear Box (CGB) as per the supplied instructions.
- 7) Loosen screws **N** and **O** slightly. Then aim luminaire in desired direction and tighten screws **N** and **O**.



Column fitter

we-ef

www.we-ef.com

WE-EF LEUCHTEN

Germany

Tel +49 5194 909 0

Fax +49 5194 909 299

info.germany@we-ef.com

WE-EF LUMIERE

France

Tel +33 4 74 99 14 44

Fax +33 4 74 99 14 40

info.france@we-ef.com

WE-EF HELVETICA

Switzerland

Tel +41 22 752 49 94

Fax +41 22 752 49 74

info.switzerland@we-ef.com

WE-EF LIGHTING

United Kingdom

Tel +44 844 880 5346

Fax +44 844 880 5347

info.uk@we-ef.com

WE-EF LIGHTING

Thailand

Tel +66 2 738 9610

Fax +66 2 175 2174

info.asiapacific@we-ef.com

WE-EF LIGHTING

Australia

Tel +61 3 8587 0444

Fax +61 3 8587 0499

info.australia@we-ef.com

WE-EF LIGHTING

United States of America

Tel +1 724 742 0030

Fax +1 724 742 0035

info.usa@we-ef.com



TO9210W0817 © WE-EF 2018

Technical specifications are
subject to change.