

we-ef

WE-EF LIGHTING



Installation and
Maintenance Instructions for
FLC230 LED Profile Projector





WARNING :

This product to be installed by qualified personnel only.

Switch off and isolate the electrical supply during installation.

At no stage is the luminaire to be opened when live.

Connections and cables are labelled, before installation ensure the supply matches the luminaire designation.



ESD Sensitive Device:

This luminaire contains electrostatic sensitive devices. Do not handle the LED PCB or LED connection leads without suitable ESD prevention methods in place. If in doubt contact WE-EF LIGHTING or an authorised Sales partner. Warranty can be void if the correct handling procedures are not observed.



Surge Protection:

For comprehensive protection of a luminaire installation against lightning and electrical surges, it is essential to cover mains supply and data input lines at the distribution board level, by using respective primary (Type 1) and secondary (Type 2) surge arrestors in compliance with EN61643-11/IEC61643-1.

Luminaires designated with the type code '+A' will have an internal Surge Protection Device (SPD) fitted. Street and area luminaries are supplied with an external SPD.

Where an external SPD is supplied, it must be fitted as per the supplied instructions to maintain warranty conditions.

Ensure that all required surge protection measures are in place and activated prior to luminaire installation. Disconnect luminaires before operating high-power devices such as, for example, electrical arc welders.



Cleaning:

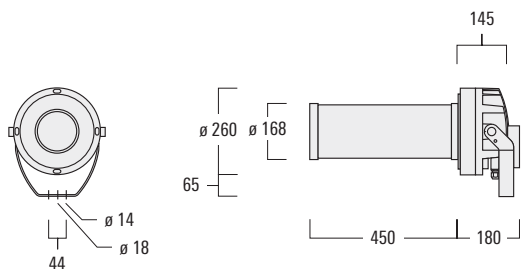
Apart from cleaning the product's exterior surfaces, no special maintenance work is required. **DO NOT** use high pressure cleaners on this luminaire



Notice:

Unless directed by this installation instruction, the luminaire is to be treated as Factory Sealed with no user serviceable parts. If the luminaire is modified by anybody other than the original manufacturer, the warranty will no longer be valid and shall become the full responsibility of the modifying person/organisation. Claims based on defects attributable to improper installation and/or application, and the consequences thereof, are also excluded.

Projectors



Lamps

FLC230 Profile Projector 12 LED 36W

FLC230-CC Profile Projector 12 LED 42W

Protection: IP66, K06

Class I, $t_a = 25^\circ\text{C}$

Windage area: 0,122 m²

Weight: max. 10,8 kg



Tools required

- Screwdriver TX 25
- Screwdriver TX 40
- Screwdriver TX 70
- Screwdriver with blade 3x1

Installation

The product must be installed and maintained by a suitably qualified professional in compliance with latest building/construction and/or electrical regulations and relevant legislation.

In case of component failure due to abnormal circumstances or at end of life, replacement must be carried out by a suitably qualified and trained professional.

In case of questions please contact our technical hotline: +61 458 9333 399 (from Monday - Friday from 07.00 until 19.00 hours).

Adjusting the lenses

The profile projector must be in operation when the lenses are being adjusted, these adjustments may not be made in the rain, snow or in the event of increased humidity. **Caution: Do not touch the LED area!**

Installation Procedure (Mounting and Termination)

- 1) Prior to electrical connection, proceed with mechanical installation by firmly fixing stirrup **A** to optional mounting accessory or directly to a suitable surface.

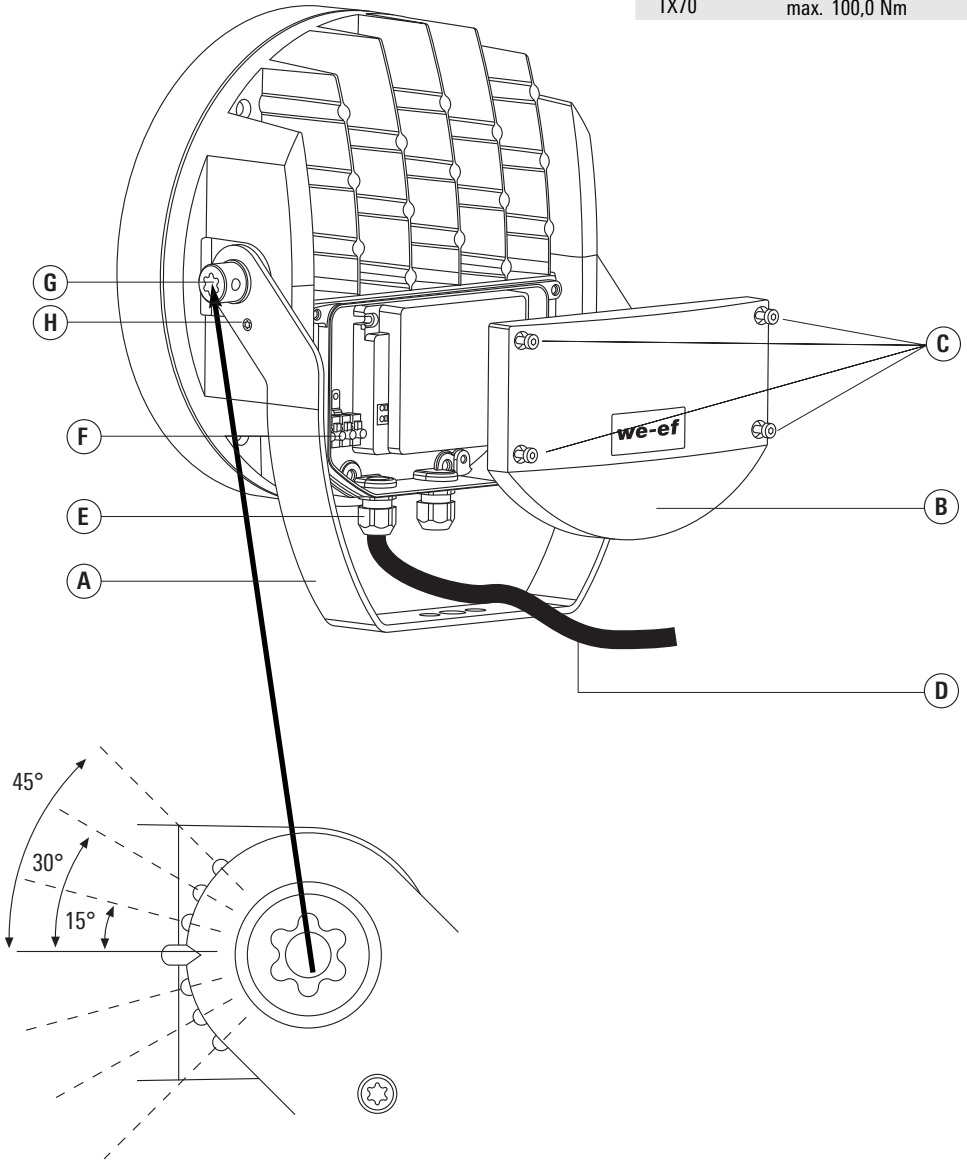
Aim luminaire.

Caution: Make sure not to damage any electric cable, water pipe or other devices while drilling holes.

- 2) Switch off and isolate the mains electrical supply. ⚡
- 3) Remove gear box cover **B** by releasing screws **C**.
- 4) Check that rating shown on the luminaire label conforms with the mains electrical supply.
- 5) Feed mains supply cable **D** through cable gland **E**. An additional M20 gland is supplied to allow loop through of supply cabling or alternative DMX cabling arrangements.
- 6) Connect to the correspondingly marked contacts of terminal **F**, according to the wiring diagram. Tighten cable gland **E** firmly.
- 7) Reposition gear box cover **B** and tighten screws **C** evenly.
- 8) Loosen the two screws **G** slightly. Aim luminaire (see illustration), tighten screws **G** firmly (**100Nm**). In addition, tighten screw **H** (max. **6Nm**) to secure orientation of luminaire.

Torque

Screw	Torque
TX20	max. 2,0 Nm
TX25	max. 4,0 Nm
TX27	max. 6,0 Nm
TX30	max. 15,0 Nm
TX70	max. 100,0 Nm



Wiring Diagram

WE-EF Advanced, CC Wireless DMX and non dimmable luminaires

Class I → Phase to **L1**, Neutral to **N** and Earthing to ⊕

Class II → Phase to **L1**, Neutral to **N**

WE-EF Basic

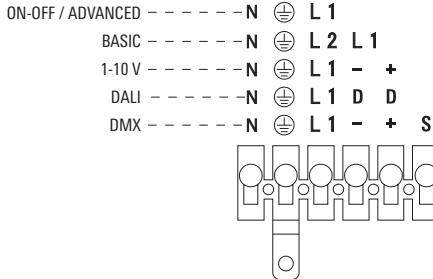
Class I → Phase to **L1**, Control Phase to **L2**,
Neutral to **N** and Earthing to ⊕

Class II → Phase to **L1**, Control Phase to **L2**, Neutral to **N**

1-10V / DALI (INC TW) / CC (DMX)

Class I → Phase to **L1**, Neutral to **N** and Earthing to ⊕,
1-10V, DMX to **+** and 1-10V, DMX to **-**
DALI to **D**

Class II → Phase to **L1**, Neutral to **N**,
1-10V, DMX to **+** and 1-10V, DMX to **-**
for DMX shield on '**S**'
DALI to **D**



Notice:

All FLC200 luminaires are vented, and have a venting element. For the FLC230/240/260 the housing contains a M12 venting element (IP68). In the FLC220 the venting element is contained in the main entry gland. Under no circumstances are the glands to be removed from this luminaire. The secondary gland is supplied with a blanking element if not required for cabling, the blanking element retains the rated IP of the luminaire.

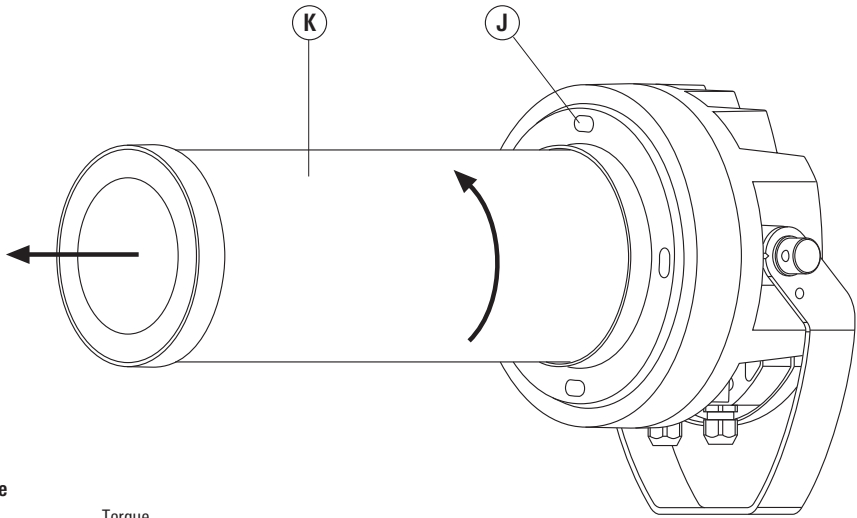
For operation as color changer the floodlights of the FLC200-CC series require a DMX control signal. The operation without control signal may lead to error.

The operation of the Wireless DMX version requires the luminaire to be configured to a suitable wireless access point. The luminaire is supplied addressed but unpaired to an access point. All FLC200-CC have RDM compatible drivers

Installation Procedure (Projector)

- 1) **Fig. 2:** Slightly loosen the fasteners **J**; do not remove them. Turn the profile **K** to the left and carefully remove it by pulling it towards the front.
- 2) Remove the transport lock **L** from inside the profile **K**.
- 3) **Fig. 3:**
The retainer **N** with the desired insert always remains in the position set at the factory.
Do not change it!
 - **Gobo projector [GP] – Fig. 5:**
Insert the gobo **M** (motif up to a maximum diameter of 60 mm) into the retainer **N**. To do so, slide the retention springs **P** outwards, insert the gobo **M**, align and slide the retention springs **P** back into place to secure it.
 - **Zoom projector [ZP] – Fig. 5:**
Only if you have ordered an additional perforated glare shield **U**, is this shield inserted, aligned and secured like a gobo **M** in the retainer **N**.
 - **Frame projector – [FP] Fig. 6:**
The contour of the emitted light may be set with the four shutters **X** by using the contour slide **O** in the retainer **N**. To do so, unscrew the four knurled fasteners **T3**, set the desired contour by moving the shutters **X** and tighten the knurled fasteners **T3**.
- 4) **Fig. 3:** To set the image size, loosen the knurled fasteners **T1** on the zoom lens **Q** and move until the desired size has been achieved.
- 5) **Fig. 3:** To focus, loosen the focus lens **R** with the knurled fasteners **T2** and move until the image is sharply delineated. Tighten all knurled fasteners **T** again.
- 6) **Fig. 4 – only on GP**
A shutter **S** (D = 42 mm) is located directly behind the zoom lens **Q**. This is designed to improve the quality of the image (sharpness) but reduces the intensity of the light.
 - The shutter **S** may be simply removed by unscrewing the four fasteners **W** if a higher intensity of light is required. Please keep in mind that this measure will reduce the quality of the image (sharpness), particularly in the outer areas.
- 7) Clean the lenses with the provided microfibre cloth, carefully slide the profile **K** over the lens, turn it to the right and secure it with the four fastening fasteners **J** once all the desired settings have been made.

Fig. 2



Torque

Screw	Torque
M4	max. 2,0 Nm
M5	max. 4,0 Nm
M6	max. 6,0 Nm
M8	max. 15,0 Nm
M16	max. 100,0 Nm

Caution:
do not touch inside!

Fig . 2.1

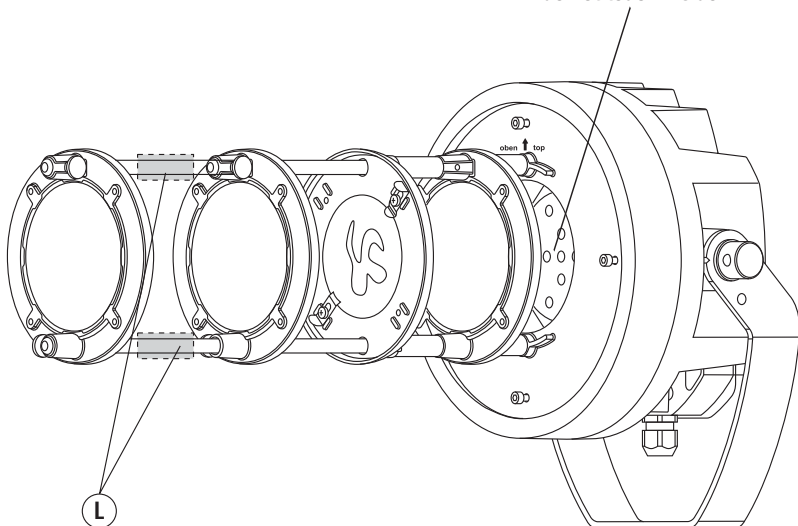


Fig . 3

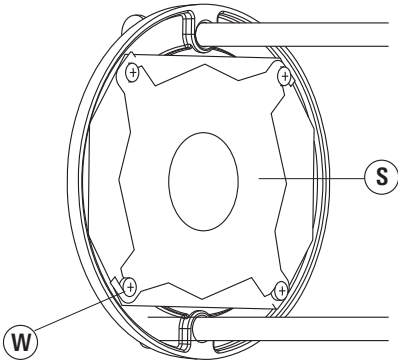
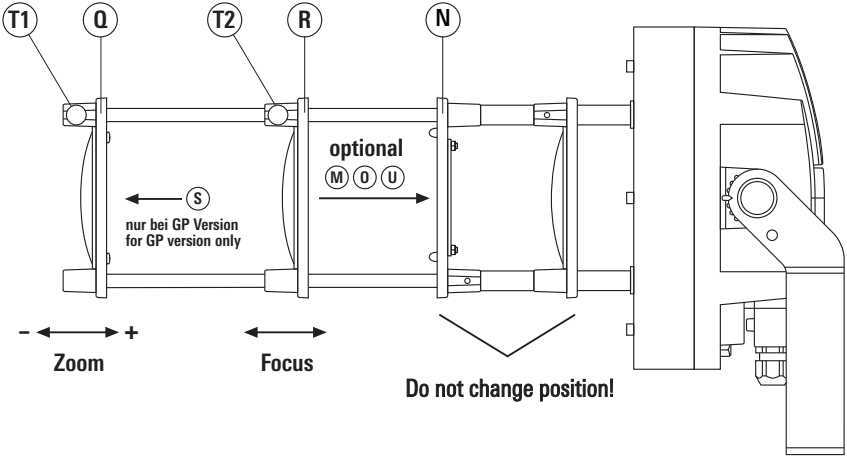


Fig . 4

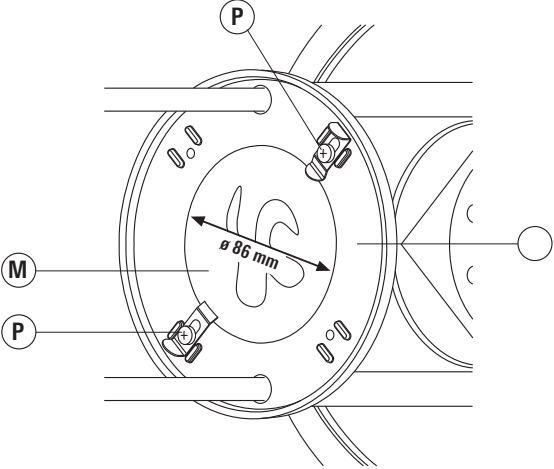


Fig . 5

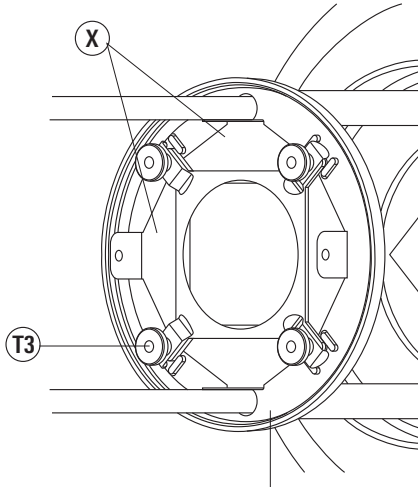
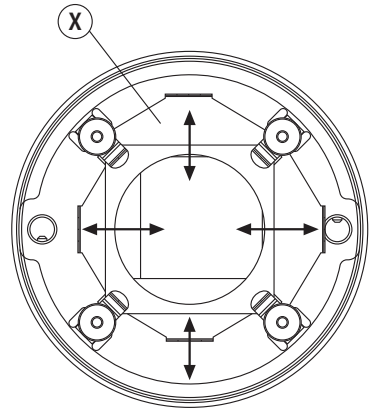


Fig . 6



Framing 0 – FP

Notice: In case the luminaire is equipped with an optional available surge protector, the function can get tested if the signal LED is lit green when the supply voltage is turned on.

In case the surge protector is defective, the LED device gets automatically disconnected from the mains supply. If the signal LED is not lit, the luminaire is not functioning.

For operation as color changer the floodlights of the FLC200-CC series require a DMX control signal. The operation without control signal may lead to misfeature.

we-ef

www.we-ef.com

WE-EF LEUCHTEN

Germany

Tel +49 5194 909 0

Fax +49 5194 909 299

info.germany@we-ef.com

WE-EF LUMIERE

France

Tel +33 4 74 99 14 44

Fax +33 4 74 99 14 40

info.france@we-ef.com

WE-EF HELVETICA

Switzerland

Tel +41 22 752 49 94

Fax +41 22 752 49 74

info.switzerland@we-ef.com

WE-EF LIGHTING

United Kingdom

Tel +44 844 880 5346

Fax +44 844 880 5347

info.uk@we-ef.com

WE-EF LIGHTING

Thailand

Tel +66 2 738 9610

Fax +66 2 175 2174

info.asiapacific@we-ef.com

WE-EF LIGHTING

Australia

Tel +61 3 8587 0444

Fax +61 3 8587 0499

info.australia@we-ef.com

WE-EF LIGHTING

United States of America

Tel +1 724 742 0030

Fax +1 724 742 0035

info.usa@we-ef.com



FLC230 LED_PP_270418 / 006-1386

Technische Änderungen vorbehalten.

Technical specifications are subject to change.

© WE-EF 2018

Safety indices

The manufacturer is then discharged from liability when damage is caused by improper use or installation.

If any luminaire and/or accessory is subsequently modified, the persons responsible for the modification shall be considered as manufacturer.