

Safety Notice

The manufacturer is discharged from liability when damage is caused by improper use or installation.

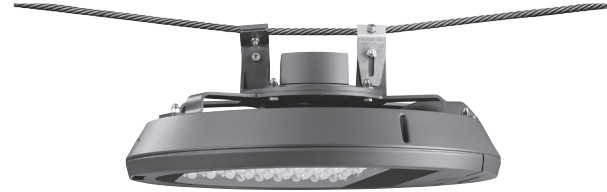
If any luminaire and/or accessory is subsequently modified, the persons responsible for the modification shall be considered as manufacturer.

Product Information / Surge Protection

As an option, this luminaire can also be fitted with a surge protector of Type 2-3 (at the time of order). The technical data can be found directly on the installed device. If the surge protector has been triggered by an adverse event, the luminaire is automatically disconnected from the mains. In that case, the LED on the surge protector no longer lights up.

For comprehensive protection of the luminaire against lightning and electrical surges, primary (Type 1) and secondary (Type 2) surge arrestors must be installed into the power supply. We recommend a combination arrestor (Type 1+2+3), which is installed in the control cabinet.

The technical planner/installer is responsible for the proper selection, sizing and installation of the surge protection modules that must be provided on site. Please note the various protection levels for Class I and II, as well as the applicable statutory provisions regarding surge protection. Installation and maintenance may only be performed by a qualified electrician.

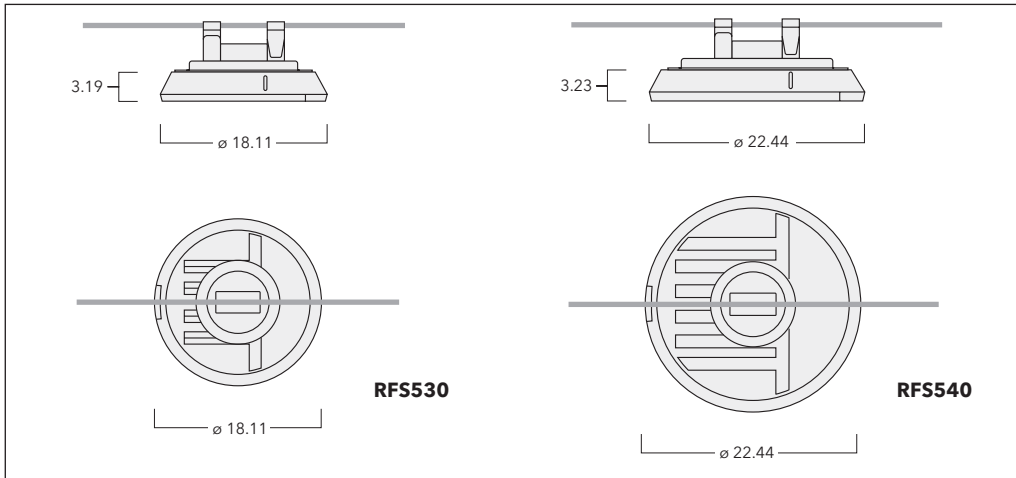


WE-EF LIGHTING

Installation and
Maintenance Instructions for
Catenary Mounted Luminaires
RFS500 LED Series

Catenary mounted luminaires

IP66, IK08



Light source

RFS530 LED 12 LED 12W / 24 LED 24W*
 12 LED 24W / 24 LED 48W*
 RFL540 LED 36 LED 36W / 48 LED 48W*
 36 LED 72W / 48 LED 96W*

* Nominal power, for latest data refer to
www.we-ef.com

Class I, II ta = 25 °C



Mounting Height 10 - 26 ft

Weight

RFS530 LED max. 22.0 lb
 RFS540 LED max. 30.9 lb

Windage area

RFS530 LED max. 0.667 ft²
 RFS540 LED max. 0.797 ft²

Tools required

- 4 mm / 6 mm Allen key
- 13 mm socket
- 24 mm wrench

Installation

The product must be installed and maintained by a suitably qualified professional in compliance with latest building/construction and/or electrical regulations and relevant legislation.

Notice: If the luminaire is modified by anybody other than the original manufacturer, then the warranty will no longer be valid and shall become the full responsibility of the modifying person/organisation. Claims based on defects attributable to improper installation and/or application, and the consequences thereof, are excluded.

In case of component failure, LED replacement due to abnormal circumstances or at end of life,

replacement must be carried out by a suitably qualified and trained professional.

In case of questions please contact our technical hotline: +1 724 742 0030 (from Monday - Friday from 08.00 until 16.00 hours).

Maintenance

Apart from cleaning the product's exterior surfaces, no special maintenance work is required. Do not use high-pressure cleaners.

Protect our environment: Discard used LEDs in compliance with the most recent environmental legislation.

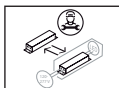
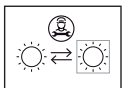
Installation: horizontal, light output downwards

Catenary suspension, wire dia: 0.236 - 0.472 in

Catenary suspension, wire angle adjustment

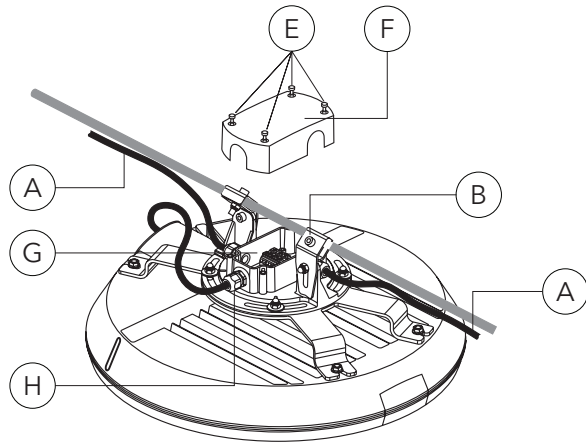
(incline): max. 10°

Possible twisting/rotation to wire: ± 25°

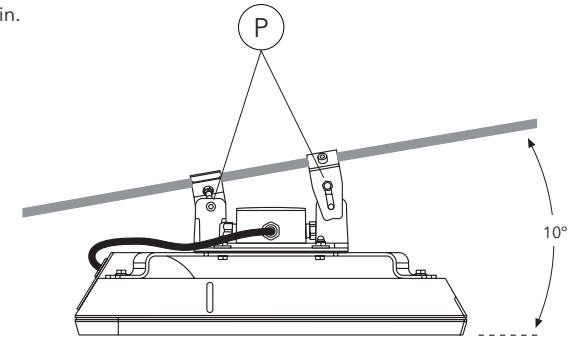


Installation Procedure

- 1) Switch off the mains electrical supply **A**.
- 2) Loosen screws of wire mounting suspension clamps **B**.
- 3) Hang luminaire with wire mounting suspension clamps to the wire.
- 4) Tighten screws of clamps **B**.
- 5) Loosen screws **E** on cover **F** of the wire mounting suspension and remove the cover.
- 6) Insert the corresponding wire length cut to suit connecting line **A**, through the cable gland **H** inside the connecting box **G**. For optional through wiring there is an additional cable gland **H** equipped with a plug which can be removed if required.
- 7) Connect cable to the corresponding marked contacts of the terminal clamp. Compare local voltage and frequency with the data shown on luminaire label. For class II applications the earth protection is not applicable. All leads and connections must match class II standards. Use the strain relief.
- 8) Firmly tighten cable gland **H** and reposition cover **F** onto the connecting box **G** and tighten it.

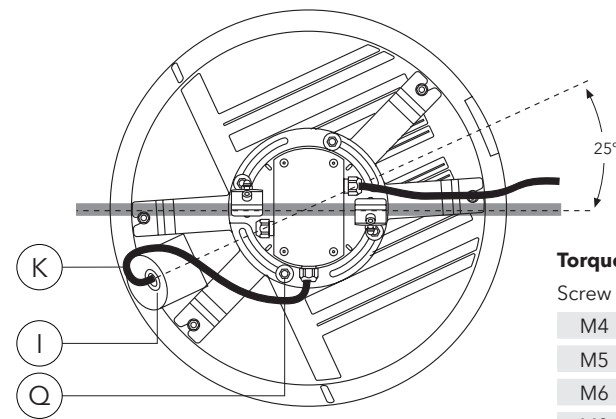


- 9) In case the luminaire is not to be angled horizontally, the wire mounting suspension can get adjusted to inclinations. To do this loosen the screws **P** of the clamps, adjust luminaire and tighten screws again.



- 10) The luminaire can get adjusted up to 25° to each side, to illuminate an object. For this, loosen the screws **Q** and the cable gland **I**. If the connection cable **K** is too short: open the luminaire, loosen the inside cable gland **I** and pull the required cable length out of the luminaire. When luminaire is adjusted, firmly tighten screws **Q** and the cable gland. Close luminaire.

- 11) Only a regular cleaning of the cover and the heat sinks is required. The glass cover can be cleaned with a mild suitable detergent. The heat sinks should be free of dirt, leaves or any other debris.



Torque

Screw	Torque
M4	max. 2,0 Nm (17.7 in-lb)
M5	max. 4,0 Nm (35.4 in-lb)
M6	max. 6,0 Nm (53.1 in-lb)
M8	max. 15,0 Nm (132.8 in-lb)
M16	max. 100,0 Nm (885.1 in-lb)