

**Safety Notice**

The manufacturer is discharged from liability when damage is caused by improper use or installation.

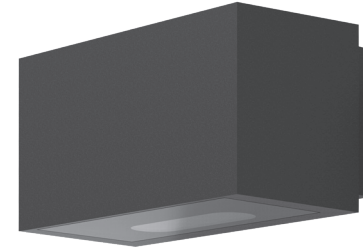
If any luminaire and/or accessory is subsequently modified, the persons responsible for the modification shall be considered as manufacturer.

**Product Information / Surge Protection**

As an option, this luminaire can also be fitted with a surge protector of Type 2-3 (at the time of order). The technical data can be found directly on the installed device. If the surge protector has been triggered by an adverse event, the luminaire is automatically disconnected from the mains. In that case, the LED on the surge protector no longer lights up.

For comprehensive protection of the luminaire against lightning and electrical surges, primary (Type 1) and secondary (Type 2) surge arrestors must be installed into the power supply. We recommend a combination arrestor (Type 1+2+3), which is installed in the control cabinet.

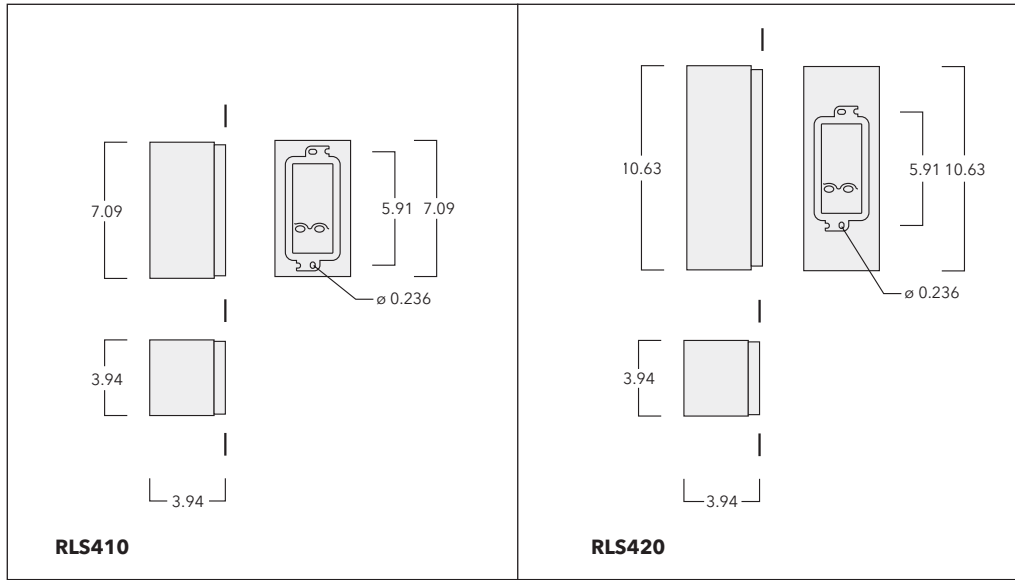
The technical planner/installer is responsible for the proper selection, sizing and installation of the surge protection modules that must be provided on site. Please note the various protection levels for Class I and II, as well as the applicable statutory provisions regarding surge protection. Installation and maintenance may only be performed by a qualified electrician.

**WE-EF LIGHTING**

Installation and  
Maintenance Instructions for  
Wall luminaires  
surface mounted  
**RLS400 LED Series**

## Wall Luminaires surface mounted

IP66, IK08



### Installation

The product must be installed and maintained by a suitably qualified professional in compliance with latest building/construction and/or electrical regulations and relevant legislation.

**Notice:** If the luminaire is modified by anybody other than the original manufacturer, then the warranty will no longer be valid and shall become the full responsibility of the modifying person/organisation. Claims based on defects attributable to improper installation and/or application, and the consequences thereof, are excluded.

In case of component failure, LED replacement due to abnormal circumstances or at end of life,

replacement must be carried out by a suitably qualified and trained professional.

In case of questions please contact our technical hotline: +1 724 742 0030 (from Monday - Friday from 08.00 until 16.00 hours).

### Maintenance

Apart from cleaning the product's exterior surfaces, no special maintenance work is required. Do not use high-pressure cleaners.

Protect our environment: Discard used LEDs in compliance with the most recent environmental legislation.

### Light Source

RLS410 ..... 3 LED 6W/ 9W / 13W\*

RLS420 ..... 6 LED 12W / 18W / 26W\*

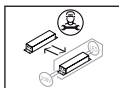
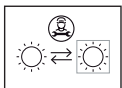
\* Nominal power, for latest data refer to [www.we-ef.com](http://www.we-ef.com)

Class I, ta = 40 °C

∅ 0.276 - 0.374 in  
(∅ 0.354 - 0.472 in) max. 14 AWG

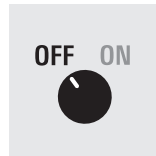
### Tools required

- Screwdriver TX25

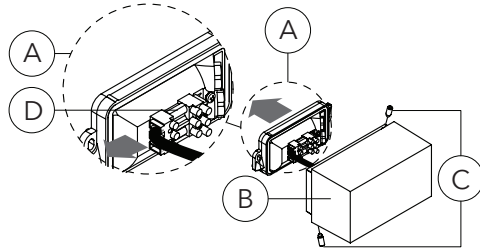


### Installation Procedure

- 1) Switch off the mains electrical supply. ⚡



- 2) Remove wall flange **A** from luminaire housing **B** by loosening screws **C**. Pull off terminal connector **D**.



- 3) Check that rating shown on luminaire label conforms with mains electrical supply.

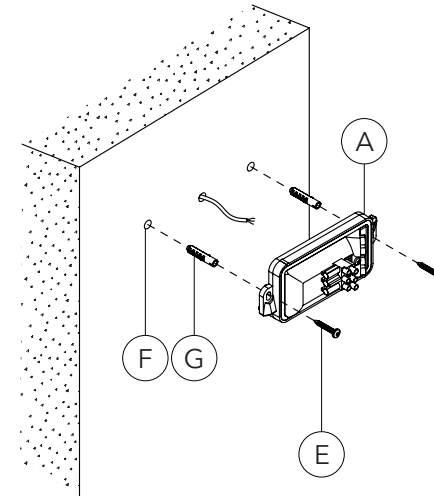
(example)

<b>we-ef</b>	05/19 IP66 <b>CE</b>
<b>RLS420-LED</b>	120-277V / 60 Hz
131-XXXX ➔	SOE XXXXXXXX
LED 3000K 18W	item no. XXX

- 4) Determine positions for two fixing screws **E**.  
Drill relevant holes **F** and insert nylon plugs **G** (not supplied by WE-EF).

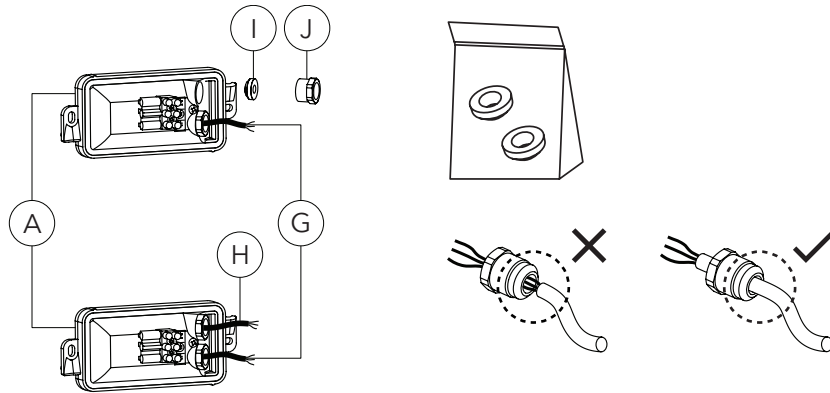
**ATTENTION:** Ensure not to damage any electrical cable, water pipe or other items drilling holes.

Fixture is intended to be mounted over a UL listed junction box (not supplied by WE-EF), use provided wall plate to cover boxes larger than the outer dimensions of the luminaire.

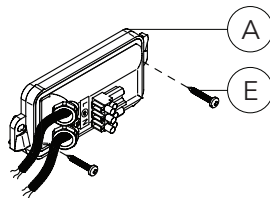


5) Feed mains supply cable **G** (and second cable **H** for through wiring, if required) through cable entry **J**, while setting wall flange **A** in position.

The pre-assembled cable entry **J** and packing ring **I** are suitable for cable diameters of 0.276 - 0.374 in. For larger cable diameters of 0.354 - 0.472 the enclosed cable entries must be used.



6) To fix the wall flange **A**, insert and tighten screws **E**. When aligning the flange plate, observe the sticker „light direction“. The screws **E** are not included in delivery.



7) Connect leads of main supply cable **H** (and second cable **I** for through wiring, if required) to respective terminals of socket **K**:

a) **ON/OFF** (L = Phase, ⊕ = Earthing, N = Neutral, **L** ⊕ **N**)

b) **0-10 V** (L = Phase, N = Neutral, ⊕ = Earthing, D-/D+ = 0-10 V control line)

**L1** **L2** ⊕ **N** **L3**



8) Position luminaire housing **B** over wall flange **A** and reconnect terminal connector **D**. Place the luminaire housing **B** over wall flange **A** and tighten two screws **C** gradually, in alternating sequence, both on top and bottom until fully secured.

