



WE-EF LEUCHTEN

Installation and Maintenance Instructions

Ceiling Luminaire

DOR120 LED



Do not open during installation

This product is factory-sealed.
Refer to the instructions contained in this document for details.



Surge Protection

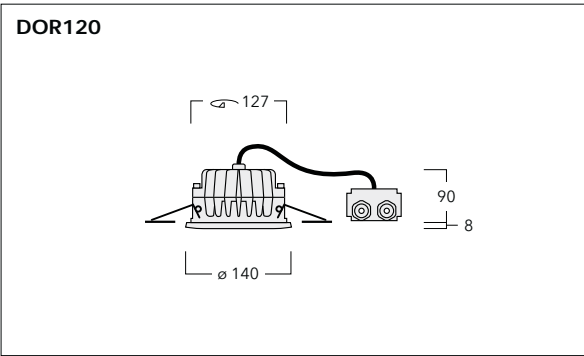
This product features built-in surge protection circuitry in compliance with applicable standards.

For comprehensive protection of a luminaire installation against lightning and electrical surges, it is essential to cover mains supply and data input lines at the distribution board level, by using respective primary (Type 1) and secondary (Type 2) surge arrestors in compliance with EN61643-11/ IEC61643-1.

Warning

Ensure that all required surge protection measures are in place and activated prior to luminaire installation. Also, disconnect luminaires before operating high-power devices such as, for example, electrical arc welders.

Ceiling Luminaire

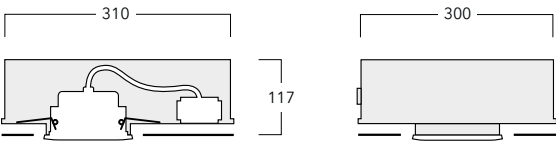


IP66, Class I, $t_a = 40^{\circ}\text{C}$

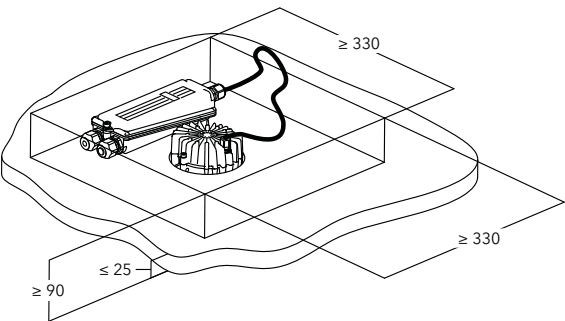
Accessories:

Installation blackout – Pre-installation blackout is recommended for mounting in cast concrete ceiling.

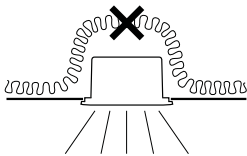
for DOR120 **135-9000** BCR120-I



BCR120-I



Minimum free space around DOR



No thermal insulating material

Light Source

LED

Maintenance

Apart from cleaning the product's exterior surfaces, no special maintenance work is required.

Do not use high-pressure cleaners.

In case of component failure due to abnormal circumstances or at end of life, replacement must be carried out by a suitably qualified and trained professional.

Warning: Do not open luminaire while mains supply is switched on.

Installation

The product must be installed and maintained by a suitably qualified professional in compliance with latest building/construction and/or electrical regulations and relevant legislation.

Warning: Switch off mains electrical supply prior to installing and connecting the luminaire.

Notice: If the luminaire is modified by anybody other than the original manufacturer, then the warranty will no longer be valid and shall become the full responsibility of the modifying person/organisation. Claims based on defects attributable to improper installation and/or application, and the consequences thereof, are excluded.

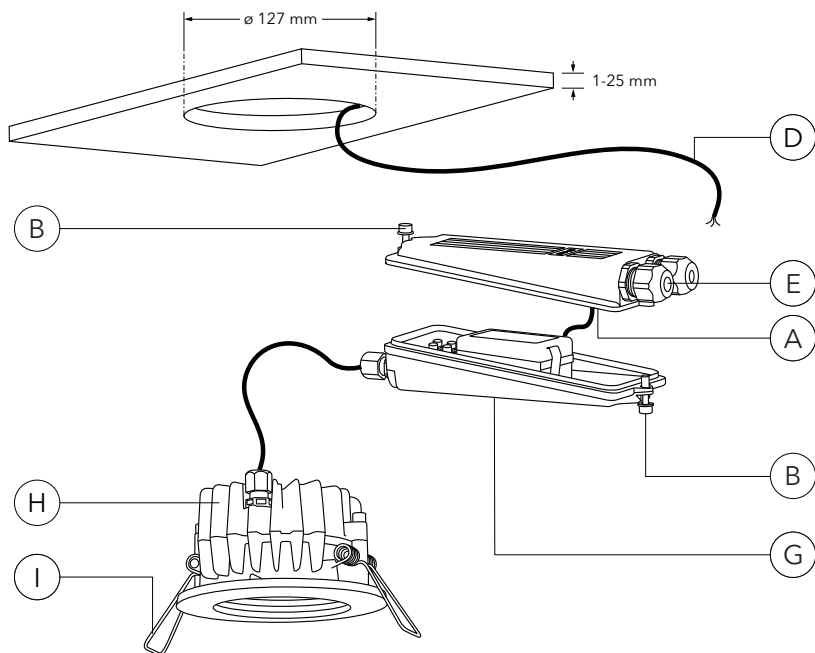
Attention: The luminaire is factory-sealed and does not need to be opened during installation.

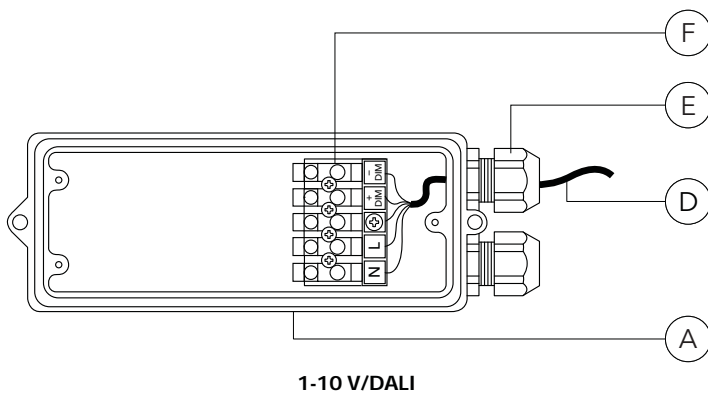
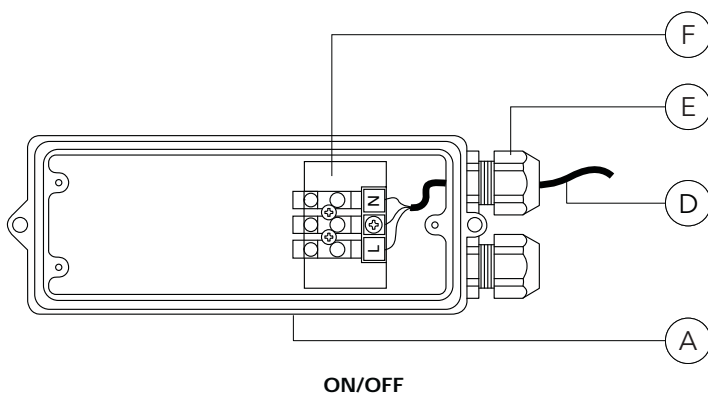
The installation on site must comply with local and/or national health and safety regulations.

Installation Procedure

Attention: Ensure a suitable recess is provided to accommodate the luminaire.

- 1) Switch off mains electrical supply.
- 2) Remove cover **A** by loosening screws **B**.
- 3) Check that rating shown on luminaire label conforms with mains electrical supply.
- 4) Feed mains supply cable **D** through cable gland(s) **E** (and a second cable for through wiring, if required).
- 5) Connect mains supply leads to respective terminals in terminal block **F**, according to type:
 - a) ON/OFF (L = Phase, N = Neutral, \oplus = Earthing)
 - b) 1-10 V/DALI (L = Phase, N = Neutral, \oplus = Earthing, DALI/DALI = DALI control line, DIM+/DIM- = 1-10 V control line).
- 6) Reposition cover **A** and tighten screws **B**.
- 7) Set cable **D**, gear box **G** and luminaire **H** in ceiling aperture. To insert luminaire **H**, push up torsion springs **I** while pushing luminaire **H** through the ceiling aperture. Once luminaire **H** is in position, the torsion springs will ensure a secure fit.







www.we-ef.com

WE-EF LEUCHTEN

Germany

Tel +49 5194 909 0

Fax +49 5194 909 299

info.germany@we-ef.com

WE-EF LUMIERE

France

Tel +33 4 74 99 14 44

Fax +33 4 74 99 14 40

info.france@we-ef.com

WE-EF SWITZERLAND

Switzerland

Tel +41 22 752 49 94

Fax +41 22 752 49 74

info.switzerland@we-ef.com

WE-EF LIGHTING

Thailand

Tel +66 2 738 9610

Fax +66 2 175 2174

info.asiapacific@we-ef.com

WE-EF LIGHTING

Australia

Tel +61 3 8587 0444

Fax +61 3 8587 0499

info.australia@we-ef.com

WE-EF LIGHTING

United States of America

Tel +1 724 742 0030

Fax +1 724 742 0035

info.usa@we-ef.com

TO9182W0823 © WE-EF 2023

Technical specifications are
subject to change.



WE-EF LEUCHTEN

Installation and Maintenance
Instructions

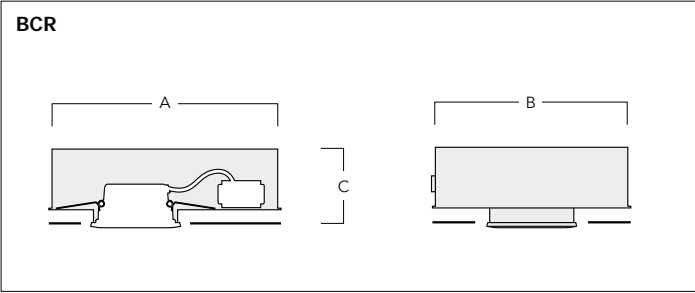
Ceiling Luminaire

BCR120-1

BCR130-1

BCR140-1

Installation Blockouts



Product Dimensions:

Installation blockouts			A	B	C
BCR120-I	for DOR120	135-9000	310	300	117
BCR130-I	for DOR130	135-9050	325	285	147
BCR140-I	for DOR140	135-9115	385	315	167

Installation Blockouts

For exposed concrete ceilings. To accommodate recessed ceiling luminaires DOR100 series.

Type I Blockouts

Luminaire faceplate remains proud of wall or ceiling surface. Actual recessed depth is kept to a minimum.

Installation

The described product should be installed and maintained by a suitably qualified person in compliance with latest construction and electrical regulations and relevant legislation.

Installation Procedure

Phase 1

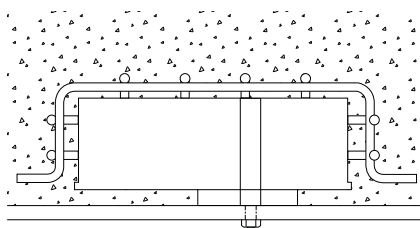
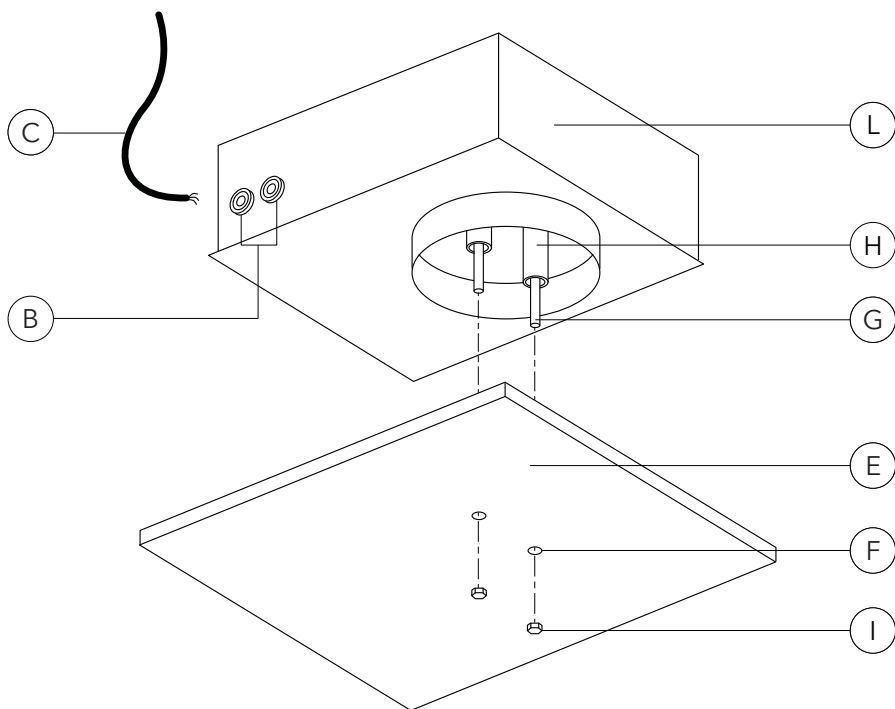
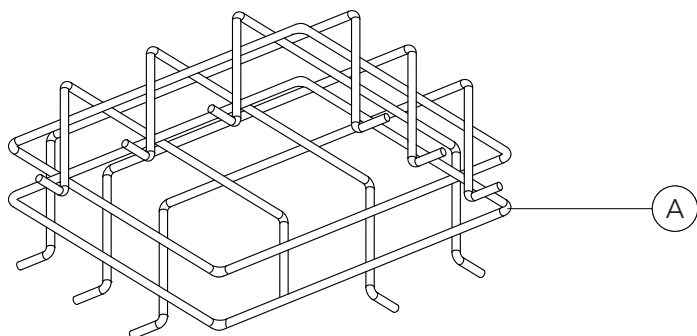
Installation of blockout during masonry works.

- 1) Determine positioning of blockout unit. Provide adequate reinforcement cage **A** in order to prevent damage to unit while pouring concrete.
- 2) Fit supply cable and/or conduit **C** firmly to cable entry hole **B** (second hole **B** is for through wiring, if needed).
- 3) Set and fix unit firmly in position by keeping spacers **H** in place, pushing stud bolt ends **G** through holes **F** and tightening nuts **I**.
- 4) While pouring concrete, ensure that blockout **L** is not damaged, and maintains its original shape and remains in its original location.
 - a) Be aware of location of the unit.
 - b) Follow specifications of DIN1045 regarding pouring of concrete (or those of equivalent international standards). Do not pour concrete from excessive height directly onto blockout.
 - c) Take appropriate on-site precautions to avoid damage to unit during concrete compacting process.
- 5) While dismantling formwork **E**, remove hardware **I, G, H**. Parts may be reused for other purposes or discarded in compliance with the most recent environmental legislation.

Phase 2

Installation of luminaire

- 6) Follow installation and maintenance instructions accompanying luminaire.





www.we-ef.com

WE-EF LEUCHTEN

Germany

Tel +49 5194 909 0

Fax +49 5194 909 299

info.germany@we-ef.com

WE-EF LUMIERE

France

Tel +33 4 74 99 14 44

Fax +33 4 74 99 14 40

info.france@we-ef.com

WE-EF SWITZERLAND

Switzerland

Tel +41 22 752 49 94

Fax +41 22 752 49 74

info.switzerland@we-ef.com

WE-EF LIGHTING

Thailand

Tel +66 2 738 9610

Fax +66 2 175 2174

info.asiapacific@we-ef.com

WE-EF LIGHTING

Australia

Tel +61 3 8587 0444

Fax +61 3 8587 0499

info.australia@we-ef.com

WE-EF LIGHTING

United States of America

Tel +1 724 742 0030

Fax +1 724 742 0035

info.usa@we-ef.com

TO9146W0823 © WE-EF 2023

Technical specifications are
subject to change.