

WE-EF LEUCHTEN

Installation and Maintenance Instructions

Tennis Court Lighting System **VFL540-SE LED**



Do not open during installation

This product is factory-sealed.

Refer to the instructions contained in this document for details.



Surge Protection

This product features built-in surge protection circuitry in compliance with applicable standards.

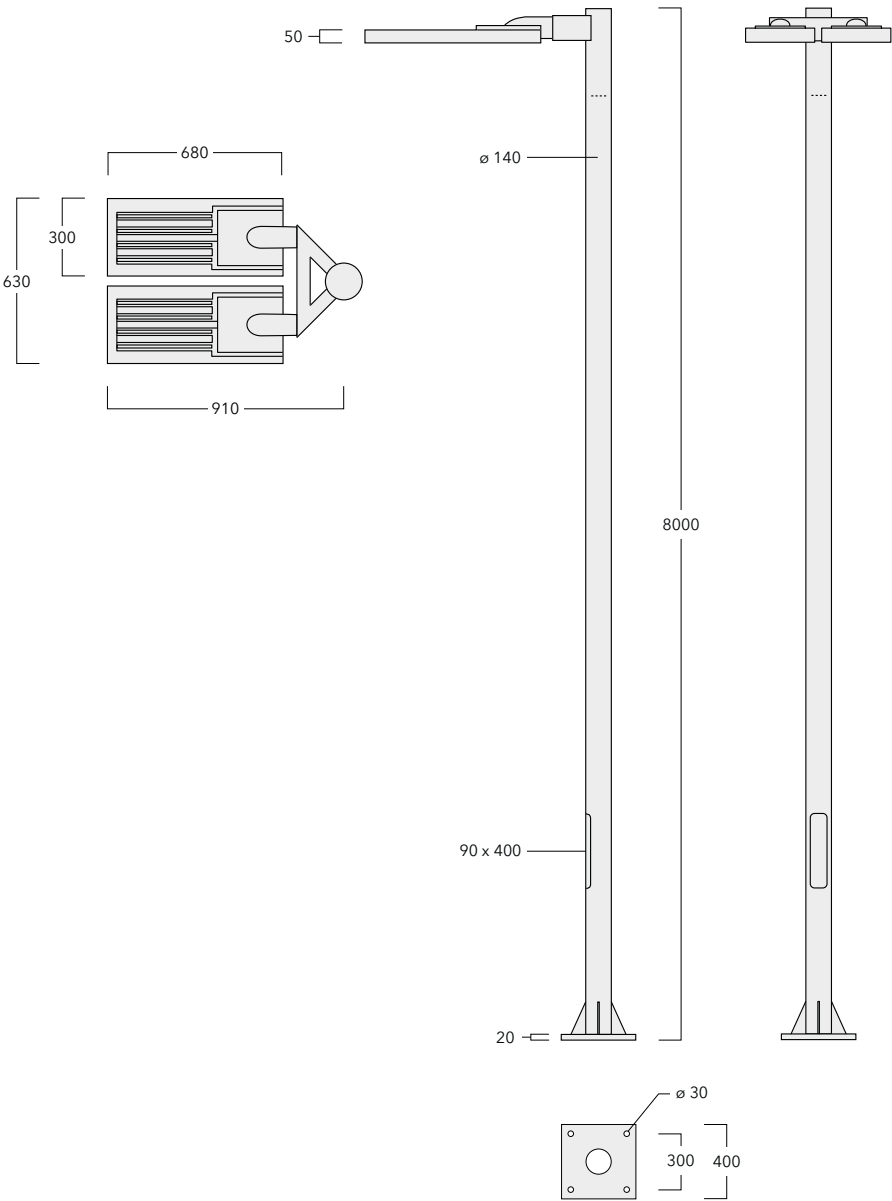
For comprehensive protection of a luminaire installation against lightning and electrical surges, it is essential to cover mains supply and data input lines at the distribution board level, by using respective primary (Type 1) and secondary (Type 2) surge arrestors in compliance with EN61643-11 / IEC61643-1.

Warning

Ensure that all required surge protection measures are in place and activated prior to luminaire installation. Also, disconnect luminaires before operating high-power devices such as, for example, electrical arc welders.

Tennis Court Lighting System

VFL540-SE



IP66, IK08, Class I, ta = 25°C outdoor usage only

Light Source

LED

Maintenance

Apart from cleaning the product's exterior surfaces, no special maintenance work is required.

Do not use high-pressure cleaners.

In case of component failure due to abnormal circumstances or at end of life, replacement must be carried out by a suitably qualified and trained professional.

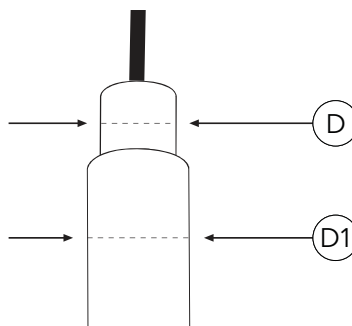
Warning: Do not open luminaire while mains supply is switched on.

Mounting height	m
for VFL540-SE	8 m only

Weight	kg
for VFL540-SE	max 8.4

Windage area	m ²
for one VFL540-SE	0.046

Installation: horizontal, light output downwards,
Suitable for spigot diameter D = 60 x 80 mm or D = 76 x 80 mm
Upper pole offset D1 max. 102 mm



Installation

The product must be installed and maintained by a suitably qualified professional in compliance with latest building/construction and/or electrical regulations and relevant legislation.

The supply cable must be installed inside the pole and not be exposed to the outside environment.

Warning: Switch off mains electrical supply prior to installing and connecting the luminaire.

Notice: If the luminaire is modified by anybody other than the original manufacturer, then the warranty will no longer be valid and shall become the full responsibility of the modifying person/organisation. Claims based on defects attributable to improper installation and/or application, and the consequences thereof, are excluded.

Attention: The luminaire is factory-sealed and does not need to be opened during installation.

The installation on site must comply with local and/or national health and safety regulations.

Accessories:

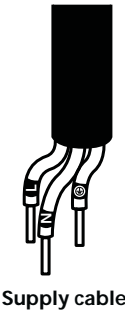
TM-C 80 poles			kg
for 1 x 2 VFL540-SE	270-9210	TM-C 80 140 – 2VFL	180.0
for 2 x 2 VFL540-SE (180°)	270-9211	TM-C 80 140 – 4VFL.B	185.0
for 2 x 2 VFL540-SE (100°)	270-9212	TM-C 80 140 – 4VFL.L	185.0

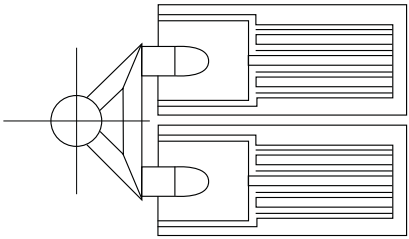
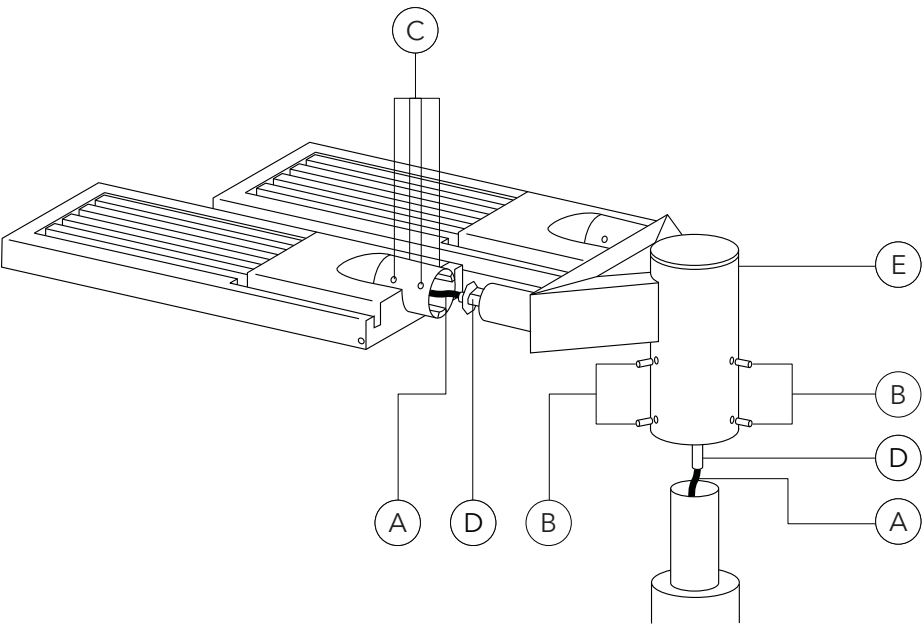
Installation Procedure

- 1) Switch off the mains electrical supply.
- 2) Check that rating shown on luminaire label conforms with mains electrical supply.
- 3) Attach supplied mounting bracket **E** (fig. I) to the spigot by means of set screws **B**, and lock in desired position.
- 4) Feed cables through conduit **D** and pole.
- 5) Attach the luminaires to the mounting bracket **E** by means of set screws **C**.
- 6) Adjust the orientation of the bracket by loosening set screws **B**. After the correct orientation has been set, retighten the set screws.
- 7) Connect the leads to their respective terminals at the base of the pole: (L = Phase, N = Neutral, ⊕ = Earthing).

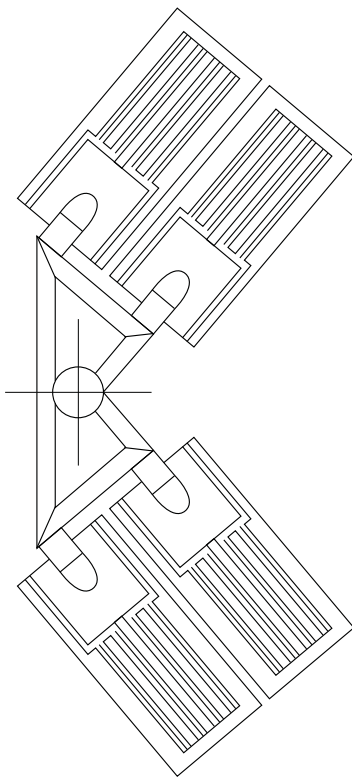
Attention: This product is suitable for operation in exterior tennis court installations only.

Fig.I Mounting brackets E

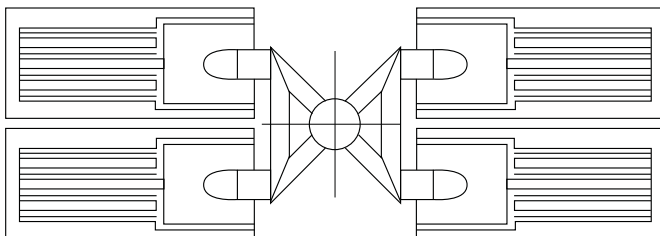




1 x 2 VFL540-SE BRACKET



2 x 2 VFL540-SE (100°) BRACKET



2 x 2 VFL540-SE (180°) BRACKET



www.we-ef.com

WE-EF LEUCHTEN

Germany

Tel +49 5194 909 0

Fax +49 5194 909 299

info.germany@we-ef.com

WE-EF LUMIERE

France

Tel +33 4 74 99 14 44

Fax +33 4 74 99 14 40

info.france@we-ef.com

WE-EF SWITZERLAND

Switzerland

Tel +41 22 752 49 94

Fax +41 22 752 49 74

info.switzerland@we-ef.com

WE-EF LIGHTING

Thailand

Tel +66 2 738 9610

Fax +66 2 175 2174

info.asiapacific@we-ef.com

WE-EF LIGHTING

Australia

Tel +61 3 8587 0444

Fax +61 3 8587 0499

info.australia@we-ef.com

WE-EF LIGHTING

United States of America

Tel +1 724 742 0030

Fax +1 724 742 0035

info.usa@we-ef.com

TO9239W0823 © WE-EF 2023

Technical specifications are
subject to change.