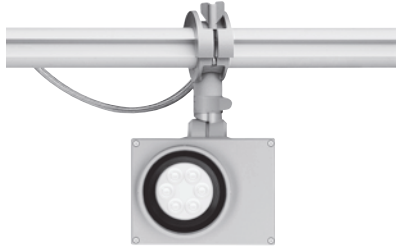


we-ef



WE-EF LEUCHTEN

Installation and Maintenance
Instructions

Projector

RAIL66 version

FLD121 #6 LED

FLD131 #6 LED

Space frame version

FLD121 #7 LED

FLD131 #7 LED

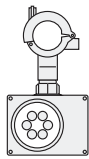
This product is factory-sealed.

Do not open during installation

Refer to the instructions contained in this document for details.

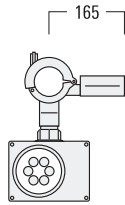
Projector

FLD121



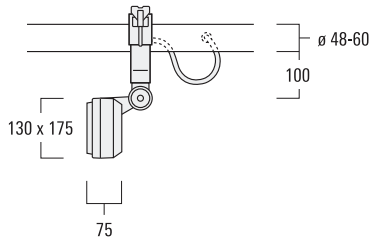
↻
355°

**RAIL66
version**

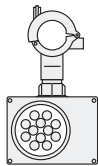


165
↻
355°

**Space frame
version**

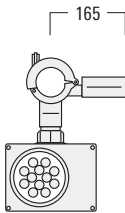


FLD131



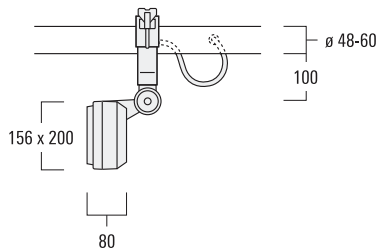
↻
355°

**RAIL66
version**



165
↻
355°

**Space frame
version**



IP66, Class I, $t_a = 40^{\circ}\text{C}$

Light Source

LED

Maintenance

Apart from cleaning the outside of the luminaire, no special maintenance is necessary.

Installation

The product must be installed and maintained by a suitably qualified person in compliance with the latest applicable regulations and relevant legislation.

Claims based on defects attributable to improper installation, application, operation and/or any modification carried out by the purchaser or third parties, and the consequences thereof, are excluded.

Attention: The housing **A** containing the LED light source is factory-sealed and does not need to be opened during installation.

Installation Procedure

Installation – RAIL66 version

Prior to installing the luminaire, mount and connect the selected RAIL66 mounting system in accordance with relevant installation instructions

- 1) Switch off mains electrical supply.
- 2) Check that rating shown on luminaire label conforms with mains electrical supply.
- 3) Determine desired position of luminaire **A** on rail **X**, dependent on aiming requirements and proximity to a suitable mains outlet **Y**.
- 4) Attach clamp **B** to rail **X**. Tighten wingnut **C**.
- 5) Remove protective cover **Z** from mains outlet **Y**. Insert in-line connector **G** and tighten.

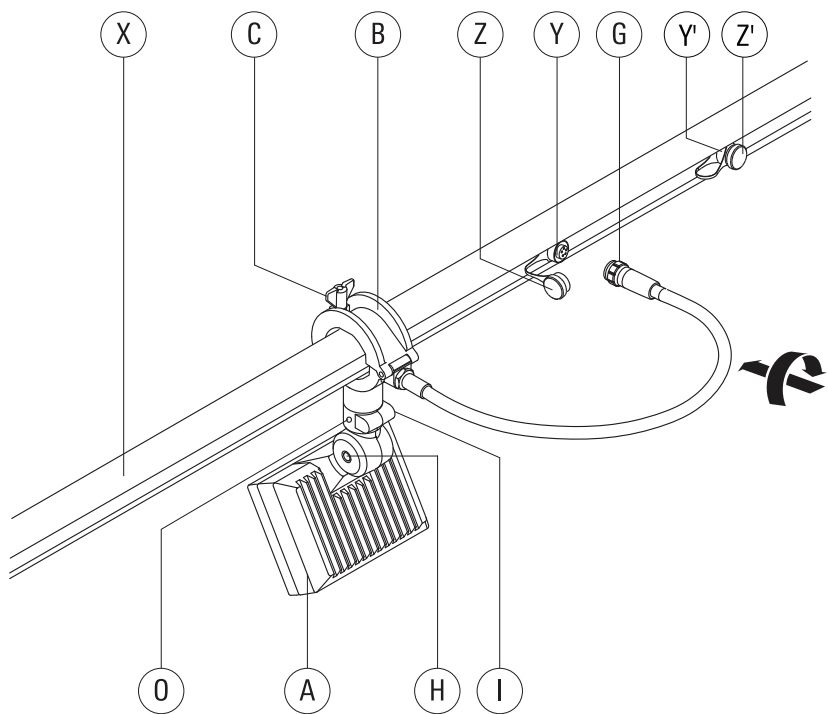
Attention: On any mains outlet **Y'** that is not used, protective cover **Z'** must remain firmly secured. Check and ensure proper fit and tightness.

- 6) Loosen screws **H** and **I** slightly. Aim luminaire in desired direction, tighten screws **H** and **I**. Tighten set screw **O**.

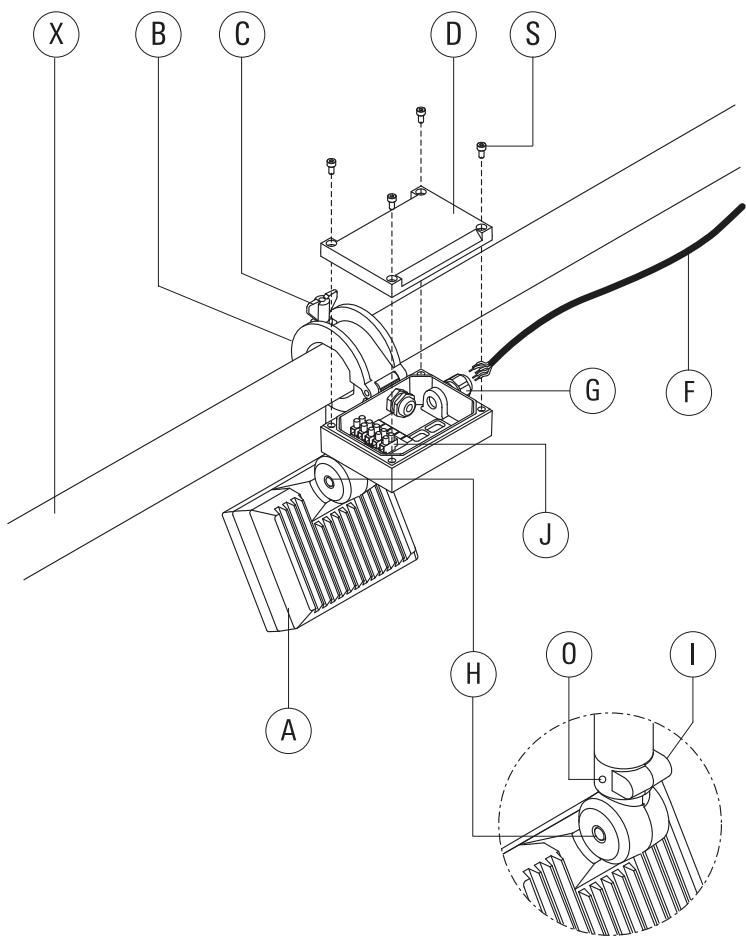
Installation – Space frame version

Suitable for space frame diameter 48-60 mm.

- 1) Switch off mains electrical supply.
- 2) Determine desired position of luminaire **A** on space frame **X**, dependent on aiming requirements.
- 3) Attach clamp **B** to space frame **X**. Tighten wingnut **C**.
- 4) Detach gear box cover **D** by loosening screws **S**.
- 5) Check that rating shown on luminaire label conforms with mains electrical supply.
- 6) Feed mains supply cable **F** through cable gland **G** (Fig. I).
- 7) Connect mains supply leads to respective terminals in terminal connector **J** (N = Neutral, L1 = Phase, ⊕ = Earthing). Tighten cable gland **G**.
For 1-10 V analogue dimming interface, connect main supply leads to respective terminals in terminal connector **J** (N = Neutral, L = Phase, ⊕ = Earthing) and (D+, D- = external 1-10 V dimming device). See Fig. II. Tighten cable gland **G**.
- 8) Reposition gear box cover **D** and secure in position by tighten screws **S**.
- 9) Loosen screws **H** and **I** slightly. Aim luminaire in desired direction, tighten screws **H** and **I**. Tighten set screw **O**.



RAIL66 version



Space frame version

Fig. I. Feed mains supply cable through cable gland

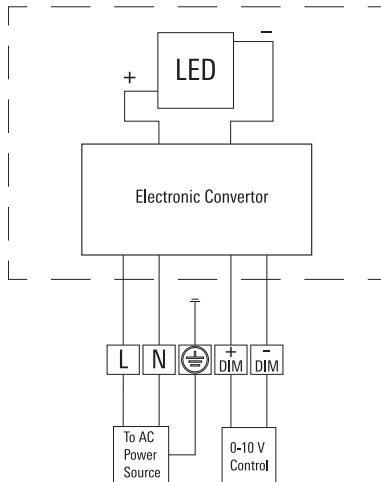


Fig. II Wiring diagram 1-10 V analogue dimming interface

we-ef

www.we-ef.com

WE-EF LEUCHTEN

Germany

Tel +49 5194 909 0

Fax +49 5194 909 299

info.germany@we-ef.com

WE-EF LIGHTING

Thailand

Tel +66 2 738 9610

Fax +66 2 175 2174

info.asiapacific@we-ef.com

WE-EF LUMIERE

France

Tel +33 4 74 99 14 44

Fax +33 4 74 99 14 40

info.france@we-ef.com

WE-EF LIGHTING

Australia

Tel +61 3 8587 0444

Fax +61 3 8587 0499

info.australia@we-ef.com

WE-EF HELVETICA

Switzerland

Tel +41 22 752 49 94

Fax +41 22 752 49 74

info.switzerland@we-ef.com

WE-EF LIGHTING

United States of America

Tel +1 724 742 0030

Fax +1 724 742 0035

info.usa@we-ef.com

WE-EF LIGHTING

United Kingdom

Tel +44 844 880 5346

Fax +44 844 880 5347

info.uk@we-ef.com

T09212W0117 © WE-EF 2017

Technical specifications are
subject to change.