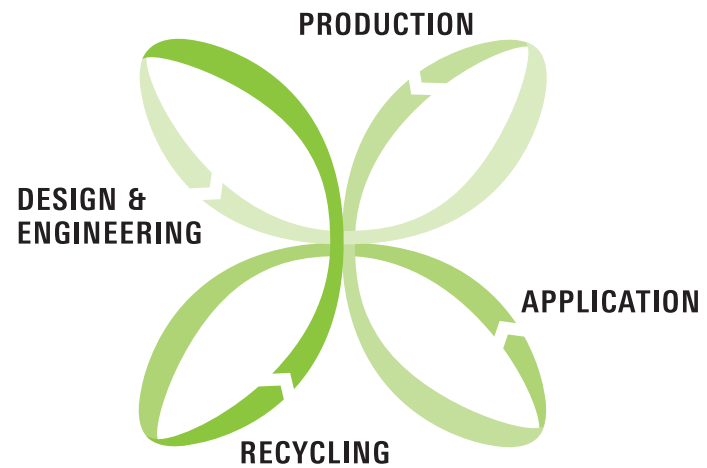


we-ef

WE-EF LIGHTING USA
KTX200 Series
KTY200 Series
ZFY200 Series
Bollards & Pathway Lighting
North American Edition





WE-EF is a global manufacturer of high-performance exterior luminaires renowned for outstanding engineering design and innovative optical systems. Established in 1950 in Germany, WE-EF is recognized worldwide as a leading exterior lighting specialist that provides professional lighting solutions for various applications, ranging from urban spaces to architectural projects.

As a pioneer and innovator of a wide range of application-specific modular LED lens technologies, WE-EF develops optical systems that deliver photometric efficiency together with high visual comfort.

WE-EF is dedicated to the philosophy of combining form and function, resulting in striking and timeless product designs.

Precision in the design process, careful consideration of material selection and high-quality manufacturing processes ensure that WE-EF luminaires are considered to be a benchmark of product performance, reliability and longevity as well as ease of installation.

Responsible resource management is practiced across all areas of operation, from product life-cycle assessments to sustainable business procedures.

KTX200/KTY200 SERIES

[Factory-sealed] Border light and bollard. IP66. IK10. Marine-grade, all-aluminum construction. 5CE superior corrosion protection including PCS hardware. Powdercoat finish in black RAL 9004, gray aluminum RAL 9007, white RAL 9016, or Dark Bronze RAL 8019. Polycarbonate lens. Silicone CCG® Controlled Compression Gasket. Luminaire is factory-sealed and does not need to be opened during installation.

Integral EC electronic converter in thermally-separated compartment. Advanced thermal management protects LEDs while optimizing lumens output. CAD-optimized optics for superior illumination and glare control.

0-10V dimmable, to be specified with order (-D).

Two-sided light output versions for 360° symmetric distribution.

One-sided light output versions with 'rearward glow' feature. Ideal for pathway lighting applications. Luminaire spacing up to 16-26 ft.

Planted root available on request.

Light source:
LED 9-26 W, 3000 K and 4000 K

Available distributions:
[C60] [R65]

Accessories:
■ Electrical, page 7
■ Mounting, page 7
■ Optical, page 7





[C60]

IOS® Innovative Optical System:

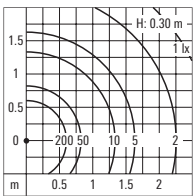
[C60] Controlled symmetric distribution

[C60] Two-sided

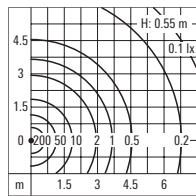
H = 10.63 in			lm	Factor*	lm	Factor*
KTX234	6 LED 18W/1050 mA	3000 K	748	0.87	4000 K	863
KTX234	6 LED 26W/1400 mA	3000 K	957	1.11	4000 K	1104

H = 23.62 in			lm	Factor*	lm	Factor*
KTY234	6 LED 18W/1050 mA	3000 K	748	0.87	4000 K	863
KTY234	6 LED 26W/1400 mA	3000 K	957	1.11	4000 K	1104

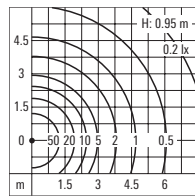
H = 39.37 in			lm	Factor*	lm	Factor*
KTY234	6 LED 18W/1050 mA	3000 K	748	0.87	4000 K	863
KTY234	6 LED 26W/1400 mA	3000 K	957	1.11	4000 K	1104



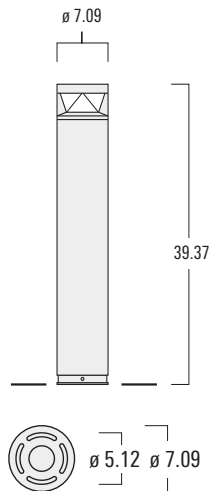
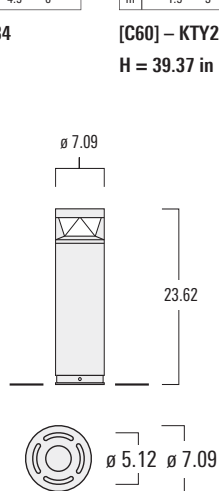
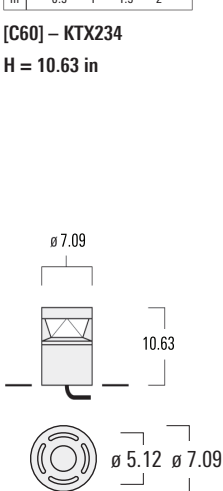
[C60] – KTX234
H = 10.63 in



[C60] – KTY234
H = 23.62 in



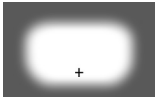
[C60] – KTY234
H = 39.37 in



KTX234

KTY234

* Multiplier for isolux values.



[R65]

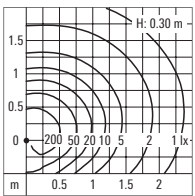
IOS® Innovative Optical System:
[R65] Pathway lighting distribution

[R65] One-sided

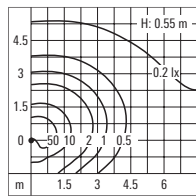
H = 10.63 in			lm	Factor*	lm	Factor*
KTX234	3 LED 9W/1050 mA	3000 K	471	0.87	4000 K	544
KTX234	3 LED 13W/1400 mA	3000 K	603	1.11	4000 K	696

H = 23.62 in			lm	Factor*	lm	Factor*
KTY234	3 LED 9W/1050 mA	3000 K	471	0.87	4000 K	544
KTY234	3 LED 13W/1400 mA	3000 K	603	1.11	4000 K	696

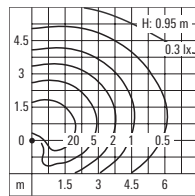
H = 39.37 in			lm	Factor*	lm	Factor*
KTY234	3 LED 9W/1050 mA	3000 K	471	0.87	4000 K	544
KTY234	3 LED 13W/1400 mA	3000 K	603	1.11	4000 K	696



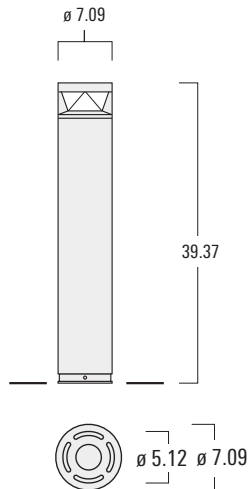
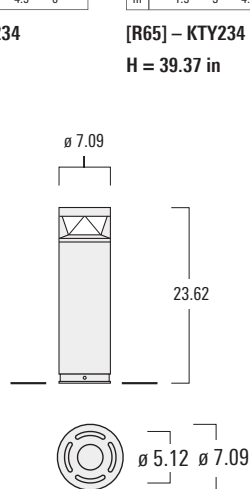
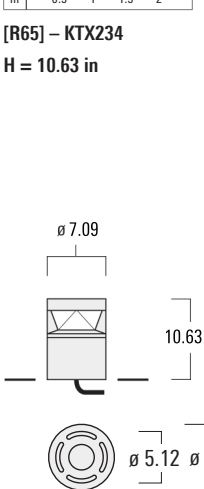
[R65] - KTX234
H = 10.63 in



[R65] - KTY234
H = 23.62 in



[R65] - KTY234
H = 39.37 in



KTX234

KTY234

ACCESSORIES

ELECTRICAL ACCESSORIES

Dimming interface
 0-10 V for KTX234/KTY234

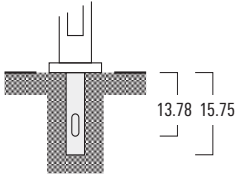
MOUNTING ACCESSORIES

Planted root – Galvanized steel. lbs.
 ESV4 for KTX234/KTY234 **7.1**

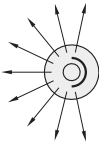
OPTICAL ACCESSORIES

One internal optical accessory. Factory-installed.

Cut-off shield
 IL-180 for KTX234/KTY234



ESV4



IL-180



KTY234 [R65] without.....



.....and with IL-180 cut-off shield.

ZFY200 SERIES

[Factory-sealed] Bollard. IP66. IK10. Marine-grade, all-aluminum construction. 5CE superior corrosion protection including PCS hardware. Powdercoat finish in black RAL 9004, gray aluminum RAL 9007, white RAL 9016, or Dark Bronze RAL 8019.

Polycarbonate lens. Silicone CCG® Controlled Compression Gasket. Luminaire is factory-sealed and does not need to be opened during installation.

Integral EC electronic converter in thermally-separated compartment. Advanced thermal management protects LEDs while optimizing lumens output. CAD-optimized optics for superior illumination and glare control.

0-10V dimmable, to be specified with order (-D).

Planted root available on request.

Light source:

LED 12-17 W, 3000 K and 4000 K

Available distribution:

[C60]





[C60]

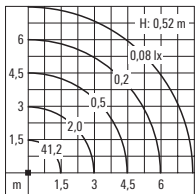
IOS® Innovative Optical System:

[C60] Controlled symmetric distribution

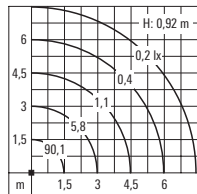
[C60] Two-sided

H = 23.62 in			lm	Factor*	lm	Factor*	
ZFY230	LED FT 12W/350 mA	3000 K	759	0.68	4000 K	799	0.71
ZFY230	LED FT 17W/500 mA	3000 K	1136	1.00	4000 K	1184	1.04

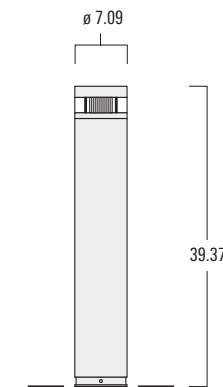
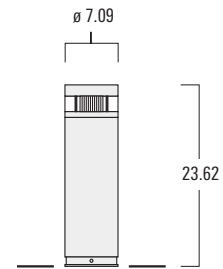
H = 39.37 in			lm	Factor*	lm	Factor*	
ZFY230	LED FT 12W/350 mA	3000 K	759	0.68	4000 K	799	0.71
ZFY230	LED FT 17W/500 mA	3000 K	1136	1.00	4000 K	1184	1.04



[C60] H = 23.62 in



[C60] H = 39.37



Accessories:

Dimming interface

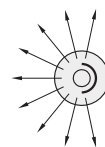
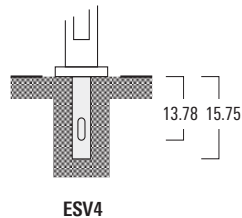
1-10 V for ZFY230

Planted root – Galvanized steel.

ESV4 for ZFY230 lbs 9.7

Cut-off shield

IL-180 for ZFY230



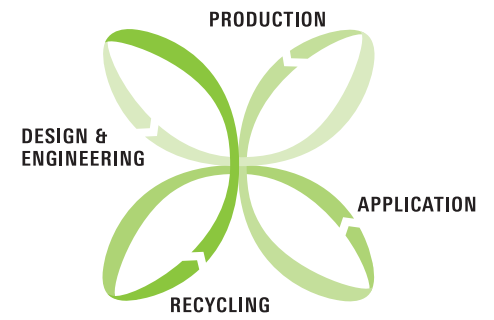
IL-180

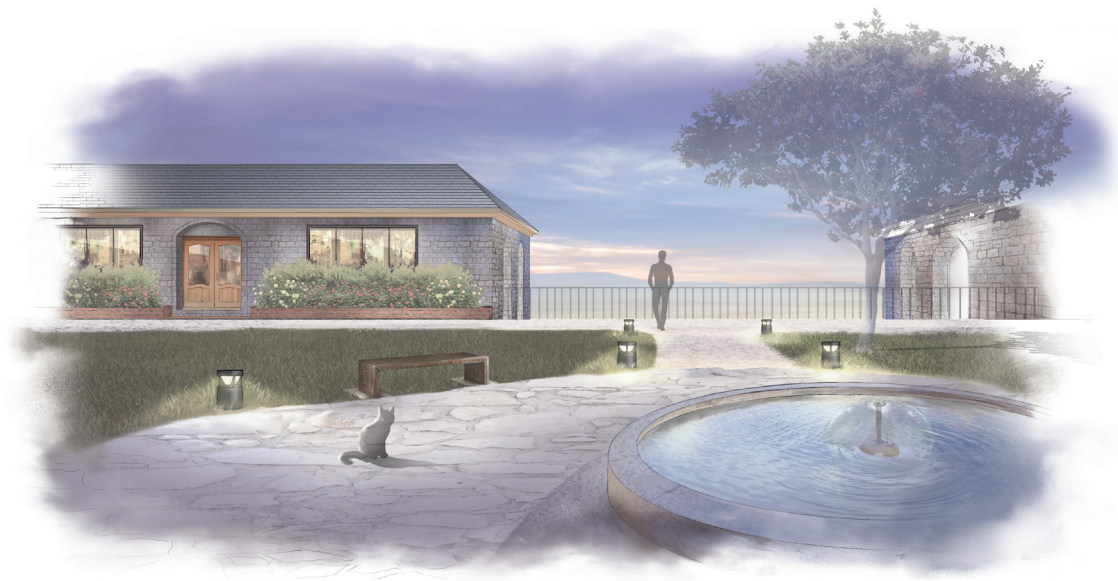


* Multiplier for isolux values.

FEATURES

	KTX234/KTY234	ZFY230
IP classification:	IP66	IP66
Electrical protection:	Class I	Class I
Impact protection:	IK10	IK10
Luminaire housing:	Marine-grade, all-aluminum construction, 5CE superior corrosion protection	Marine-grade, all-aluminum construction, 5CE superior corrosion protection
Hardware:	PCS hardware (polymer coated stainless steel)	PCS hardware (polymer coated stainless steel)
Main lens:	Polycarbonate, UV-stabilized	Polycarbonate, UV-stabilized
Gasket:	Silicone CCG® Controlled Compression Gasket	Silicone CCG® Controlled Compression Gasket
EC:	Integral EC electronic converter in thermally-separated compartment, including 10/10 kV surge protection	Integral EC electronic converter in thermally-separated compartment, including 10/10 kV surge protection
LED:	3-6 LEDs, 3000 K or 4000 K, CRI ≥ 80	CoB, 3000 K or 4000 K, CRI ≥ 80
Optics:	CAD-optimized optics for superior illumination and glare control. [C60] Controlled symmetric distribution. [R65] Pathway lighting distribution.	CAD-optimized optics for superior illumination and glare control. [C60] Controlled symmetric distribution.
Heat sink:	Integrated	Integrated
Installation:	Luminaire is factory-sealed and does not need to be opened during installation.	Luminaire is factory-sealed and does not need to be opened during installation.





KTX200 [C60]
Controlled symmetric distribution.



KTY200 [R65]
Pathway lighting distribution.
IL-180
Rearward cut-off shield.



ZFY200 [C60]
Controlled symmetric distribution.



KTX200



KTY200



ZFY200

IK10 Impact protection



[Factory-sealed]

Luminaire is factory-sealed and does not need to be opened during installation.

These products feature standard 10/10 kV surge protection.



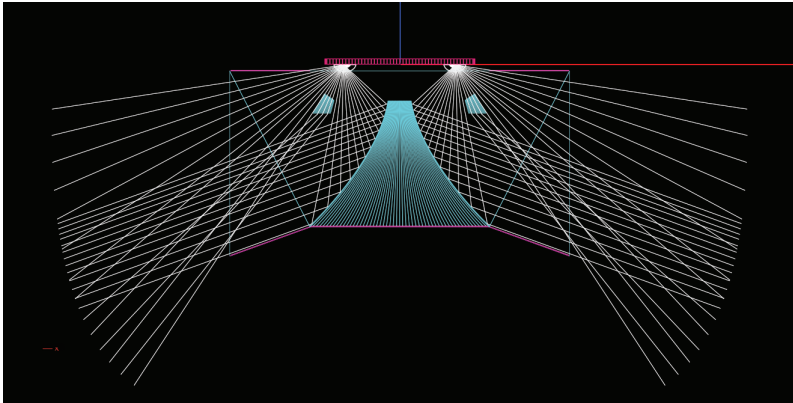
Outstanding and long lasting anti-corrosion properties can only be achieved by a comprehensive, integrated approach. WE-EF's unique 5CE system encompasses five critical elements: Substrate; Conversion coating; Powdercoating; PCS hardware; Process control.



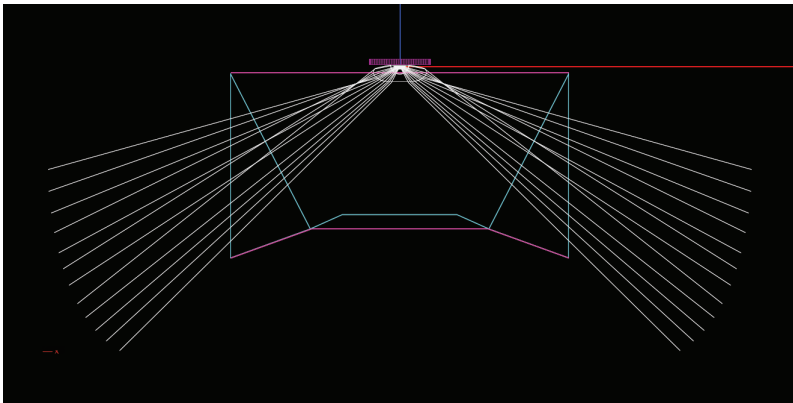
To reduce the risk of galvanic corrosion, all exposed hardware is made from austenitic stainless steel, and additionally sealed with a tough impregnated polymer coat – WE-EF's PCS hardware (polymer coated stainless steel).



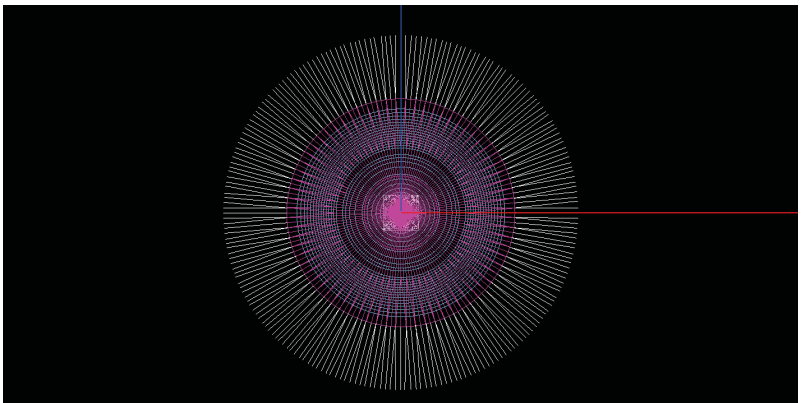
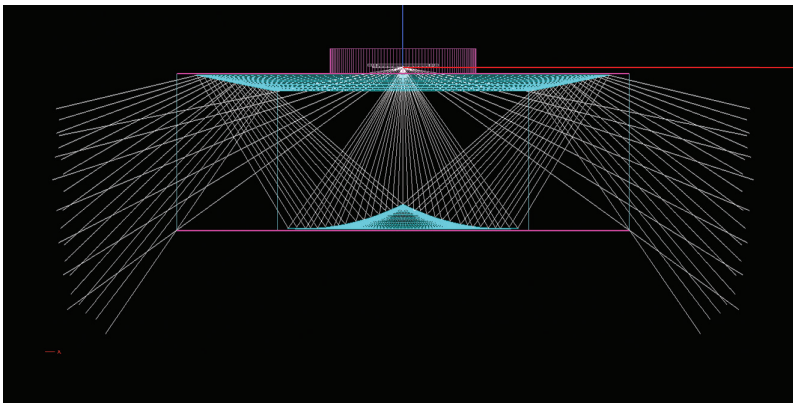
WE-EF's IOS® Innovative Optical System features CAD-optimized optics that provide superior illumination and glare control. Two distinctly different light distributions are available for the luminaires introduced in this brochure. The [C60] symmetric distribution is the highly efficient result of a specifically designed reflector/lens combination. While the '60' refers to the nominal angle of peak intensity from nadir (downward vertical), highly uniform illuminance is achieved at ground level. The [R65] pathway lighting distribution combines controlled 'forward' with broad 'side throw', allowing for large spacing intervals between luminaires. In addition, a controlled amount of vertical illuminance facilitates facial recognition and similar viewing tasks in an otherwise dark environment, such as public parks. These qualities, in combination with high visual comfort, make the featured bollard series truly outstanding photometric performers.



KTX200/KTY200 [C60]. This CAD raytracing simulation demonstrates the controlled downward light distribution. The refractor lens simultaneously reduces surface brightness and provides a limited vertical illuminance component – facilitating facial recognition.



KTX200/KTY200 [R65]. An array of highly effective optical lenses delivers uniform pathway lighting. The 'eyebrow' prisms restrict high-angle glare – ensuring high visual comfort.



ZFY200 [C60]. The luminaire's reflector elements produce a controlled downward distribution. An additional refractor lens reduces surface brightness while creating a limited amount of vertical illuminance – all contributing factors to ensuring high visual comfort, facial recognition and public safety.

www.we-ef.com



WE-EF LIGHTING USA, LLC

United States of America

Tel +1 724 742 0030

Fax +1 724 742 0035

info.usa@we-ef.com

WE-EF LIGHTING

Thailand

Tel +66 2 738 9610

Fax +66 2 175 2174

info.asiapacific@we-ef.com

WE-EF HELVETICA

Switzerland

Tel +41 22 752 49 94

Fax +41 22 752 49 74

info.switzerland@we-ef.com

WE-EF LEUCHTEN

Germany

Tel +49 5194 909 0

Fax +49 5194 909 299

info.germany@we-ef.com

WE-EF LIGHTING

Australia

Tel +61 3 8587 0444

Fax +61 3 8587 0499

info.australia@we-ef.com

WE-EF LUMIERE

France

Tel +33 4 74 99 14 44

Fax +33 4 74 99 14 40

info.france@we-ef.com

Product specifications given in this catalogue reflect their status as of January 2018.

Errors and omissions are excepted. Data given are subject to change without prior notice. The conditions of sale, as published in WE-EF's current price lists and/or business forms, apply. Export transactions require special agreements, particularly with regard to shipment and payment.

KTX200/KTY200/ZFY200 SERIES

Bollards

North American Edition 2020

© WE-EF 2020

WE-EF LIGHTING USA

North America

410-D Keystone Drive

Warrendale, PA 15086

United States of America

Telephone +1 724 742 0030

Fax +1 724 742 0035

info.usa@we-ef.com

www.we-ef.com