

Versatile and effective: ETV100 LED linear inground luminaires

The ETV100 series from WE-EF is a finely co-ordinated inground luminaire toolkit for linear illumination. The luminaires in this range can be installed individually, or several luminaires can be connected in a row. Different beam distributions, tunable white, colour changer and RGBW variants open up a wide range of design options for exterior applications. The luminaires can also be used as a marker light to provide orientation.

ETV100 inground luminaires are available in three lengths. The smallest version, the ETV120, is 627 mm long, the ETV130 has a length of 927 mm and the ETV140 is 1227 mm. With power ratings of 20 W, 30 W and 40 W, the luminaires are available in the standard colour temperatures of 2,700 K, 3,000 K and 4,000 K. Fitted with various PMMA LED lens systems, the luminaires open up a wide range of design options for exterior applications; the ETV100 series comprises versions for symmetric wide, medium, narrow and very narrow distribution [LB, LM, LE, LEE]. An asymmetric wallwash light characteristic [LA10] for wide, uniform illumination of wall surfaces is also available. In addition, the [A6] wallgrazer distribution is a new optic to specifically produce grazing light – for example, to accentuate wall textures or columns.

As colour changers, the ETV130-CC and ETV140-CC inground luminaires offer planners numerous options for using dynamic, coloured light as a design element for outdoor spaces. Tunable white versions of the ETV130-TW and ETV140-TW are also available for creating more subtle lighting atmospheres based on daylight. For use as an orientation light, e.g., for pathways, the series includes single RGBW versions in all sizes with diffuse distribution.

The ETV100 LED series has a protection rating IP67 for unlimited use indoors and outdoors as it is extremely well protected against water jets and dust penetration. Installation is very easy, as the luminaires are supplied prewired and do not need to be opened for installation. When fitted in the installation blockout, the luminaires are equally easy to replace. To remove the luminaires, simply unfasten the screws integrated in the two spacers until they can be gripped and easily pulled out – intelligent engineering – from WE-EF.



■ **WE-EF LEUCHTEN GmbH**
Toepinger Strasse 16
D-29646 Bispingen
Germany
Tel +49 5194 909 0
info.germany@we-ef.com
www.we-ef.com

About WE-EF

Ever since the company was founded by Wolfgang Fritzsche in 1950 the WE-EF brand has stood for high-quality exterior luminaires with an independent design and innovative technology. Today, as part of the international Fagerhult Group, WE-EF still has the typical characteristics of a family-owned business – creativity, short communication channels, flexibility and a focus on solutions. This results in a product range with highly functional luminaires in a timeless design for illuminating urban spaces and architecture.

Lighting solutions from WE-EF offer uncompromising performance and efficiency thanks to LED modules and optical systems that are developed in-house. High-quality materials, intelligent design and exclusive processes ensure a long service life and reliable operation of the luminaires. German engineering combines with the experience and the cultural horizon of a globally operating company. WE-EF is committed to responsible resource management in all areas – from the life cycle assessment of the individual products to the sustainability of all processes.

WE-EF luminaires illuminate prestigious projects around the world. Examples are the Federal Chancellery in Berlin, the Sydney Opera House in Australia, the King Abdullah Petroleum Studies and Research Center (KAPSARC) in Riyadh, The Jewel at Changi Airport in Singapore, the Metropolitan Museum of Art and Lincoln Center Plaza in New York, the Forum des Halles in Paris, the Cathedral of Our Lady in Antwerp and the new Bloomberg European Headquarters in London.

June 2020 / Reprint free of charge, please forward a copy / further information:

WE-EF LEUCHTEN GmbH
Robert Diedrich
Head of Marketing
Toepinger Straße 16
D-29646 Bispingen
Tel +49 5194 909 146
Fax +49 5194 909 299
r.diedrich@we-ef.com
www.we-ef.com

AR-PR
Andrea Rayhrer
Kommunikation & Public Relations
Alexanderstraße 126
D-70180 Stuttgart
Tel +49 711 62007838
Mobile +49 163 5001978
andrea.rayhrer@ar-pr.de
www.ar-pr.de

ETV100 LED linear inground luminaires



01 The ETV100 series from WE-EF is a finely co-ordinated inground luminaire toolkit for linear illumination.
Photo: Jackie Chan for WE-EF



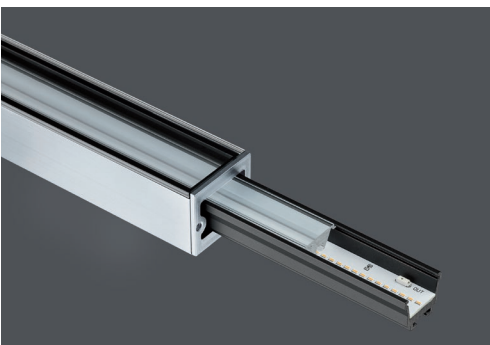
02 The luminaires in this range can be installed individually, or several luminaires can be connected in a row.
Photo: Jackie Chan for WE-EF



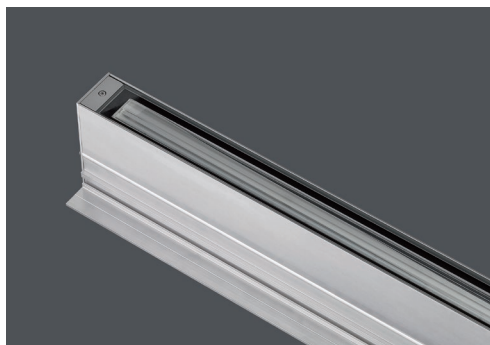
03 The series features ETV100 marker light models, especially for applications in which the ETV100 sets markings, trace contours or paths, or facilitate orientation. Photo: Frieder Blickle for WE-EF



04 The ETV100 series comprises versions for symmetric wide, medium, narrow and very narrow distribution. An asymmetric wallwash light characteristic for wide, uniform illumination of wall surfaces is also available. In addition, the wallgrazer distribution is a new optic to specifically produce grazing light – for example, to accentuate wall textures or columns. Photo: WE-EF



05 The ETV100 is designed with modularity in mind. Previously installed luminaires can be easily retrofitted with different linear lenses. Photo: WE-EF



06 ETV100 linear inground uplights have an IP67 protection rating and can therefore be freely deployed in both indoor and outdoor areas as they are optimally protected against the ingress of water and dust. Photo: WE-EF